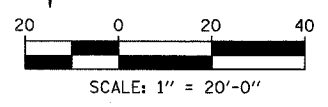
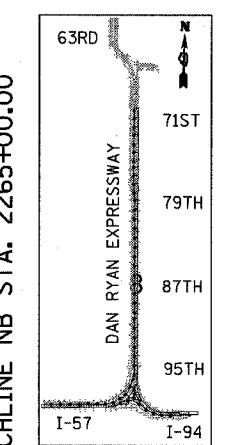
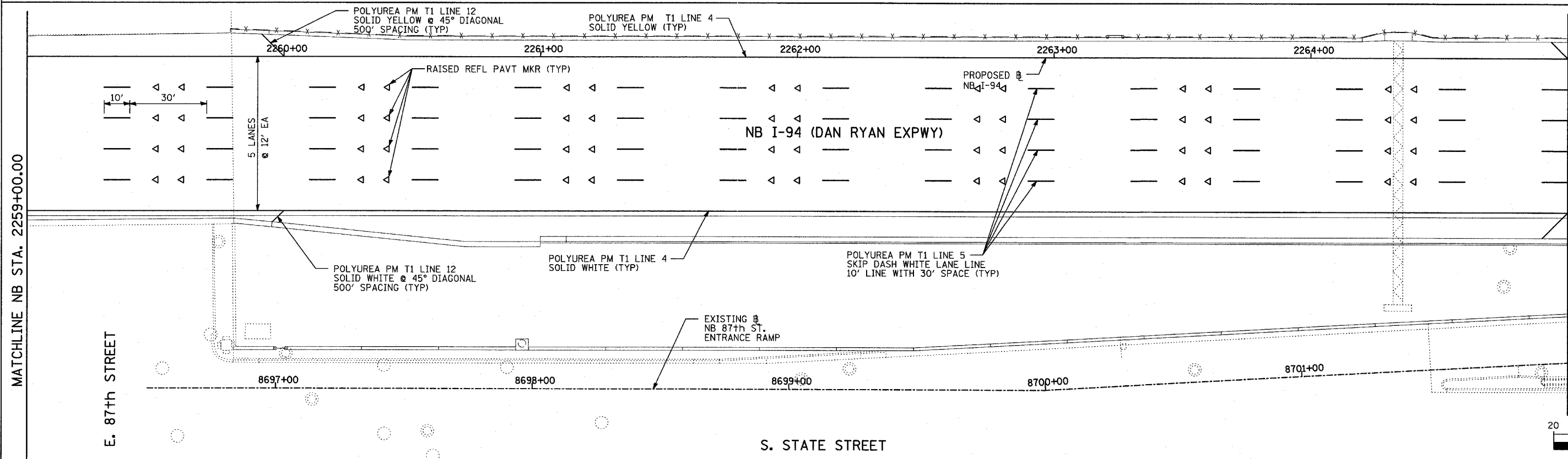
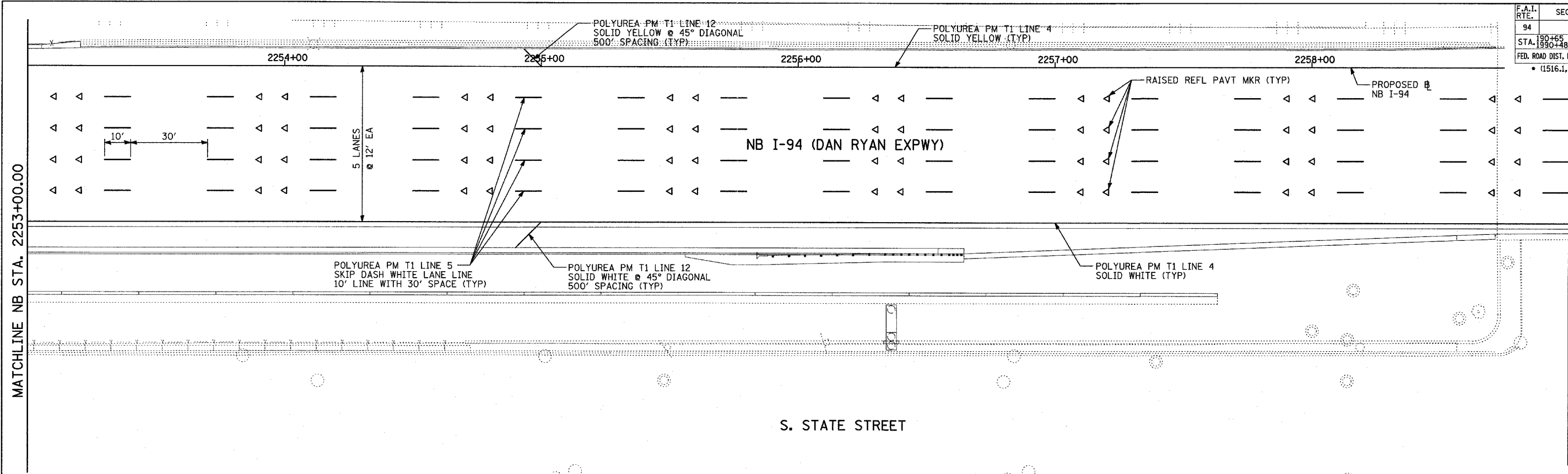


F.A.I. RTE.	SECTION	COUNTY	TOTAL SHEETS	SHEET NO.
94		COOK	916	433
STA. 190+65 (NB I-57) TO STA. 2316+00 (NB RYAN)				
FED. ROAD DIST. NO. ILLINOIS FED. AID PROJECT				
• (1516.1, 1717, & 1818) R-4 62304				



PAVEMENT MARKING NOTES:

- PAVEMENT MARKINGS SHALL BE IN ACCORDANCE WITH IDOT DISTRICT ONE STANDARD TC-12. RAISED PAVEMENT MARKERS SHALL NOT BE INSTALLED, EXCEPT AS SHOWN ON THE PLANS.
- THE RESIDENT ENGINEER SHALL CONTACT JULIA FOX (847) 705-4151, EXPRESSWAY TRAFFIC CONTROL SUPERVISOR, PRIOR TO PLACING ANY PAVEMENT MARKINGS.

REVISIONS	
NAME	DATE

ILLINOIS DEPARTMENT OF TRANSPORTATION
F.A.I. 94 (DAN RYAN EXPRESSWAY)
PAVEMENT MARKING PLAN
NB I-94 (DAN RYAN EXPRESSWAY)
STA. 2253+00.00 TO 2265+00.00
(SHEET 17 OF 29)
 SCALE: 1"=20'
 DATE: MARCH 7, 2006
 DRAWN BY: JJS
 CHECKED BY: AMB

TYLININTERNATIONAL

03/07/2006 10:22:09 AM