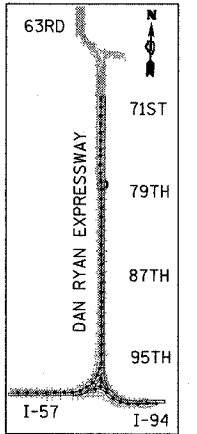
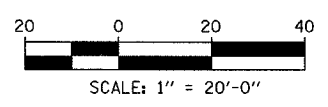


MATCHLINE NB STA. 2313+00.00

MATCHLINE NB STA. 2318+00.00



LOCATION MAP



PAVEMENT MARKING NOTES:

- PAVEMENT MARKINGS SHALL BE IN ACCORDANCE WITH IDOT DISTRICT ONE STANDARD TC-12. RAISED PAVEMENT MARKERS SHALL NOT BE INSTALLED, EXCEPT AS SHOWN ON THE PLANS.
- THE RESIDENT ENGINEER SHALL CONTACT JULIA FOX (847) 705-4151, EXPRESSWAY TRAFFIC CONTROL SUPERVISOR, PRIOR TO PLACING ANY PAVEMENT MARKINGS.

| REVISIONS | |
|-----------|------|
| NAME | DATE |
| | |
| | |
| | |
| | |
| | |
| | |
| | |
| | |
| | |
| | |

ILLINOIS DEPARTMENT OF TRANSPORTATION
 F.A.I. 94 (DAN RYAN EXPRESSWAY)
 PAVEMENT MARKING PLAN
 NB I-94 (DAN RYAN EXPRESSWAY)
 STA. 2313+00.00 TO 2318+00.00
 (SHEET 22 OF 29)
 SCALE: 1"=20'
 DATE: MARCH 7, 2006
 DRAWN BY: JJS
 CHECKED BY: AMB

TYLIN INTERNATIONAL