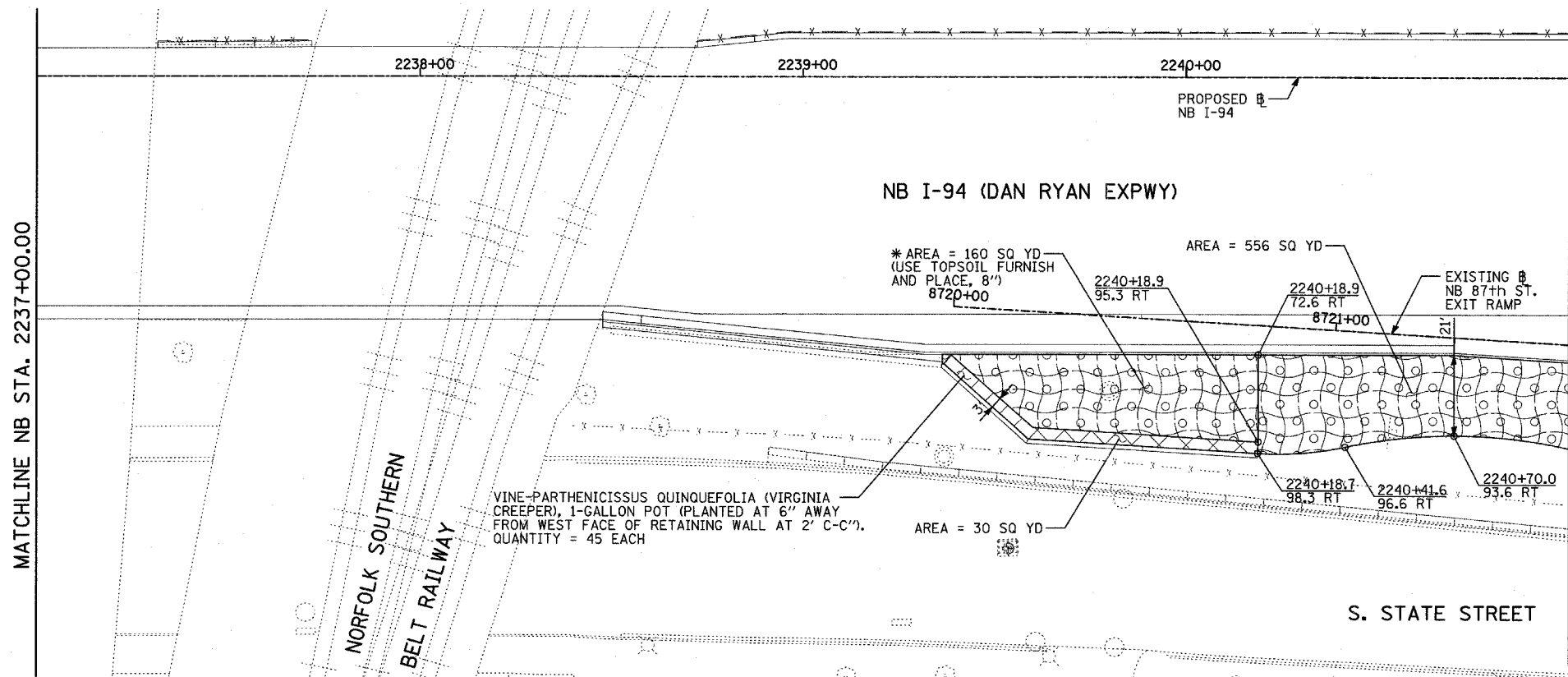
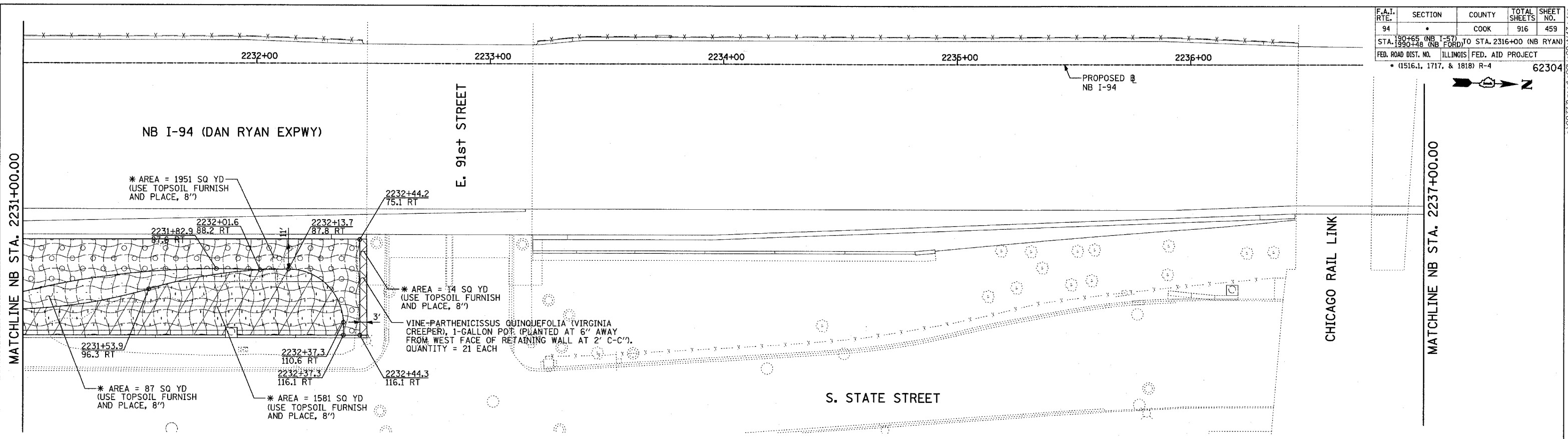
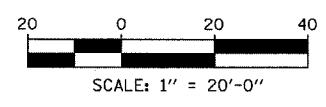
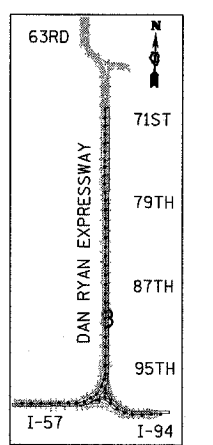


F.A.I. RTE.	SECTION	COUNTY	TOTAL SHEETS	SHEET NO.
94		COOK	916	459
STA. 190+65 (NB I-57) TO STA. 2316+00 (NB RYAN)				
FED. ROAD DIST. NO. ILLINOIS FED. AID PROJECT				
* (1516.1, 1717, & 1818) R-4 62304				



- LEGEND:**
- EROSION CONTROL BLANKET, SEEDING, CLASS 2A, NITROGEN, PHOSPHORUS, AND POTASSIUM FERTILIZER NUTRIENTS, \*TOPSOIL FURNISH AND PLACE, 4"
  - EROSION CONTROL BLANKET, SEEDING, CLASS 2A, NITROGEN, PHOSPHORUS, AND POTASSIUM FERTILIZER NUTRIENTS, \*TOPSOIL FURNISH AND PLACE, 12" COMPOST FURNISH AND PLACE, 6"
  - EROSION CONTROL BLANKET, SEEDING, CLASS 4 (MODIFIED), \*TOPSOIL FURNISH AND PLACE, 12" COMPOST FURNISH AND PLACE, 6"
  - EROSION CONTROL BLANKET, SEEDING, CLASS 5A (MODIFIED) \*TOPSOIL FURNISH AND PLACE, 12" COMPOST FURNISH AND PLACE, 6"
  - EROSION CONTROL BLANKET, SEEDING, CLASS 4A (MODIFIED) SEEDING, CLASS 5 (MODIFIED), \*TOPSOIL FURNISH AND PLACE, 12" COMPOST FURNISH AND PLACE, 6"
  - NITROGEN, PHOSPHORUS, AND POTASSIUM FERTILIZER NUTRIENTS, \*TOPSOIL FURNISH AND PLACE, 12" COMPOST FURNISH AND PLACE, 6" 4" MULCH BED PRE-EMERGENT GRANULAR HERBICIDE
  - \* TOPSOIL FURNISH AND PLACE, 8" TO BE USED IN SELECTED AREAS BETWEEN STATIONS 2223+49 AND 2240+19 (SHEETS 13-14)



**TYLIN INTERNATIONAL**

REVISIONS	
NAME	DATE

ILLINOIS DEPARTMENT OF TRANSPORTATION  
**F.A.I. 94 (DAN RYAN EXPRESSWAY)**  
**LANDSCAPING PLAN**  
**NB I-94 (DAN RYAN EXPRESSWAY)**  
**STA. 2231+00.00 TO 2241+00.00**  
**(SHEET 14 OF 28)**  
 SCALE: 1"=20'  
 DATE: MARCH 7, 2006  
 DRAWN BY: JJS  
 CHECKED BY: MPG

P:\0237\3\road\2006\0614\3.dgn 03/07/2006 09:23:40 AM