

F.A.I. RTE.	SECTION	COUNTY	TOTAL SHEETS	SHEET NO.
94	*	COOK	9/6	478
STA.		TO STA.		
FED. ROAD DIST. NO.		ILLINOIS FED. AID PROJECT		
* (1516.1, 1717, & 1818) R-4		62304		

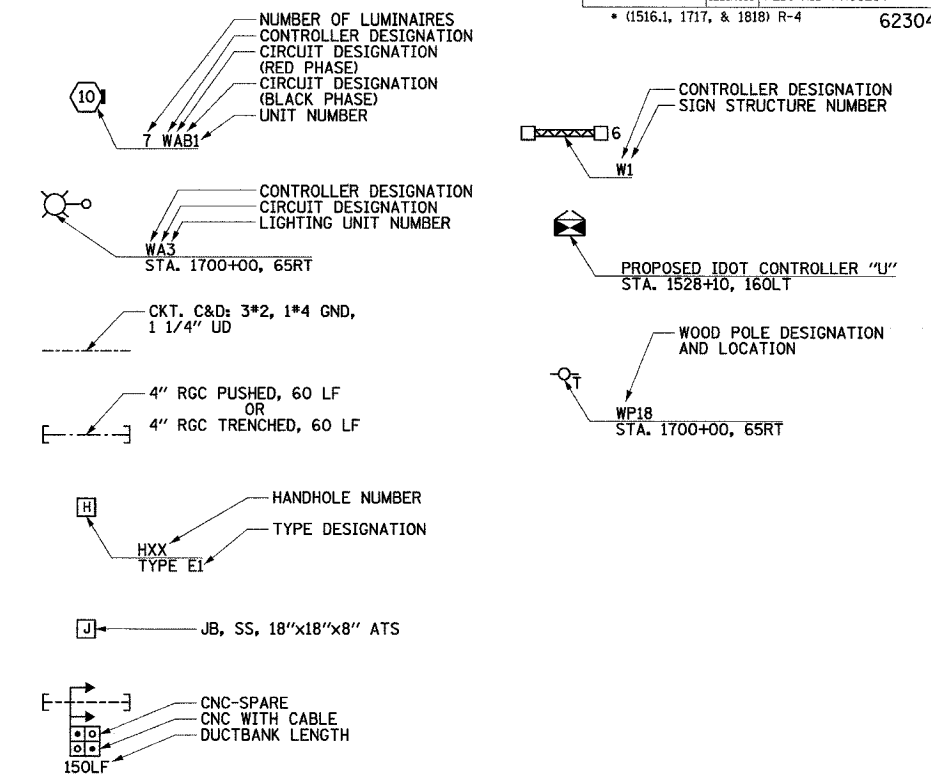
ELECTRICAL SYMBOLS FOR PROPOSED WORK

- LIGHT TOWER FOUNDATION
NUMBER INSIDE HEXAGON INDICATES TOWER TYPE
HANDHOLE LOCATION AS INDICATED
TOWER INSTALLED BY OTHERS,
UNDER A SEPARATE CONTRACT
TYPE TOWER HEIGHT
10 - 100 FEET
11 - 110 FEET
12 - 120 FEET
- LIGHT POLE FOUNDATION, SINGLE MAST ARM
(POLE AND LUMINAIRE (NIC))
- LIGHT POLE FOUNDATION, TWIN MAST ARM
(POLE AND LUMINAIRE (NIC))
- TEMPORARY LIGHTING UNIT INCLUDING 60 FOOT
WOOD POLE (CLASS 4), 8'-0" MAST ARM WITH
400 WATT HPS LUMINAIRE
- POLE FOUNDATION REMOVAL
- LIGHT POLE FOUNDATION WITH GROUND ROD
- ELECTRIC HANDHOLE; TYPE AS INDICATED
TYPE E1: PC CONCRETE, 21.5"x21.5"x30"
IDOT STANDARD 814001 (NIC)
TYPE E2: PC CONCRETE-HEAVY DUTY, 22"x22"x30",
IDOT STANDARD 814001 (NIC)
TYPE C1: COMMUNICATIONS VAULT (NIC)
TYPE S1: PC CONCRETE-HEAVY DUTY, 22"x22"x36"
TYPE S1 (SPECIAL): PC CONCRETE-HEAVY DUTY, 22"x22"x36" (NIC)
TYPE S2: PC CONCRETE-HEAVY DUTY SPECIAL,
30"x30"x36" (NIC)
- JUNCTION BOX; TYPE AND SIZE AS INDICATED
ON PLANS
- FIBER OPTIC COMMUNICATIONS HUT
- LIGHTED SIGN STRUCTURE-CANTILEVER TYPE
(NUMBER OF FLUORESCENT FIXTURES AS
INDICATED WITH ASSOCIATED DISCONNECT
SWITCH - TYP.) (N.I.C.)
- LIGHTED SIGN STRUCTURE-TRUSS TYPE (N.I.C.)
- TEMPORARY LIGHTED SIGN STRUCTURE-TRUSS
TYPE, QUANTITY OF LUMINAIRES AS SHOWN
ON SIGNING PLANS
- LIGHTED SIGN STRUCTURE-BRIDGE MOUNT TYPE (N.I.C.)
- DYNAMIC MESSAGE SIGN (N.I.C.)
- FLASHING BEACON SIGN (N.I.C.)
- CLOSED CIRCUIT TELEVISION CAMERA (N.I.C.)
- MICROWAVE DETECTOR (N.I.C.)
- DETECTOR LOOP
- CONTROLLER CABINET FOUNDATION
- CONTROLLER CABINET FOUNDATION; SURVEILLANCE
- CONTROLLER CABINET FOUNDATION; SURVEILLANCE,
TYPE 334
- RAMP METER SIGNAL POLE/HEAD FOUNDATION
- RAMP METER FLASHER FOUNDATION
- TEMPORARY WOOD POLE, 50 FOOT LENGTH
(10 FOOT BURIED, 40 FOOT INSTALLED HEIGHT)
- HIGHWAY ADVISORY RADIO ANTENNA (N.I.C.)
- ELECTRIC UTILITY POLE
- CCTV CAMERA POLE (N.I.C.)

ELECTRICAL SYMBOLS FOR EXISTING CONDITIONS

- EXISTING LIGHTING UNIT, TWIN LUMINAIRE
- EXISTING LIGHTING UNIT
- EXISTING TEMPORARY LIGHTING UNIT
- EXISTING CDOT LIGHTING UNIT
- EXISTING UNDERPASS LUMINAIRE
- EXISTING ELECTRIC HANDHOLE
- EXISTING JUNCTION BOX
- EXISTING PULL BOX
- EXISTING TELEPHONE CONNECTION
- EXISTING FIBER OPTIC COMMUNICATIONS HUT
- EXISTING ELECTRIC HANDHOLE/MANHOLE
- EXISTING CDOT ELECTRIC HANDHOLE/MANHOLE
- EXISTING LIGHTED SIGN STRUCTURE-
CANTILEVER TYPE
- EXISTING LIGHTED SIGN STRUCTURE-TRUSS TYPE
- EXISTING LIGHTED SIGN STRUCTURE-
BRIDGE MOUNT TYPE
- EXISTING DYNAMIC MESSAGE SIGN
- EXISTING FLASHING BEACON SIGN
- EXISTING CLOSED CIRCUIT TELEVISION CAMERA
- EXISTING MICROWAVE DETECTOR
- EXISTING DETECTOR LOOP
- EXISTING LIGHTING CONTROLLER, DUPLEX
- EXISTING CONTROLLER CABINET
- EXISTING RAMP METER SIGNAL POLE/HEAD
- EXISTING RAMP METER FLASHER
- EXISTING HIGHWAY ADVISORY RADIO ANTENNA
- EXISTING CCTV CAMERA POLE
- EXISTING UTILITY SERVICE CONNECTION,
POLE MOUNTED
- EXISTING UTILITY SERVICE CONNECTION,
PAD MOUNTED
- EXISTING CONCEALED CONDUIT IN STRUCTURE
- EXISTING EXPOSED CONDUIT
- EXISTING RACEWAY OR DIRECT BURIED CABLE
WITHOUT ENCASUREMENT
- EXISTING CONCEALED CONDUIT UNDERGROUND,
TRENCHED OR PUSHED
- EXISTING ELECTRIC CABLE IN CONDUIT

GENERAL ELECTRICAL CALLOUTS



J:\V5\contract 20 details\20_e090900201.dwg

REVISIONS	
NAME	DATE

ILLINOIS DEPARTMENT OF TRANSPORTATION
F.A.I. 94 (DAN RYAN EXPRESSWAY)

ELECTRICAL SYMBOLS

SCALE: NOT TO SCALE DRAWN BY: CJM
DATE: MARCH 7, 2006 CHECKED BY: BMW



3/7/2006 3:44:36 PM