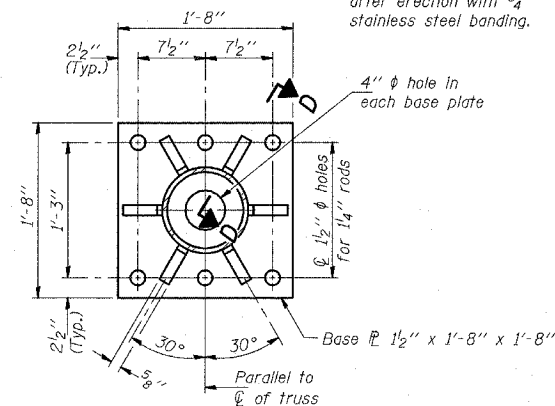
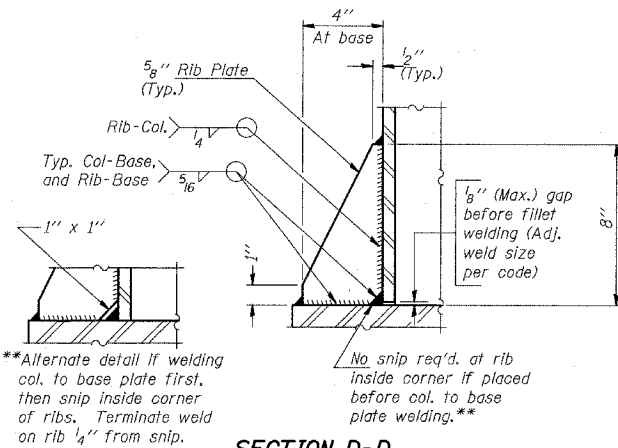


**DETAIL B**

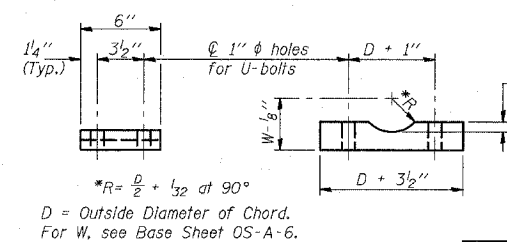


**SECTION B-B**



**SECTION D-D**

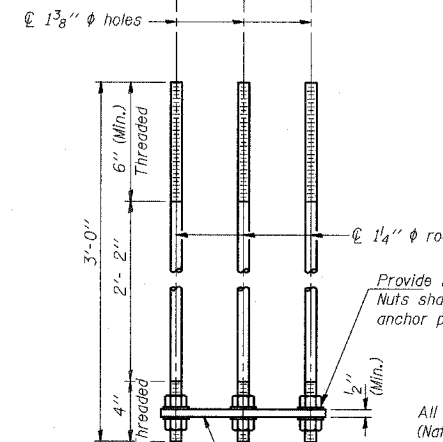
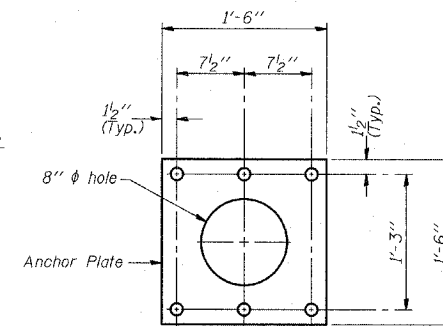
\*\*Alternate detail if welding col. to base plate first, then snip inside corner of ribs. Terminate weld on rib 1/4" from snip.



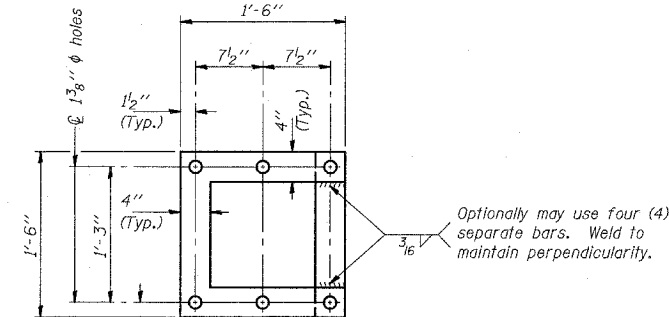
**SADDLE SHIM DETAIL**

ASTM B26 Alloy 356-F or ASTM B209 Alloy 6061-T651 (4 required per sign truss)

Truss Chord Nominal Dia.	a
5"	3/4"
5 1/2"	13/16"
6"	7/8"
6 1/2"	15/16"
7"	1"



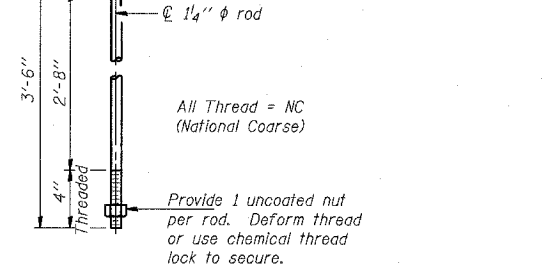
**ANCHOR ROD DETAIL**  
Spread Footing Foundation



**POSITIONING PLATE(S)**

At each location, provide 1/4" thick positioning plate(s) and six (6) additional nuts to be used with leveling nuts to maintain anchor bolts position during concrete placement.

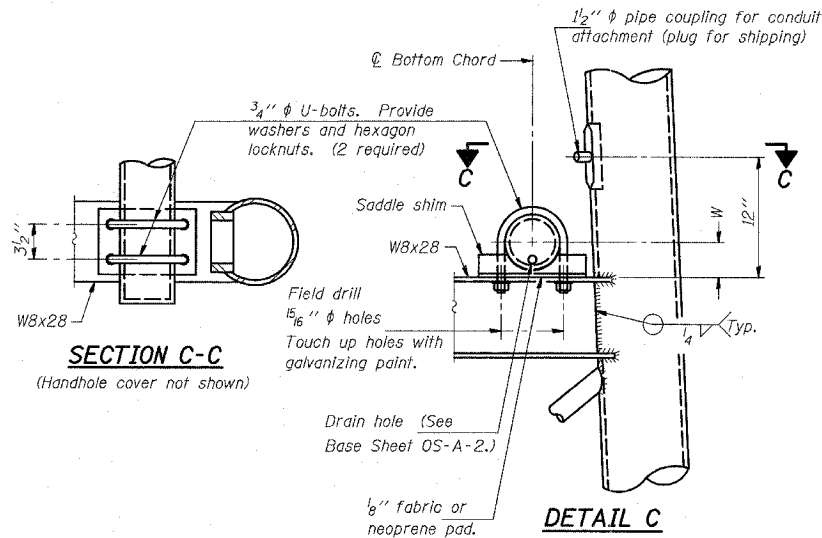
1/4" plate and extra nuts become Contractor's property. Cost included in "Drilled Shaft Concrete Foundations".



**ANCHOR ROD DETAIL**  
Drilled Shaft Foundation

Anchor rods shall conform to AASHTO M314 Grade 36 or 50 and meet Charpy V-Notch (CVN) energy of 15 lb.-ft. at 40° F. Galvanize upper 12" per AASHTO M232. No welding shall be permitted on rods.

**10" PIPE SUPPORT FRAME DETAILS**



**SECTION C-C**  
(Handhole cover not shown)

**DETAIL C**

NUMBER	REVISION	DATE

DESIGNED		20
CHECKED		
DRAWN		
CHECKED		

OS-A-6A 11/1/2002

REVISIONS	
NAME	DATE

ILLINOIS DEPARTMENT OF TRANSPORTATION  
F.A.I. 94 (DAN RYAN EXPRESSWAY)

OVERHEAD SIGN STRUCTURES  
SUPPORT FRAME DETAILS  
ALUMINUM TRUSS

SCALE: AS NOTED DRAWN BY: AMB  
DATE: MARCH 7, 2006 CHECKED BY: TB