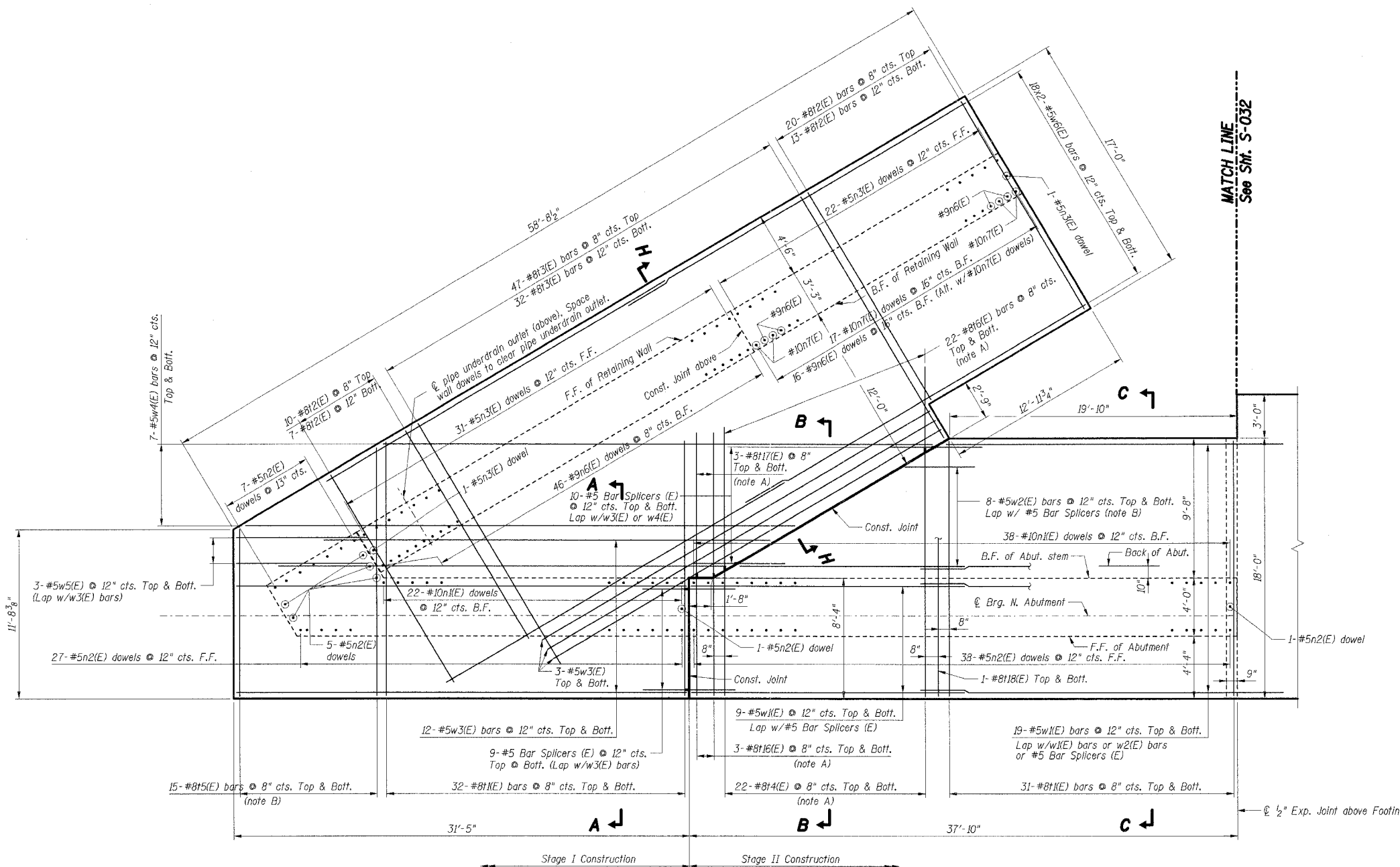


F.A.I. RTE.	SECTION	COUNTY	TOTAL SHEETS	SHEET NO.
57		COOK	916	608
STA.	TO STA.			
FED. ROAD DIST. NO.	ILLINOIS	FED. AID PROJECT		
CONTRACT NO. 62304				
*(1516.1, 1717, & 1818) R-4				



Re-bar Notes:

- A. For variable length Bar Splicers, see Sht. S-043. Use half of cut bars in bottom of footing and remainder in top of footing.
- B. Cut bars according to Cutting Diagram, Sht. S-039. Use half of bars in Butt. of Footing & remainder in Top of Footing.

Notes:

- 1. For Footing layout, see Sht. S-005.
- 2. Reinforcement bars designated (E) shall be epoxy coated.
- 3. Bars indicated thus 4 x 2-#5 etc. indicates 4 lines of bars with 2 lengths per line.
- 4. B.F. denotes Back Face, F.F. denotes Front Face.
- 5. For Section A-A, see Sht. S-033, for Sections B-B and C-C, see Sht. S-038.
- 6. For Bar List & Bill of Material, see Sht. S-039.
- 7. Work this sheet with Shts. S-030, S-032 & S-043.
- 8. For typical wall details, see Sht. S-040.
- 9. Maximum applied bearing pressure: 4.7 ksf @ Elev. -12.00.
- 10. For buried utilities, coordinate with Drainage and Utility plans in this Contract and in IDOT Contract No. 62593.

FOUNDATION PLAN I - NORTH ABUTMENT

SHT. S-031

REVISIONS	
NAME	DATE

ILLINOIS DEPARTMENT OF TRANSPORTATION
 F.A.I. ROUTE 57 (INTERSTATE 57)
 I-57 NB OVER WB CONNECTOR
 SN 016-0072 OLD, SN 016-2852 NEW
 STA. 238+73.54
 COOK COUNTY, SECTION (1516.1, 1717, & 1818) R-4
 NORTH ABUTMENT
 FOUNDATION PLAN I

DATE: 03/07/06
 DRAWN BY: FD
 CHECKED BY: TCU

TENG
 TENG & ASSOCIATES, INC.
 ENGINEERS/ARCHITECTS/PLANNERS
 202 N. MICHIGAN AVE., CHICAGO, IL 60601
 TELEPHONE: 312.642.0000

..\EXC00WOP.DGN, ..\XXX00VTT.DGN, ..\SBL0018T.DGN, ..\ABT00NEC.DGN, ..\GEB00RER.DGN, ..\FMD0019E.DGN, ..\VPEC00WD.DGN, ..\VABT0019E.DGN, ..\VTL00VVT.DGN
 3-01-2006, 15:58:48
 ..\NF5-C001-PROJ.CVL\DOCUMENT\VT0208601\STRUCT\I.DGN\IND00194.DGN
 UDET