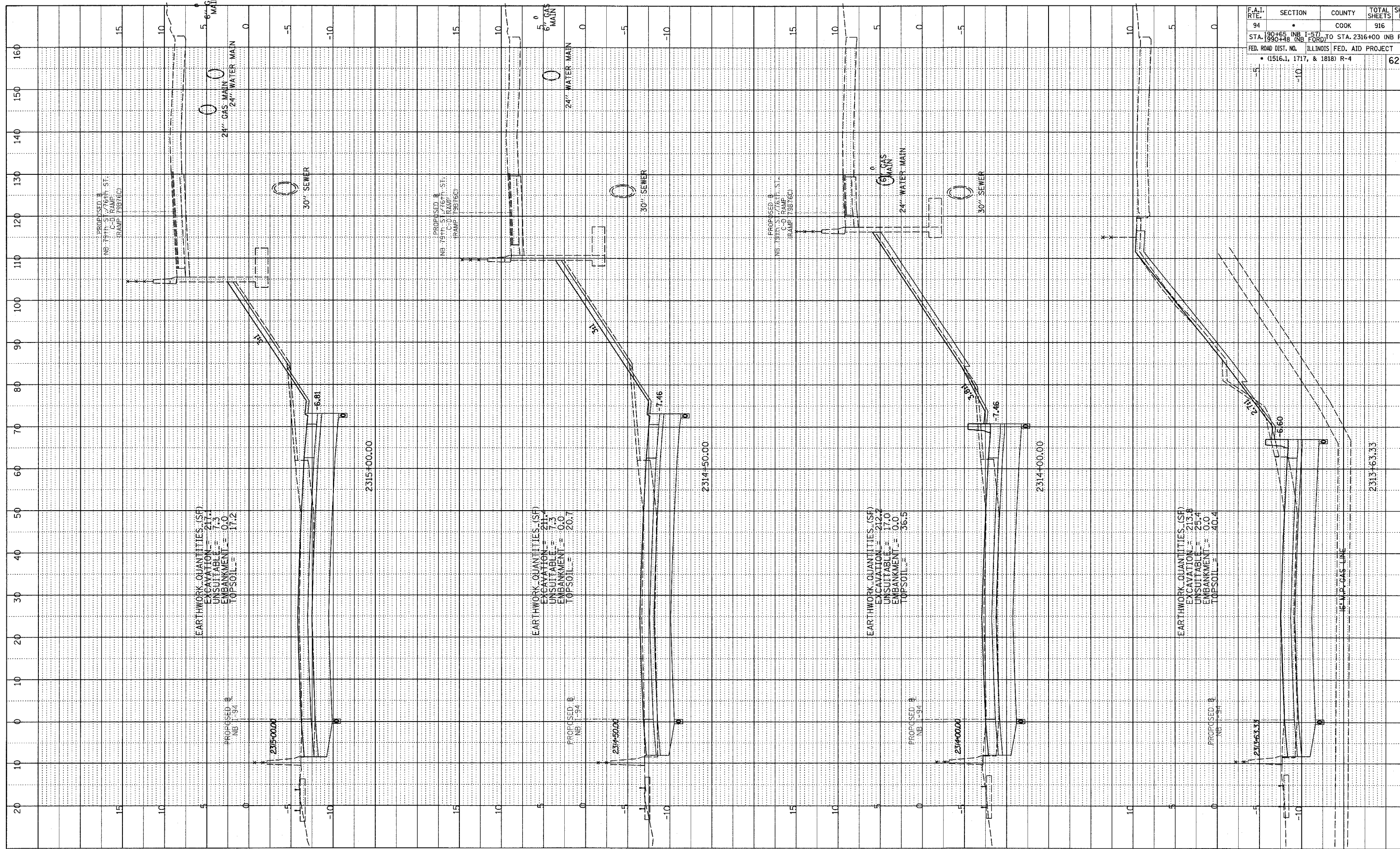
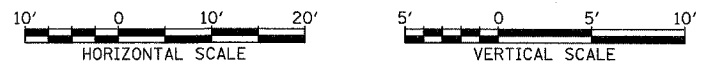


DATE	BY
PROFILE SURVEYED	
GRADES CHECKED	
NOTE BOOK	
NO.	



F.A.I. RTE.	SECTION	COUNTY	TOTAL SHEETS	SHEET NO.
94		COOK	916	776
STA. 1990+48 (NB I-94) TO STA. 2316+00 (NB I-94)				
FED. ROAD DIST. NO. ILLINOIS FED. AID PROJECT				
(1516.1, 1717, & 1818) R-4				

TYLIN INTERNATIONAL



NORTHBOUND I-94 (DAN RYAN EXPWY)
STA. 2313+63.33 TO STA. 2315+00

03/03/2006 04:49:03 PM