

Wang Engineering, INC.
 Consulting Geotechnical and Environmental Engineers
 wangeng3@wangeng.com
 1145 Main Street
 Lombard, IL 60148
 Telephone: 630 953-9928
 Fax: 630 953-9938

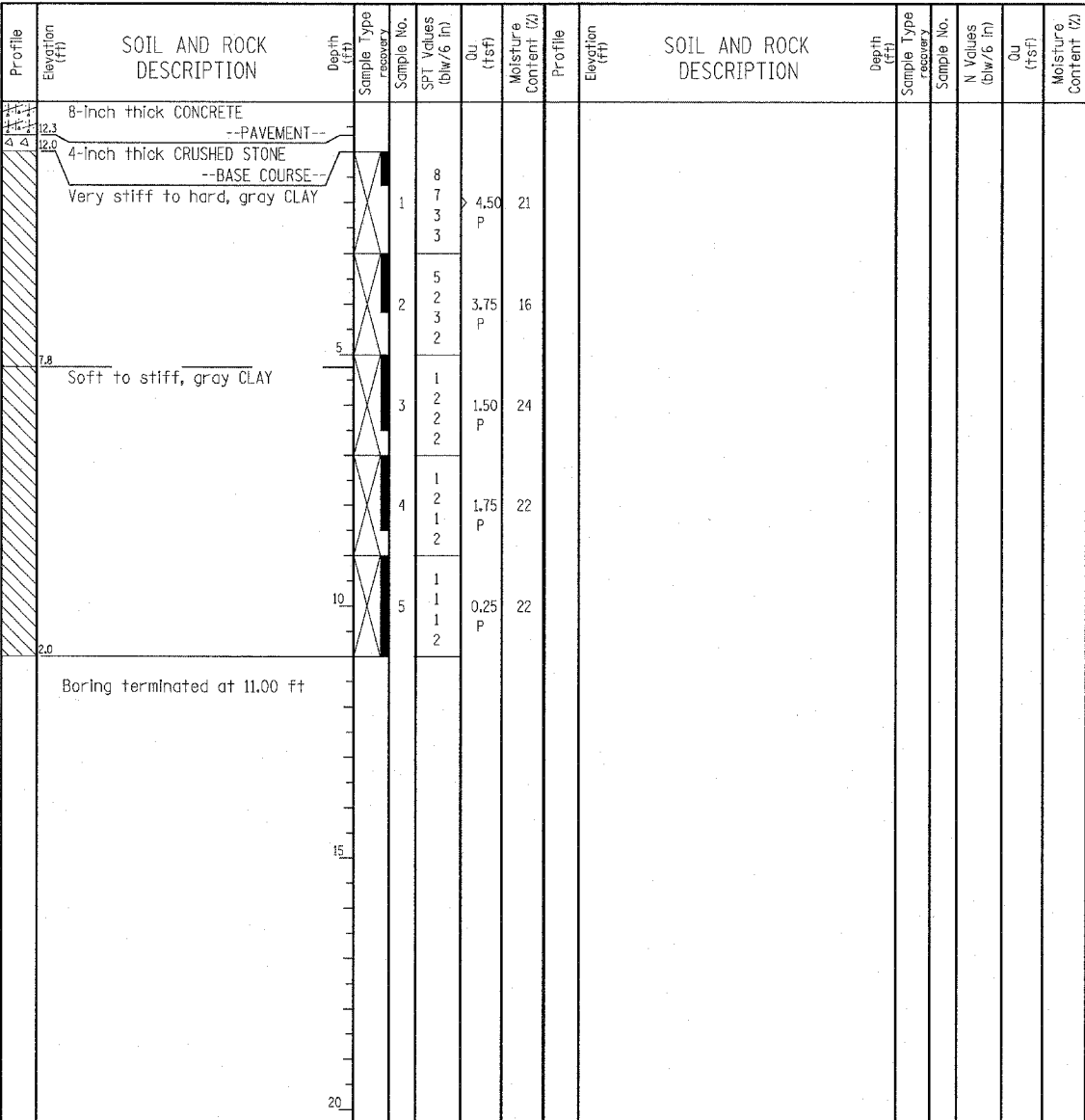
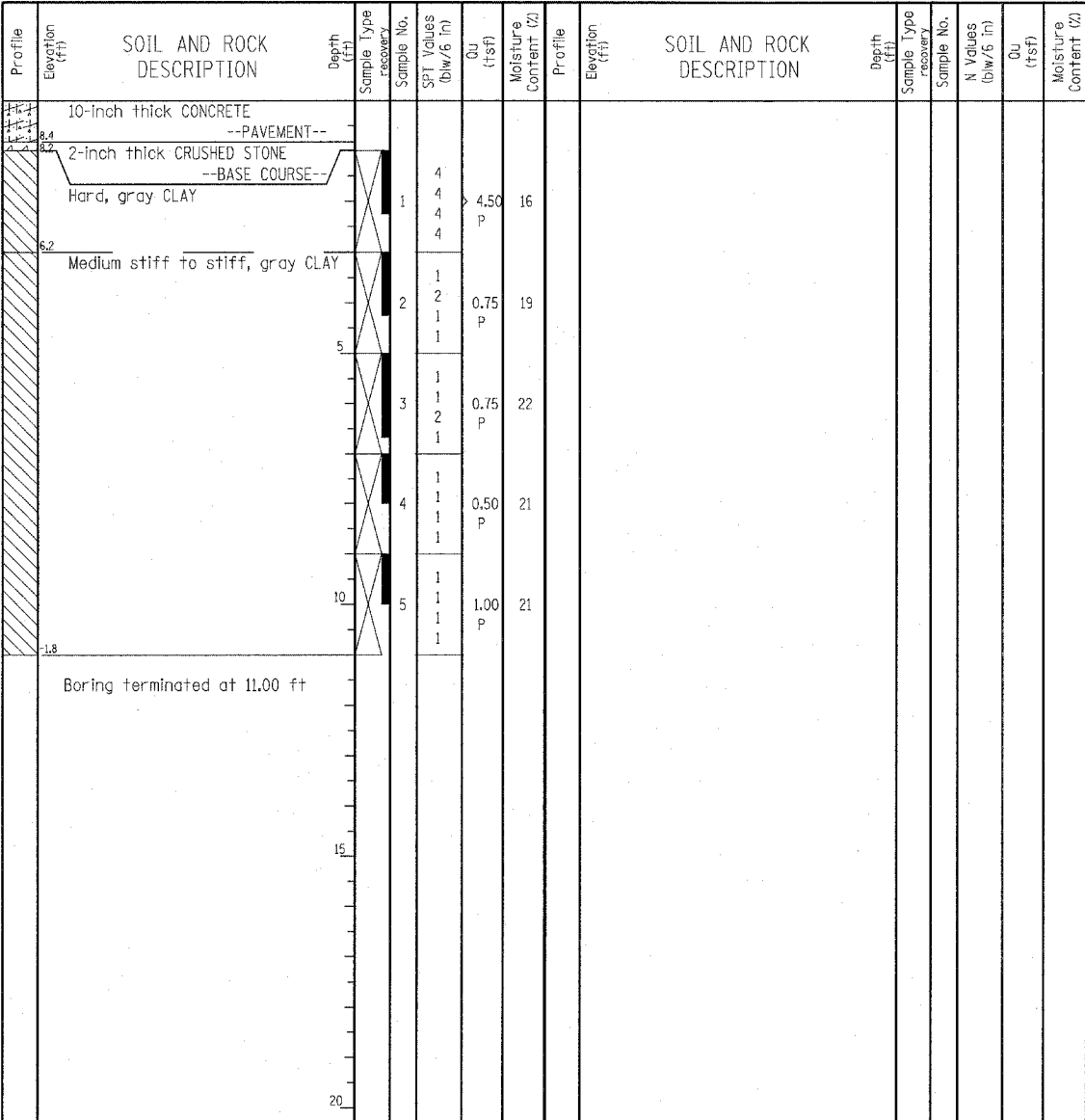
BORING LOG P-001
 WEI Job No.: 414-07-01
 Client: T. Y. LIN International, Inc.
 Project: Dan Ryan Contracts 62304 (20) and 62593 (23)
 Location: City of Chicago, Cook County, Illinois

Datum: CCD
 Elevation: 9.20 ft
 North: 1840471.54 ft
 East: 1177966.20 ft
 Station: 2036+71.28
 Offset: 34.78' RT

Wang Engineering, INC.
 Consulting Geotechnical and Environmental Engineers
 wangeng3@wangeng.com
 1145 Main Street
 Lombard, IL 60148
 Telephone: 630 953-9928
 Fax: 630 953-9938

BORING LOG P-002
 WEI Job No.: 414-07-01
 Client: T. Y. LIN International, Inc.
 Project: Dan Ryan Contracts 62304 (20) and 62593 (23)
 Location: City of Chicago, Cook County, Illinois

Datum: CCD
 Elevation: 13.01 ft
 North: 1840767.19 ft
 East: 1177915.45 ft
 Station: 2039+75.90
 Offset: 22.44' RT



| GENERAL NOTES | | | | WATER LEVEL DATA | |
|---|------------------|-------------------|--|---------------------------|-------|
| Begin Drilling | 06-30-2003 | Complete Drilling | 06-30-2003 | While Drilling | ∇ DRY |
| Drilling Contractor | Patrick Drilling | Drill Rig | CME 75 TMR | At Completion of Drilling | ∇ DRY |
| Driller | K&J | Logger | Y. Shiu | Time After Drilling | NA |
| Checked by | MLS | Drilling Method | 3.25" ID HSA; Boring backfilled with bentonite upon completion | Depth to Water | ∇ NA |
| The stratification lines represent the approximate boundary between soil types; the actual transition may be gradual. | | | | | |

| GENERAL NOTES | | | | WATER LEVEL DATA | |
|---|------------------|-------------------|--|---------------------------|-------|
| Begin Drilling | 06-30-2003 | Complete Drilling | 06-30-2003 | While Drilling | ∇ DRY |
| Drilling Contractor | Patrick Drilling | Drill Rig | CME 75 TMR | At Completion of Drilling | ∇ DRY |
| Driller | K&J | Logger | Y. Shiu | Time After Drilling | NA |
| Checked by | MLS | Drilling Method | 3.25" ID HSA; Boring backfilled with bentonite upon completion | Depth to Water | ∇ NA |
| The stratification lines represent the approximate boundary between soil types; the actual transition may be gradual. | | | | | |

LEGEND

| | |
|----|---------------------|
| NP | NON-PLASTIC |
| B | BULGE FAILURE |
| S | SHEAR FAILURE |
| P | POCKET PENETROMETER |

TYLIN INTERNATIONAL

| REVISIONS | |
|-----------|------|
| NAME | DATE |
| | |
| | |
| | |
| | |
| | |
| | |
| | |
| | |
| | |

ILLINOIS DEPARTMENT OF TRANSPORTATION
 F.A.I. 94 (DAN RYAN EXPRESSWAY)
 SOIL BORINGS P-001 & P-002

SCALE: N.T.S. DRAWN BY: RTM
 DATE: MARCH 7, 2006 CHECKED BY: MPG