

Wang Engineering, INC.
 Consulting Geotechnical and Environmental Engineers
 wangeng3@wangeng.com
 1145 Main Street
 Lombard, IL 60148
 Telephone: 630 953-9928
 Fax: 630 953-9938

BORING LOG P-005 Page 1 of 1

WEI Job No.: 414-07-01

Datum: CCD
 Elevation: 1.04 ft
 North: 1841664.75 ft
 East: 1177886.69 ft
 Station: 2202+95.85
 Offset: 55.76' RT

Client: T. Y. LIN International, Inc.
 Project: Dan Ryan Contracts 62304 (20) and 62593 (23)
 Location: City of Chicago, Cook County, Illinois

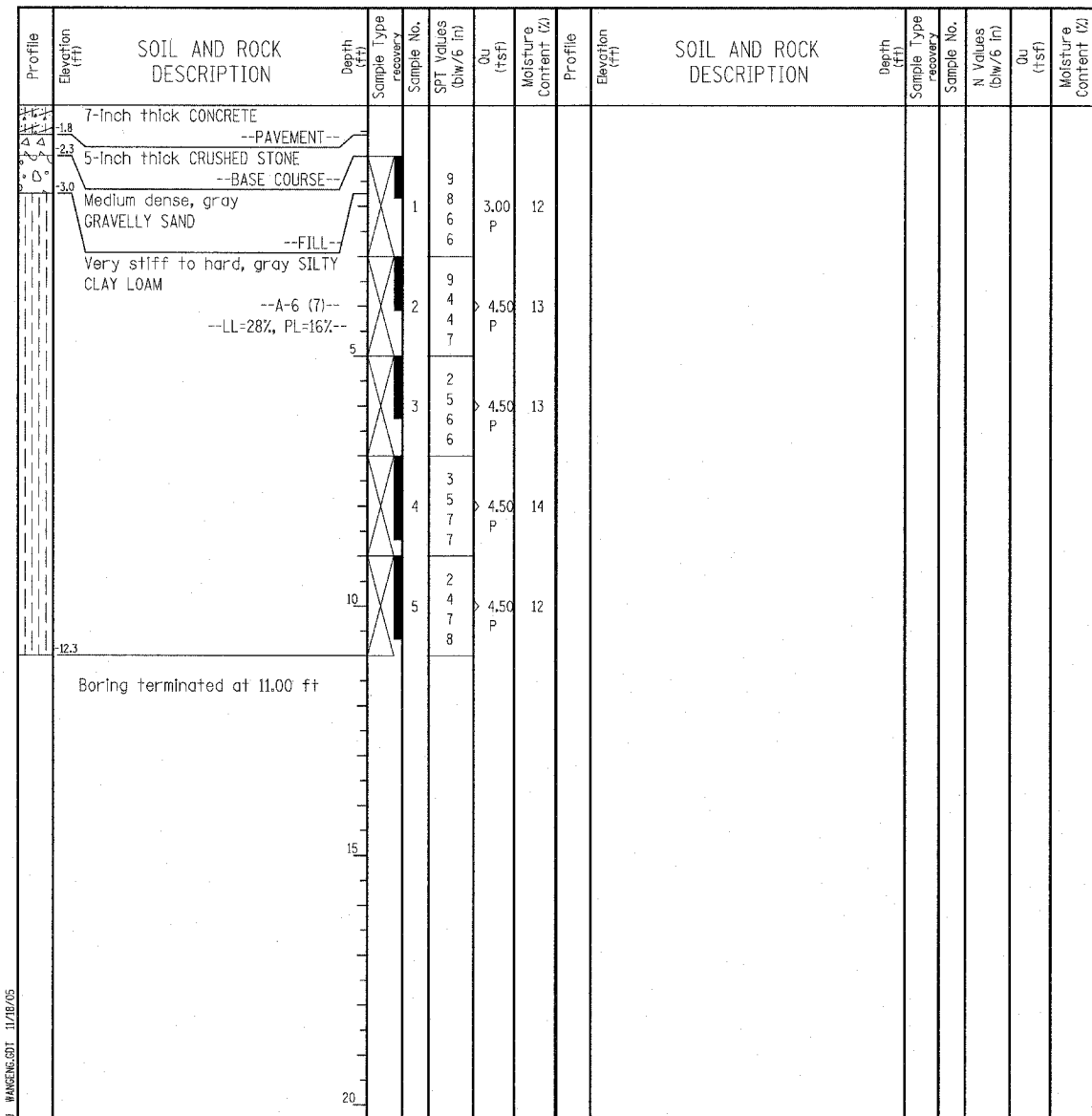
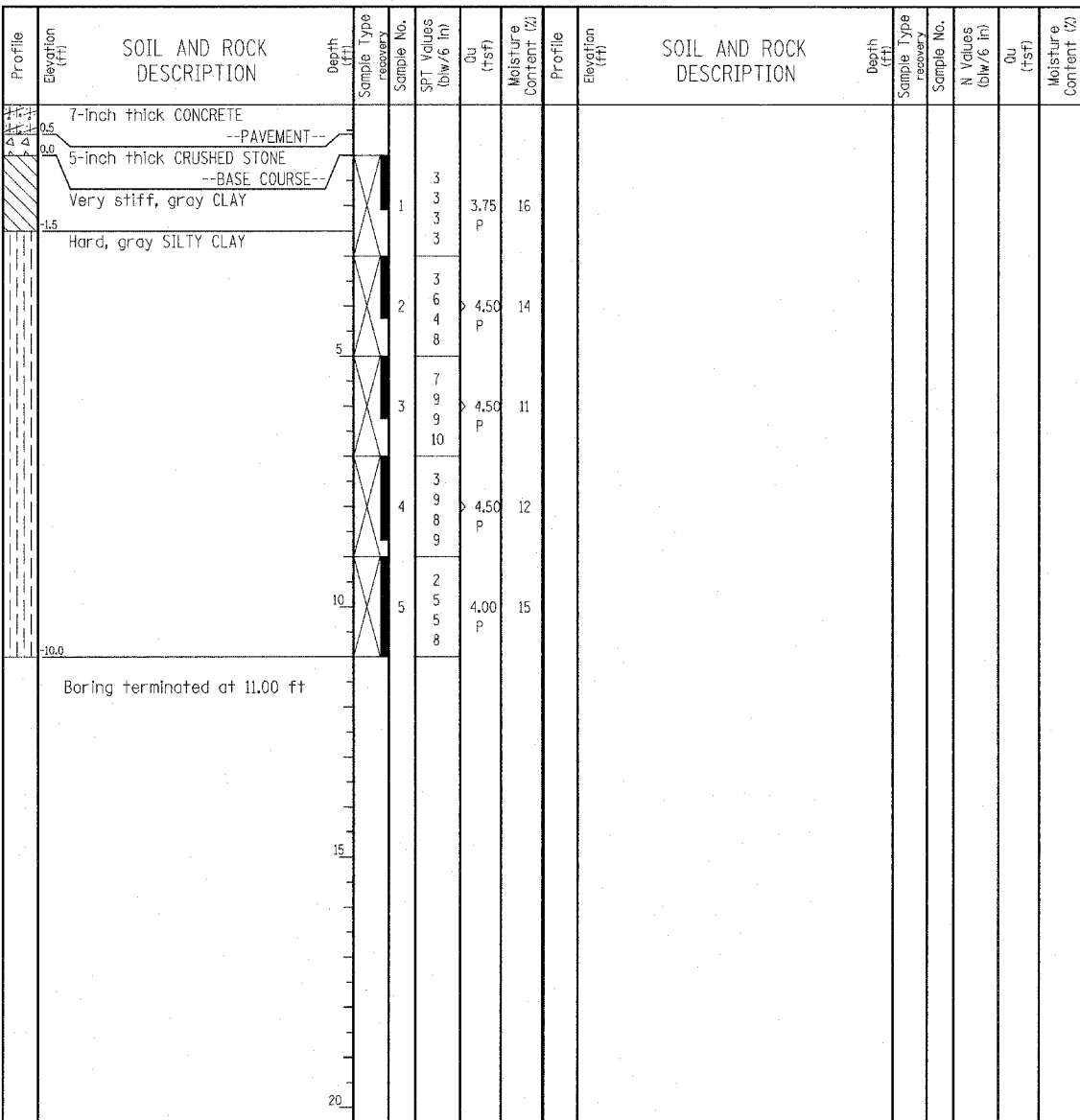
Wang Engineering, INC.
 Consulting Geotechnical and Environmental Engineers
 wangeng3@wangeng.com
 1145 Main Street
 Lombard, IL 60148
 Telephone: 630 953-9928
 Fax: 630 953-9938

BORING LOG P-008 Page 1 of 1

WEI Job No.: 414-07-01

Datum: CCD
 Elevation: -1.26 ft
 North: 1842482.52 ft
 East: 1177863.95 ft
 Station: 2211+13.93
 Offset: 56.44' RT

Client: T. Y. LIN International, Inc.
 Project: Dan Ryan Contracts 62304 (20) and 62593 (23)
 Location: City of Chicago, Cook County, Illinois



GENERAL NOTES				WATER LEVEL DATA		
Begin Drilling	06-30-2003	Complete Drilling	06-30-2003	While Drilling	∇ DRY	
Drilling Contractor	Patrick Drilling	Drill Rig	CME 75 TMR	At Completion of Drilling	∇ DRY	
Driller	K&J	Logger	Y. Shiu	Time After Drilling	NA	
Drilling Method	3.25" ID HSA; Boring backfilled with bentonite upon completion				Depth to Water	∇ NA
The stratification lines represent the approximate boundary between soil types; the actual transition may be gradual.						

GENERAL NOTES				WATER LEVEL DATA		
Begin Drilling	06-30-2003	Complete Drilling	06-30-2003	While Drilling	∇ DRY	
Drilling Contractor	Patrick Drilling	Drill Rig	CME 75 TMR	At Completion of Drilling	∇ DRY	
Driller	K&J	Logger	Y. Shiu	Time After Drilling	NA	
Drilling Method	3.25" ID HSA; Boring backfilled with bentonite upon completion				Depth to Water	∇ NA
The stratification lines represent the approximate boundary between soil types; the actual transition may be gradual.						

LEGEND

NP	NON-PLASTIC
B	BULGE FAILURE
S	SHEAR FAILURE
P	POCKET PENETROMETER

TYLIN INTERNATIONAL

REVISIONS	
NAME	DATE

ILLINOIS DEPARTMENT OF TRANSPORTATION
 F.A.I. 94 (DAN RYAN EXPRESSWAY)
 SOIL BORINGS P-005 & P-008

SCALE: N.T.S. DRAWN BY: RTM
 DATE: MARCH 7, 2006 CHECKED BY: MPG