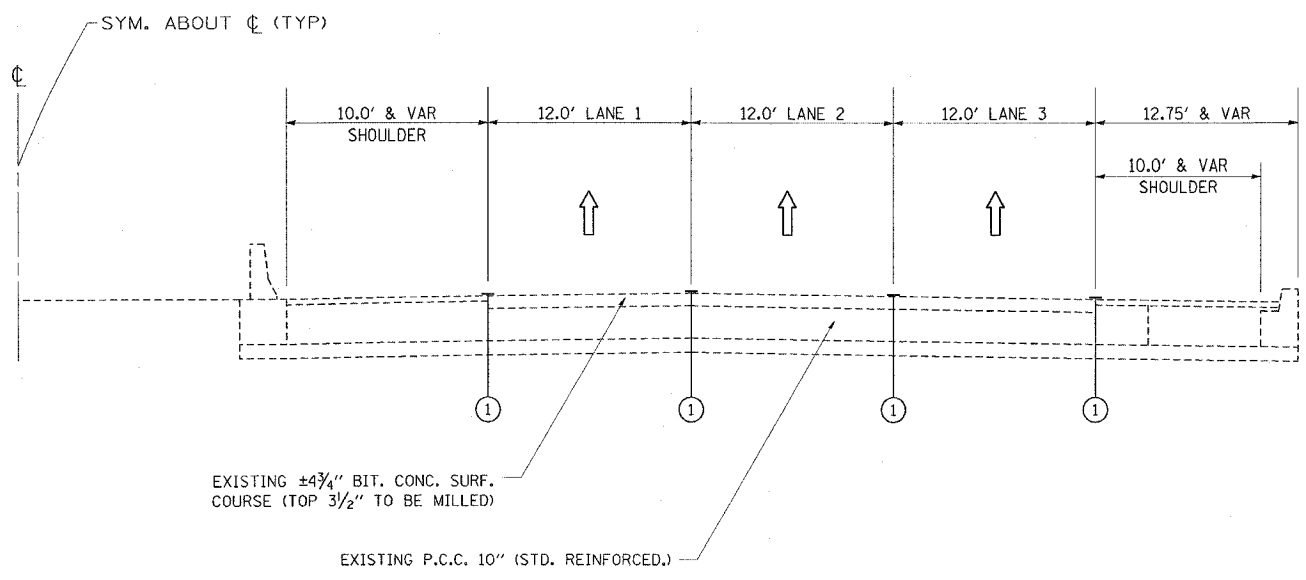
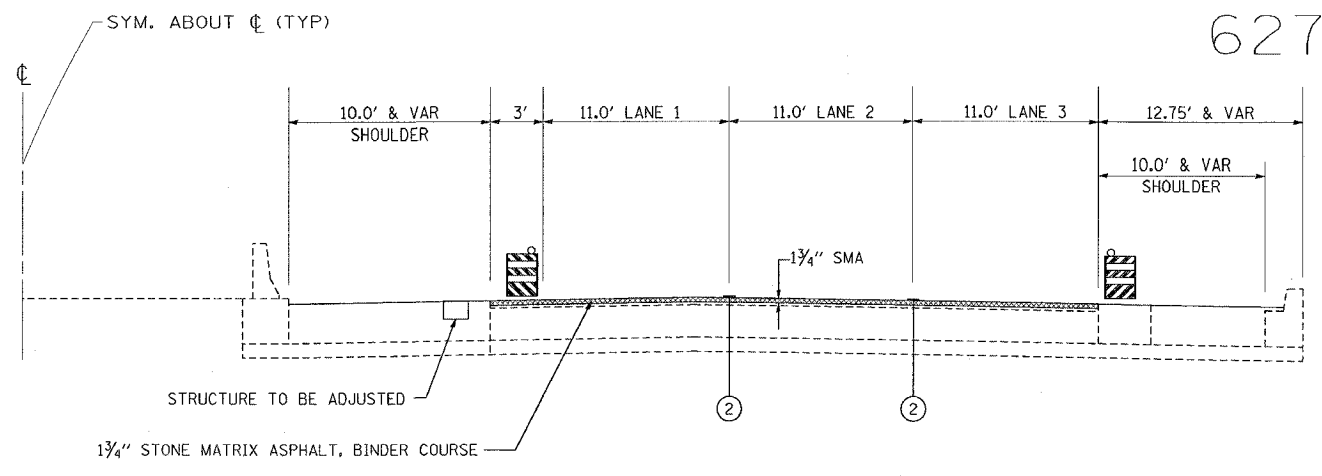


|                                   |          |                  |              |           |
|-----------------------------------|----------|------------------|--------------|-----------|
| CONTRACT NO.                      |          |                  |              |           |
| F.A.I. RTE.                       | SECTION  | COUNTY           | TOTAL SHEETS | SHEET NO. |
| 90                                |          | COOK             | 81           | 12        |
| STA.                              | TO STA.  |                  |              |           |
| FED. ROAD DIST. NO.               | ILLINOIS | FED. AID PROJECT |              |           |
| • (1012, 1214, 1415, & 1517) RS-3 |          |                  |              |           |

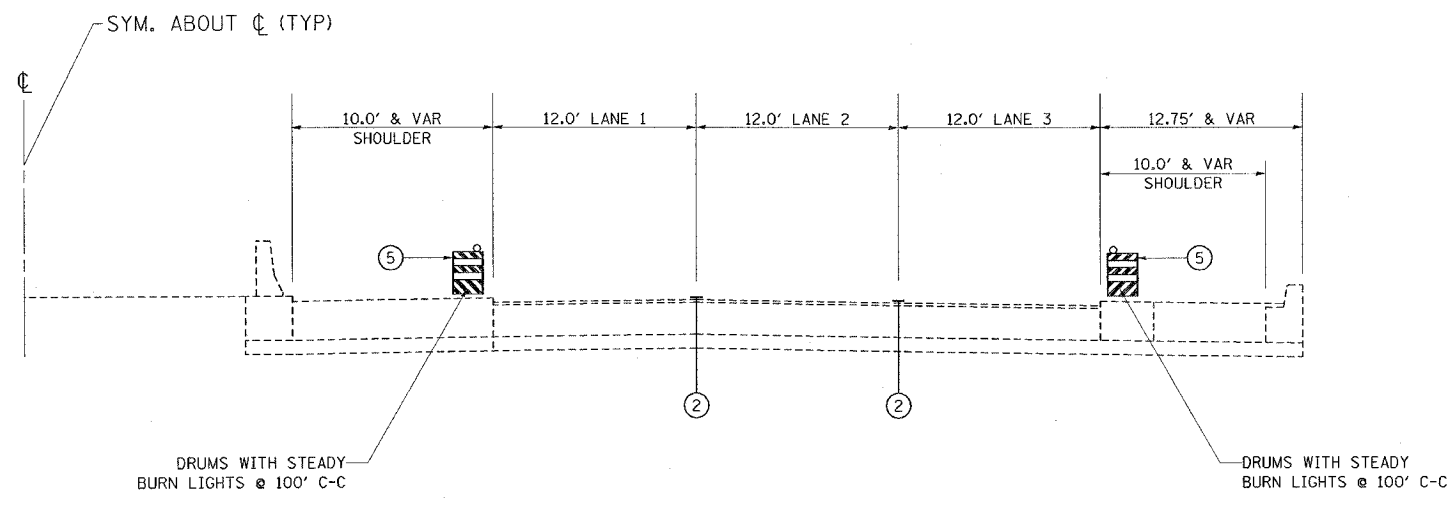
62746



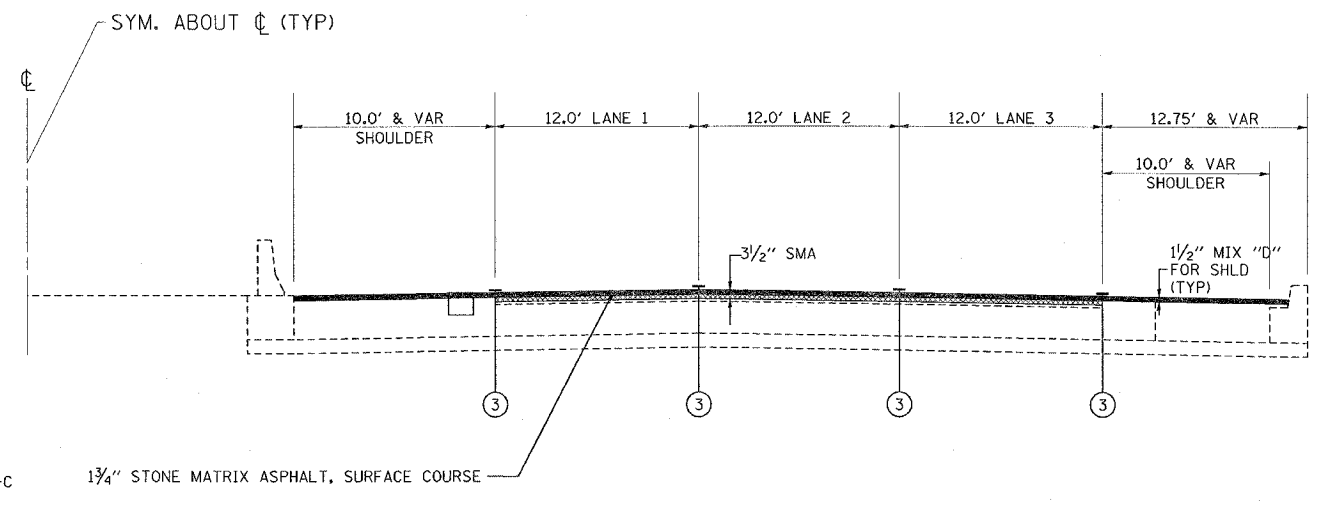
1. EXISTING CONDITIONS



3. CONDITIONS AFTER BINDER COURSE



2. CONDITIONS AFTER MILLING



4. FINAL CONDITIONS

LEGEND

- ① EXISTING PAVEMENT MARKING
- ② EPOXY PAVEMENT MARKING, LINE 5" (10' DASH - 30' SKIP)
- ③ PERMANENT PAVEMENT MARKING
- ④ DRUMS @ 100' C-C

NOTE: AT THE END OF EACH NIGHTLY SHIFT, THE CONTRACTOR SHALL SWEEP THE PAVEMENT SURFACE CLEAN, PLACE TEMPORARY PAVEMENT MARKING AND REMOVE TRAFFIC CONTROL.

DRUMS SHALL NOT BE PLACED IN THE LANE WHICH IS OPEN TO TRAFFIC. THE CONTRACTOR SHALL USE ONE FOOT WIDE VERTICAL BARRICADES WITH STEADY BURN LIGHTS ALONG THE MILLING AND PAVING OPERATIONS. THE TYPE OF VERTICAL BARRICADES SHALL BE APPROVED IN WRITING BY THE ENGINEER PRIOR TO BEING USED ON THE PROJECT. DRUMS OR TYPE II BARRICADES SHALL BE USED TO DELINEATE ALL OPEN RAMPS THROUGH THE WORK ZONE.

| REVISIONS |      |
|-----------|------|
| NAME      | DATE |
|           |      |
|           |      |
|           |      |
|           |      |
|           |      |
|           |      |
|           |      |
|           |      |
|           |      |
|           |      |

ILLINOIS DEPARTMENT OF TRANSPORTATION

F.A.I. ROUTE 90  
KENNEDY EXPRESSWAY  
TRAFFIC CONTROL PLAN

SCALE: VERT. \_\_\_\_\_  
HORIZ. \_\_\_\_\_

DATE \_\_\_\_\_ DRAWN BY \_\_\_\_\_  
CHECKED BY \_\_\_\_\_

PLOT DATE = 2/6/2006  
 FILE NAME = I:\2006\122884\122884.dwg  
 PLOT SCALE = 1/8" = 1'-0"  
 REFERENCE = REF#