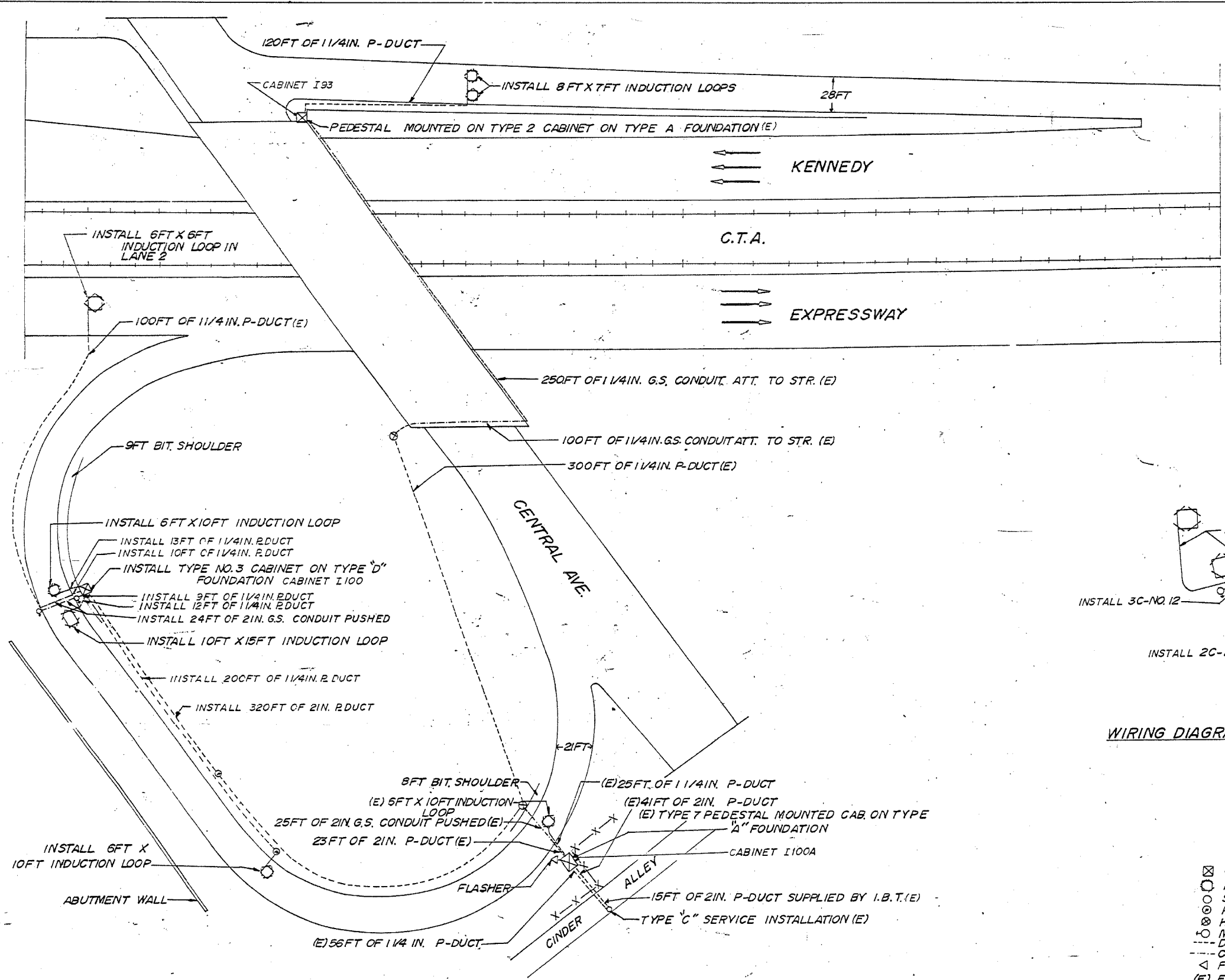
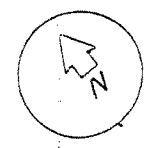
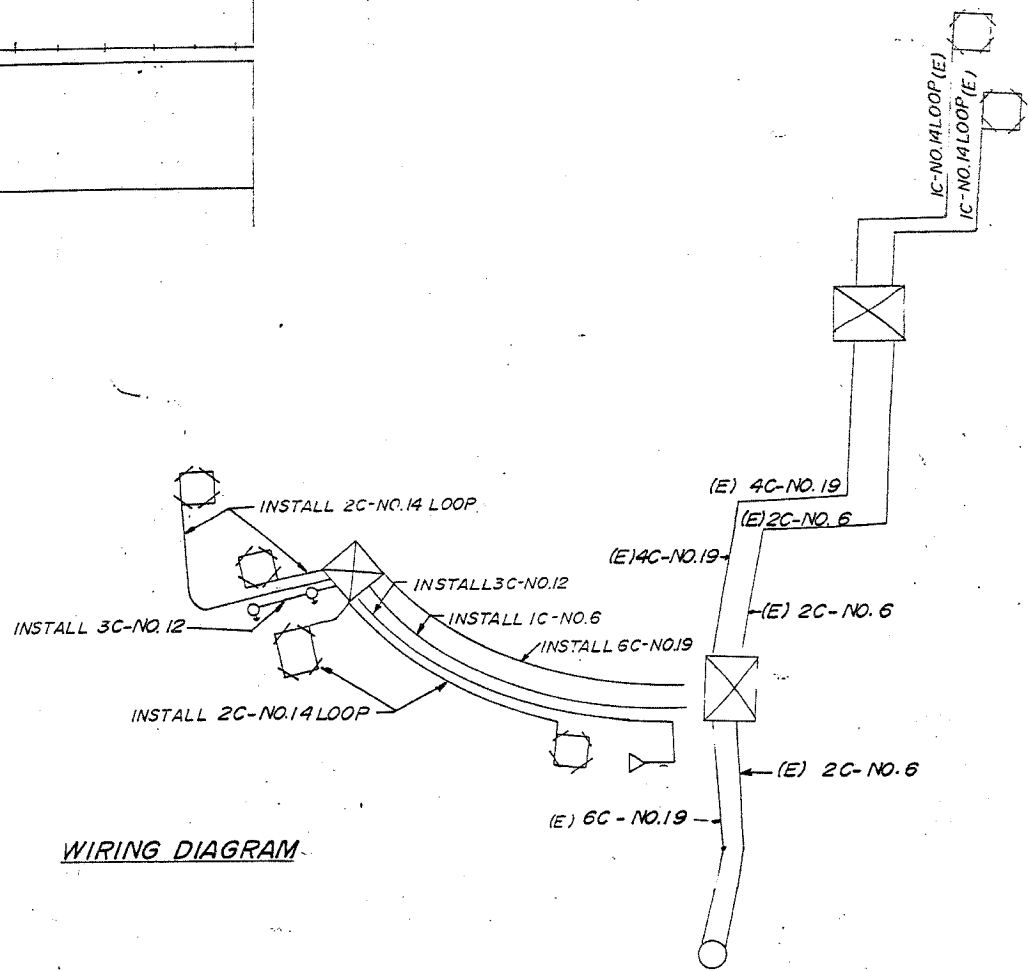


F.A.I. RTE.	SECTION	COUNTY	TOTAL SHEETS	SHEET NO
90		COOK	81	51
STA.	TO STA.			
FED. ROAD DIST. NO. 1	ILLINOIS	FED. AID PROJECT		
(1012, 1214, 1415, & 1517) RS-3				

62746



PLAN



WIRING DIAGRAM

- LEGEND**
- ⊠ CABINET
 - INDUCTION LOOP
 - SERVICE INSTALLATION
 - ⊙ PULL POINT
 - ⊗ HANDHOLE
 - ⊕ METERING SIGNAL
 - DUCT
 - CONDUIT
 - △ FLASHER
 - (E) EXISTING

FOR INFORMATION ONLY

REVISIONS	
NAME	DATE

ILLINOIS DEPARTMENT OF TRANSPORTATION
 F.A.I. ROUTE 90
 KENNEDY EXPRESSWAY
 INDUCTION LOOP PLANS
 CENTRAL AVENUE

SCALE: VERT. NONE
 HORIZ. DATE 04/05/2004

DRAWN BY
 CHECKED BY

04/05/2004 09:38:06 04/05/2004

04/05/2004 04:05:2004