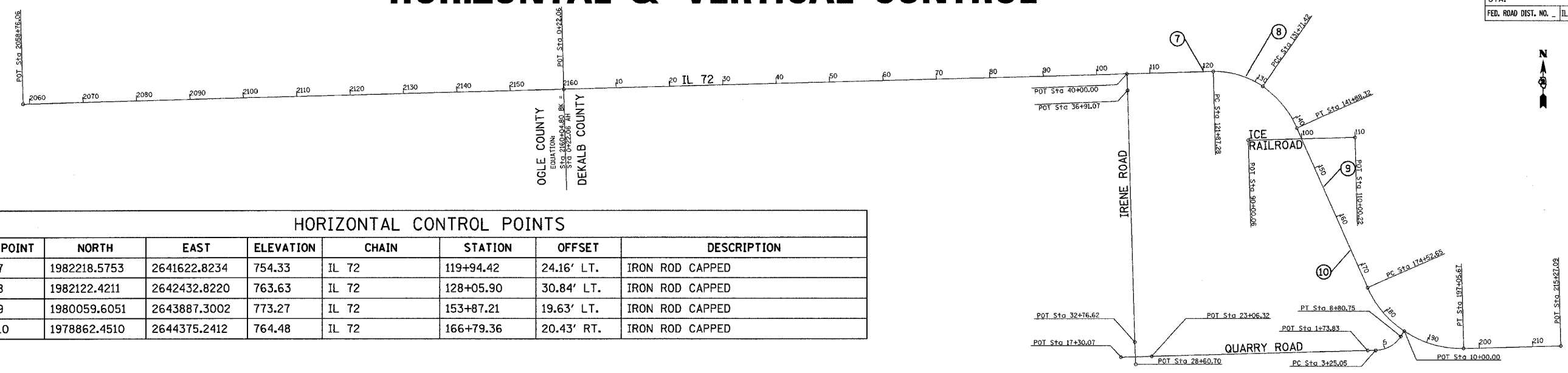


HORIZONTAL & VERTICAL CONTROL

CONTRACT NO. 64858				
F.A.P. RTE.	SECTION	COUNTY	TOTAL SHEETS	SHEET NO.
553	125VBR-1	DEKALB	55	5
STA.		TO STA.		
FED. ROAD DIST. NO. -		ILLINOIS FED. AID PROJECT		



HORIZONTAL CONTROL POINTS

POINT	NORTH	EAST	ELEVATION	CHAIN	STATION	OFFSET	DESCRIPTION
7	1982218.5753	2641622.8234	754.33	IL 72	119+94.42	24.16' LT.	IRON ROD CAPPED
8	1982122.4211	2642432.8220	763.63	IL 72	128+05.90	30.84' LT.	IRON ROD CAPPED
9	1980059.6051	2643887.3002	773.27	IL 72	153+87.21	19.63' LT.	IRON ROD CAPPED
10	1978862.4510	2644375.2412	764.48	IL 72	166+79.36	20.43' RT.	IRON ROD CAPPED

Chain IL72 contains:
1000 1001 CUR 200 CUR 210 CUR 220 1002

Beginning chain IL72 description
=====

Point 1000 N 1,981,608.1985 E 2,619,530.1330 Sta 2058+76.06
Course from 1000 to 1001 N 88° 28' 48.28" E Dist 10,128.7440
End Region 1

Equation: Sta 2160+04.80 (BK) = Sta 0+22.06 (AH)
Begin Region 2

Point 1001 N 1,981,876.8586 E 2,629,655.3133 Sta 0+22.06
Course from 1001 to PC 200 N 88° 28' 48.28" E Dist 12,165.2203

Curve Data

Curve 200
P.I. Station 126+96.58 N 1,982,213.0444 E 2,642,325.3810
Delta = 36° 23' 25.66" (RT)
Degree = 3° 41' 51.70"
Tangent = 509.3067
Length = 984.1391
Radius = 1,549.5000
External = 81.5560
Long Chord = 967.6808
Mid. Ord. = 77.4780
P.C. Station 121+87.28 N 1,982,199.5353 E 2,641,816.2535
P.T. Station 131+71.42 N 1,981,921.8615 E 2,642,743.2397
C.C. N 1,980,650.5805 E 2,641,857.3532
Back = N 88° 28' 48.29" E
Ahead = S 55° 07' 46.05" E
Chord Bear = S 73° 19' 28.88" E

Course from PT 200 to PC 210 N 34° 52' 07.44" E Dist 0.0000

Curve Data

Curve 210
P.I. Station 136+92.80 N 1,981,623.7750 E 2,643,171.0052
Delta = 31° 10' 42.35" (RT)
Degree = 3° 03' 57.66"
Tangent = 521.3817
Length = 1,016.9039
Radius = 1,868.7375
External = 71.3704
Long Chord = 1,004.4035
Mid. Ord. = 68.7449
P.C. Station 131+71.42 N 1,981,921.8615 E 2,642,743.2397
P.T. Station 141+88.32 N 1,981,147.2880 E 2,643,382.6631
C.C. N 1,980,388.6634 E 2,641,674.8375
Back = S 55° 07' 46.06" E
Ahead = S 23° 57' 03.71" E
Chord Bear = S 39° 32' 24.88" E

Course from PT 210 to PC 220 S 23° 57' 03.71" E Dist 3,264.3347

Curve Data

Curve 220
P.I. Station 187+30.73 N 1,976,996.0163 E 2,645,226.6788
Delta = 67° 32' 42.86" (LT)
Degree = 2° 59' 52.79"
Tangent = 1,278.0711
Length = 2,253.0116
Radius = 1,911.1348
External = 387.9741
Long Chord = 2,124.7937
Mid. Ord. = 322.5036
P.C. Station 174+52.65 N 1,978,164.0362 E 2,644,707.8385
P.T. Station 197+05.67 N 1,977,029.3892 E 2,646,504.3141
C.C. N 1,978,939.8724 E 2,646,454.4107
Back = S 23° 57' 03.72" E
Ahead = N 88° 30' 13.42" E
Chord Bear = S 57° 43' 25.15" E

Course from PT 220 to 1002 N 88° 30' 13.42" E Dist 1,821.4210

Point 1002 N 1,977,076.9500 E 2,648,325.1140 Sta 215+27.09
=====

Ending chain IL72 description

Chain IRENE contains:
1003 1004

Beginning chain IRENE description
=====

Point 1003 N 1,981,847.9460 E 2,640,211.8560 Sta 36+91.07
Course from 1003 to 1004 N 2° 08' 49.52" W Dist 308.9282

Point 1004 N 1,982,156.6573 E 2,640,200.2820 Sta 40+00.00
=====

Ending chain IRENE description

Chain IRENES contains:
1005 1006

Beginning chain IRENES description
=====

Point 1005 N 1,976,728.6180 E 2,640,364.7290 Sta 28+60.70
Course from 1005 to 1006 N 2° 14' 34.17" W Dist 415.9226

Point 1006 N 1,977,144.2220 E 2,640,348.4520 Sta 32+76.62
=====

Ending chain IRENES description

Chain QUARRYE contains:
1009 CUR 230 1010

Beginning chain QUARRYE description
=====

Point 1009 N 1,976,989.0630 E 2,644,709.2320 Sta 1+73.83
Course from 1009 to PC 230 N 88° 47' 31.58" E Dist 151.2227

Curve Data

Curve 230
P.I. Station 6+26.77 N 1,976,998.6109 E 2,645,162.0677
Delta = 55° 22' 50.44" (LT)
Degree = 9° 57' 57.43"
Tangent = 301.7136
Length = 555.6988
Radius = 574.9153
External = 74.3602
Long Chord = 534.3179
Mid. Ord. = 65.8439
P.C. Station 3+25.05 N 1,976,992.2508 E 2,644,860.4211
P.T. Station 8+80.75 N 1,977,250.4627 E 2,645,328.2055
C.C. N 1,977,567.0383 E 2,644,848.3019
Back = N 88° 47' 31.62" E
Ahead = N 33° 24' 41.18" E
Chord Bear = N 61° 06' 06.40" E

Course from PT 230 to 1010 N 33° 24' 41.29" E Dist 119.2467

Point 1010 N 1,977,350.0024 E 2,645,393.8684 Sta 10+00.00
=====

Ending chain QUARRYE description

Chain QUARRYW contains:
1007 1008

Beginning chain QUARRYW description
=====

Point 1007 N 1,976,860.0930 E 2,640,089.4600 Sta 17+30.07
Course from 1007 to 1008 N 88° 21' 40.65" E Dist 576.2497

Point 1008 N 1,976,876.5720 E 2,640,665.4740 Sta 23+06.32
=====

Ending chain QUARRYW description

FILE NAME = G:\BUSHY\CDN
LEVELS
PLOT SCALE = 1/8"=1'-0"
PLOT DATE = 1-1-85
OPERATOR = ARR
REF. REF. REF.