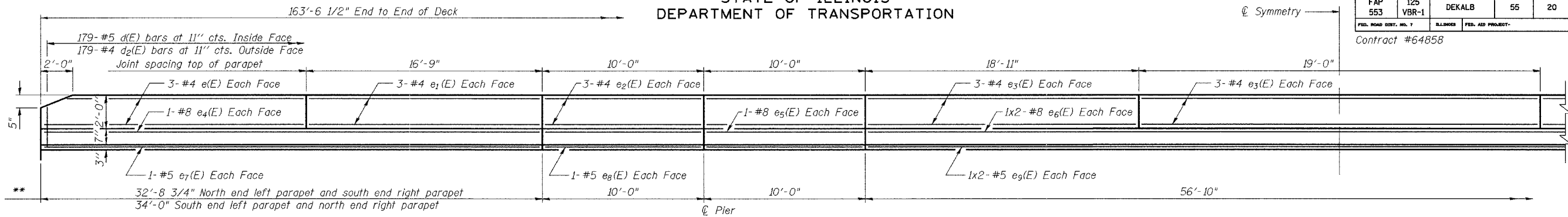


STATE OF ILLINOIS
DEPARTMENT OF TRANSPORTATION

ROUTE NO.	SECTION	COUNTY	SHEETS	NO.	SHEET NO. 5
FAP 553	125 VBR-1	DEKALB	55	20	20 SHEETS
FED. ROAD DIST. NO. 7	BLINDS	FED. AID PROJECT-			

Contract #64858



** Aluminum sheeted joint spacing in base of parapet

INSIDE ELEVATION OF PARAPET

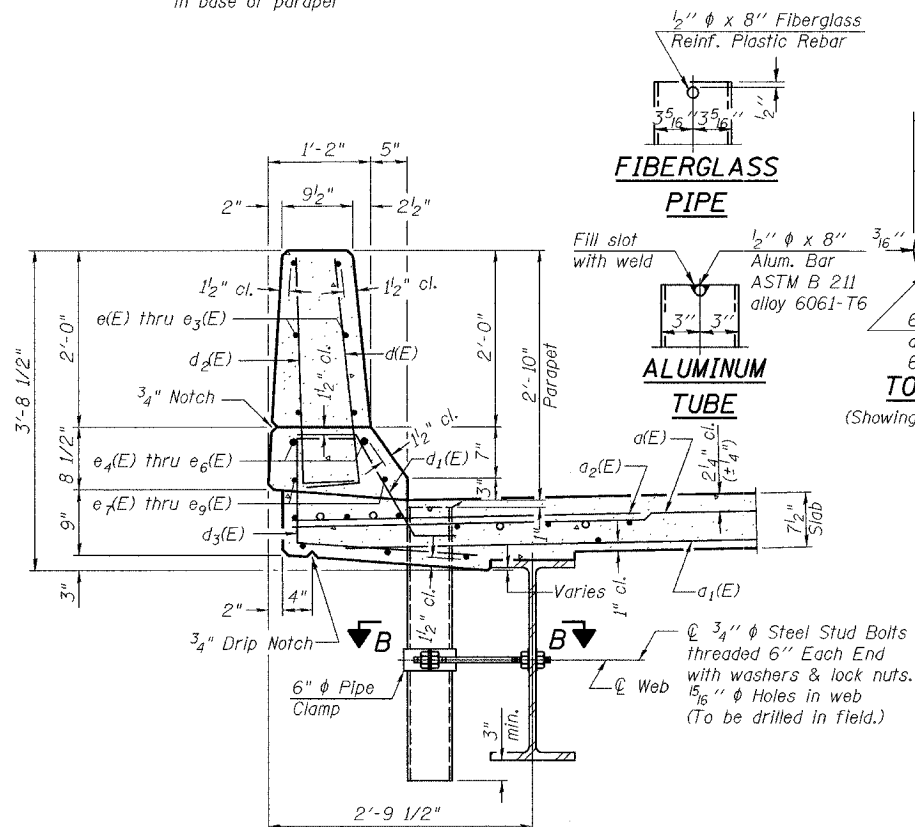
min lap #5 bar = 1'-8"
min lap #8 bar = 3'-8"

SUPERSTRUCTURE
BILL OF MATERIAL

Bar	No.	Size	Length	Shape
d(E)	262	#5	34'-7"	—
a1(E)	196	#5	32'-7"	—
a2(E)	262	#6	4'-6"	—
a3(E)	4	#5	37'-8"	—
b(E)	228	#5	28'-8"	—
b1(E)	72	#6	32'-0"	—
b2(E)	217	#5	24'-10"	—
d(E)	358	#5	3'-0"	—
d1(E)	346	#5	2'-5"	—
d2(E)	358	#4	3'-0"	—
d3(E)	358	#4	3'-7"	—
d4(E)	12	#5	2'-4"	—
e(E)	24	#4	16'-9"	—
e1(E)	24	#4	16'-6"	—
e2(E)	48	#4	9'-9"	—
e3(E)	36	#4	18'-8"	—
e4(E)	8	#8	33'-9"	—
e5(E)	16	#8	9'-9"	—
e6(E)	8	#8	30'-6"	—
e7(E)	8	#5	33'-9"	—
e8(E)	16	#5	9'-9"	—
e9(E)	8	#5	29'-2"	—
m(E)	4	#6	36'-2"	—
m1(E)	6	#6	37'-5"	—
m2(E)	24	#6	8'-7"	—
m3(E)	10	#6	6'-1"	—
m4(E)	4	#6	2'-9"	—
s(E)	62	#5	6'-4"	—
s1(E)	62	#4	9'-2"	—
v(E)	64	#5	3'-7"	—
Reinforcement Bars, Epoxy Coated		Pound	43310	
Concrete Superstructure		Cu. Yds.	198.3	

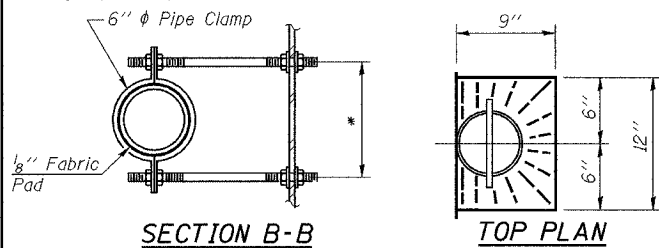
Reinforcement bars designated (E) shall be epoxy coated.
Bars indicated thus 1 x 2-#5 etc. indicates 1 line of bars with 2 lengths per line.

SUPERSTRUCTURE DETAILS
IL RTE 72 OVER
IOWA CHICAGO & EASTERN RAILROAD
FAP ROUTE 553
SECTION 125VBR-1
DEKALB COUNTY
STA. 144+14.40
SN 019-0047



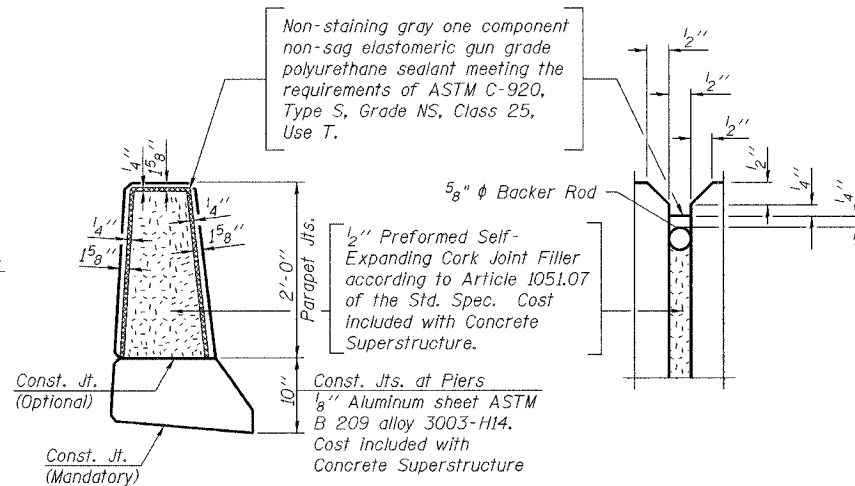
SECTION THRU PARAPET

* Dimension as required by Pipe Clamp



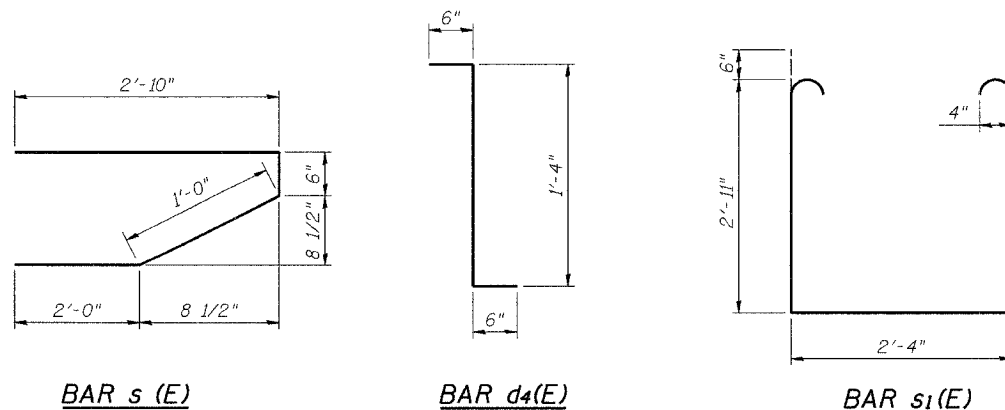
SECTION B-B

TOP PLAN



PARAPET JOINT DETAILS

Notes:
The exterior surfaces of the floor drains shall be painted with the finish coat as specified in the special provisions for Cleaning and Painting New Metal Structures. The exterior surfaces of the drains shall be cleaned according to Steel Structures Painting Council's Spec. SSPC-SPI prior to painting.
Fiberglass pipe shall conform to ASTM D 2996, with short-time rupture strength hoop tensile stress of 30,000 p.s.i. minimum.



BAR s (E)

BAR d4(E)

BAR s1(E)

BAR v(E)

REVISED 03-02-06

DESIGNED	JKC
CHECKED	JDA
DRAWN	ARR
CHECKED	JKC

S-1-D

10-22-04