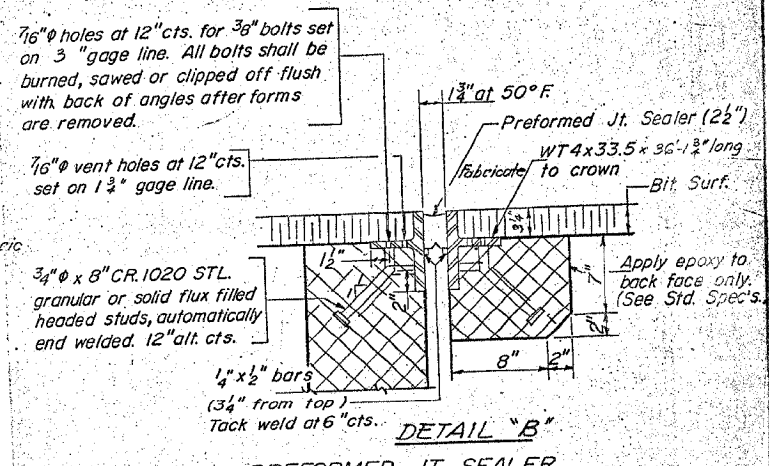
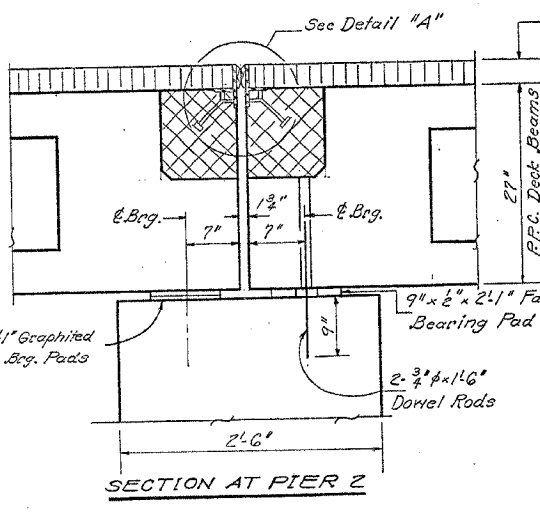
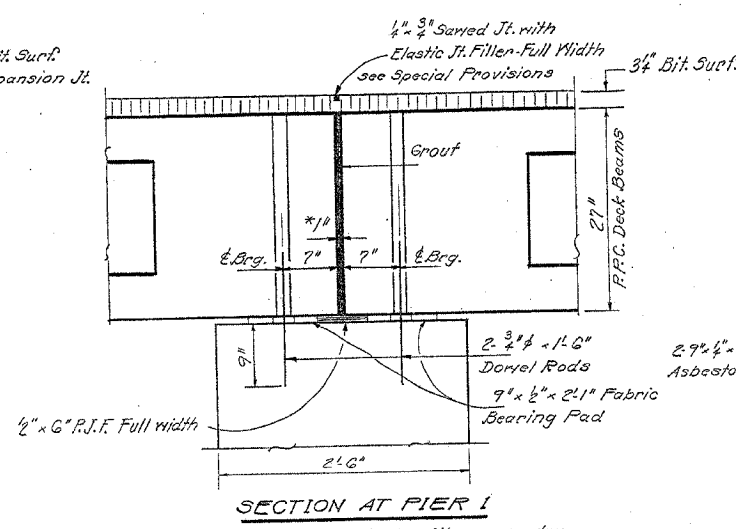
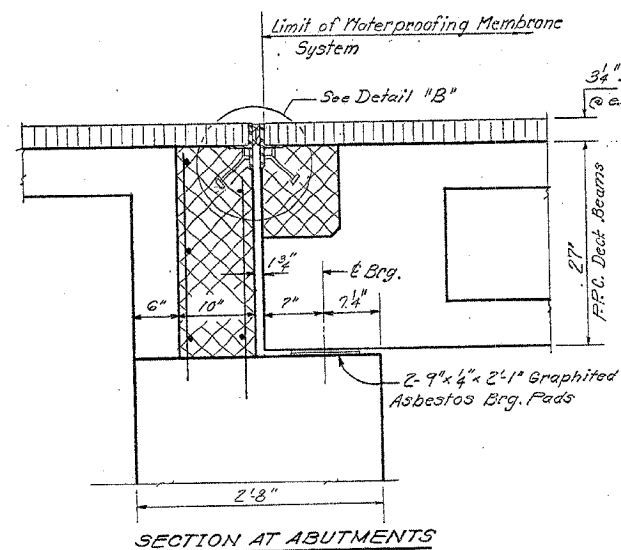
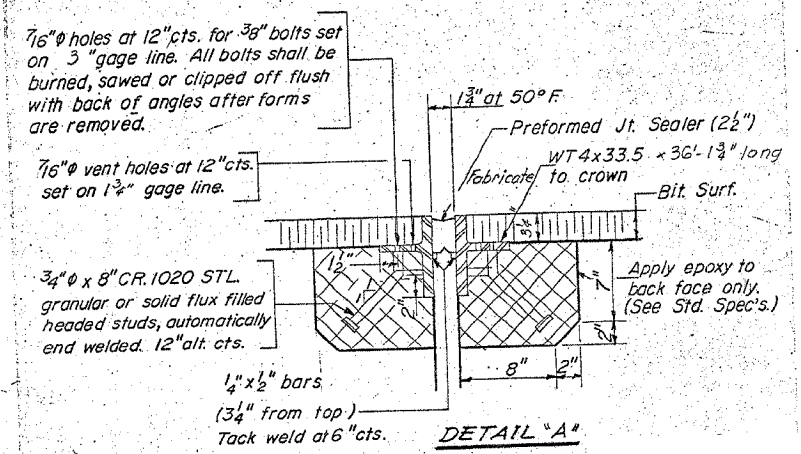


STATE OF ILLINOIS
DEPARTMENT OF TRANSPORTATION

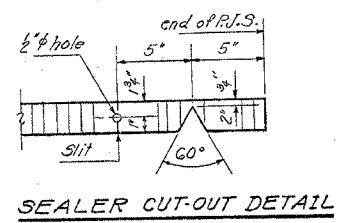
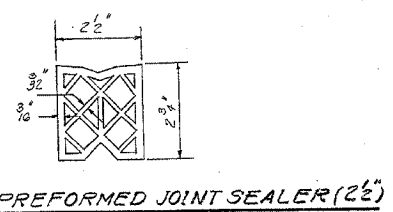
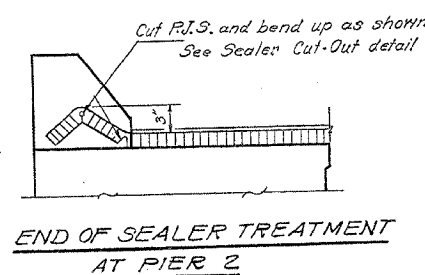
ROUTE NO.	SECTION	COUNTY	TOTAL SHEETS	SHEET NO.	SHEET NO. 3
FAP 553	125VBR-1	DEKALB	55	38	8 SHEETS
FED. ROAD DIST. NO. 7	ILLINOIS	FED. AID PROJECT			



SECTION AT PIER 1
*1\"/>



PREFORMED JT. SEALER
Note: Dimensions are at right angles. Cross-hatched areas to be poured after beams have been erected and j'ts. grouted. See end of beam detail for reinf. sheet # 2



* FOR INFORMATION ONLY

DESIGNED	R. u. matton	EXAMINED	JANUARY 31 1975
CHECKED	D.A. Rye	PASSED	
DRAWN	S. K. G.	APPROVED	
CHECKED	D.A. Rye	DIRECTOR OF HIGHWAYS	

SUPERSTRUCTURE-DETAILS
S.B.I.R.T. 72 SEC. 125 VBR
DEKALB COUNTY
STA. 259+79.17