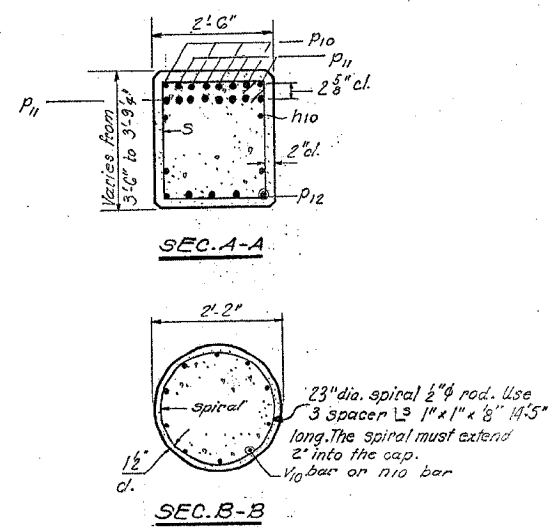
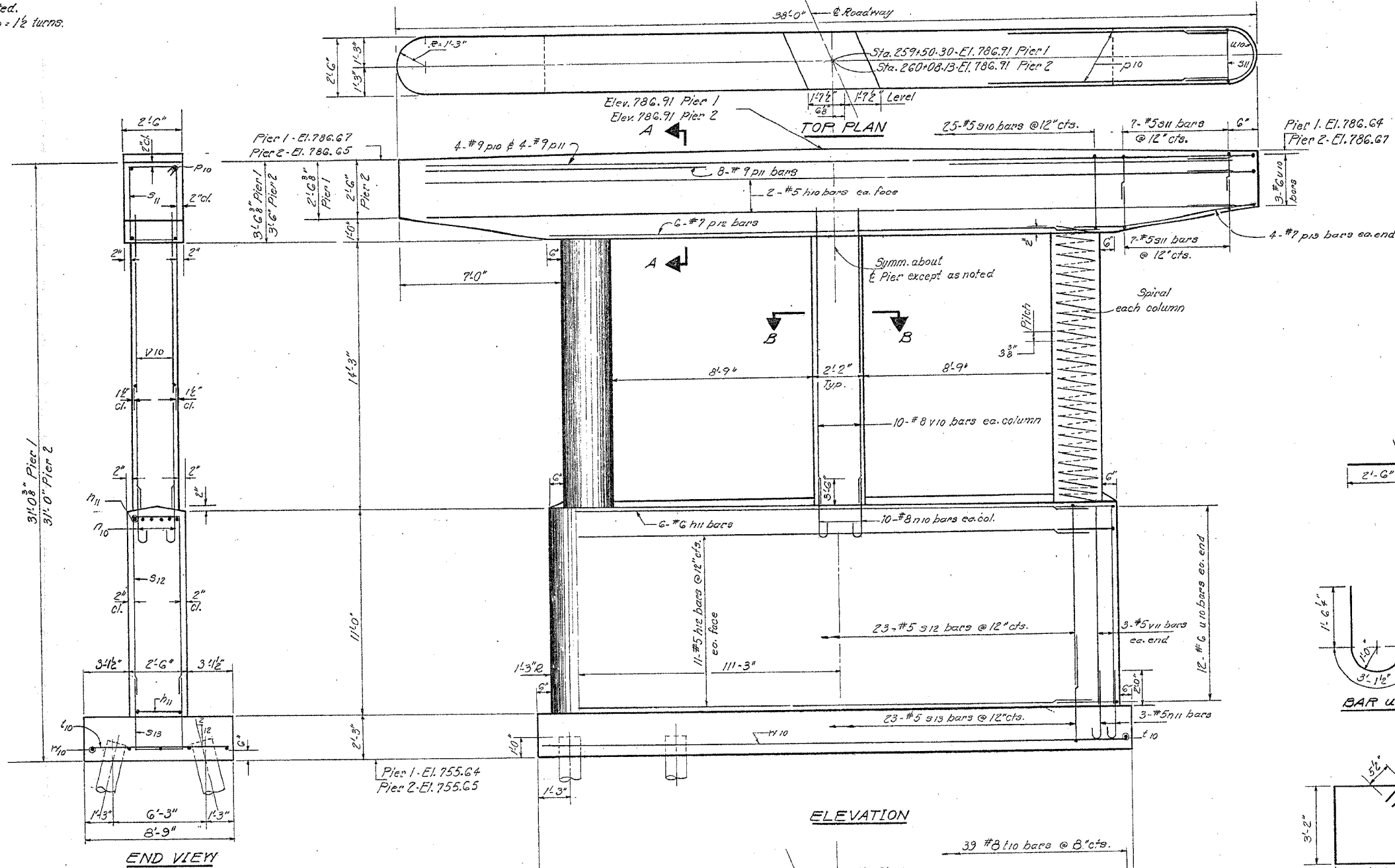


STATE OF ILLINOIS
DEPARTMENT OF TRANSPORTATION

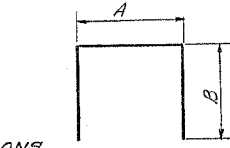
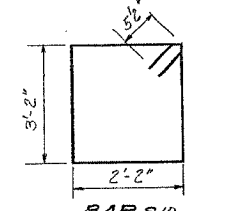
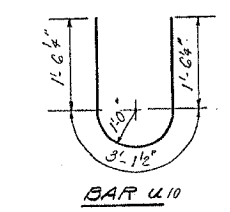
ROUTE NO.	SECTION	COUNTY	TOTAL SHEETS	SHEET NO.	SHEET NO. G
FAP 553	125VBR-1	DEKALB	55	41	8 SHEETS
FED. ROAD DIST. NO. 7		ILLINOIS	FED. AID PROJECT		

Notes:
All edges shall have standard $\frac{3}{8}$ " chamfers
except as noted.
Min. spiral lap = 1 1/2 turns.



TWO PIERS
BILL OF MATERIAL

Bar	No.	Size	Length	Shape
h10	8	#5	35'-6"	—
h11	12	#6	22'-6"	—
h12	44	#5	22'-6"	—
n10	60	#8	7'-11"	U
n11	12	#5	4'-4"	U
p10	8	#9	35'-6"	—
p11	48	#9	12'-0"	—
p12	12	#7	24'-0"	—
p13	16	#7	8'-9"	—
s10	50	#5	11'-7"	□
s11	56	#5	6'-8"	□
s12	46	#5	20'-2"	□
s13	46	#5	12'-2"	□
Spiral	6	#4	14'-5"	W
t10	78	#8	8'-6"	—
u10	60	#6	6'-2"	U
v10	60	#8	16'-3"	—
v11	12	#5	10'-9"	—
v12	16	#5	25'-9"	—
Class X Concrete		Cu. Yds.	122.8	
Reinforcement Bars		Lbs.	16440	
Concrete Piles		Lm. Ft.	959	
Test Piles (Concrete)		Each	1	



A & B DIMENSIONS

Bar	A	B
s11	2'-2"	2'-3"
s12	2'-2"	7'-0"
s13	2'-2"	5'-0"

FILE DATA

Type: Concrete
Capacity: Pier 1 - 35 Tons, Pier 2 - 35 Tons
Est. Length: Pier 1 - 36' - Pier 2 - 35'
No. Required: 27 - Pier 1 - 14
Pier 2 - 13 plus one test pile

DESIGNED	R. W. Mathew
CHECKED	D. A. Ryan
DRAWN	S. V. U.
CHECKED	D. A. Ryan

EXAMINED	Jan. 31 1975
PASSED	
APPROVED	

* FOR INFORMATION ONLY

PIERS 1 & 2
S.B.I. RT. 72 SEC. 125 VBR
DEKALB CO.
STA. 259+79.17