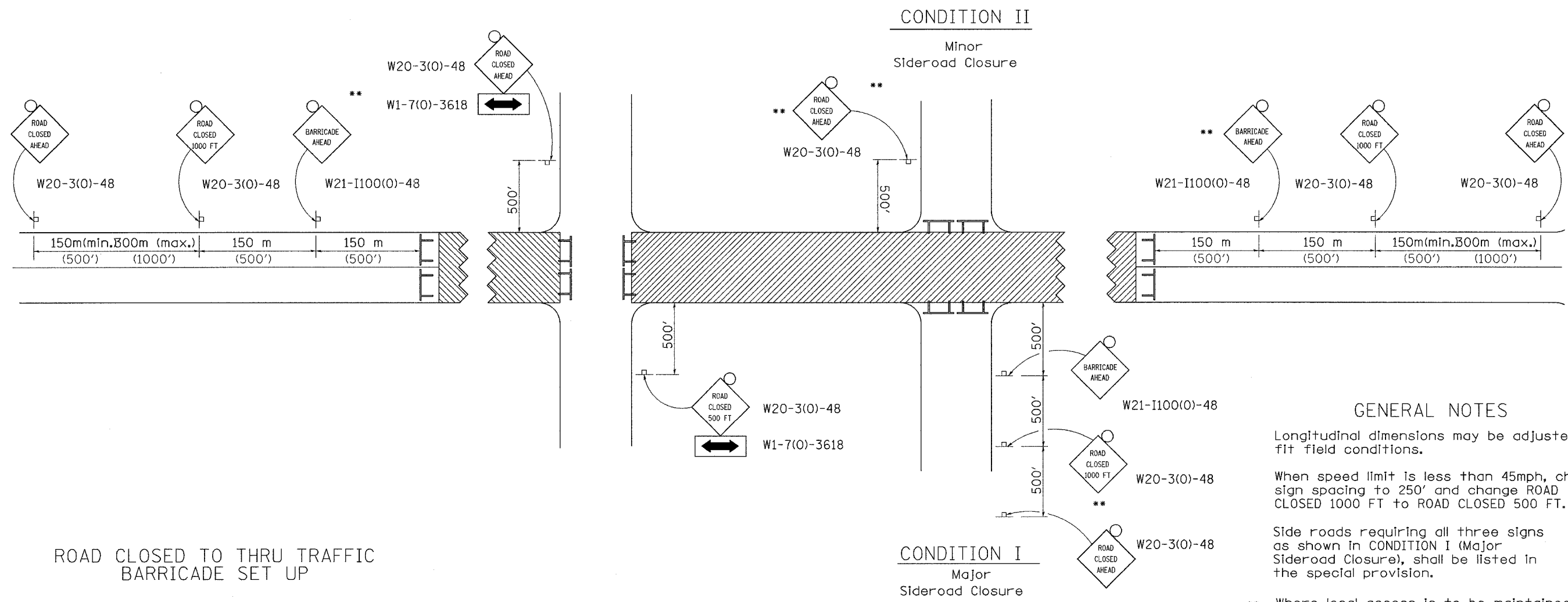


CONTRACT NO. 64858				
F.A.P. RTE.	SECTION	COUNTY	TOTAL SHEETS	SHEET NO.
553	125VBR-1	DEKALB	55	44
STA.		TO STA.		
FED. ROAD DIST. NO. - ILLINOIS FED. AID PROJECT				

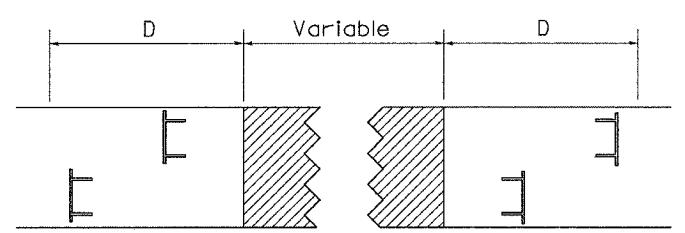
TRAFFIC CONTROL FOR ROAD CLOSURE



GENERAL NOTES

- Longitudinal dimensions may be adjusted to fit field conditions.
- When speed limit is less than 45mph, change sign spacing to 250' and change ROAD CLOSED 1000 FT to ROAD CLOSED 500 FT.
- Side roads requiring all three signs as shown in CONDITION I (Major Sideroad Closure), shall be listed in the special provision.
- ** Where local access is to be maintained, barricades are to be set up as shown in Road Closed to thru traffic.
- Type III Barricades and R11-2-4830 signs shall be as shown in "Road Closed To All Traffic" detail on Highway Standard 702001.

ROAD CLOSED TO THRU TRAFFIC BARRICADE SET UP



Type III Barricades and R11-4-4830 signs shall be as shown in "Road Closed To All Thru Traffic" detail on Highway Standard 702001. If the distance "D" exceeds 600 m (2000') an additional set of barricades and R11-4-4830 shall be placed at each end of the work area.

SYMBOLS

- Work area
- Type III Barricade with Flashers
- Sign with flashing light

All dimensions are in millimeters (inches) unless otherwise shown.

TYPICAL APPLICATION FOR ROAD CLOSURE

PLOT DATE = #DATE#
 FILE NAME = #FILE#
 PLOT SCALE = #SCALE#
 REFERENCE = #REF#