

F.A.I. ROUTE NO.	SECTION	COUNTY	TOTAL SHEETS	SHEET NO.
I-80	(06-4HB-1D)	BUREAU	32	1
FED. ROAD DIST. NO.	ILLINOIS	FED. AID PROJECT		
D-92-042-05			1/33	

**STATE OF ILLINOIS
DEPARTMENT OF TRANSPORTATION
DIVISION OF HIGHWAYS**

**PLANS FOR PROPOSED
FEDERAL AID HIGHWAY**

**F.A.I. (I-80)
SECTION (06-4HB-1) D
PROJECT NO. BHI-080-2(063)55
BUREAU COUNTY
C-92-036-06**

RANGE 9 EAST, 4th PRINCIPAL MERIDIAN

INDEX OF SHEETS

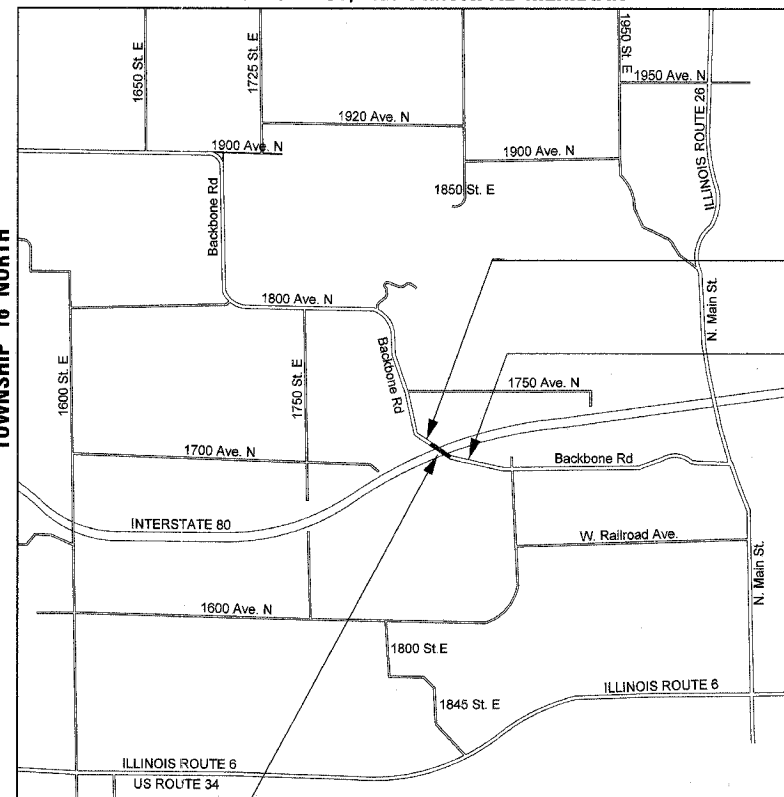
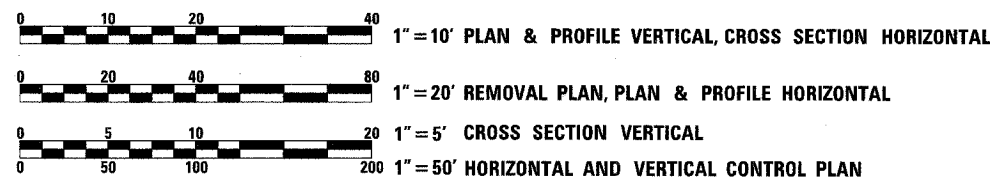
- 1 COVER SHEET & INDEX OF SHEETS
- 2 SUMMARY OF QUANTITIES & EARTHWORK SUMMARY
- 3 GENERAL NOTES, HIGHWAY STANDARDS & BITUMINOUS MIXTURE TABLE
- 4 TYPICAL SECTIONS & BITUMINOUS TAPERS
- 5 EXISTING HORIZONTAL AND VERTICAL CONTROL
- 6 ROADWAY REMOVAL PLAN
- 7 PLAN AND PROFILE
- 8-19 BRIDGE STRUCTURAL PLANS
- 19A CONCRETE PARAPET SLIPFORMING DETAIL
- 20 MAINTENANCE OF TRAFFIC
- 21-28 EXISTING BRIDGE PLANS (FOR INFORMATION ONLY)
- 29 DISTRICT 2 STANDARDS 29.2 & 38.4
- 30 DISTRICT 2 STANDARD 40.1
- 31-32 CROSS SECTIONS

TRAFFIC DATA

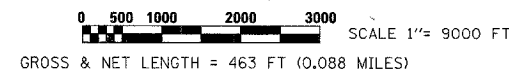
EXISTING ADT (2006) 1550
PROPOSED ADT (2026) 1950
SPEED LIMIT 55 MPH

FULL SIZE PLANS HAVE BEEN PREPARED USING STANDARD ENGINEERING SCALES. REDUCED SIZE PLANS WILL NOT CONFORM TO STANDARD SCALES. IN MAKING MEASUREMENTS ON REDUCED PLANS, THE ABOVE SCALES MAY BE USED.

SCALES:

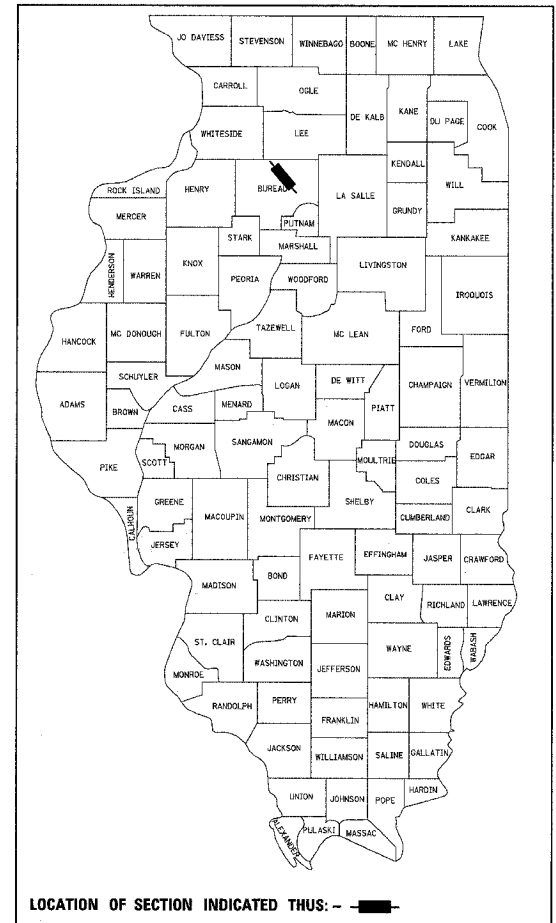


LOCATION MAP



BEGIN PROJECT STA. 97+82.00

END PROJECT STA. 102+45.00



LOCATION OF SECTION INDICATED THUS: --

**STATE OF ILLINOIS
DEPARTMENT OF TRANSPORTATION
DIVISION OF HIGHWAYS**

SUBMITTED FEB 9 20 06
Gregory L. Mow
DEPUTY DIRECTOR OF HIGHWAYS, REGION 2 ENGINEER
March 24, 2006
Mike Hines
ENGINEER OF DESIGN AND ENVIRONMENT
March 24, 2006
Milton R. Sees
DIRECTOR, DIVISION OF HIGHWAYS

DISTRICT 2, DIXON, IL

**PRINTED BY THE AUTHORITY OF
THE STATE OF ILLINOIS**

**J.U.L.I.E. JOINT UTILITY LOCATION INFORMATION
FOR EXCAVATION 1-800-892-0123**

SECTION (06-4HB-1)D
S.N. EXISTING & PROPOSED
006-0116 (STA. 2889+07.63 F.A.I. 80)
REMOVE EXISTING 6 1/2" CONCRETE DECK
AND REPLACE WITH 7 1/2" CONCRETE
DECK

**PRINCETON TOWNSHIP SECTION 6
CONTRACT NO. 64A82**

GRAEF, ANHALT, SCHLOEMER & ASSOCIATES, INC.
ENGINEERS & SCIENTISTS
8501 W. Higgins Road, Suite 280
Chicago, Illinois 60631
(773) 399-0112

PROJECT ENGINEER: ROBERT WAGNER
SENIOR SQUAD LEADER: MICHAEL A. YUSEF (815) 284-5354
CONSULTANT: GRAEF, ANHALT, SCHLOEMER AND ASSOCIATES, INC.
JOHN A. ZERFAS (773) 399-0112