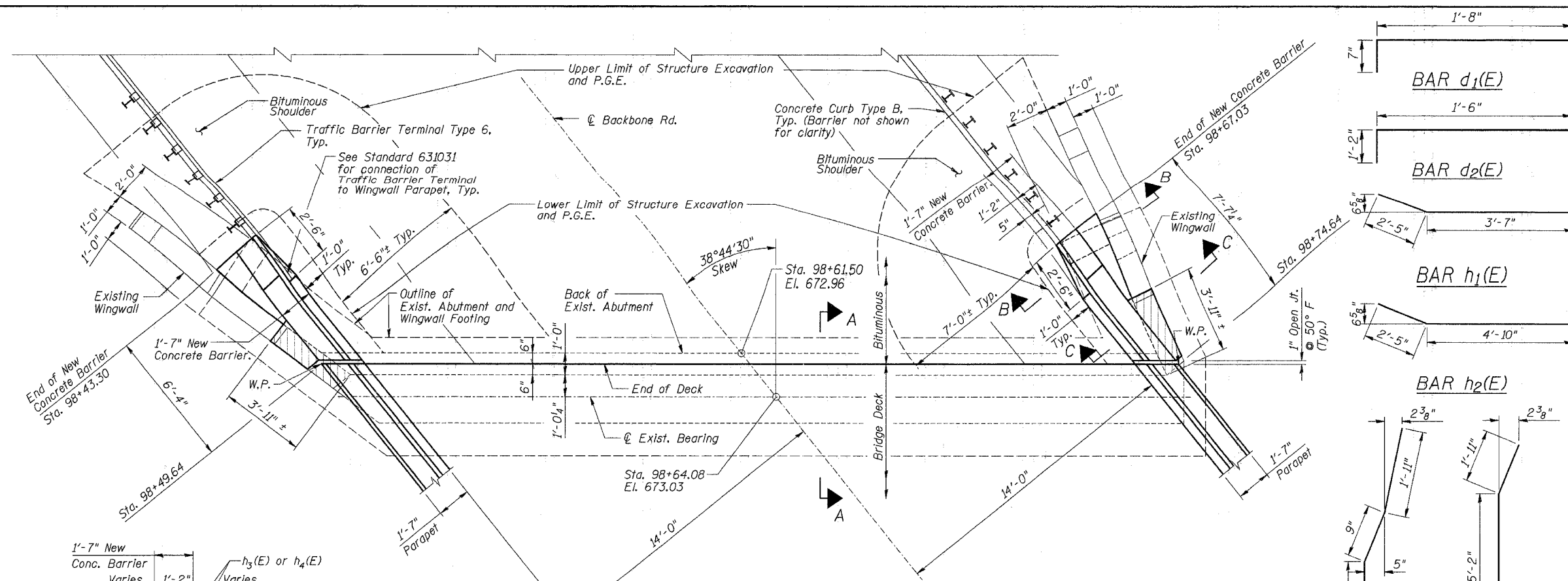


**WEST ABUTMENT
BILL OF MATERIAL**

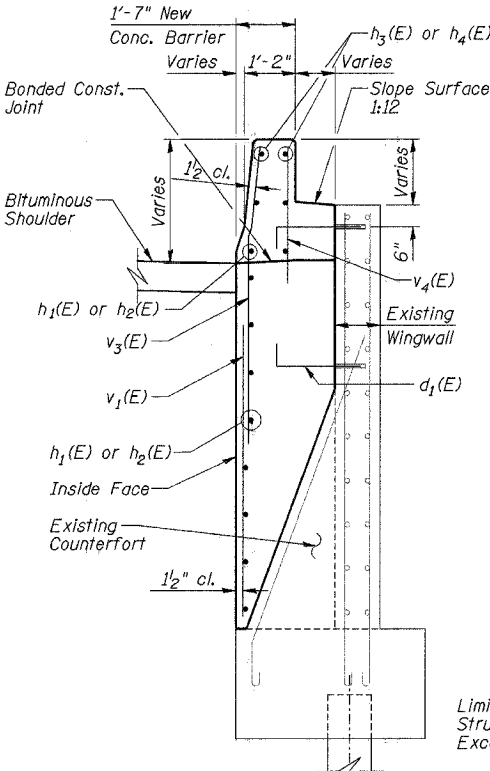
Bar	No.	Size	Length	Shape
$d_1(E)$	36	#5	2'-3"	—
$d_2(E)$	10	#5	2'-8"	—
$h_1(E)$	9	#4	6'-0"	—
$h_2(E)$	9	#4	7'-3"	—
$h_3(E)$	5	#4	6'-0"	—
$h_4(E)$	5	#4	7'-3"	—
$v_1(E)$	16	#6	6'-0"	—
$v_2(E)$	10	#6	7'-2"	—
$v_3(E)$	6	#6	7'-1"	—
$v_4(E)$	16	#6	5'-3"	—

Porous Granular Embankment	Cu. Yd.	22
Concrete Removal	Cu. Yd.	1.3
Structure Excavation	Cu. Yd.	27
Concrete Structures	Cu. Yd.	8
Reinforcement Bars, Epoxy Coated	Pound	680

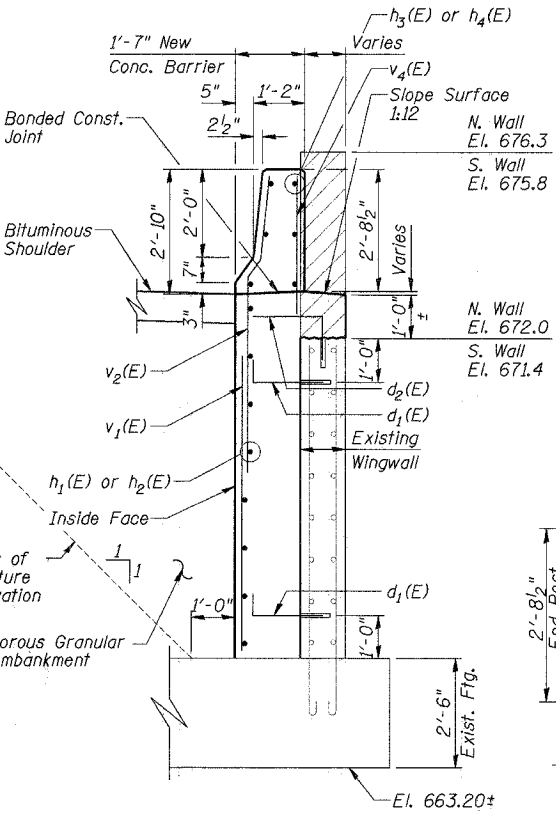
Reinforcement bars designated (E) shall be epoxy coated.



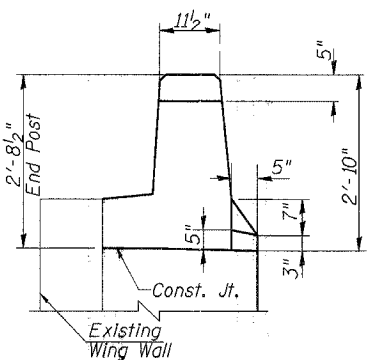
WEST ABUTMENT PLAN



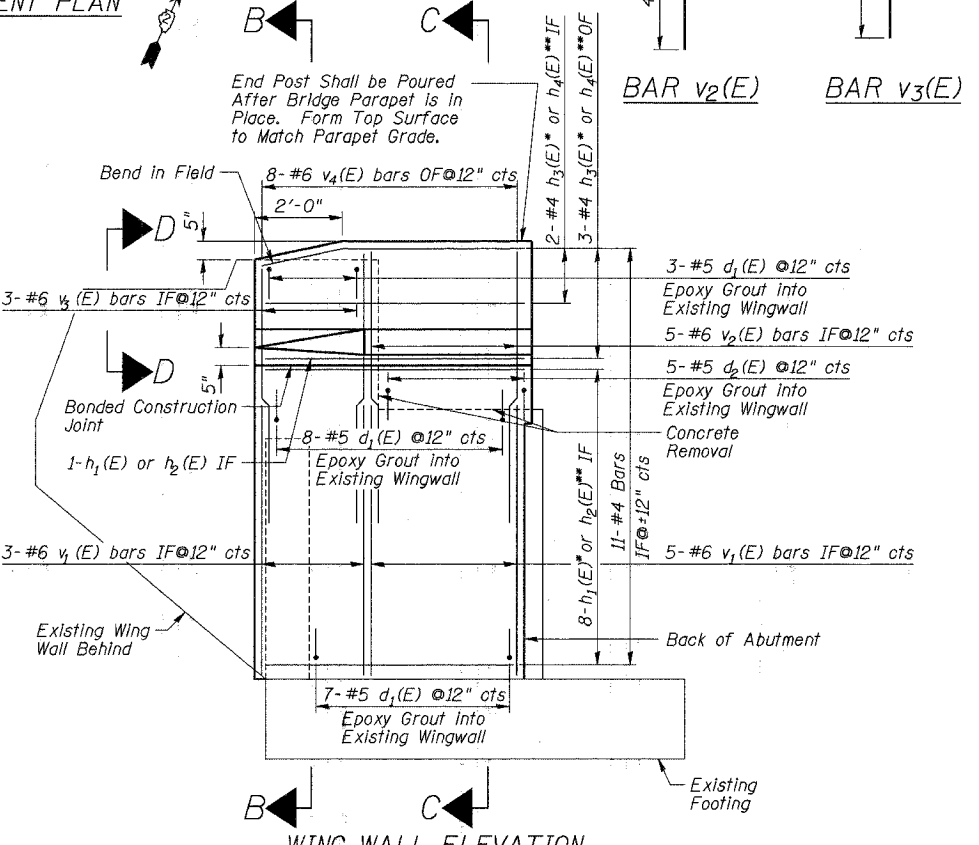
SECTION B-B



SECTION C-C



VIEW D-D



WING WALL ELEVATION

Inside Face of North Wall Shown.
South Wall Opposite Hand

Notes:

- Epoxy Grout $d_1(E)$ and $d_2(E)$ bars in $7/8"$ Diameter x 8" Minimum Drilled Holes According to Sec. 584 of Standard Specifications.
- IF = Inside Face
OF = Outside Face
- Horizontal Projections not Shown for Clarity.
- Quantity of Concrete in End Post included with Superstructure on Sheet 7 of 12.
- See Sheet 7 of 12 for Section A-A.

* North Wall
** South Wall

LEGEND

Portion of Exst. Wingwall to be removed. Quantity included with Concrete Removal.

WEST ABUTMENT PLAN & DETAILS
BACKBONE ROAD OVER I-80
F.A.I. ROUTE 80
SECTION (06-4HB-1D)
BUREAU COUNTY
STATION 2289+07.63 (F.A.I. 80)
S.N. 006-0116
DATE: JANUARY 30, 2006

GRAEF, ANHALT, SCHLOEMER & ASSOCIATES INC
CHICAGO ILLINOIS

95200401420014014-06 Vias Structural Final I-30-06 V014-06-struct.dgn 02/08/2006 12:07 PM

DESIGNED	D.F.W.
CHECKED	J.A.Z.
DRAWN	T.J.L.
CHECKED	D.F.W.