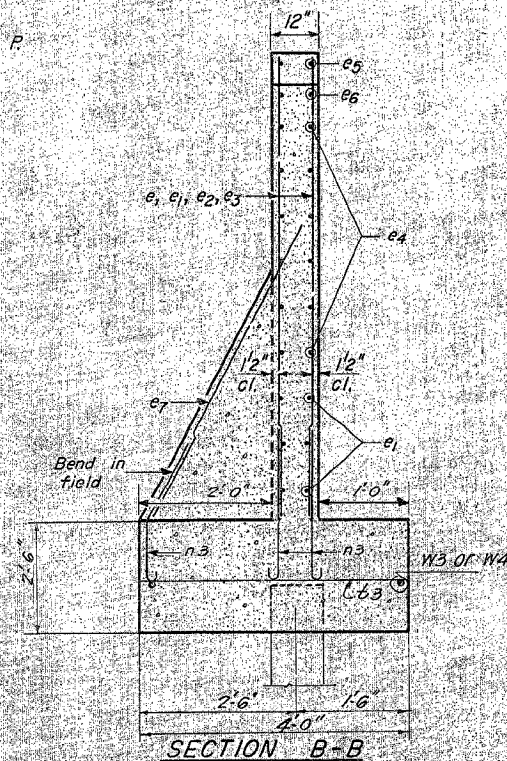
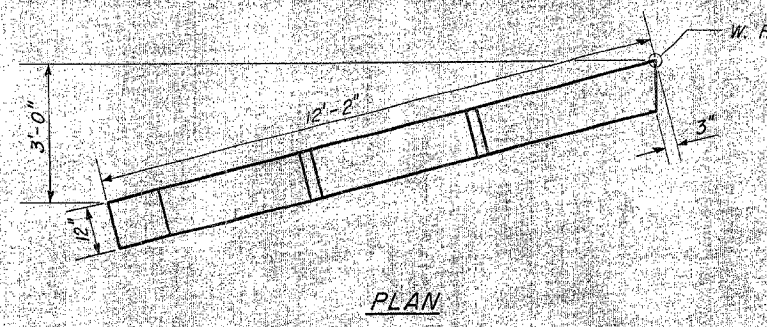
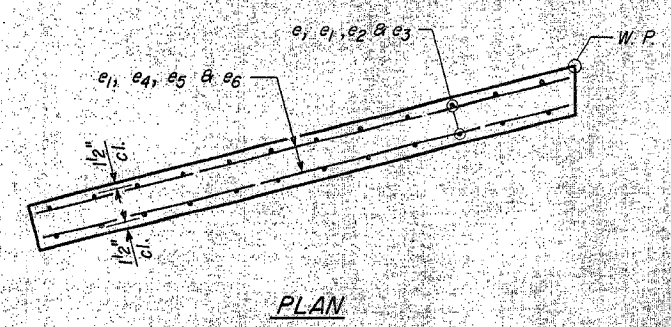
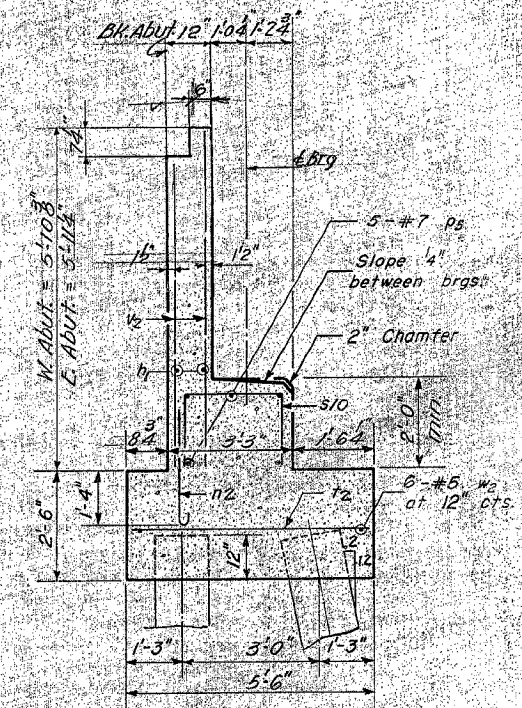
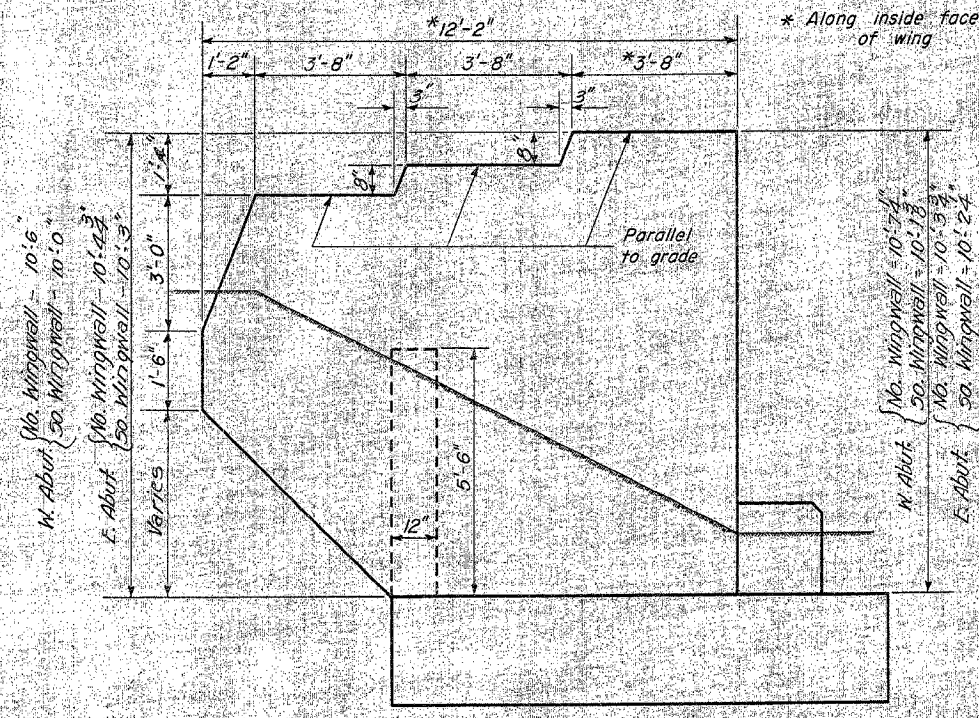
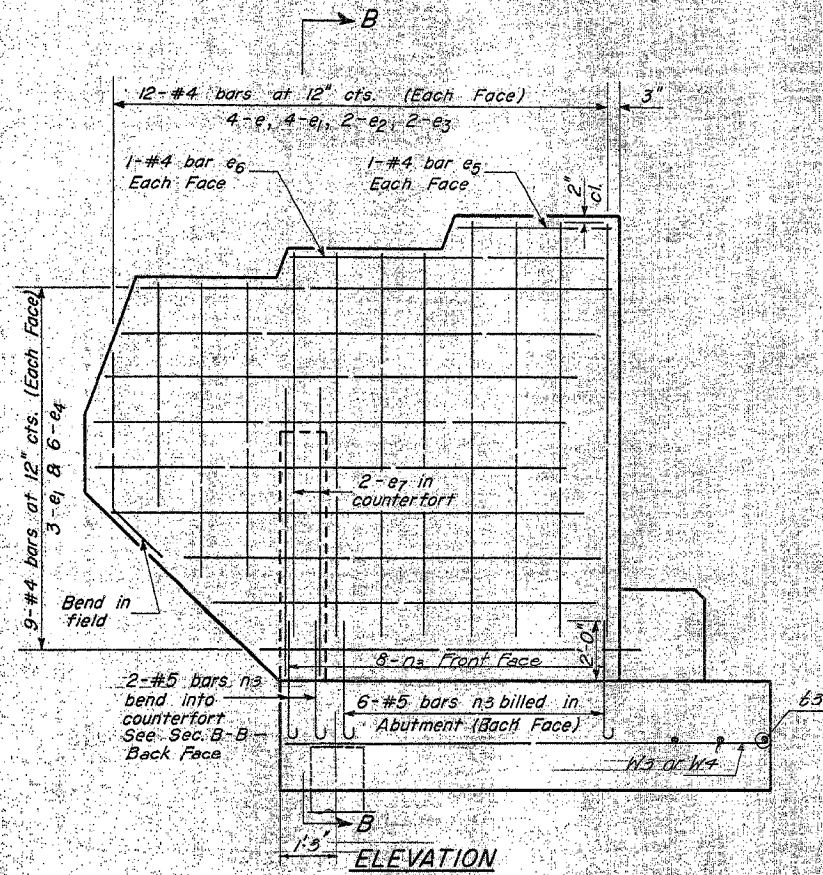


STATE OF ILLINOIS
DEPARTMENT OF PUBLIC WORKS & BUILDINGS
DIVISION OF HIGHWAYS

ROUTE NO.	SECTION	COUNTY	TOTAL SHEETS	SHEET NO.
FAS 244	(06-4HB-1)D	BUREAU	33	27
FED. ROAD DIST. NO. 1		ILLINOIS	FED. AID PROJECT	

SHEET NO. 3
OF 7 SHEETS



FOUR END POSTS
BILL OF MATERIAL

Bar	No.	Size	Length	Shape
e	32	#4	9'-3"	—
e1	56	#4	8'-6"	—
e2	16	#4	6'-6"	—
e3	16	#4	5'-0"	—
e4	48	#4	10'-6"	—
e5	8	#4	3'-5"	—
e6	8	#4	7'-0"	—
e7	8	#5	7'-0"	—

Wingwall Concrete included in Abutment Bill of Materials
Reinforcement bars for 4 Wingwalls (1080 lbs) included in Abutment Bill of Materials

* FOR INFORMATION ONLY

DESIGNED *R. Kowal*
CHECKED *R. Kowal*
DRAWN *W. A. Sausaman*
CHECKED *W. A. Sausaman*

EXAMINED *W. G. Benson*
PASSED *W. G. Benson*
APPROVED *R. K. Burt*

FEB 18 1961

WINGWALL DETAILS
F.A.I. RT. 80-566-06-475-1
BUREAU COUNTY
STATION 1038+66.70