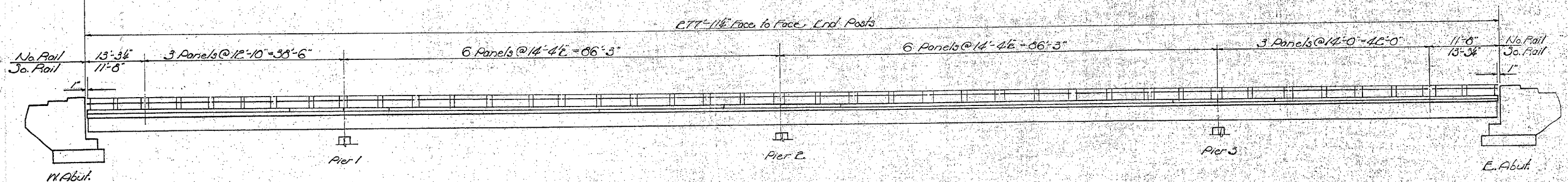


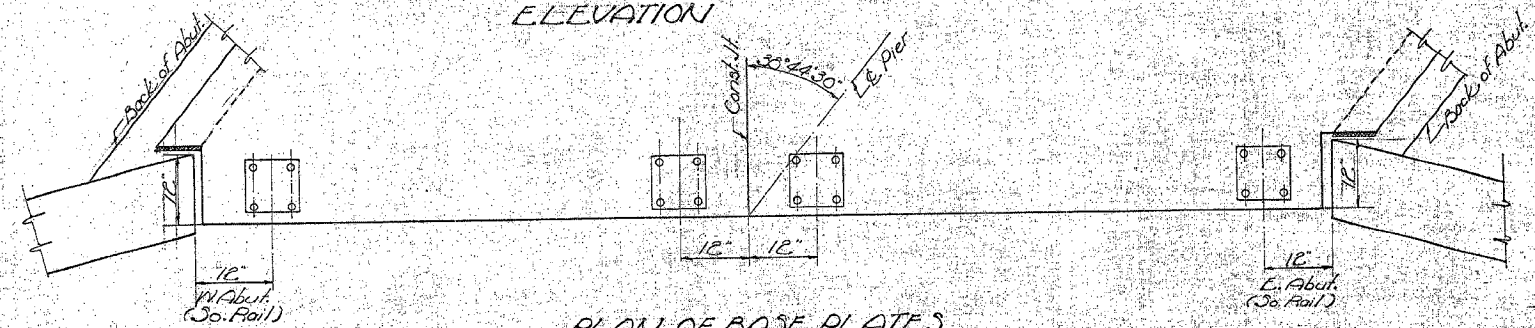
STATE OF ILLINOIS
DEPARTMENT OF PUBLIC WORKS & BUILDINGS
DIVISION OF HIGHWAYS

ROUTE NO.	SECTION	COUNTY	TOTAL SHEETS	SHEET NO.
FAS 244	(06-4HB-1)D	BUREAU	33	28
FED. ROAD DIST. NO. 7	ILLINOIS	FED. AID PROJECT		

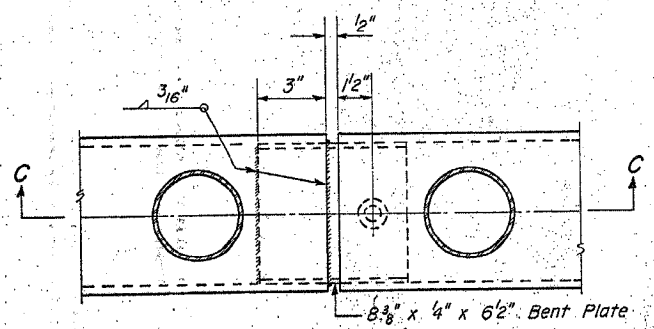
SHEET NO. 5
14 SHEETS



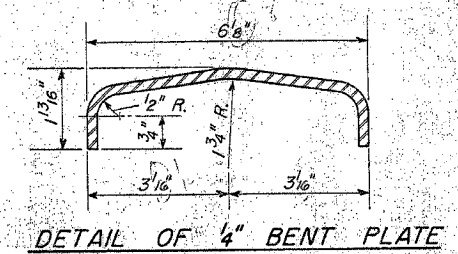
ELEVATION



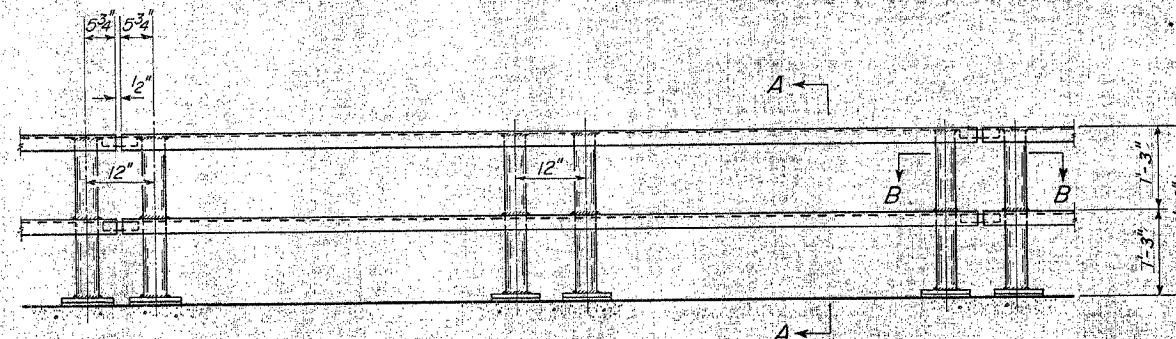
PLAN OF BASE PLATES



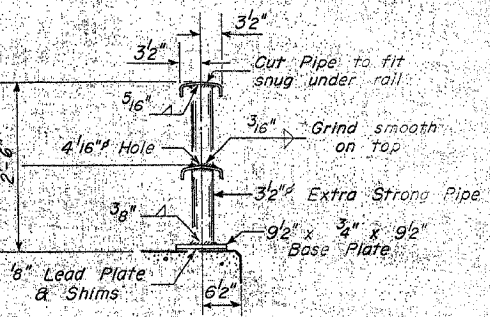
SECTION B-B



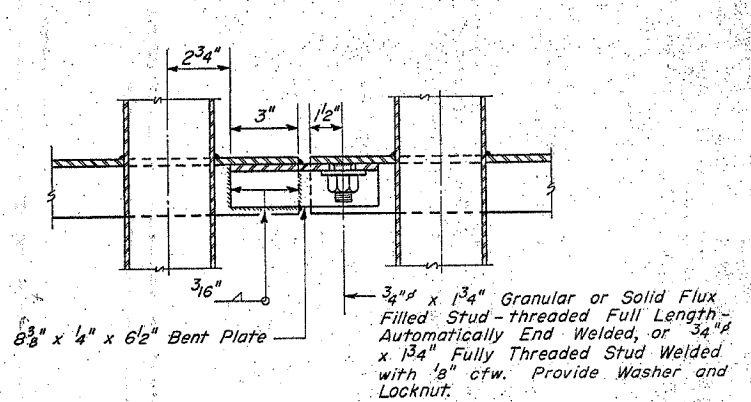
DETAIL OF 1/4" BENT PLATE



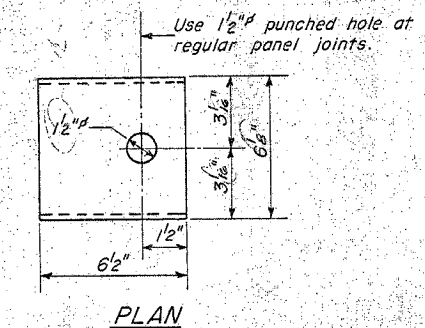
ELEVATION TYPICAL PANEL



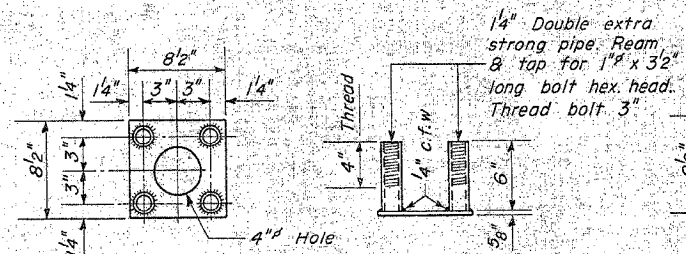
SECTION A-A



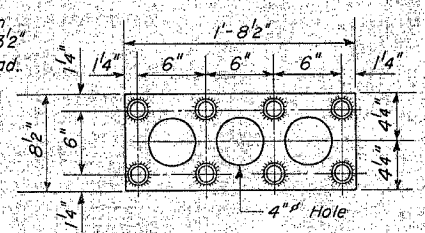
SECTION C-C



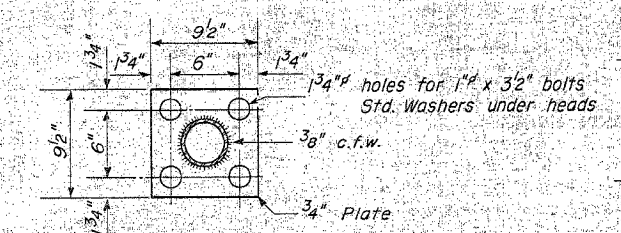
PLAN



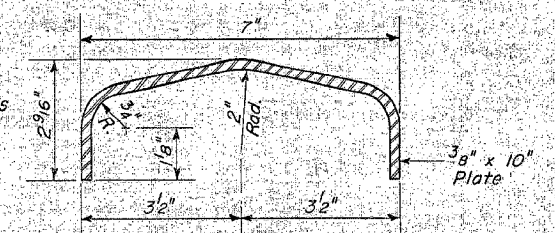
ANCHOR DEVICE
For Single Post at each End of Panel



ANCHOR DEVICE
For Double Posts within Each Panel



BASE PLATE
ALL POSTS



DETAIL OF RAIL

GENERAL NOTES
After erection all Bolts and Washers shall be spot painted with one coat of red lead and two coats of aluminum paint.
Provide 1-1/8" and 2-1/16" Shims for 50% of the Posts.

BILL OF MATERIAL

Item	Unit	Quantity
Metal Handrail	Lin. Ft.	556

* FOR INFORMATION ONLY

HANRAIL DETAILS
F.A.I. RT. 80 - SEC. 06-4HB-1
BUREAU COUNTY 4
STA. 1038+66.70 (F.A.I.)

DESIGNED *Abtwell*
CHECKED *R. Kowal*
DRAWN *W. A. Sausaman*
CHECKED *RK.*

EXAMINED *W. B. Bauman*
PASSED *E. E. Hunt*
APPROVED *R. K. Bantelmy*

FEB 18 1961