

F.A.I. RTE.	SECTION	COUNTY	TOTAL SHEETS	SHEET NO.
55	D-3 BRIDGE PAINTING 2006-1	LIVINGSTON & GRUNDY	12	1
		ILLINOIS	STATE AID PROJECT	

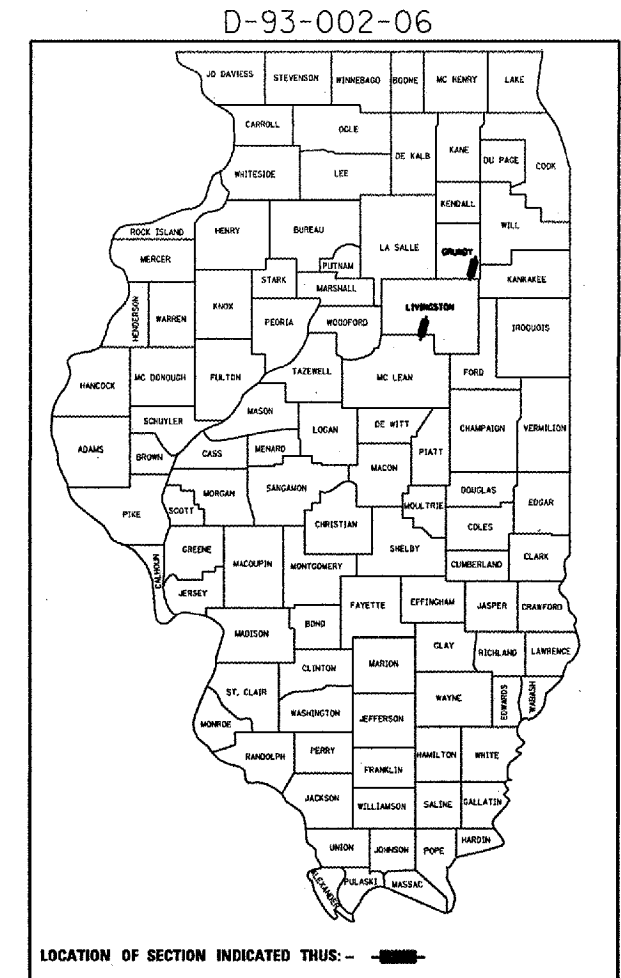
INDEX OF SHEETS

1. COVER SHEET
2. GENERAL NOTES
3. SUMMARY OF QUANTITIES
4. SCHEDULES
5. TRAFFIC CONTROL DETAILS - RIGHT LANE CLOSURE
6. TRAFFIC CONTROL DETAILS - LEFT LANE CLOSURE
- 7 - 9. EXISTING STRUCTURE PLANS - FOR INFORMATION ONLY
BRIDGE NO. 1 SN 053-0119
- 10 - 12. EXISTING STRUCTURE PLANS - FOR INFORMATION ONLY
BRIDGE NO. 2 SN 032-0078

STANDARDS

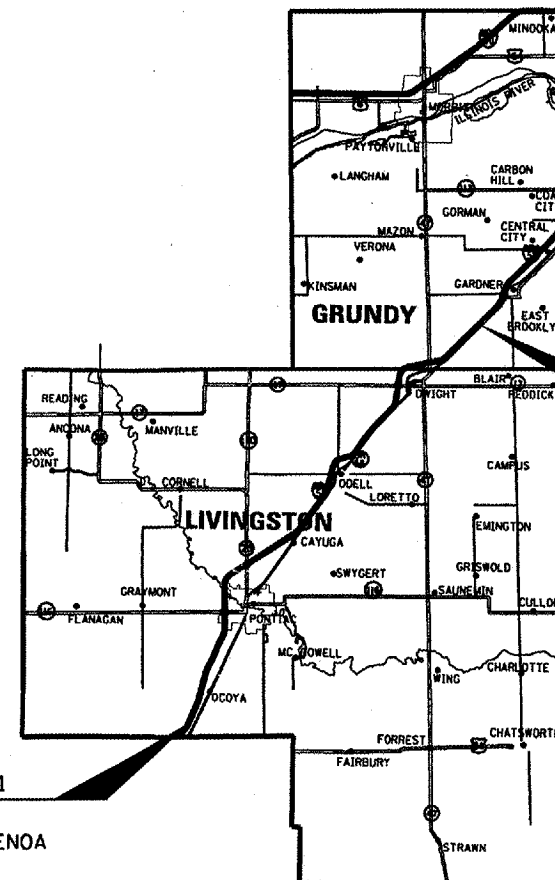
- | | |
|-----------|---|
| 635011-01 | REFLECTOR MARKER AND MOUNTING DETAILS |
| 701001-01 | OFF-ROAD OPERATIONS 2L, 2W, MORE THAN 4.5 m (15') AWAY |
| 701006-02 | OFF-ROAD OPERATIONS 2L, 2W, 4.5 m (15') TO 600 mm (24") FROM PAVEMENT EDGE FOR SPEEDS > 45 MPH |
| 701101-01 | OFF-ROAD OPERATIONS MULTILANE, 4.5 m (15') TO 600 mm (24") FROM PAVEMENT EDGE FOR SPEEDS > 45 MPH |
| 701106-01 | OFF-ROAD OPERATIONS, MULTILANE, MORE THAN 4.5 m (15') AWAY FROM PAVEMENT EDGE FOR SPEEDS > 45 MPH |
| 701201-02 | LANE CLOSURE, 2L, 2W, DAY ONLY, FOR SPEEDS P 45 MPH |
| 701400-02 | APPROACH TO LANE CLOSURE, FREEWAY/EXPRESSWAY |
| 701402-05 | LANE CLOSURE, FREEWAY/EXPRESSWAY, WITH BARRIER |
| 702001-06 | TRAFFIC CONTROL DEVICES |
| 704001-02 | TEMPORARY CONCRETE BARRIER |

STATE OF ILLINOIS
DEPARTMENT OF TRANSPORTATION
DIVISION OF HIGHWAYS
PROPOSED
HIGHWAY PLANS
FAI ROUTE 55
SECTION: D-3 BRIDGE PAINTING 2006-1
PROJECT:
LIVINGSTON & GRUNDY COUNTIES
C-93-044-06



FUNCTIONAL CLASSIFICATION
 RURAL: INTERSTATE
 FAI ROUTE 55 LIVINGSTON COUNTY
 2003 ADT = 21300
 P.V. = 71.4% M.U. = 23.5% S.U. = 5.2%

 RURAL: INTERSTATE
 FAI ROUTE 55 GRUNDY COUNTY
 2003 ADT = 21400
 P.V. = 64.0% M.U. = 28.0% S.U. = 7.9%



LOCATION: BRIDGE NO. 2
 T.R. 155 (GOODFARM ROAD)
 SN 032-0078
 ±3.0 MILES SW OF GARDNER

LOCATION: BRIDGE NO. 1
 C.H. 26 SN 053-0119
 ±0.5 MILES NORTH OF CHENOA

LOCATION MAP

NOT TO SCALE
 GROSS LENGTH = 1007 FT. = 0.19 MI.
 NET LENGTH = 1007 FT. = 0.19 MI.

MICROFILMED _____
 REEL NUMBER _____
 AWARDED _____
 RESIDENT ENGINEER _____
 AS BUILT CHANGES WERE MADE
 ON THE FOLLOWING SHEETS _____

J.U.L.I.E.
 JOINT UTILITY LOCATION INFORMATION FOR EXCAVATION
 1-800-892-0123

DISTRICT NO. 3 815-434-6131
PROJECT ENGINEER: DAVE BROVIK 815-434-8435
UNIT CHIEF: RON WOODSHANK 815-434-8521
CONTACT PERSON: MARK HARDEN 815-739-2481
TOWNSHIP: PIKE, GARFIELD

CONTRACT NO. 66635

STATE OF ILLINOIS
 DEPARTMENT OF TRANSPORTATION
 DIVISION OF HIGHWAYS

SUBMITTED 219 20 06
Gregory Mounts
 DEPUTY DIRECTOR OF HIGHWAYS, REGION ENGINEER
March 24, 2006
Mike Hene
 ENGINEER OF DESIGN AND ENVIRONMENT
March 24, 2006
William R. Sees
 DIRECTOR OF HIGHWAYS, CHIEF ENGINEER

PRINTED BY THE AUTHORITY
OF THE STATE OF ILLINOIS

Date: 01/19/06
 File: c:/projects/brt/bridgepainting/06/2006-1/details.dgn

F.A.I. RTE.	SECTION	COUNTY	TOTAL SHEETS	SHEET NO.
55	D-3 BRIDGE PAINTING 2006-1	LIVINGSTON & GRUNDY	12	2
ILLINOIS			STATE AID PROJECT	

GENERAL NOTES:

Plan dimensions and details relative to the existing roadway and structure have been taken from existing plans and are subject to nominal construction variations. It shall be the contractor's responsibility to verify such dimensions and details in the field and to make necessary approved adjustments prior to construction or ordering of materials. Such variations shall not be cause for additional compensation for a change in the scope of the work, however, the contractor will be paid for the quantity actually furnished at the unit price bid for the work.

The contractor shall be responsible for protecting utility property from construction operations as outlined in Article 107.31 of the Standard Specifications. The "Julie" Number is 1-800-892-0123. A minimum of forty-eight (48) hours advance notice is required.

Where section or subsection monuments are encountered, the engineer shall be notified before such monuments are removed. The contractor shall protect and carefully preserve all monuments until an authorized surveyor or agent has witnessed or otherwise referenced their location. The contractor shall be responsible for having an authorized surveyor reestablish any section or subsection monuments destroyed by his operations.

Any reference to a standard in these plans shall be interpreted to mean the edition as indicated by the subnumber listed on the index of sheets or the copy of the standard included in these plans.

The contractor shall be required to secure the waste containers that remain on the job site. This will entail that all waste containers can not be moved or opened during non-working hours.

Working days shall be charged until the contractor/subcontractor licensed to dispose of lead paint residue has removed the waste material from the job site according to all Federal, State and Local Laws and Ordinances.

The existing structural steel coating contains lead. The Contractor should take appropriate precautions to deal with the presence of lead on this project.

The SSPC-QP1 and SSPC-QP2 Painting Contractor Certifications will be required for this project.

Cleaning and painting of the existing structural steel shall be as specified in the Special Provision for Cleaning and Painting Existing Steel Structures. All existing steel shall be cleaned per Near White Blast Cleaning - SSPC-SP10. All existing steel shall be painted according to the requirements of Paint System 1 - OZ/EU. The color of the final finish coat for all interior steel surfaces shall be Gray, Munsell No. 5B 7/1. The color of the final finish coat for the exterior and bottom flange of the fascia beams shall be Reddish Brown, Munsell No. 2.5YR 3/4.

PREPARED BY: Rich Poulos
DISTRICT STUDIES & PLANS ENGINEER

DATE: 2/7/06

EXAMINED BY: [Signature]
DISTRICT CONSTRUCTION ENGINEER

[Signature]
DISTRICT MATERIALS ENGINEER

[Signature]
DISTRICT OPERATIONS ENGINEER

REVISIONS		ILLINOIS DEPARTMENT OF TRANSPORTATION
NAME	DATE	
		GENERAL NOTES SCALE: VERT. DRAWN BY RW HORIZ. CHECKED BY DATE 01/19/06

Date: 01/19/06
File: c:/projects/bridgepaint06/2006-1/details.dgn

F.A.I. RTE.	SECTION	COUNTY	TOTAL SHEETS	SHEET NO.
55	D-3 BRIDGE PAINTING 2006-1	LIVINGSTON & GRUNDY	12	3
		ILLINOIS	STATE AID PROJECT	

SUMMARY OF QUANTITIES

CONSTRUCTION CODE: **SFTY-2A**

CODE NO.	ITEM	UNIT	TOTAL QUANTITY	RURAL LIVINGSTON COUNTY 53-6HB-2	100% STATE GRUNDY COUNTY 32-2HVB
50600600	CLEANING AND PAINTING STEEL BRIDGE NO. 1	L SUM	1	1	
50600700	CLEANING AND PAINTING STEEL BRIDGE NO. 2	L SUM	1		1
50606401	CONTAINMENT AND DISPOSAL OF LEAD PAINT CLEANING RESIDUES BRIDGE NO. 1	L SUM	1	1	
50606402	CONTAINMENT AND DISPOSAL OF LEAD PAINT CLEANING RESIDUES BRIDGE NO.2	L SUM	1		1
67100100	MOBILIZATION	L SUM	1	0.5	0.5
70100207	TRAFFIC CONTROL AND PROTECTION, STANDARD 701402	EACH	4	2	2
70100450	TRAFFIC CONTROL AND PROTECTION, STANDARD 701201	L SUM	1	0.5	0.5
70400100	TEMPORARY CONCRETE BARRIER	FOOT	520	260	260
70400200	RELOCATE TEMPORARY CONCRETE BARRIER	FOOT	1120	560	560
X5067501	BRIDGE CLEANING AND PAINTING WARRANTY NUMBER 1	L SUM	1	1	
X5067502	BRIDGE CLEANING AND PAINTING WARRANTY NUMBER 2	L SUM	1		1
* Z0030250	IMPACT ATTENUATORS, TEMPORARY (NON-REDIRECTIVE), TEST LEVEL 3	EACH	2	1	1
* Z0030350	IMPACT ATTENUATORS, RELOCATE (NON-REDIRECTIVE), TEST LEVEL 3	EACH	6	3	3
Z0048665	RAILROAD PROTECTIVE LIABILITY INSURANCE	L SUM	1		1

* SFTY-3N

Date: 01/19/06
File: cr/projects/bridgepaint06/2006-1/details.dgn

REVISIONS		ILLINOIS DEPARTMENT OF TRANSPORTATION
NAME	DATE	
		<p>SUMMARY OF QUANTITIES</p> <p>SCALE: VERT. DRAWN BY RW HORIZ. CHECKED BY DATE 01/19/06</p>

F.A.I. RTE.	SECTION	COUNTY	TOTAL SHEETS	SHEET NO.
55	D-3 BRIDGE PAINTING 2006-1	LIVINGSTON & GRUNDY	12	4
		ILLINOIS	STATE AID PROJECT	

SCHEDULE FOR BRIDGE NO. 1
S.N. 053-0119 LIVINGSTON COUNTY

ITEM	UNIT	QUANTITY
CLEANING AND PAINTING STEEL BRIDGE NO. 1	L SUM	1
CONTAINMENT AND DISPOSAL OF LEAD PAINT CLEANING RESIDUES BRIDGE NO. 1	L SUM	1
MOBILIZATION	L SUM	0.5
TRAFFIC CONTROL AND PROTECTION STANDARD 701402	EACH	2
TRAFFIC CONTROL AND PROTECTION STANDARD 701201	L SUM	0.5
TEMPORARY CONCRETE BARRIER	FOOT	260
RELOCATE TEMPORARY CONCRETE BARRIER	FOOT	560
BRIDGE CLEANING AND PAINTING WARRANTY NO. 1	L SUM	1
IMPACT ATTENUATORS TEMPORARY (NON-DIRECTIVE) TEST LEVEL 3	EACH	1
IMPACT ATTENUATORS RELOCATE (NON-DIRECTIVE) TEST LEVEL 3	EACH	3

SCHEDULE FOR BRIDGE NO. 2
S.N. 032-0078 GRUNDY COUNTY



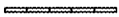



ITEM	UNIT	QUANTITY
CLEANING AND PAINTING STEEL BRIDGE NO. 2	L SUM	1
CONTAINMENT AND DISPOSAL OF LEAD PAINT CLEANING RESIDUES BRIDGE NO. 2	L SUM	1
MOBILIZATION	L SUM	0.5
TRAFFIC CONTROL AND PROTECTION STANDARD 701402	EACH	2
TRAFFIC CONTROL AND PROTECTION STANDARD 701201	L SUM	0.5
TEMPORARY CONCRETE BARRIER	FOOT	260
RELOCATE TEMPORARY CONCRETE BARRIER	FOOT	560
BRIDGE CLEANING AND PAINTING WARRANTY NO. 2	L SUM	1
IMPACT ATTENUATORS TEMPORARY (NON-DIRECTIVE) TEST LEVEL 3	EACH	1
IMPACT ATTENUATORS RELOCATE (NON-DIRECTIVE) TEST LEVEL 3	EACH	3
RAILROAD PROTECTIVE LIABILITY INSURANCE	L SUM	1

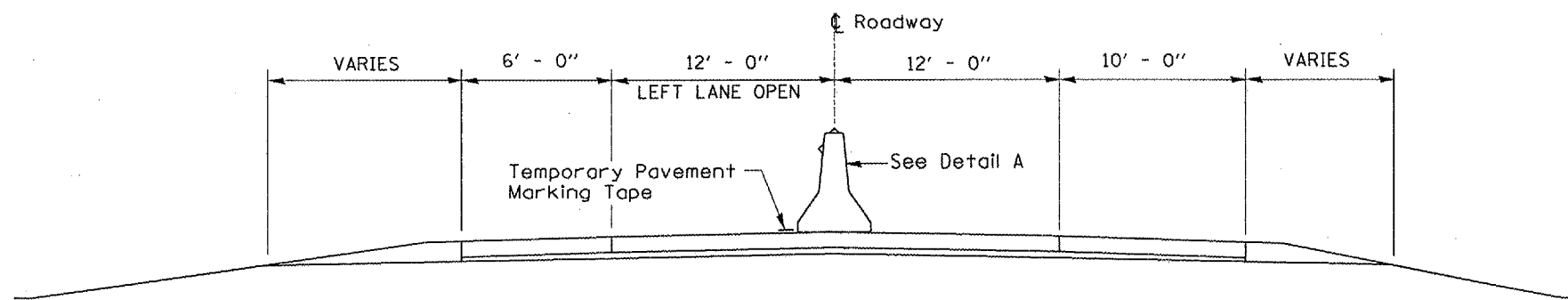
REVISIONS		ILLINOIS DEPARTMENT OF TRANSPORTATION
NAME	DATE	
		<p>SCHEDULES</p> <p>SCALE: VERT. DRAWN BY RW HORIZ. CHECKED BY DATE 01/19/06</p>

Date: 01/19/06
File: c:\projects\br1dgpaint06\2006-1\details.dgn

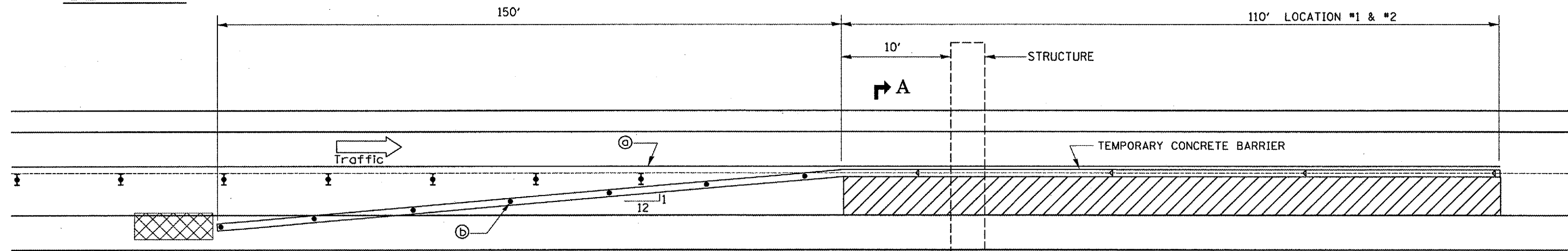
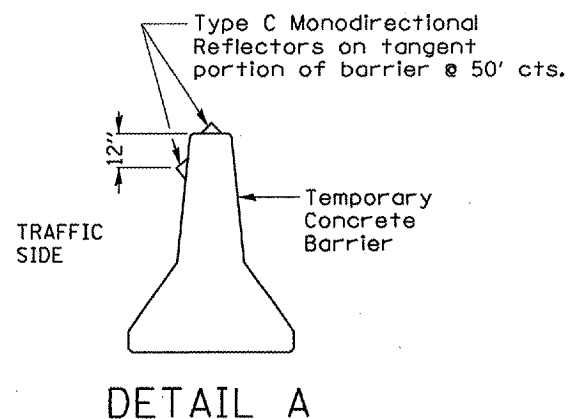
F.A.I. RTE.	SECTION	COUNTY	TOTAL SHEETS	SHEET NO.
55	D-3 BRIDGE PAINTING 2006-1	LIVINGSTON & GRUNDY	12	5
ILLINOIS			STATE AID PROJECT	

LENGEND

-  Work Zone
-  Type II barricade, drum or vertical barricade with steady burn monodirectional light
-  Temporary concrete barrier
-  Type C Monodirectional reflector
-  Vertical panel with steady burn monodirectional light
-  Impact attenuator



SECTION A-A



- (a) Reflectorized temporary pavement marking tape shall be placed throughout the taper and along side the work area. The edge line shall be white for right lane closure.
- (b) Vertical panels at 25' centers with steady burning monodirectional lights.

PLAN

Work this sheet with Traffic Control Standards 701400 & 701402







REVISIONS	
NAME	DATE

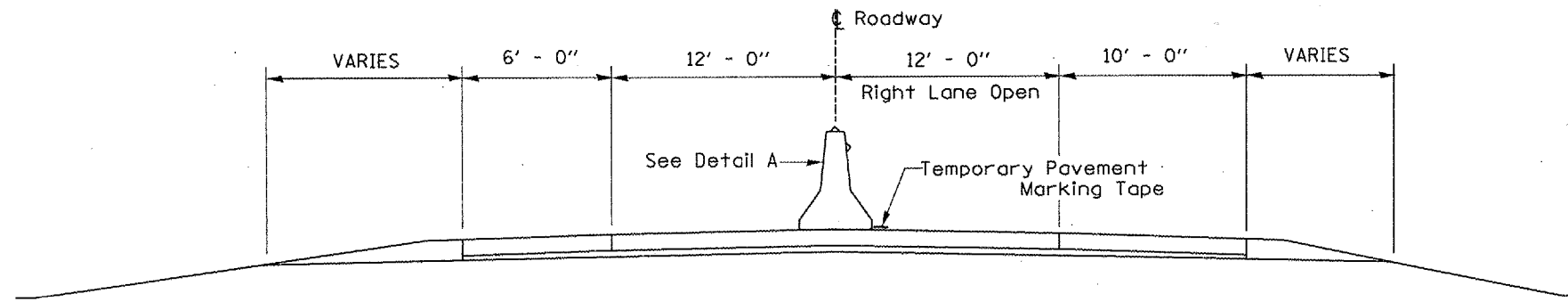
ILLINOIS DEPARTMENT OF TRANSPORTATION
TRAFFIC CONTROL DETAILS
RIGHT LANE CLOSURE
 SCALE: VERT. _____
 SCALE: HORIZ. _____
 DATE 01/19/06
 DRAWN BY RW
 CHECKED BY _____

Date: 01/19/06
File: c:\projects\bridgepaint06\2006-1\details.dgn

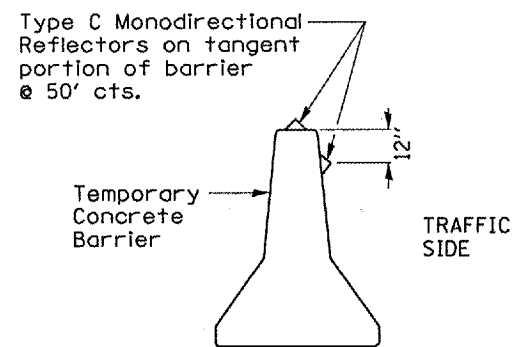
F.A.I. RTE.	SECTION	COUNTY	TOTAL SHEETS	SHEET NO.
55	D-3 BRIDGE PAINTING 2006-1	LIVINGSTON & GRUNDY	12	6
ILLINOIS			STATE AID PROJECT	

LENGEND

-  Work Zone
-  Type II barricade, drum or vertical barricade with steady burn monodirectional light
-  Temporary concrete barrier
-  Type C Monodirectional reflector
-  Vertical panel with steady burn monodirectional light
-  Impact attenuator

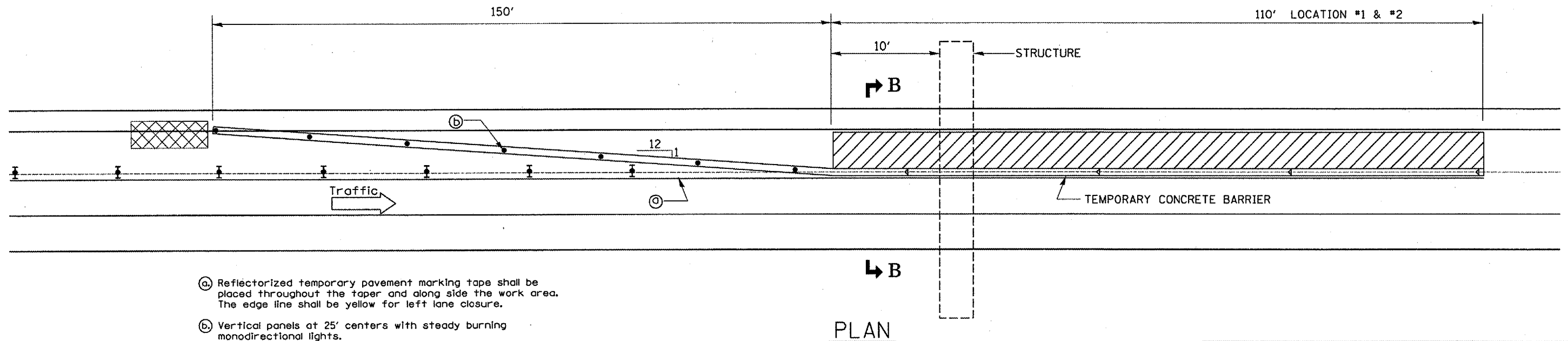


SECTION B-B



DETAIL A

Note: Color of reflectors shall match the color of the adjacent temporary pavement striping.



- Ⓐ ReflectORIZED temporary pavement marking tape shall be placed throughout the taper and along side the work area. The edge line shall be yellow for left lane closure.
- Ⓑ Vertical panels at 25' centers with steady burning monodirectional lights.

PLAN

Work this sheet with Traffic Control Standards 701400 & 701402

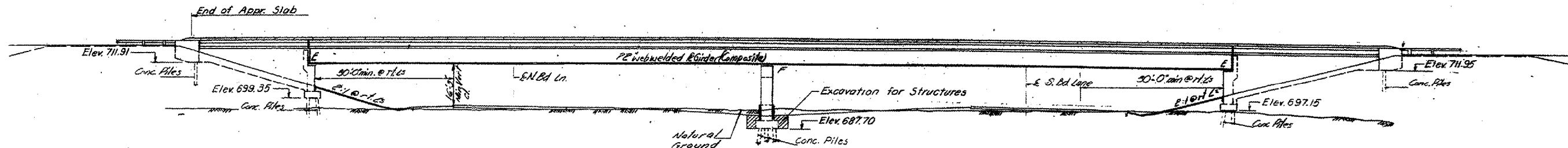
REVISIONS		ILLINOIS DEPARTMENT OF TRANSPORTATION
NAME	DATE	
		TRAFFIC CONTROL DETAILS LEFT LANE CLOSURE

SCALE: VERT. _____
HORIZ. _____
DATE 01/19/06

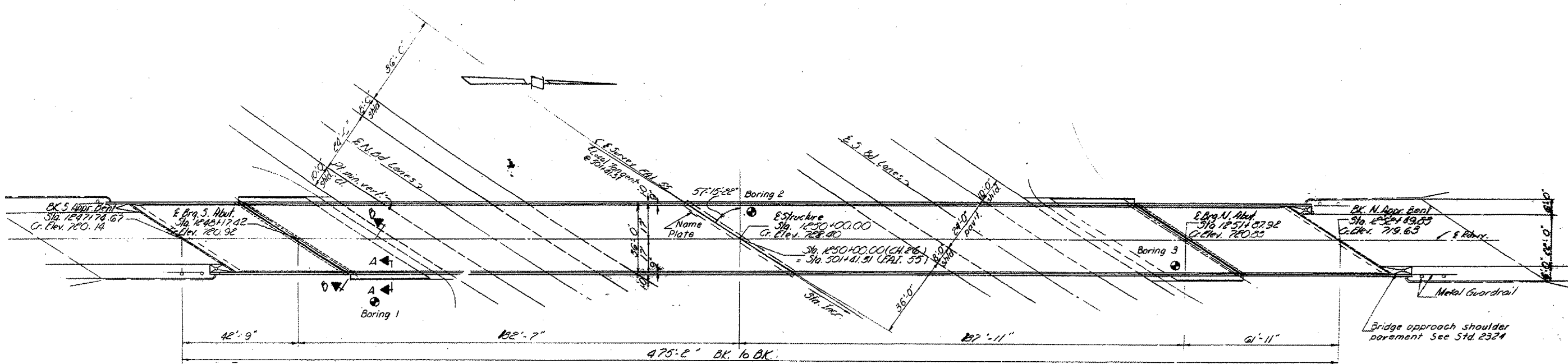
DRAWN BY RW
CHECKED BY _____

Date: 01/19/06
File: c:/projects/bridgepaint06/2006-1/details.dgn

F.A.I. RTE.	SECTION	COUNTY	TOTAL SHEETS	SHEET NO.
55	D-3 BRIDGE PAINTING 2006-1	LIVINGSTON & GRUNDY	12	7
ILLINOIS			STATE AID PROJECT	



ELEVATION



PLAN

GENERAL PLAN & ELEVATION

CH. 26 OVER FAI. RT. 55

LIVINGSTON COUNTY
STATION 3011+41.31 FAI. RT. 55

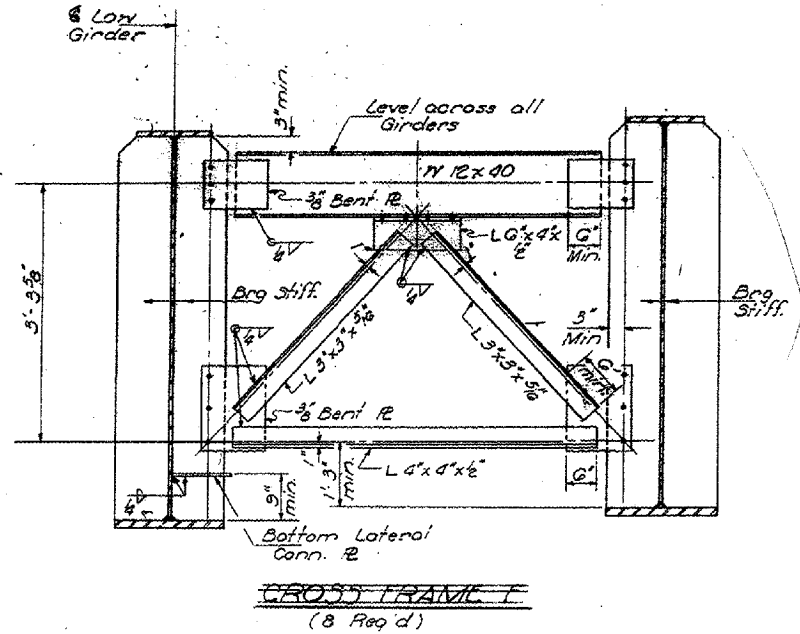
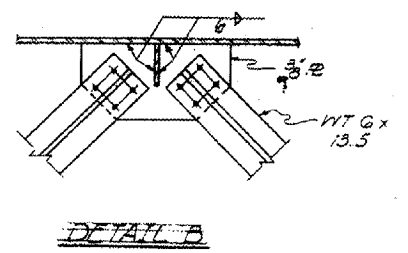
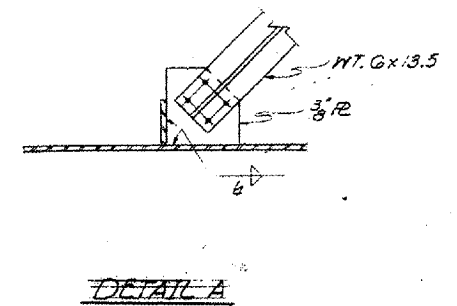
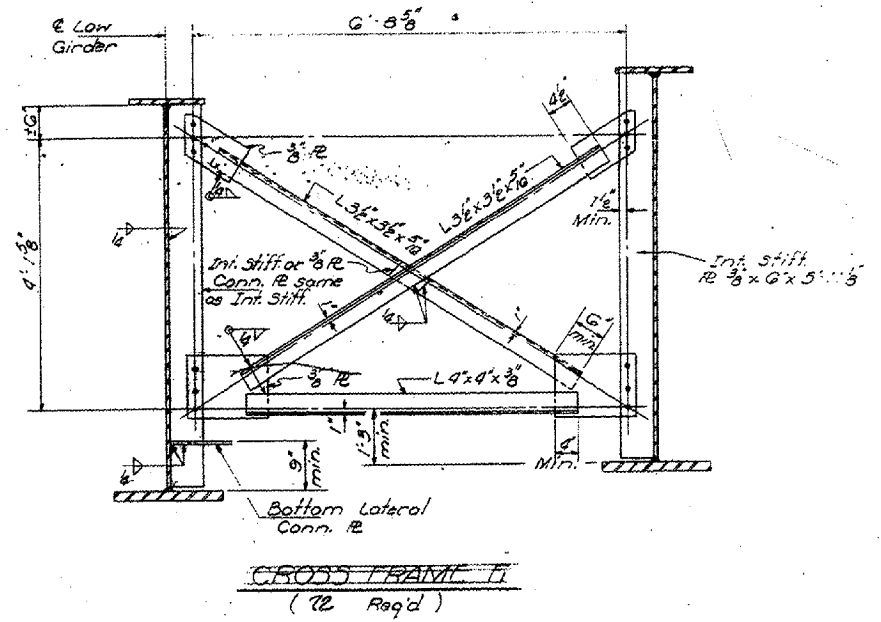
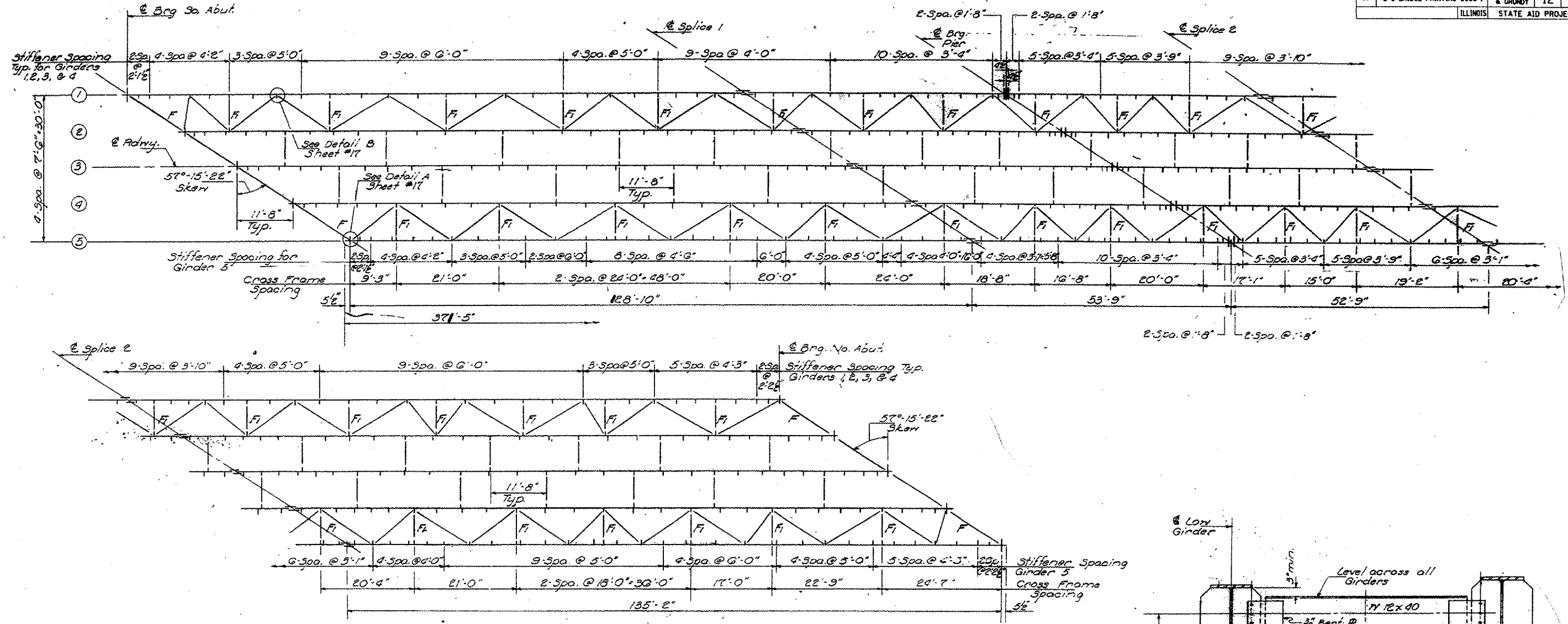
REVISIONS	
NAME	DATE

ILLINOIS DEPARTMENT OF TRANSPORTATION
**EXISTING STRUCTURE PLANS
FOR INFORMATION ONLY**
BRIDGE NO. 1
S.N. 053-0119

SCALE: VERT. DRAWN BY RW
 HORIZ. CHECKED BY
DATE 01/19/06

Date: 01/19/06
File: c:\projects\brf\gepain\06\2006-1\details.dgn

F.A.I. RTE.	SECTION	COUNTY	TOTAL SHEETS	SHEET NO.
55	D-3 BRIDGE PAINTING 2006-1	LIVINGSTON & GRUNDY	12	8
ILLINOIS			STATE AID PROJECT	



REVISIONS	
NAME	DATE

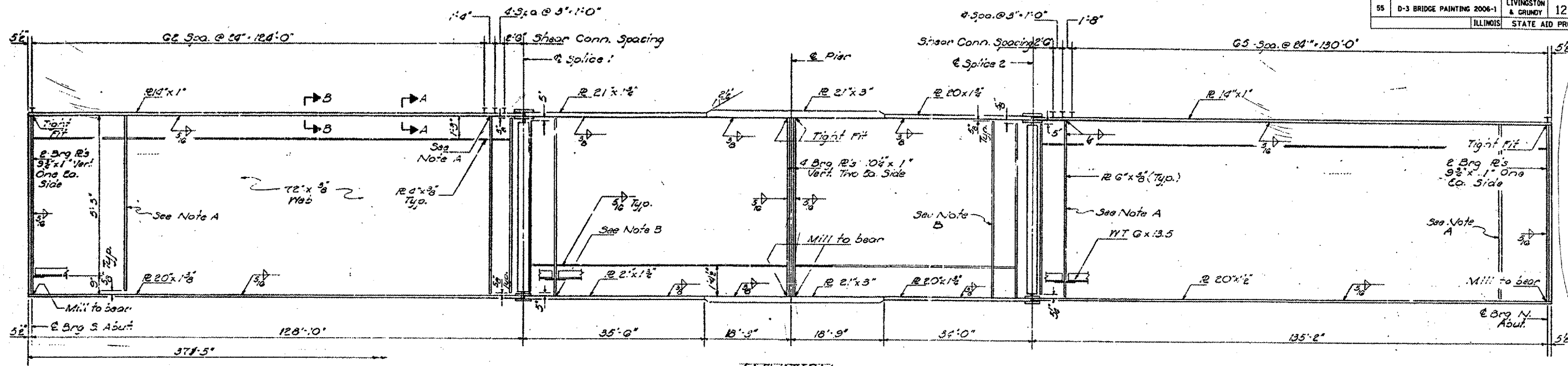
ILLINOIS DEPARTMENT OF TRANSPORTATION
**EXISTING STRUCTURE PLANS
 FOR INFORMATION ONLY**
BRIDGE NO. 1
S.N. 053-0119

SCALE: VERT. _____
 HORIZ. _____
 DATE 01/19/06

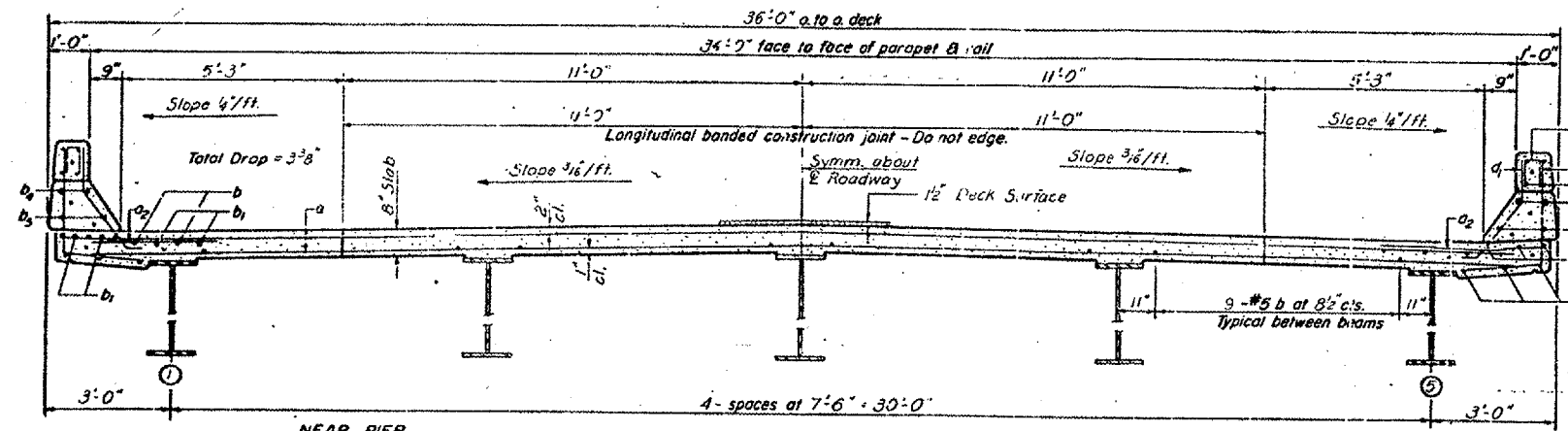
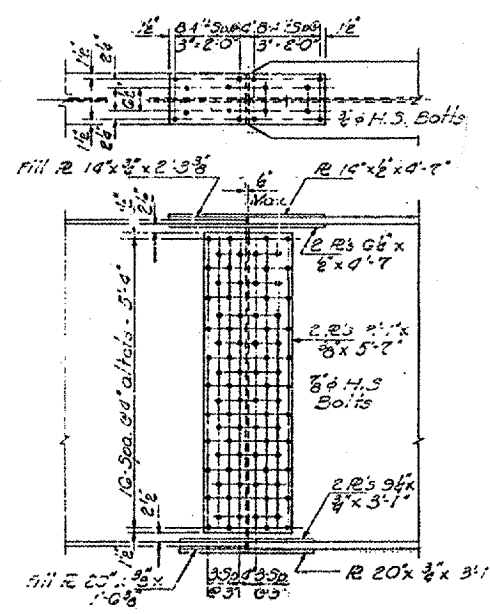
DRAWN BY RW
 CHECKED BY _____

Date: 01/19/06
 File: c:\projects\bridgepaint06\2006-1\details.dgn

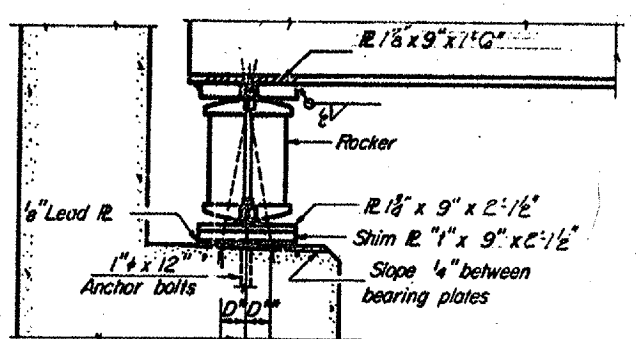
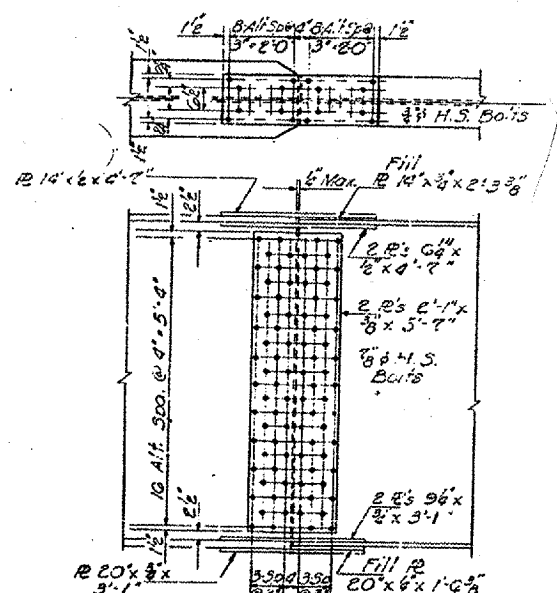
F.A.I. RTE.	SECTION	COUNTY	TOTAL SHEET NO.
55	D-3 BRIDGE PAINTING 2006-1	LIVINGSTON & GRUNDY	12 9
ILLINOIS STATE AID PROJECT			



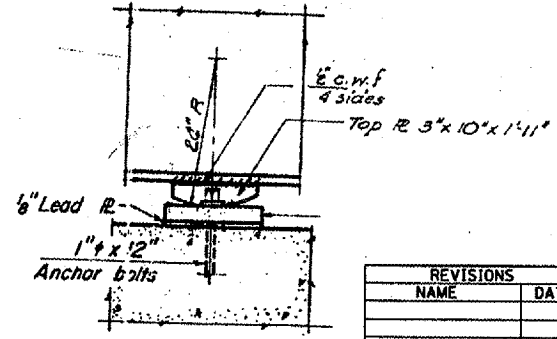
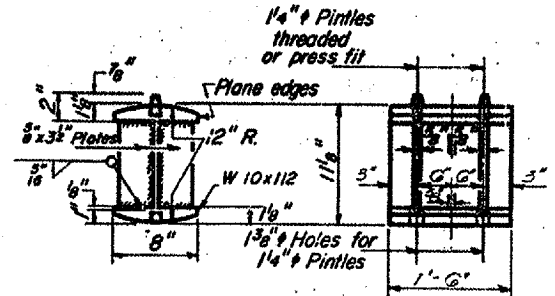
ELEVATION



CROSS SECTION (LOOKING NORTH)



ROCKER

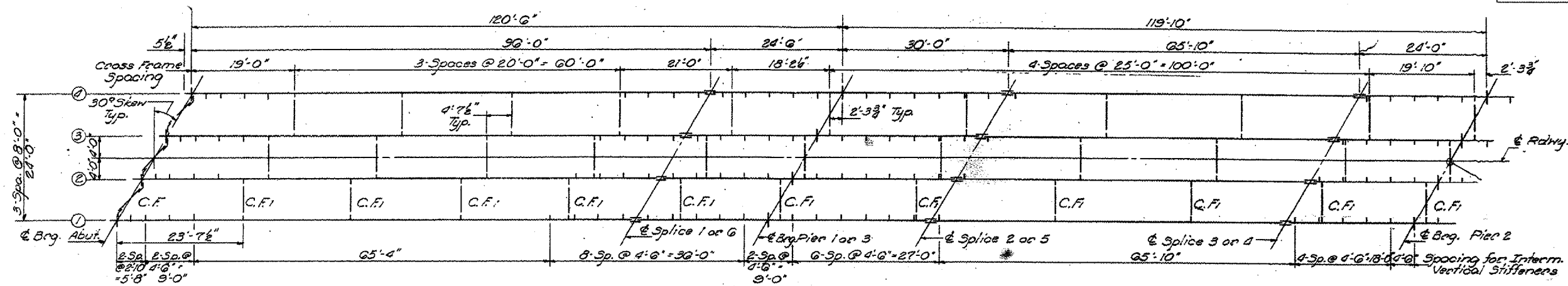


REVISIONS	
NAME	DATE

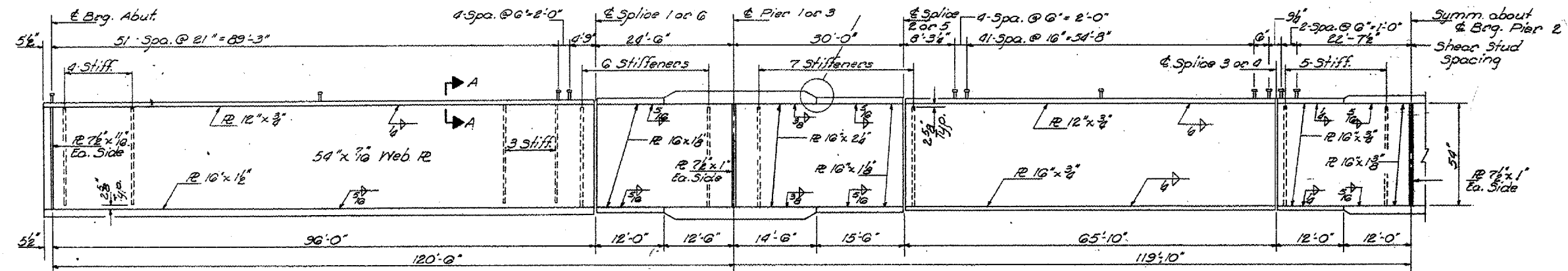
ILLINOIS DEPARTMENT OF TRANSPORTATION
**EXISTING STRUCTURE PLANS
 FOR INFORMATION ONLY**
BRIDGE NO. 1
S.N. 053-0119
 SCALE: VERT. _____
 HORIZ. _____
 DATE 01/19/06
 DRAWN BY RW
 CHECKED BY _____

Date: 01/19/06
 File: c:\projects\bridgepaint06\2006-1\details.dgn

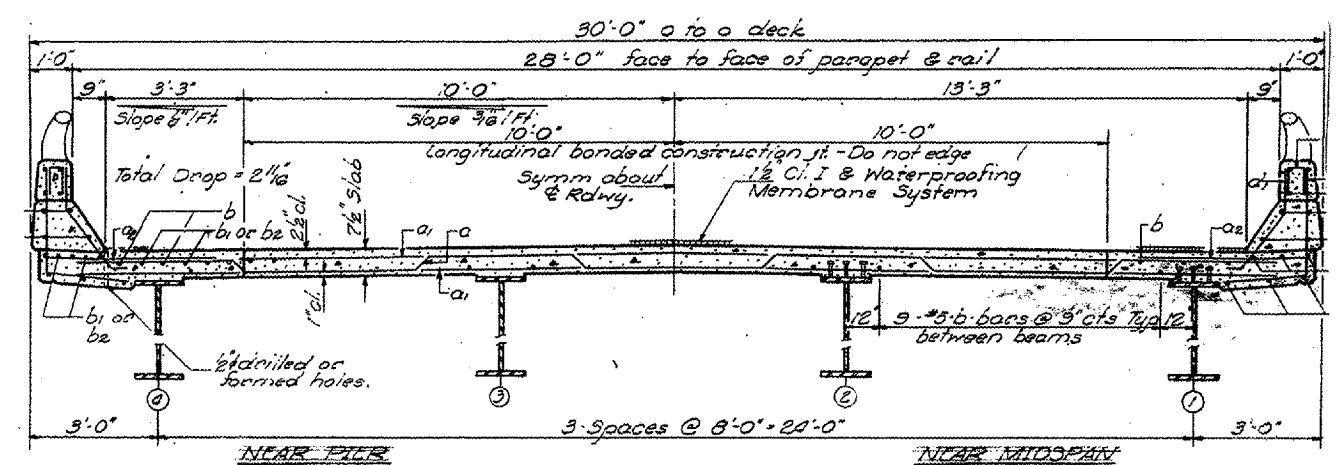
F.A.I. RTE.	SECTION	COUNTY	TOTAL SHEETS	SHEET NO.
55	D-3 BRIDGE PAINTING 2006-1	LIVINGSTON & GRUNDY	12	11
ILLINOIS			STATE AID PROJECT	



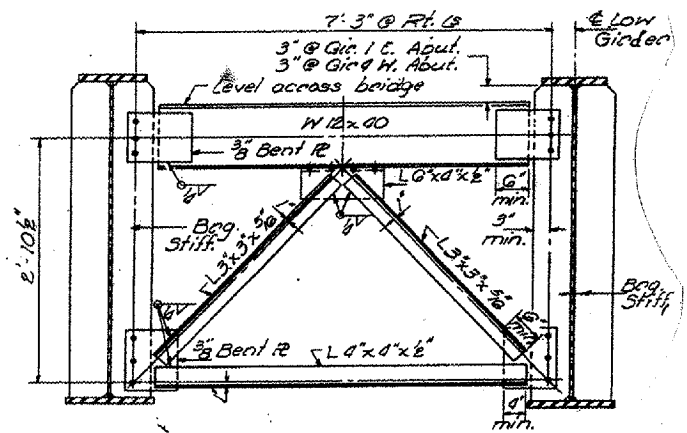
FRAMING PLAN



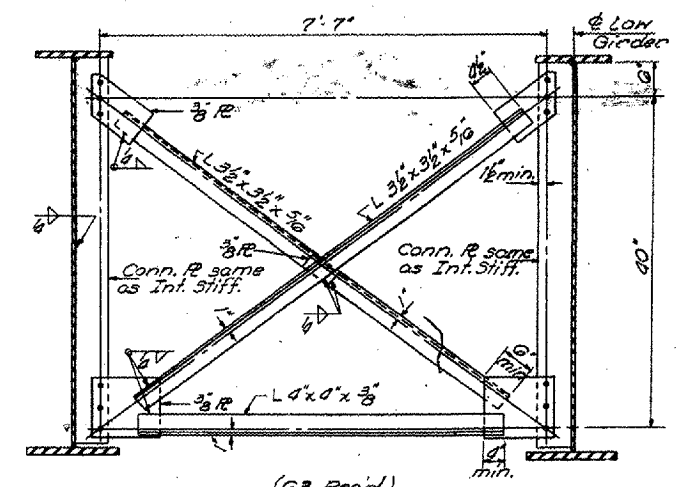
ELEVATION



CROSS SECTION
(Looking West)



CROSS FRAMES C.F.
(6 Req'd)



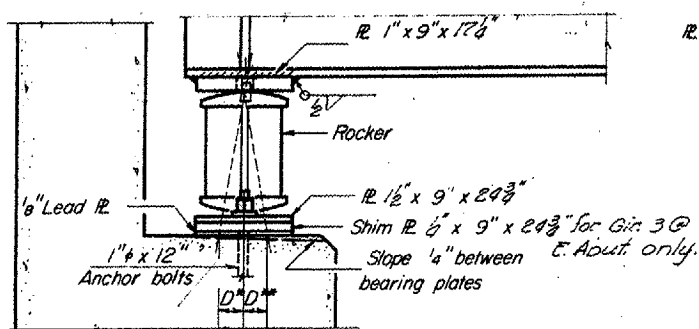
CROSS FRAMES C.F.
(63 Req'd)

REVISIONS	
NAME	DATE

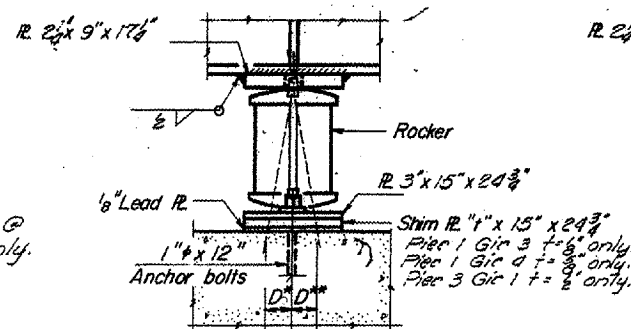
ILLINOIS DEPARTMENT OF TRANSPORTATION
**EXISTING STRUCTURE PLANS
 FOR INFORMATION ONLY**
BRIDGE NO. 2
S.N. 032-0078
 SCALE: VERT. _____
 HORIZ. _____
 DATE 01/19/06
 DRAWN BY RW
 CHECKED BY _____

Date: 01/19/06
 File: c:/projects/bridgepaint06/2006-1/details.dgn

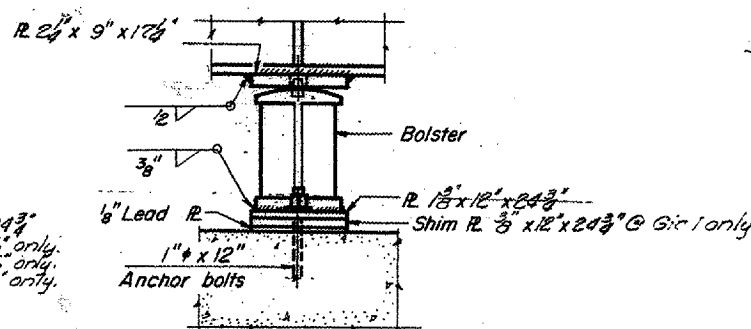
F.A.I. RFE.	SECTION	COUNTY	TOTAL SHEETS	SHEET NO.
55	D-3 BRIDGE PAINTING 2006-1	LIVINGSTON & GRUNDY	12	12
ILLINOIS			STATE AID PROJECT	



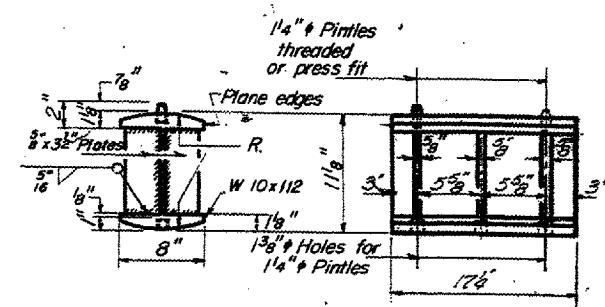
SECTION



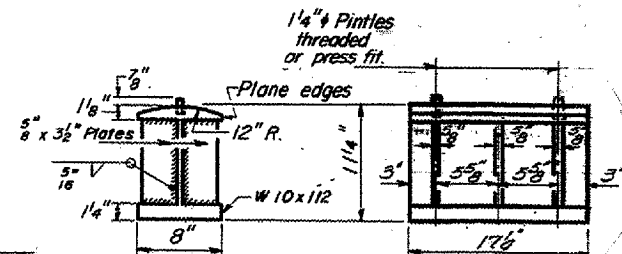
ELEVATION



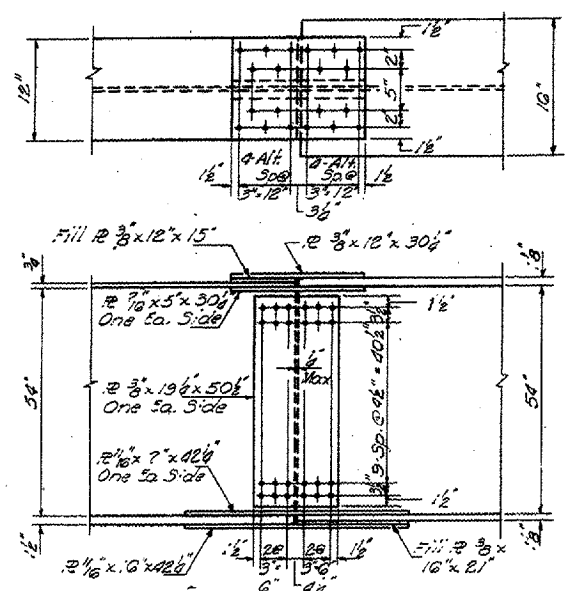
ELEVATION



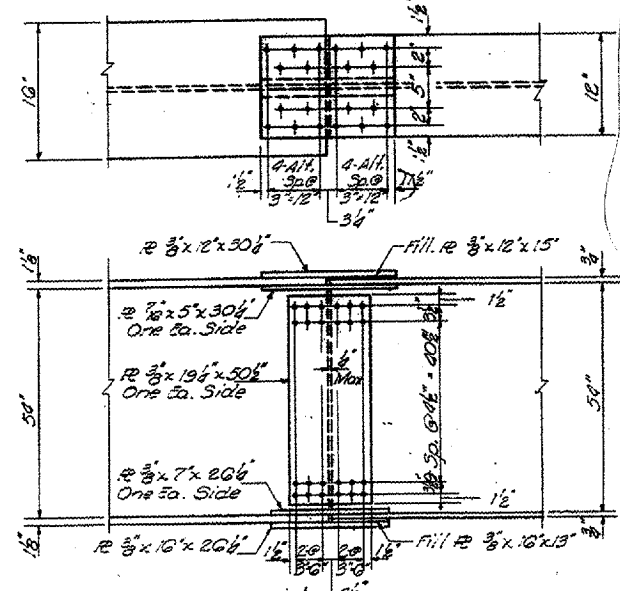
ROCKER
R=12" @ Piers 1 & 3
R=11" @ Abutments



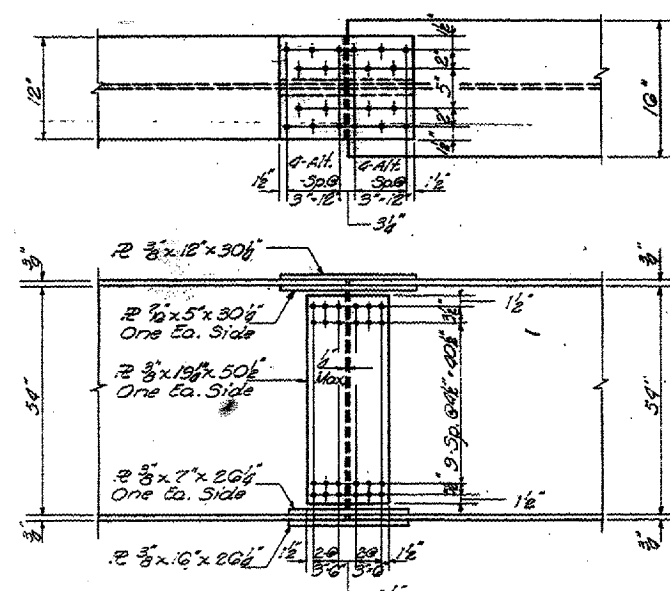
BOLSTER



SPLICE 1 & 2



SPLICE 4 & 5



SPLICE 3 & 4

REVISIONS	
NAME	DATE

ILLINOIS DEPARTMENT OF TRANSPORTATION
EXISTING STRUCTURE PLANS
FOR INFORMATION ONLY
BRIDGE NO. 2
S.N. 032-0078
 SCALE: VERT. DATE 01/19/06
 DRAWN BY RW
 CHECKED BY

Date: 01/19/06
 File: c:\projects\brldgepaint06\2006-1\details.dgn