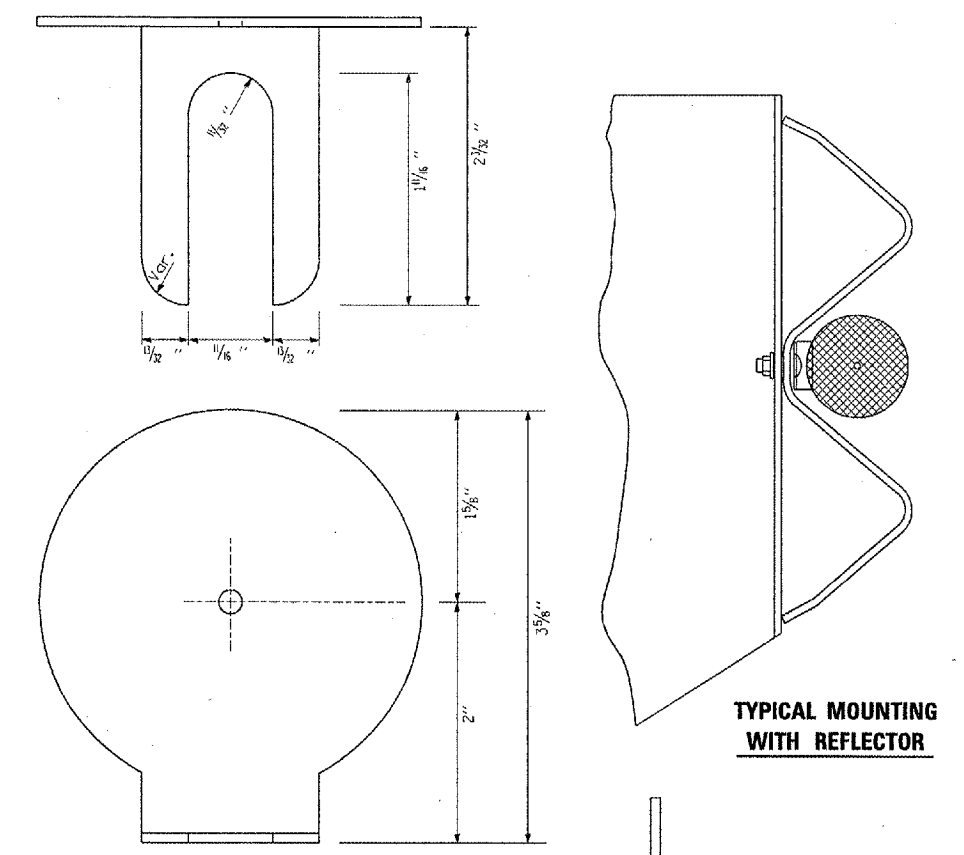


\* The width and height (a, b) of the terminal marker shall be within approximately 25 mm (1 inch) of the outer edge of the terminal end, with a minimum reflective area of 0.18 m<sup>2</sup> (288 sq. in.)

**TERMINAL MARKER DETAILS**  
Color: Black / Yellow reflectorized

**REFLECTOR AND TERMINAL MARKER PLACEMENT**



- NOTES:**
- BRACKET IS TO BE FABRICATED FROM 12 GA. (MIN) STEEL GALVANIZED IN ACCORDANCE WITH AASHTO M III.
  - MIN. 3 REFLECTORS PER SIDE.
  - BRACKET "FOOT" SHALL BE PLACED BETWEEN THE BOLT HEAD AND THE PLATE WASHER (IF PRESENT).
  - BRACKETS SHALL NOT BE PLACED WITHIN 25 FT OF THE END OF A BREAKAWAY CABLE TERMINAL (BCT) SECTION OR WITHIN AN EXPANSION SPLICE
  - ON THRIE BEAM RAIL, THE BRACKETS SHALL BE ATTACHED TO THE UPPER SPLICE BOLTS.
  - USE CRYSTAL COLOR, BI-DIRECTIONAL REFLECTORS USE AMBER (LEFT) AND CRYSTAL (RIGHT), MONODIRECTIONAL REFLECTORS ON INTERSTATES
  - ALL DIMENSIONS SHOWN ARE MINIMUM

**REFLECTOR DETAIL**

REVISIONS	
NAME	DATE

ILLINOIS DEPARTMENT OF TRANSPORTATION

**DETAILS**

2/14/2006 C:\p\p\l\sect\std\00606\det\al1.s.dgn