

F.A. RTE.	SECTION	COUNTY	TOTAL SHEETS	SHEET NO.
VARIOUS	*	VARIOUS	15	1

D-3 HIGHWAY DAMAGE REPAIR 2006

STATE OF ILLINOIS
DEPARTMENT OF TRANSPORTATION
DIVISION OF HIGHWAYS

**PROPOSED
HIGHWAY PLANS**

**VARIOUS ROUTES
D-3 HIGHWAY DAMAGE REPAIR 2006
VARIOUS COUNTIES**

INDEX OF SHEETS

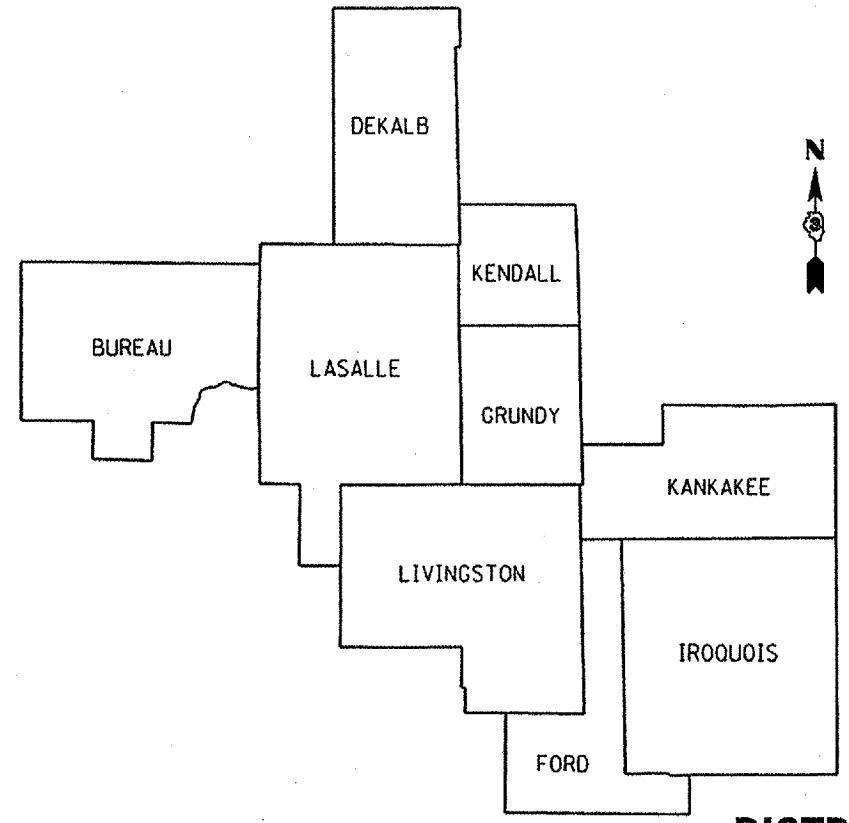
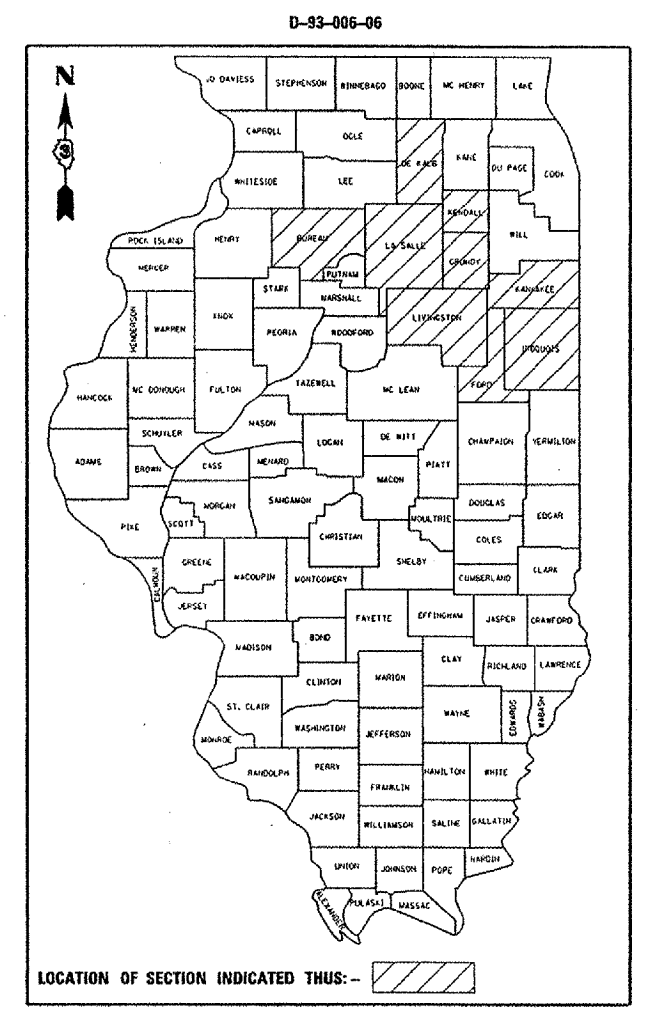
- 1 COVER SHEET
- 2 STANDARDS AND GENERAL NOTES
- 3-5 SUMMARY OF QUANTITIES
- 6 REFLECTOR AND TERMINAL MARKER PLACEMENT DETAIL
- 7 IMPACT ATTENUATOR INSTALLATION DETAIL
- 8 IMPACT ATTENUATOR (NON-REDIRECTIVE) DETAIL
- 9-10 TRAFFIC BARRIER TERMINAL, TYPE 1
- 11-13 TRAFFIC BARRIER TERMINAL, TYPE 3 & 3A
- 14-15 TRAFFIC BARRIER TERMINAL, TYPE 4

HIGHWAY STANDARDS

SEE PAGE 2 FOR LIST OF HIGHWAY STANDARDS

C - 93 - 045 - 06

REPAIRING MOTORIST CAUSED DAMAGE TO HIGHWAY FACILITIES



LOCATION MAP
NOT TO SCALE

MICROFILMED _____
REEL NUMBER _____
AWARDED _____
RESIDENT ENGINEER _____
AS BUILT CHANGES WERE MADE
ON THE FOLLOWING SHEETS _____

J.U.L.I.E.
JOINT UTILITY LOCATION INFORMATION FOR EXCAVATION
1-800-892-0123

DISTRICT 3 NO. (815) 434-6131
SAFETY AND CLAIMS MANAGER: KRIS FOGARTY
PLANS ENGINEER: MARK JONES

STATE OF ILLINOIS
DEPARTMENT OF TRANSPORTATION
DIVISION OF HIGHWAYS

SUBMITTED FEB 14 20 06

[Signature]
DEPUTY DIRECTOR OF HIGHWAYS, REGION ENGINEER

March 24, 20 06
[Signature]
ENGINEER OF DESIGN AND ENVIRONMENT

March 24, 20 06
[Signature]
DIRECTOR OF HIGHWAYS, CHIEF ENGINEER

PRINTED BY THE AUTHORITY
OF THE STATE OF ILLINOIS

ED00606\DETAILS.DGN

P. A. NO.	SECTION	COUNTY	TOTAL SHEETS	SHEET NO.
VAR.	*	VAR.	15	2
STA.	TO STA.			
FED. ROAD DIST. NO.	ILLINOIS	FED. AID PROJECT		

D-3 HIGHWAY DAMAGE REPAIR 2006
CONTRACT #66636

HIGHWAY STANDARDS

- 509001 TUBULAR THRIE BEAM RETROFIT RAIL FOR BRIDGES
- 606001-02 CONCRETE CURB TYPE B AND COMBINATION CONCRETE CURB AND GUTTER
- 630001-06 STEEL PLATE BEAM GUARDRAIL
- 630101-06 GUARDRAIL MOUNTED ON EXISTING CULVERTS
- 630301-03 SHOULDER WIDENING FOR TYPE 1 (SPECIAL) GUARDRAIL TERMINALS
- 631011-02 TRAFFIC BARRIER TERMINAL, TYPE 2
- 631026-02 TRAFFIC BARRIER TERMINAL, TYPE 5 & 5A
- 631031-05 TRAFFIC BARRIER TERMINAL, TYPE 6
- 631032-02 TRAFFIC BARRIER TERMINAL, TYPE 6A
- 631033-01 TRAFFIC BARRIER TERMINAL, TYPE 6B
- 631036-04 TRAFFIC BARRIER TERMINAL, TYPE 8
- 631041-01 TRAFFIC BARRIER TERMINAL, TYPE 9
- 631046-02 TRAFFIC BARRIER TERMINAL, TYPE 10
- 631056-01 TRAFFIC BARRIER TERMINAL, TYPE 12
- 635001 DELINEATORS
- 635006-02 REFLECTOR AND TERMINAL MARKER PLACEMENT
- 664001-01 CHAIN LINK FENCE
- 665001-01 WOVEN WIRE FENCE
- 701001-01 OFF-ROAD OPERATIONS 2L, 2W, MORE THAN 4.5 m (15') AWAY
- 701006-02 OFF-ROAD OPERATIONS 2L, 2W, 4.5 m (15') TO 600 mm (24") FROM PAVEMENT EDGE
- 701101-01 OFF-ROAD OPERATIONS MULTILANE, 4.5 m (15') TO 600 mm (24") FROM PAVEMENT EDGE
- 701106-01 OFF-ROAD OPERATIONS, MULTILANE, MORE THAN 4.5 m (15') AWAY
- 701201-02 LANE CLOSURE, 2L, 2W, DAY ONLY, FOR SPEEDS ≥ 45 MPH
- 701301-02 LANE CLOSURE, 2L, 2W, SHORT TIME OPERATIONS
- 701400-02 APPROACH TO LANE CLOSURE, FREEWAY/EXPRESSWAY
- 701406-04 LANE CLOSURE, FREEWAY/EXPRESSWAY, DAY OPERATIONS ONLY
- 701411-03 LANE CLOSURE, MULTILANE, AT ENTRANCE OR EXIT RAMP FOR SPEEDS ≥ 45 MPH
- 701421-01 LANE CLOSURE, MULTILANE, DAY OPERATIONS ONLY, FOR SPEEDS ≥ 45 MPH TO 55 MPH
- 701426-02 LANE CLOSURE, MULTILANE INTERMITTENT OR MOVING OPERATION, FOR SPEEDS ≥ 45 MPH
- 701501-03 URBAN LANE CLOSURE, 2L, 2W, UNDIVIDED
- 701502-01 URBAN LANE CLOSURE 2L, 2W, WITH BIDIRECTIONAL LEFT TURN LANE
- 701601-04 URBAN LANE CLOSURE, MULTILANE, 1W OR 2W WITH NONTRAVERSABLE MEDIAN
- 701602-02 URBAN LANE CLOSURE, MULTILANE, 2W WITH BIDIRECTIONAL LEFT TURN LANE
- 701606-04 URBAN LANE CLOSURE, MULTILANE, 2W WITH MOUNTABLE MEDIAN
- 701701-04 URBAN LANE CLOSURE, MULTILANE INTERSECTION
- 701801-03 LANE CLOSURE, MULTILANE 1W OR 2W CROSSWALK OR SIDEWALK CLOSURE
- 702001-06 TRAFFIC CONTROL DEVICES

GENERAL NOTES

THE CONTRACTOR IS REMINDED TO CAREFULLY EXAMINE THIS CONTRACT FOR NEW OR CHANGED CONDITIONS FROM ANY PREVIOUS VERSION HE MAY HAVE EXAMINED.

THE REMOVAL OF DAMAGED GUARDRAIL AND DAMAGED POSTS SHALL NOT BE PAID FOR SEPARATELY BUT SHALL BE CONSIDERED INCLUDED IN THE COST OF THE VARIOUS REPLACEMENT PAY ITEMS.

THE TRAFFIC CONTROL REQUIRED FOR THE REPAIRS OR INSTALLATION OF GUARDRAIL OR FENCE SHALL BE CONSIDERED INCIDENTAL TO THE VARIOUS PAY ITEMS OF WORK, AND SHALL BE IN ACCORDANCE WITH THE TRAFFIC CONTROL STANDARDS INCLUDED HEREIN.

ALL HARDWARE (NUTS, BOLTS, WASHERS, STAPLES, WIRES, TIES, ETC.) REQUIRED FOR THE REPAIRS TO OR INSTALLATION OF GUARDRAIL AND FENCE SHALL BE CONSIDERED INCIDENTAL TO THE VARIOUS PAY ITEMS OF WORK IN THIS CONTRACT.

THE CONTRACTOR SHALL BE RESPONSIBLE FOR PROTECTING UTILITY PROPERTY FROM CONSTRUCTION OPERATIONS AS OUTLINED IN ARTICLE 107.31 OF THE STANDARD SPECIFICATIONS. THE J.U.L.I.E. NUMBER IS 1-800-892-0123. A MINIMUM OF FORTY-EIGHT HOURS ADVANCE NOTICE IS REQUIRED.

ANY REFERENCE TO A STANDARD IN THESE PLANS SHALL BE INTERPRETED TO MEAN THE EDITION AS INDICATED BY THE SUBNUMBER LISTED ON THE INDEX OF SHEETS OR THE COPY OF THE STANDARD INCLUDED IN THESE PLANS.

STATE OF ILLINOIS
DEPARTMENT OF TRANSPORTATION
DISTRICT THREE

PREPARED BY: *Paul Powell*
DISTRICT STUDIES & PLANS ENGINEER

DATE: 2.14.06

EXAMINED BY: *Hubert J. [Signature]*
DISTRICT CONSTRUCTION ENGINEER

Kenneth R. [Signature]
DISTRICT MATERIALS ENGINEER

Bruce A. [Signature]
DISTRICT OPERATIONS ENGINEER

REVISIONS	
NAME	DATE

ILLINOIS DEPARTMENT OF TRANSPORTATION
GENERAL NOTES

2/14/2006 C:\p\proj\sect\ed00606\der\011s.dgn

SUMMARY OF QUANTITIES

F. A. SHEET	SECTION	COUNTY	TOTAL SHEETS	SHEET NO.
VAR.	*	VAR.	15	3
STA.		TO STA.		
FED. ROAD DIST. NO.		ALIGNMENT	FED. AID PROJECT	
* D-3 HIGHWAY DAMAGE REPAIR 2006 CONTRACT #66636				

CODE NO.	ITEM	CONSTRUCTION CODE TYPE:			100% MCHD	100% STATE
		UNIT	TOTAL QUANTITY	MCHD SFTY-3J	CONTR. MAIN. SFTY-3J	
60600605	CONCRETE CURB, TYPE B	FOOT	30	30		
63100045	TRAFFIC BARRIER TERMINAL, TYPE 2	EACH	2	2		
63100070	TRAFFIC BARRIER TERMINAL, TYPE 5	EACH	1	1		
63100085	TRAFFIC BARRIER TERMINAL, TYPE 6	EACH	1	1		
63100087	TRAFFIC BARRIER TERMINAL, TYPE 6A	EACH	1	1		
63100089	TRAFFIC BARRIER TERMINAL, TYPE 6B	EACH	1	1		
63100095	TRAFFIC BARRIER TERMINAL, TYPE 8	EACH	1	1		
63100101	TRAFFIC BARRIER TERMINAL, TYPE 9	EACH	1	1		
63100105	TRAFFIC BARRIER TERMINAL, TYPE 10	EACH	1	1		
63100115	TRAFFIC BARRIER TERMINAL, TYPE 12	EACH	1	1		
63100167	TRAFFIC BARRIER TERMINAL TYPE 1, SPECIAL (TANGENT)	EACH	45	40	5	
63100169	TRAFFIC BARRIER TERMINAL TYPE 1, SPECIAL (FLARED)	EACH	3	2	1	
63301000	REMOVE AND RE-ERECT STEEL PLATE BEAM GUARD RAIL	FOOT	50		50	
63400105	GUARD POSTS	EACH	100	50	50	
66400105	CHAIN LINK FENCE, 4'	FOOT	300	150	150	
66400305	CHAIN LINK FENCE, 6'	FOOT	350	200	150	
66500105	WOVEN WIRE FENCE, 4'	FOOT	9800	8550	1250	
67100100	MOBILIZATION	L SUM	1	0.5	0.5	
78200405	GUARDRAIL MARKERS	EACH	102	90	12	

* SFTY - 3N

REVISIONS	
NAME	DATE

ILLINOIS DEPARTMENT OF TRANSPORTATION

SUMMARY OF QUANTITIES

2/14/2006 c:\p\p\sect\sect\ed00506.dbr\l.s.dgn

SUMMARY OF QUANTITIES

F. A. NO.	SECTION	COUNTY	TOTAL SHEETS	SHEET NO.
VAR.	*	VAR.	15	4
STA.	TO STA.			
FED. ROAD DIST. NO.	ALPHAS	FED. AID PROJECT		

* D-3 HIGHWAY DAMAGE REPAIR 2006
CONTRACT #66636

CODE NO.	ITEM	CONSTRUCTION CODE TYPE:			100% MCHD	100% STATE
		UNIT	TOTAL QUANTITY	MCHD SFTY-3J	CONTR. MAIN. SFTY-3J	
X0300159	EMERGENCY WORK CALL OUT	EACH	115	90	25	
X0300160	PULL POST ARRANGEMENT	EACH	22	20	2	
X0300161	CONCRETE STRUCTURE REPAIR	CU FT	15	15		
X0321563	REPAIR TRAFFIC BARRIER TERMINAL TYPE 1 SPECIAL	EACH	35	25	10	
X0322878	TIMBER CURB	FOOT	64	32	32	
X0639500	CHAIN LINK FENCE POST	EACH	21	15	6	
X6610100	BITUMINOUS CURB REPAIR	FOOT	64	32	32	
Z0025550	FURNISHING AND INSTALLING RAIL ELEMENT PLATES	FOOT	7550	6550	1000	
Z0026260	FURNISHING AND INSTALLING TUBULAR THRIE BEAM	FOOT	150	100	50	
Z0026700	FURNISHING AND SETTING STEEL POSTS	EACH	600	500	100	
Z0026800	FURNISHING AND SETTING STEEL POSTS (MODIFIED)	EACH	5	5		
Z0026900	FURNISHING AND SETTING STEEL POSTS (SPECIAL)	EACH	50		50	
* Z0030030	IMPACT ATTENUATORS (FULLY REDIRECTIVE, NARROW), TEST LEVEL 3	EACH	3	2	1	
* Z0030390	IMPACT ATTENUATORS, REPLACEMENT (NON-REDIRECTIVE), TEST LEVEL 3	EACH	195	175	20	
Z0052400	REPAIR TRAFFIC BARRIER TERMINAL, TYPE 1	EACH	2	1	1	
Z0052600	REPAIR TRAFFIC BARRIER TERMINAL, TYPE 2	EACH	1	1		
Z0052800	REPAIR TRAFFIC BARRIER TERMINAL, TYPE 3A	EACH	1	1		
Z0052900	REPAIR TRAFFIC BARRIER TERMINAL, TYPE 4	EACH	2	2		
Z0053000	REPAIR TRAFFIC BARRIER TERMINAL, TYPE 5	EACH	1	1		

* SFTY - 3N

REVISIONS	
NAME	DATE

ILLINOIS DEPARTMENT OF TRANSPORTATION
SUMMARY OF QUANTITIES

2/14/2006 c:\p\proj\sect5\ed00506.dbr\l.s.dbr

SUMMARY OF QUANTITIES

F. A. SHEET	SECTION	COUNTY	TOTAL SHEETS	SHEET NO.
VAR.	*	VAR.	15	5
STA.	TO STA.			
FED. ROAD DIST. NO.	ILLINOIS	FED. AID PROJECT		
* D-3 HIGHWAY DAMAGE REPAIR 2006 CONTRACT #66636				

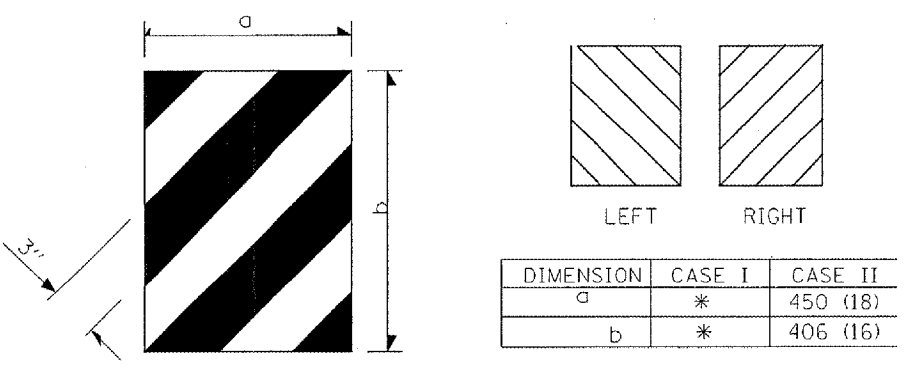
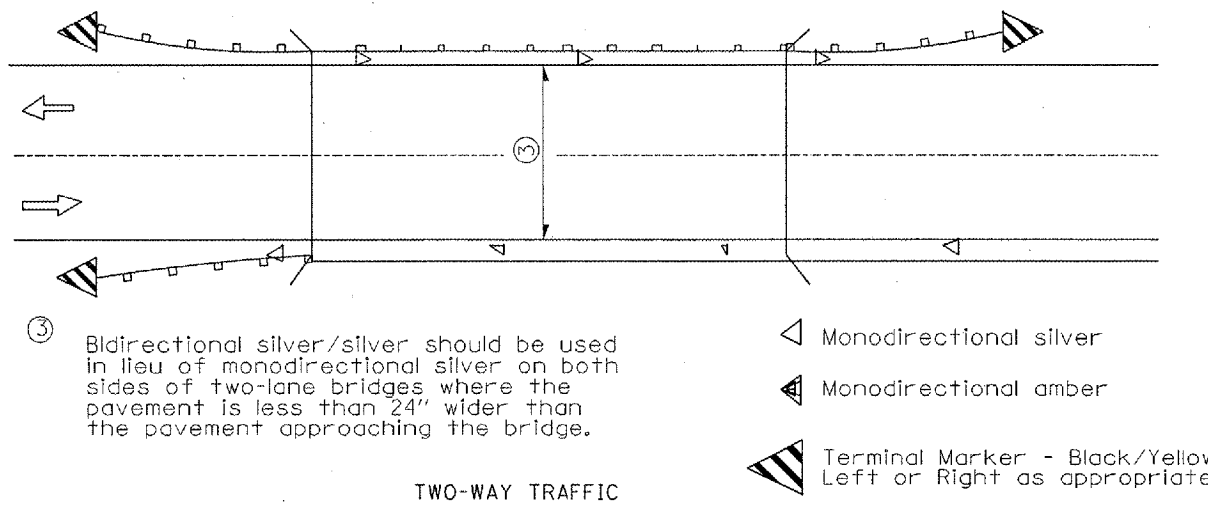
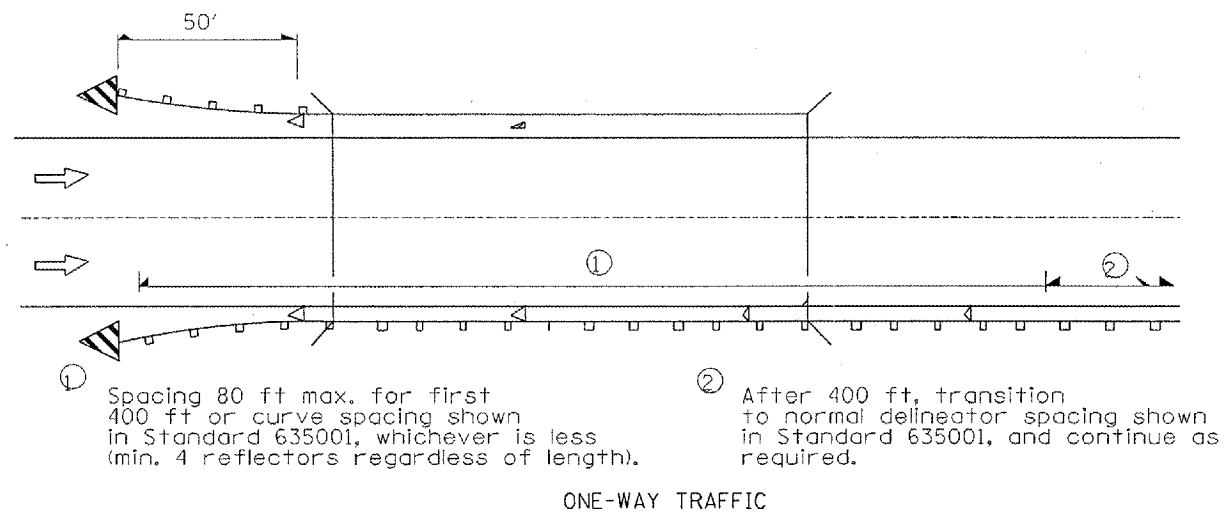
CODE NO.	ITEM	UNIT	TOTAL QUANTITY	CONSTRUCTION CODE TYPE:	
				100% MCHD SFTY-3J	100% STATE CONTR. MAIN. SFTY-3J
Z0053200	REPAIR TRAFFIC BARRIER TERMINAL, TYPE 6	EACH	2	2	
Z0053210	REPAIR TRAFFIC BARRIER TERMINAL, TYPE 6A	EACH	2	2	
Z0053220	REPAIR TRAFFIC BARRIER TERMINAL, TYPE 6B	EACH	2	2	
Z0053400	REPAIR TRAFFIC BARRIER TERMINAL, TYPE 8	EACH	1	1	
Z0053500	REPAIR TRAFFIC BARRIER TERMINAL, TYPE 9	EACH	1	1	
Z0053575	REPAIR TRAFFIC BARRIER TERMINAL, TYPE 12	EACH	1	1	
Z0026305	FURNISHING AND MAINTAINING AUTOMOTIVE VEHICLE	CAL MO	12	12	
* X0325264	REPAIR IMPACT ATTENUATORS (FULLY REDIRECTIVE, NARROW), TEST LEVEL 3	EACH	2	1	1
X0325256	REPAIR HIGH TENSION CABLE (BRIFEN)	FOOT	3000	2000	1000
X0325257	REPAIR HIGH TENSION CABLE (US HIGH TENSION CABLE SYSTEM)	FOOT	3000	2000	1000
X0325258	REPAIR HIGH TENSION CABLE SYSTEM END SECTION (BRIFEN)	EACH	20	15	5
X0325259	REPAIR HIGH TENSION CABLE SYSTEM END SECTION (US HIGH TENSION CABLE SYSTEM)	EACH	20	15	5
X0325260	REPAIR POSTS (BRIFEN)	EACH	100	60	40
X0325261	REPAIR POSTS (US HIGH TENSION CABLE SYSTEM)	EACH	100	60	40
X0325262	REMOVE AND REPLACE POSTS (BRIFEN)	EACH	100	60	40
X0325263	REMOVE AND REPLACE POSTS (US HIGH TENSION CABLE SYSTEM)	EACH	100	60	40

* SFTY - 3N

ILLINOIS DEPARTMENT OF TRANSPORTATION

SUMMARY OF QUANTITIES

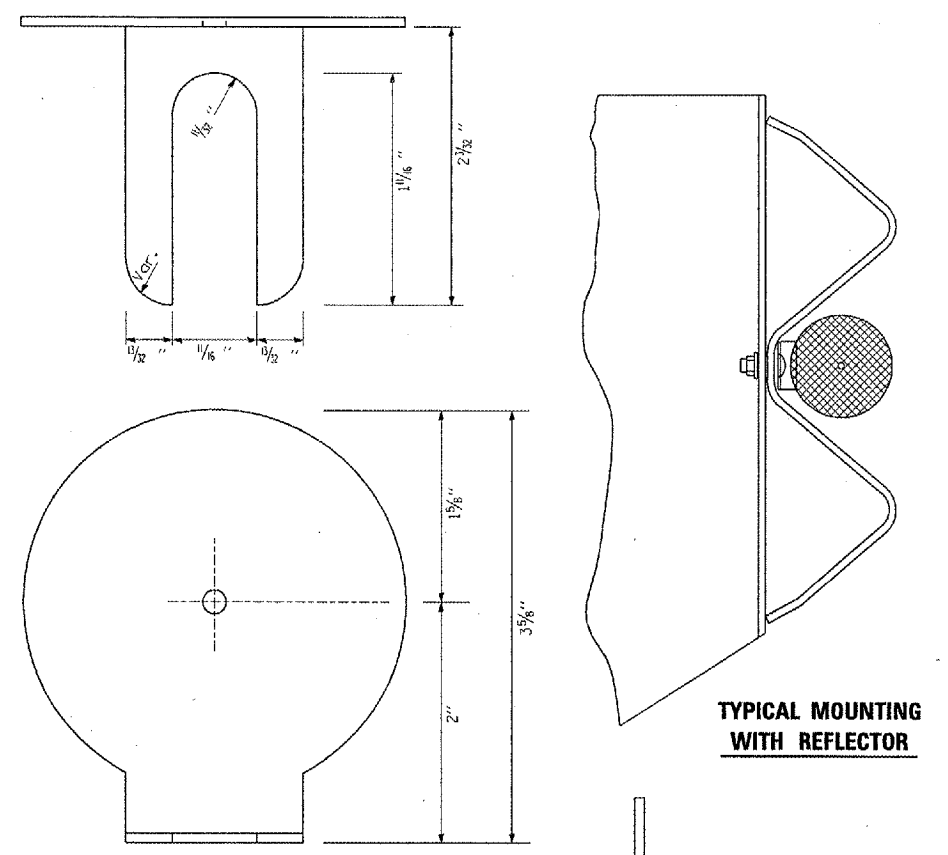
2/14/2006 c:\projects\00000606\00000606.dgn



* The width and height (a, b) of the terminal marker shall be within approximately 25 mm (1 inch) of the outer edge of the terminal end, with a minimum reflective area of 0.18 m² (288 sq. in.)

TERMINAL MARKER DETAILS
Color: Black / Yellow reflectorized

REFLECTOR AND TERMINAL MARKER PLACEMENT



- NOTES:**
- BRACKET IS TO BE FABRICATED FROM 12 GA. (MIN) STEEL GALVANIZED IN ACCORDANCE WITH AASHTO M III.
 - MIN. 3 REFLECTORS PER SIDE.
 - BRACKET "FOOT" SHALL BE PLACED BETWEEN THE BOLT HEAD AND THE PLATE WASHER (IF PRESENT).
 - BRACKETS SHALL NOT BE PLACED WITHIN 25 FT OF THE END OF A BREAKAWAY CABLE TERMINAL (BCT) SECTION OR WITHIN AN EXPANSION SPLICE
 - ON THRIE BEAM RAIL, THE BRACKETS SHALL BE ATTACHED TO THE UPPER SPLICE BOLTS.
 - USE CRYSTAL COLOR, BI-DIRECTIONAL REFLECTORS USE AMBER (LEFT) AND CRYSTAL (RIGHT), MONODIRECTIONAL REFLECTORS ON INTERSTATES
 - ALL DIMENSIONS SHOWN ARE MINIMUM

REFLECTOR DETAIL

REVISIONS	
NAME	DATE

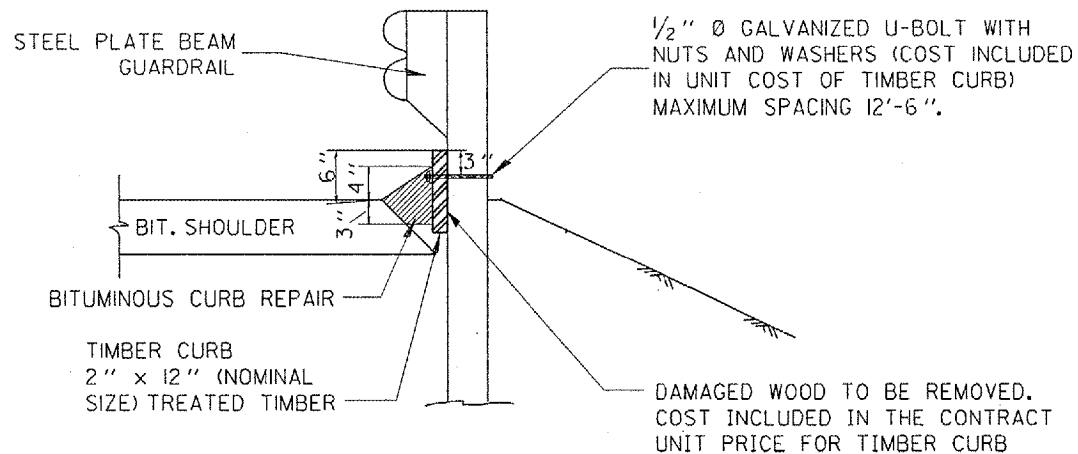
ILLINOIS DEPARTMENT OF TRANSPORTATION

DETAILS

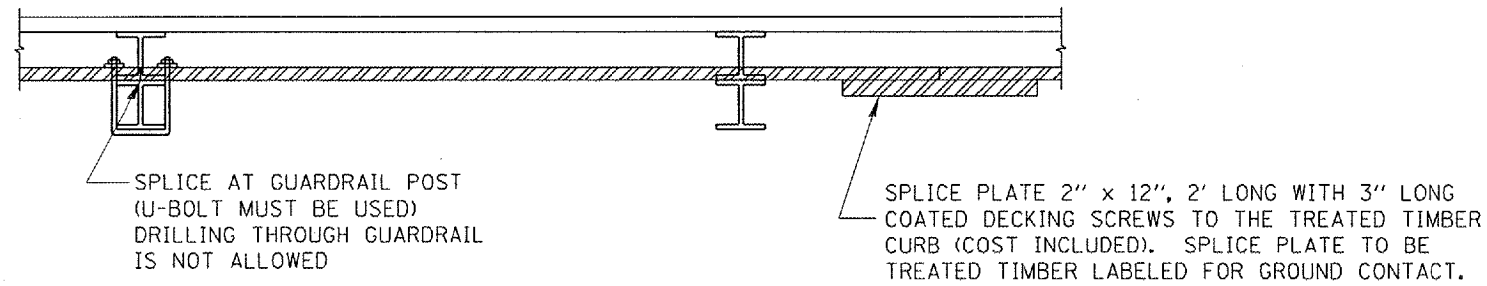
2/14/2006 C:\p\p\l\sect\std\00606\det\al1.s.dgn

F. & P. NO.	SECTION	COUNTY	TOTAL SHEETS	SHEET NO.
VAR.	•	VAR.	15	8
STA.	TO STA.			
FED. ROAD DIST. NO.	RLINES	FED. AID PROJECT		

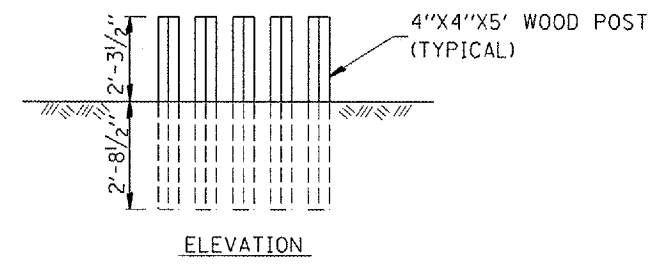
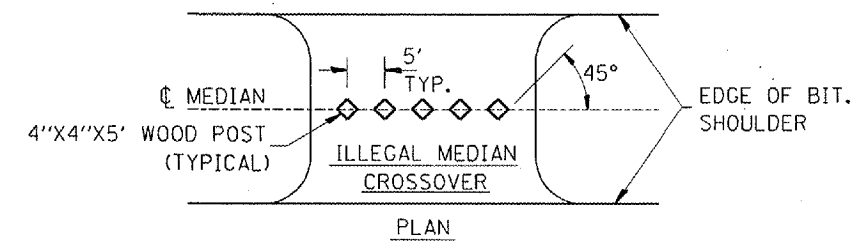
• D-3 HIGHWAY DAMAGE REPAIR 2005
CONTRACT #66636



SIDE VIEW



TOP VIEW



GUARD POST DETAIL

NOTE:
 THE TIMBER CURB SHALL BUTT TOGETHER AT THE GUARDRAIL POST OR SPLICED AS SHOWN ON THE DETAIL.
 THE TIMBER CURB SHALL BE COMMERCIALY AVAILABLE TREATED LUMBER, LABELED FOR GROUND CONTACT.
 THE PRICE FOR TIMBER CURB SHALL INCLUDE THE U-BOLTS ATTACHING THE TREATED TIMBER TO THE GUARDRAIL POSTS, TREATED TIMBER, AND REMOVING DAMAGED LUMBER.
 BITUMINOUS CURB REPAIR SHALL BE MEASURED AND PAID FOR AT THE CONTRACT UNIT PRICE PER FOOT.
 BITUMINOUS CURB REPAIR SHALL BE IN ACCORDANCE WITH SECTION 408 OF THE STANDARD SPECIFICATIONS.

TIMBER CURB & BITUMINOUS CURB REPAIR

REVISIONS	
NAME	DATE

ILLINOIS DEPARTMENT OF TRANSPORTATION

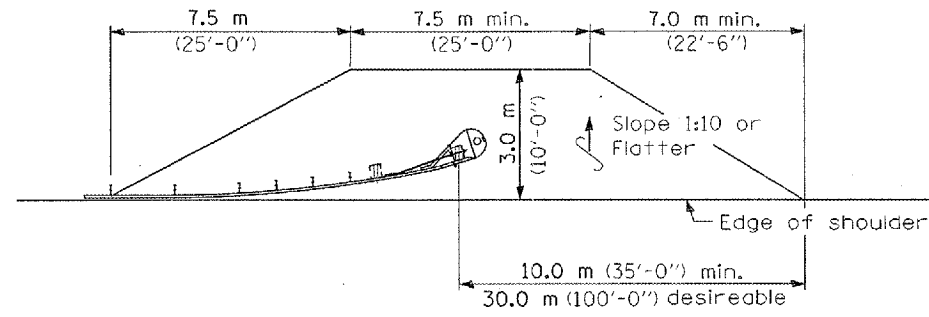
DETAILS

2/14/2006 c:\projects\ed00606\details.dgn

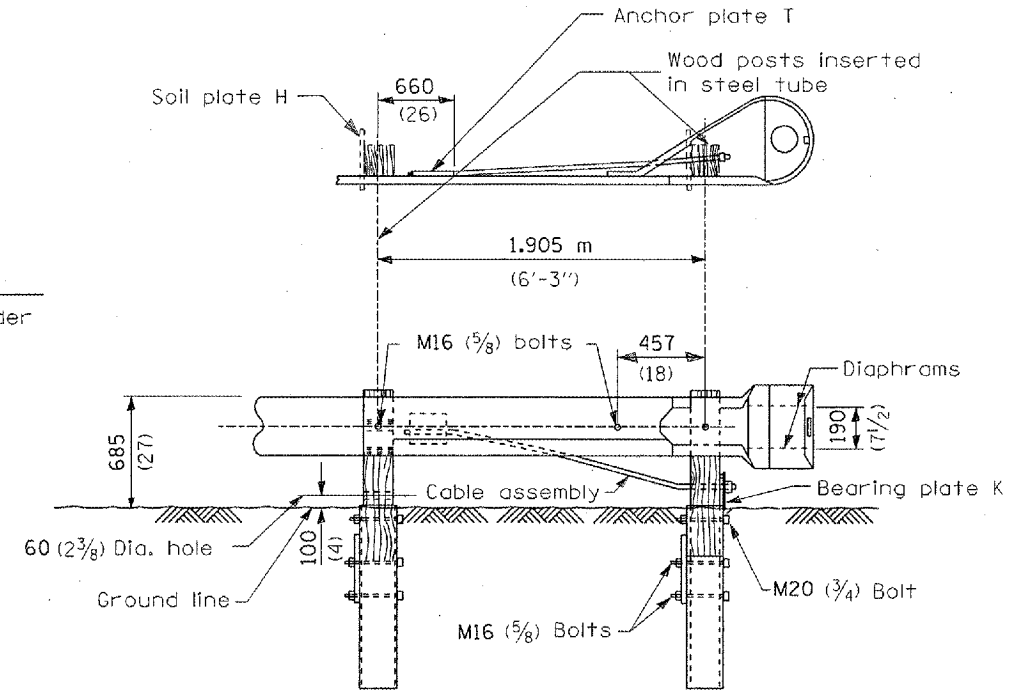
F. & A. RITE.	SECTION	COUNTY	TOTAL SHEETS	SHEET NO.
VAR.	•	VAR.	15	9
STA.	TO STA.			
FED. ROAD DIST. NO.	ILLINOIS	FED. AID PROJECT		

• D-3 HIGHWAY DAMAGE REPAIR 2005
CONTRACT #66636

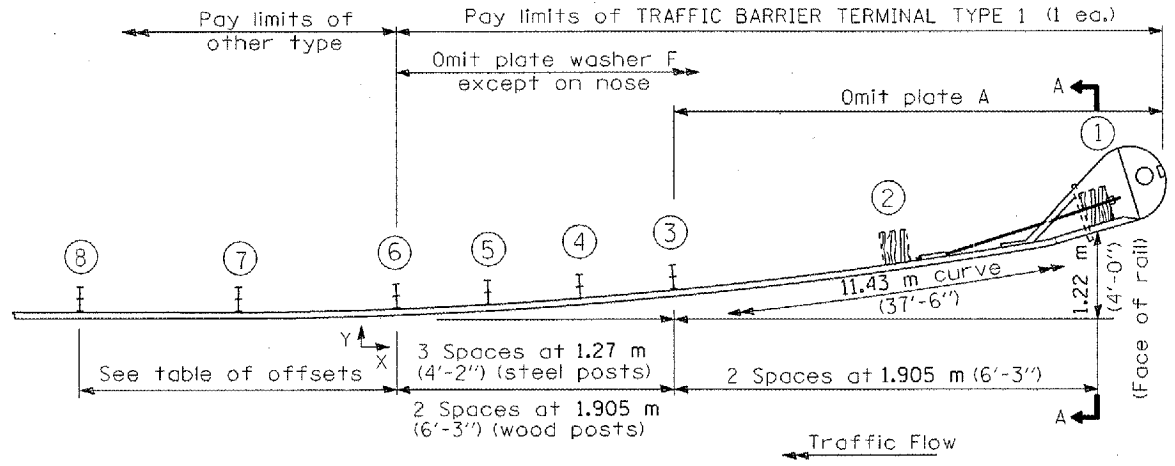
Post	X (m) (ft)	Y (m) (ft)
①	11.345 (37.22)	1.22 (4.0)
②	9.475 (31.09)	0.850 (2.79)
③	7.595 (24.92)	0.545 (1.79)
④	6.335 (20.79)	0.380 (1.25)
⑤	5.070 (16.64)	0.245 (0.80)
⑥	3.805 (12.49)	0.135 (0.45)
⑦	1.905 (6.25)	0.035 (0.11)
⑧	0 (0.00)	0 (0.00)



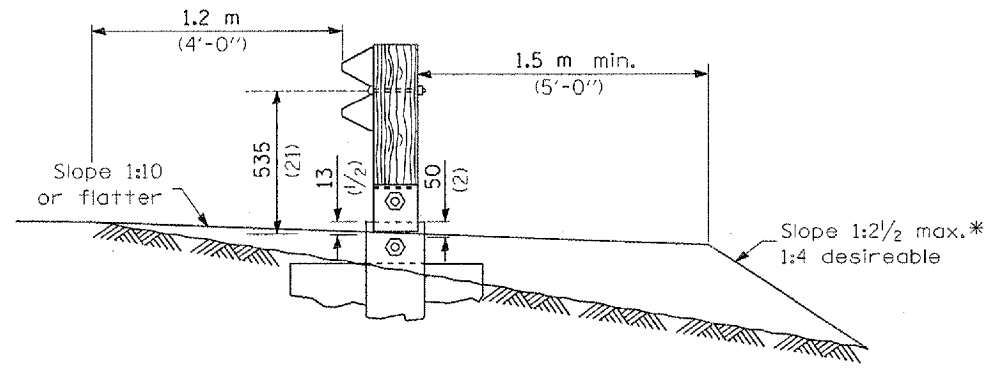
SHOULDER WIDENING TRANSITION



WOOD BREAKAWAY POSTS
TUBULAR STEEL FOUNDATIONS



PLAN



SECTION A-A

* If fill height exceeds 1.5 m (5'-0") use 1:3 max.

**DETAIL INCLUDED
FOR REPAIR ONLY**

GENERAL NOTES

See Standard 630001 for details of guardrail not shown.

Posts at location 1 & 2 shall be wood breakaway posts. Posts other than 1 & 2 may be either standard wood posts or steel posts, at the option of the Contractor. If standard wood posts are used, one post shall be located midway between and in lieu of posts 4 & 5. The offset (Y) for this post shall be 300 mm (12 inches).

A two-piece assembly may be substituted for the one piece nose shown above.

The bearing plate K shall be held in position by (2) two eightpenny nails driven into the post and bent over the top of the plate.

All slope ratios are expressed as units of vertical displacement to units of horizontal displacement (V:H).

All dimensions are in millimeters (inches) unless otherwise shown.

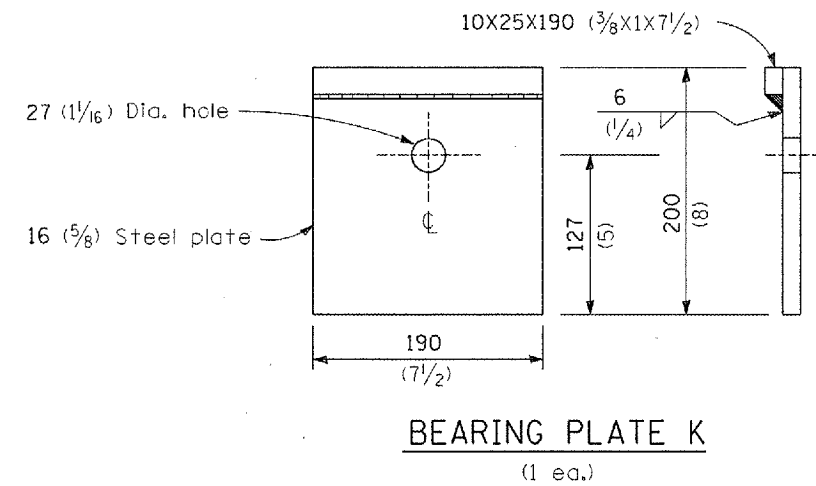
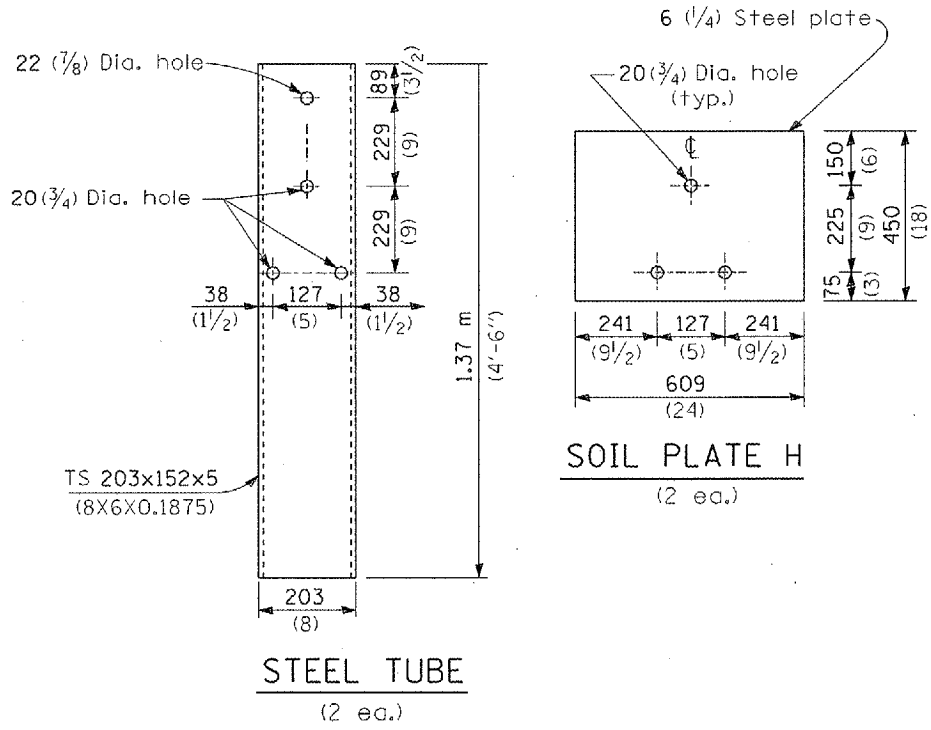
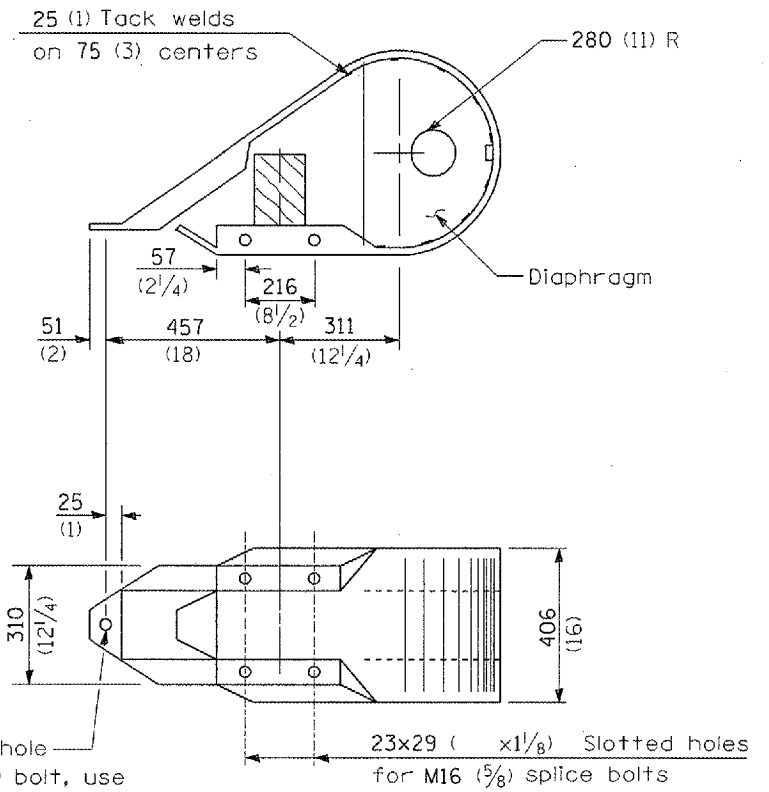
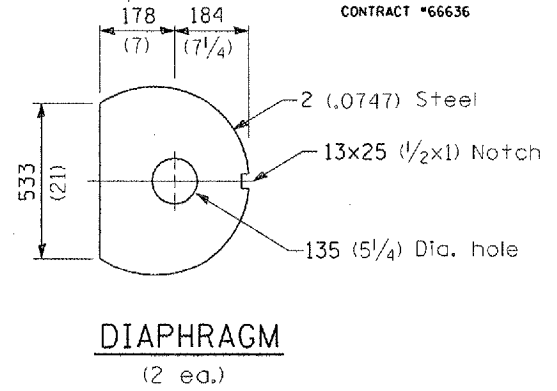
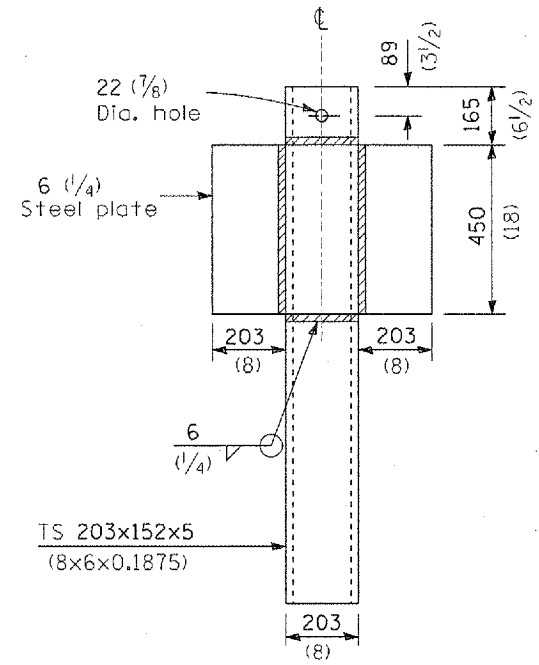
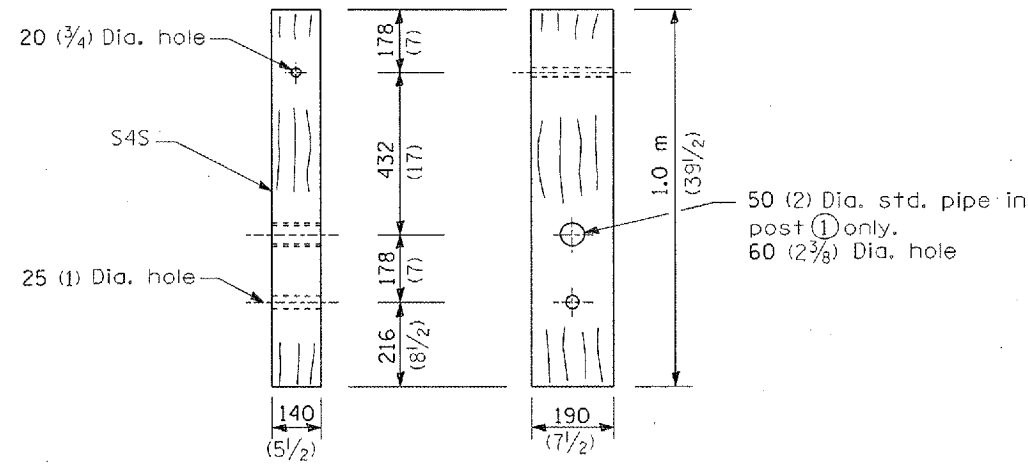
REVISIONS	
NAME	DATE

ILLINOIS DEPARTMENT OF TRANSPORTATION
**TRAFFIC BARRIER
TERMINAL TYPE 1**
STANDARD B.L.R. 23

2/14/2006 c:\proj\ecr\ecr\00606\deta\l.s.dgn

PLAN	SECTION	COUNTY	TOTAL SHEETS	SHEET NO.
VAR.	*	VAR.	15	10
STA.	TO STA.			
FED. ROAD DIST. NO.	ILLINOIS	FED. RD PROJECT		

• D-3 HIGHWAY DAMAGE REPAIR 2005
CONTRACT *66636



All dimensions are in millimeters (inches) unless otherwise shown.

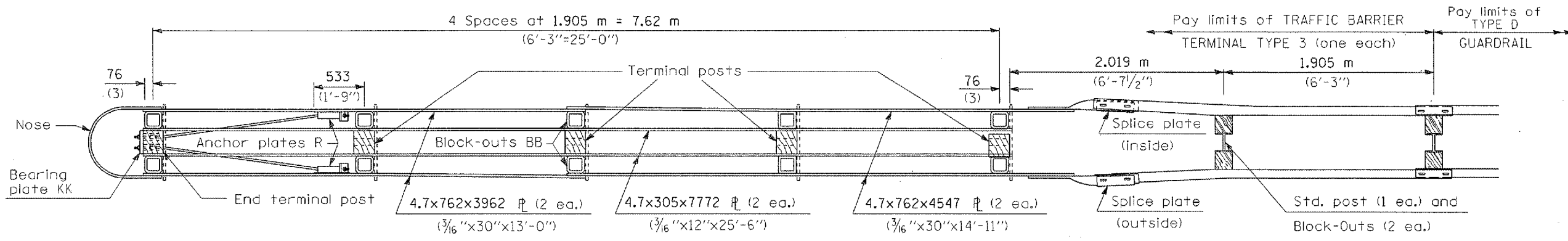
DETAIL INCLUDED FOR REPAIR ONLY

REVISIONS	
NAME	DATE

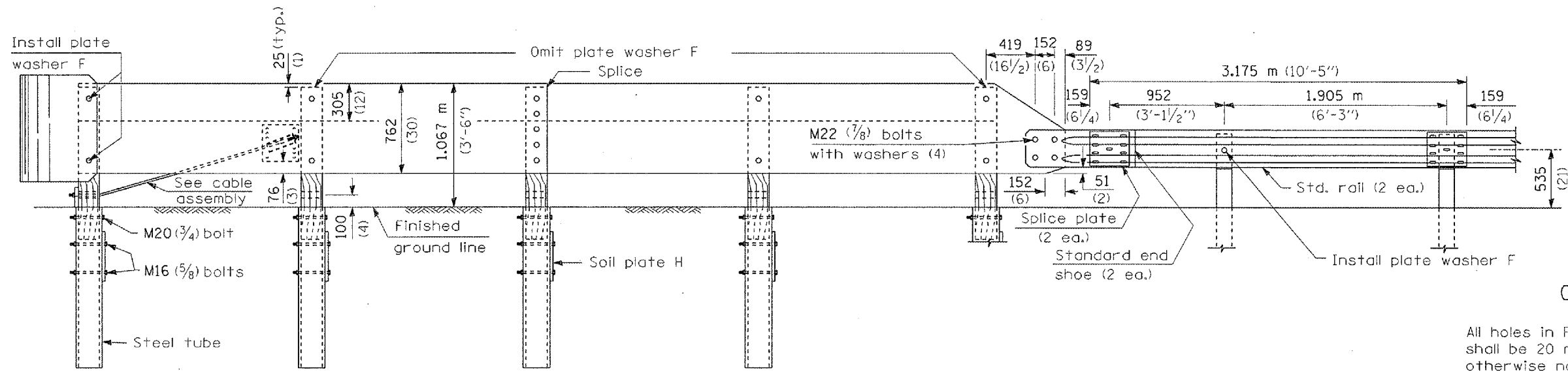
ILLINOIS DEPARTMENT OF TRANSPORTATION
TRAFFIC BARRIER TERMINAL TYPE 1
STANDARD B.L.R. 23

2/14/2006 c:\pcc\sect\sect\ed00606\detail.s.dgn

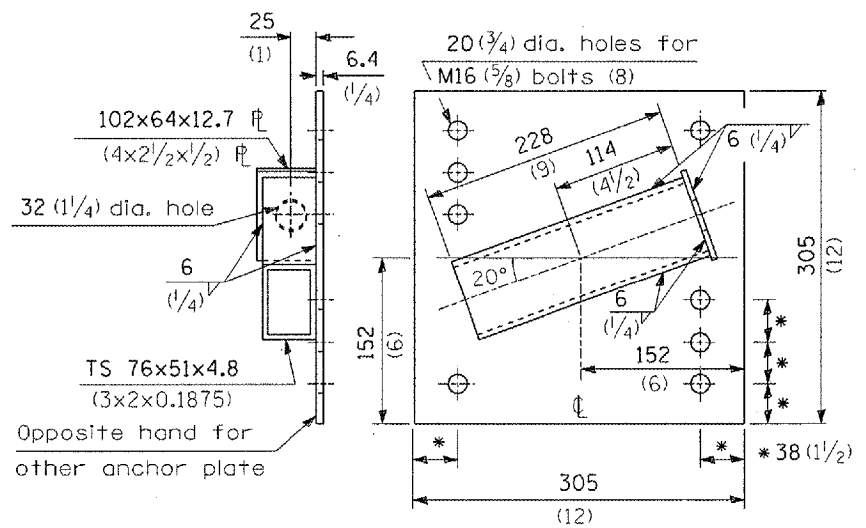
F. A. SHEET NO.	SECTION	COUNTY	TOTAL SHEETS	SHEET NO.
VAR.		VAR.	15	11
STA.		TO STA.		
FED. ROAD DIST. NO.	ILLINOIS	FED. AID PROJECT		
• D-3 HIGHWAY DAMAGE REPAIR 2005				
CONTRACT #66636				



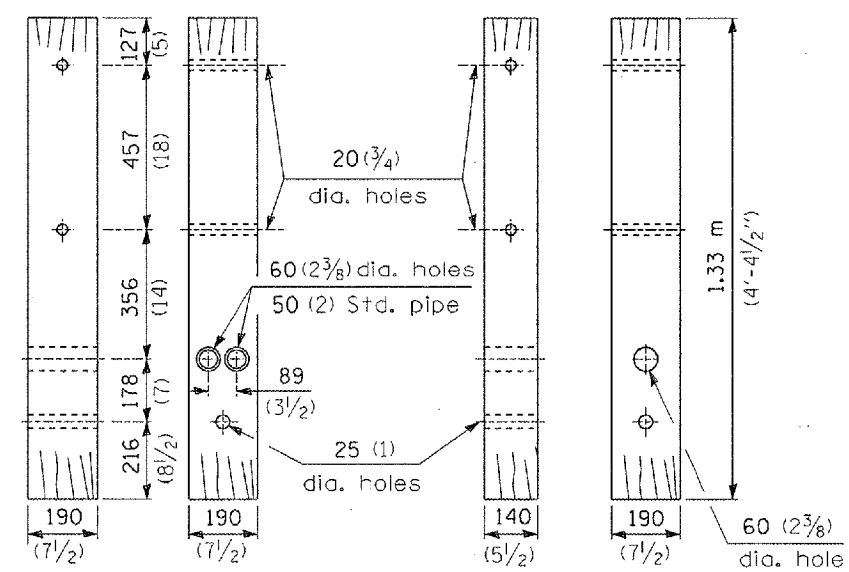
PLAN - TRAFFIC BARRIER TERMINAL TYPE 3



ELEVATION

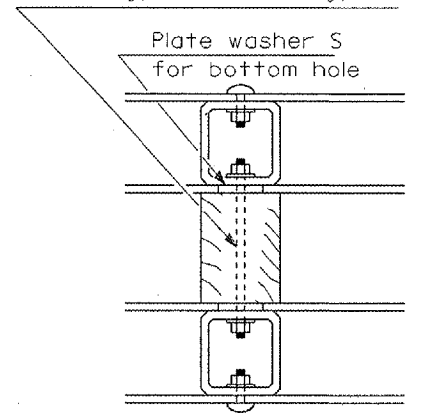


ANCHOR PLATE R
(1 ea. lt. hd. & 1 ea. rt. hd.)



END TERMINAL POST (1 ea.)
TERMINAL POST (4 ea. Type 3) (5 ea. Type 3A)

M16 (5/8) x 280 (11) threaded rod with nuts and washers (10 ea. Type 3) (12 ea. Type 3A)



TYPICAL BLOCK-OUT/POST ATTACHMENT

GENERAL NOTES

- All holes in Posts, Block-Outs and Plates shall be 20 mm (3/4") diameter unless otherwise noted.
- See Standard 630001 for details of guardrail elements not shown.
- Unless otherwise shown all bolts and nuts shall be Standard Post and Splice Bolts and Nuts (See Standard 630001).
- Block-Out AA shall be used at all locations unless otherwise noted.

DETAIL INCLUDED FOR REPAIR ONLY

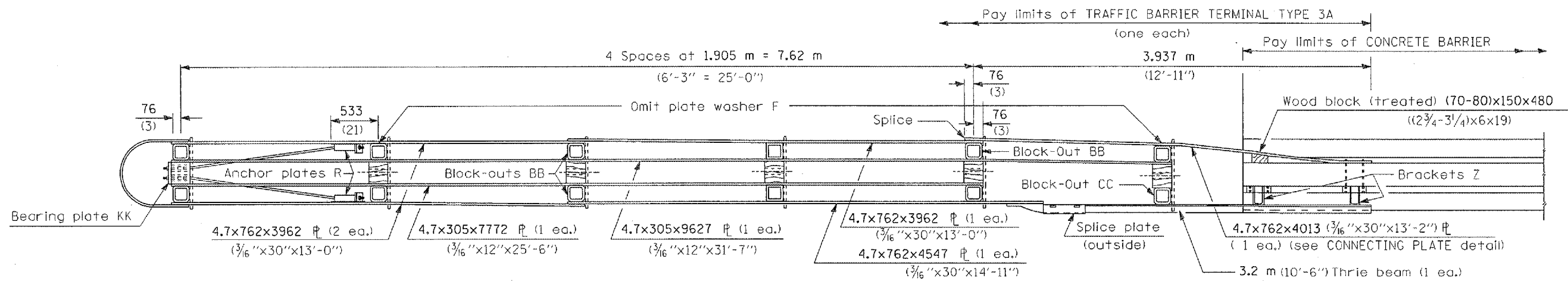
All dimensions are in millimeters (inches) unless otherwise shown.

REVISIONS	
NAME	DATE

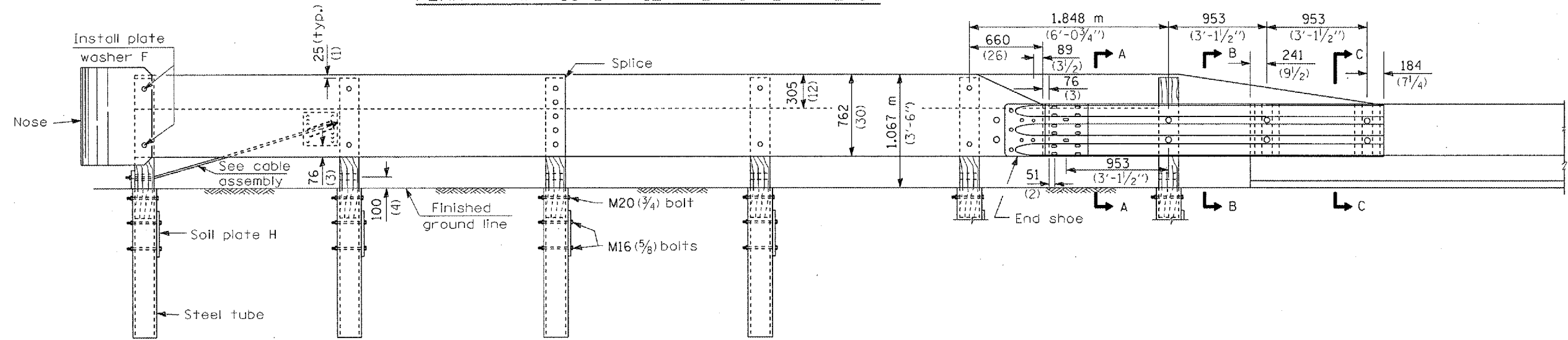
ILLINOIS DEPARTMENT OF TRANSPORTATION
TRAFFIC BARRIER TERMINAL TYPE 3 & 3A

SECTION	COUNTY	TOTAL SHEETS	SHEET NO.
VAR.	VAR.	15	12
STA. TO STA.		FED. ROAD DIST. NO.	
FED. ROAD DIST. NO.		FED. AID PROJECT	

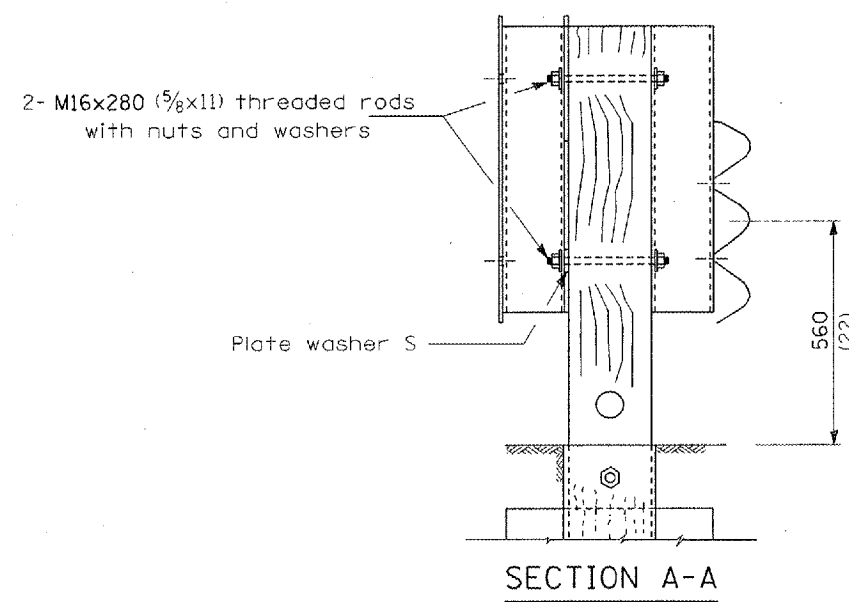
D-3 HIGHWAY DAMAGE REPAIR 2005
CONTRACT #66636



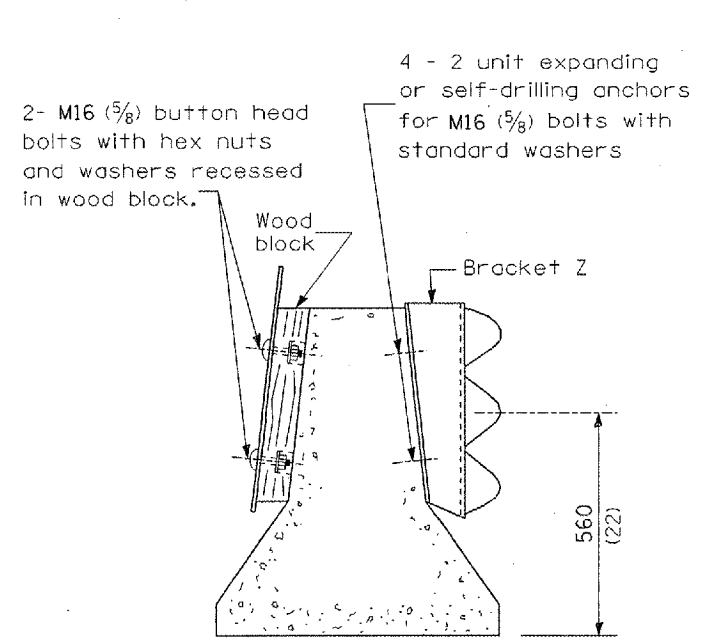
PLAN - TRAFFIC BARRIER TERMINAL TYPE 3A



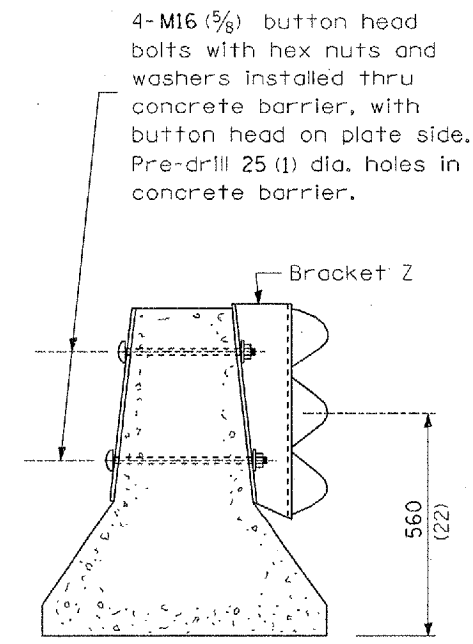
ELEVATION



SECTION A-A



SECTION B-B



SECTION C-C

DETAIL INCLUDED FOR REPAIR ONLY

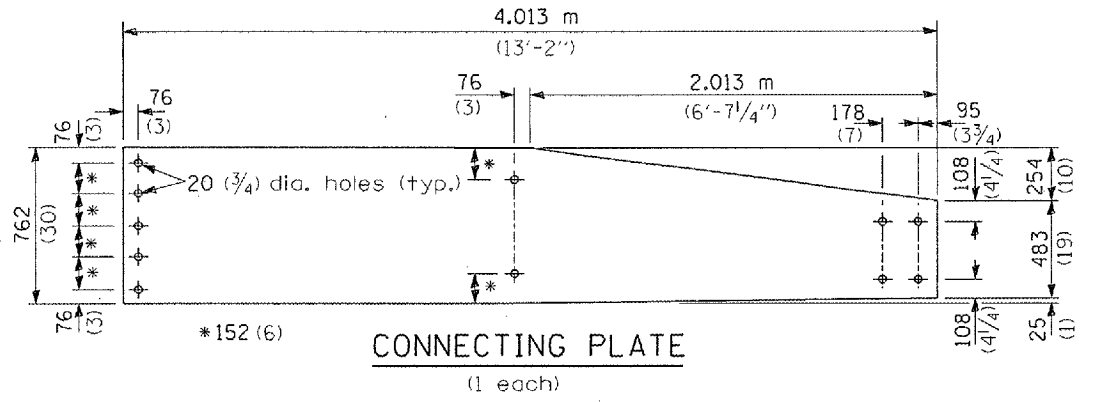
All dimensions are in millimeters (inches) unless otherwise shown.

ILLINOIS DEPARTMENT OF TRANSPORTATION
TRAFFIC BARRIER TERMINAL TYPE 3 & 3A

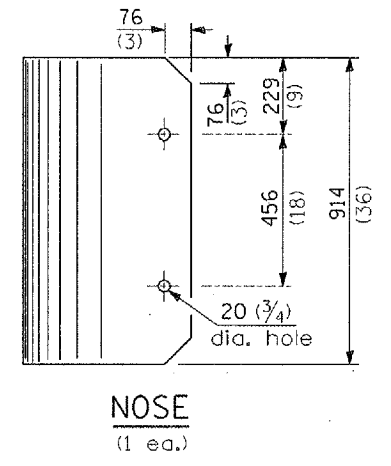
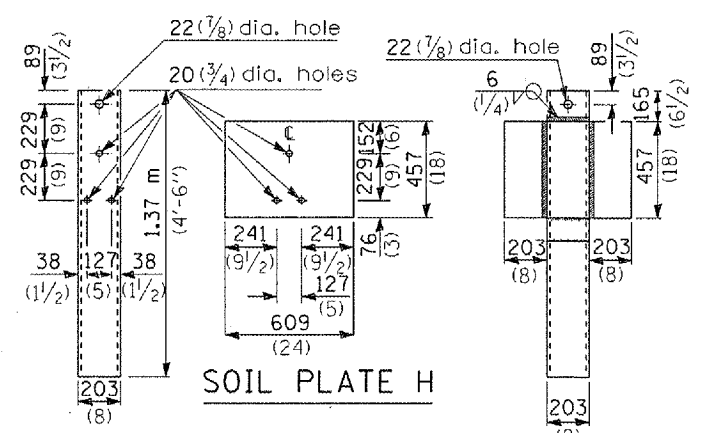
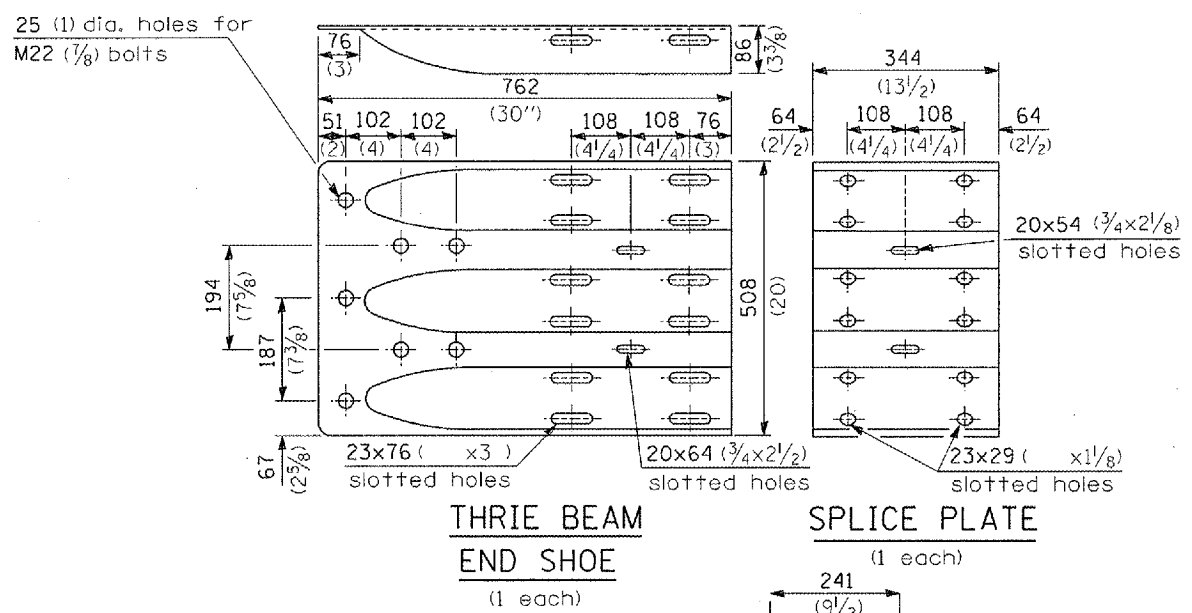
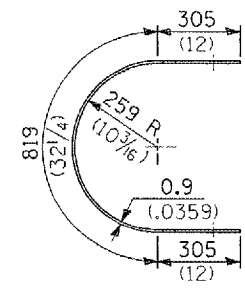
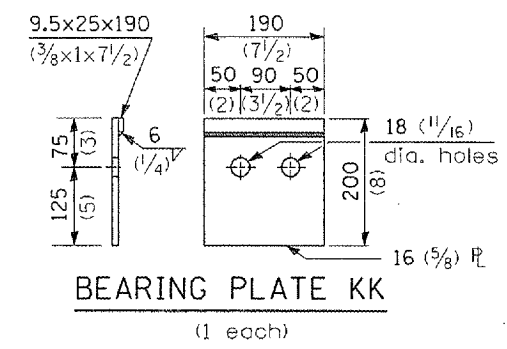
REVISIONS	
NAME	DATE

2/14/2006 C:\p\proj\scrs\ed00e06\draft\1.s.dgn

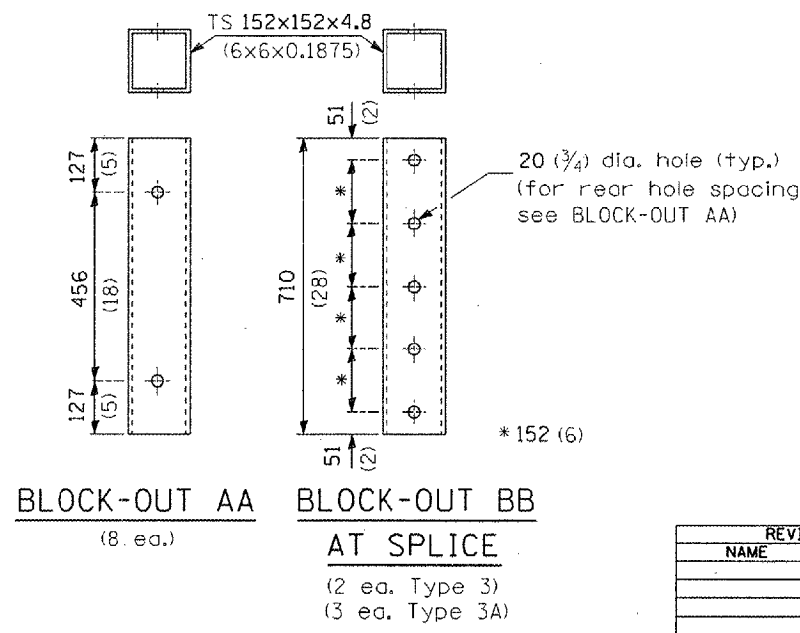
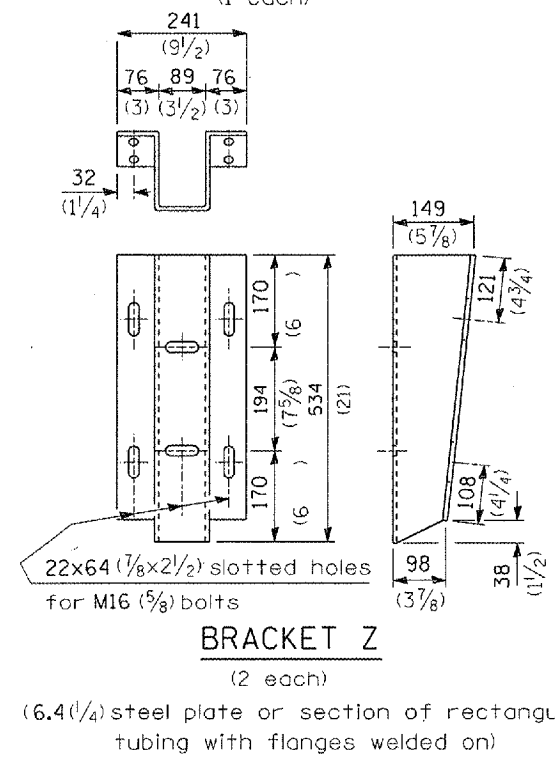
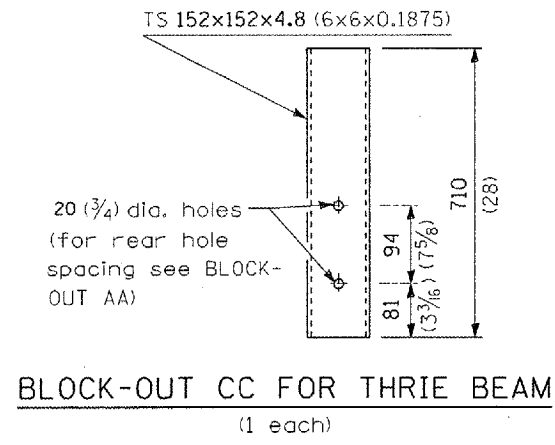
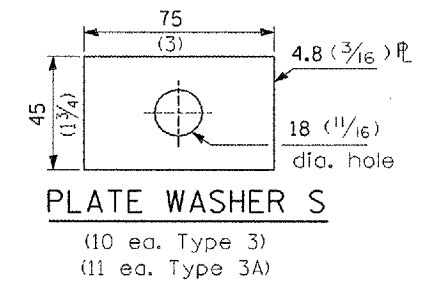
TYPE 3A ONLY



TYPE 3 & 3A



STEEL TUBE
TS 203x203x4.8 (8x8x0.1875) (end terminal post) (1 ea.)
TS 203x152x4.8 (8x6x0.1875) (terminal post) (4 ea. Type 3)
(5 ea. Type 3A)



DETAIL INCLUDED FOR REPAIR ONLY

All dimensions are in millimeters (inches) unless otherwise shown.

REVISIONS	
NAME	DATE

ILLINOIS DEPARTMENT OF TRANSPORTATION

TRAFFIC BARRIER TERMINAL TYPE 3 & 3A

2/14/2006 c:\proj\lects\led00606\deta11.s.dgn

* D-3 HIGHWAY DAMAGE REPAIR 2005
CONTRACT #66636

OFFSETS TO FACE OF RAIL

POST	DISTANCE X (m (ft.))	OFFSET Y (m (ft.))
POINT 0	0 (0)	0 (0)
④	7.60 (24.93)	0.56 (1.83)
⑧	15.14 (49.68)	1.60 (5.28)
⑫	22.60 (74.16)	3.16 (10.37)
⑰	29.94 (98.23)	5.20 (17.05)
⑳	37.13 (121.83)	7.71 (25.3)
㉔	44.14 (144.83)	10.70 (35.09)

Offsets (Y) are measured between the face of rail and the offset baseline, which is parallel to the pavement edge and passes through point 0.

The location of point 0 will vary, being dependent on structure details and the type of traffic barrier terminal utilized.

GENERAL NOTES

See Standard 630001 for details of guard-rail not shown.

*For dual structures skewed right forward, the nose of the Type 4 terminal shall be positioned longitudinally away from the structure for a distance equal to dimension Z. Appropriate adjustments to the length of the Type A guardrail and its offsets (Y) shall be calculated and used. All additional lengths of guardrail shall be in increments of 3.87 m (12'-6").

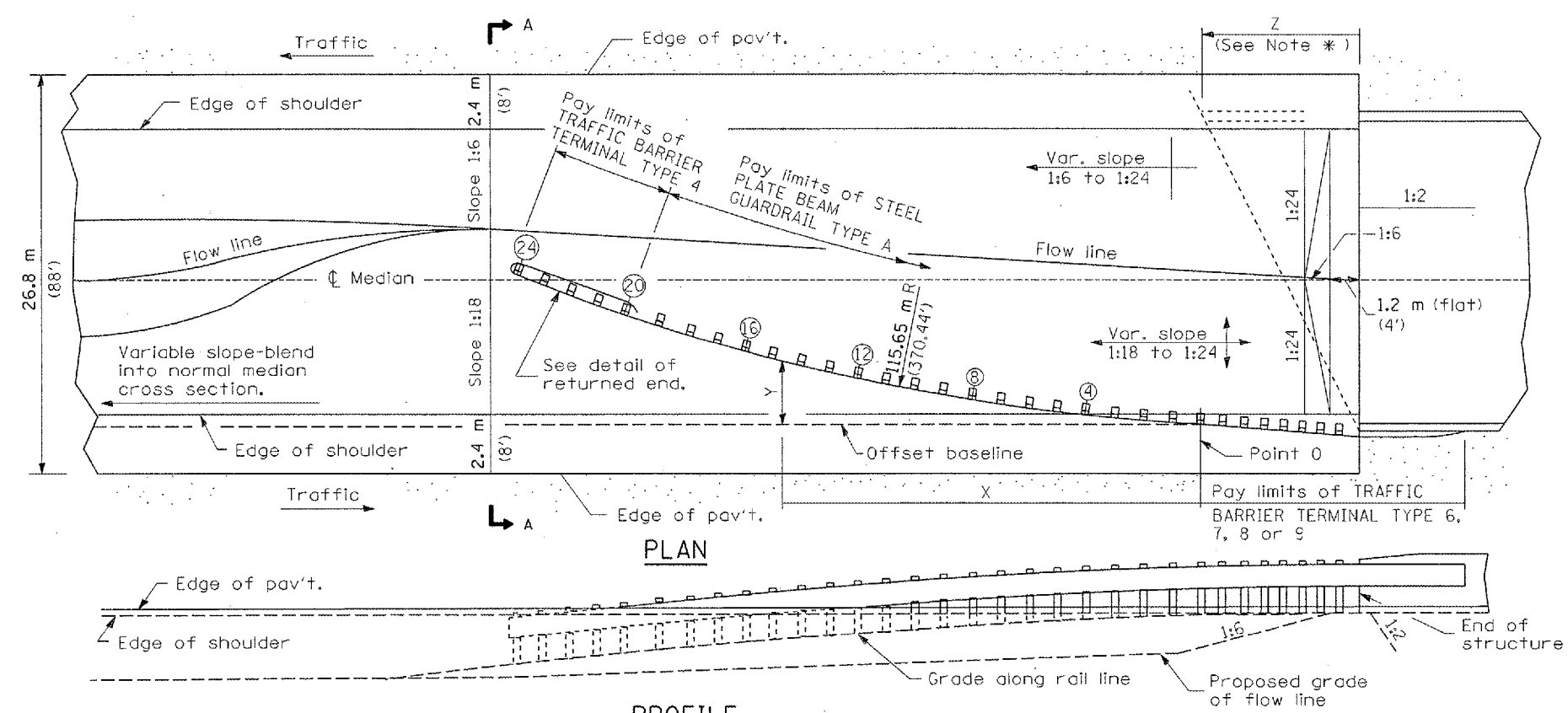
For dual structures that are 90° or skewed left forward, the length of guardrail is appropriate.

The bearing plate K shall be held in position by (2) two eight penny nails driven into the post and bent over the top of the plate.

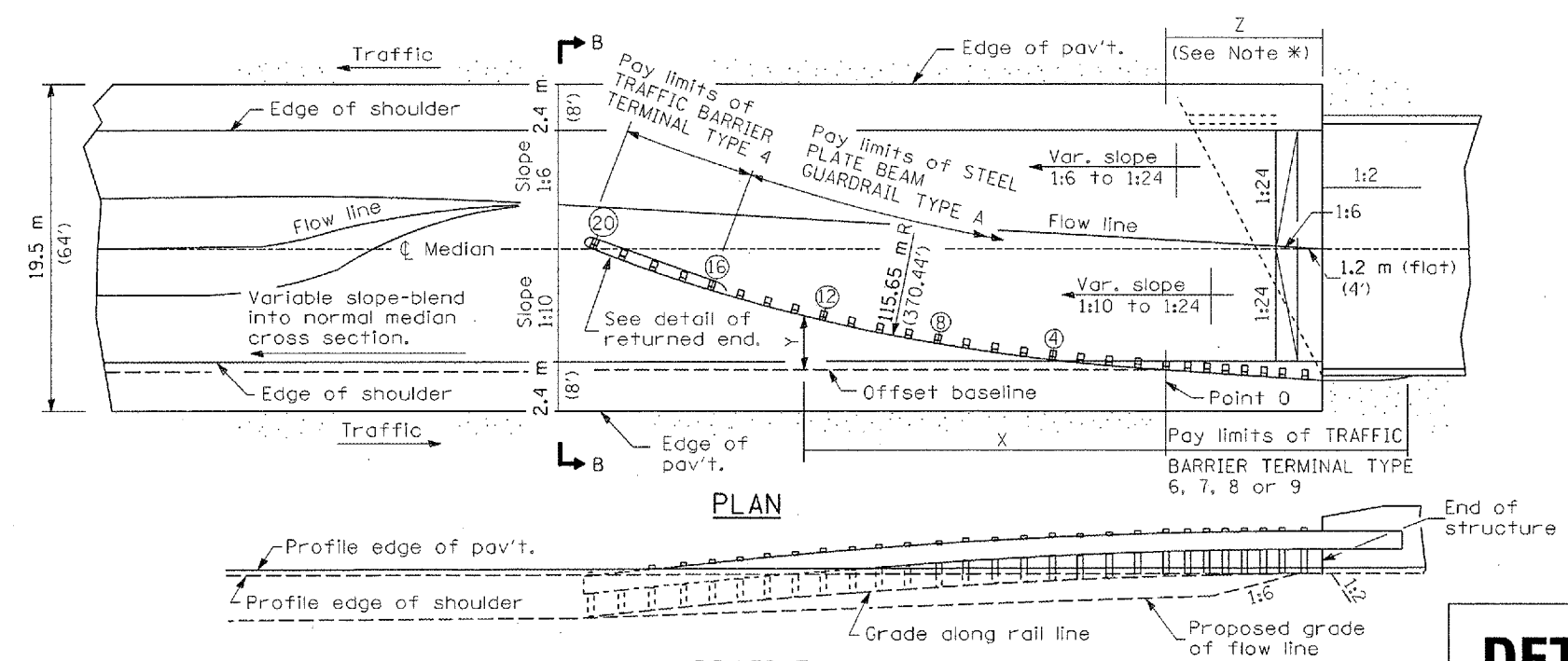
All slopes are expressed as units of vertical displacement to units of horizontal displacement (V:H).

All dimensions are in millimeters (inches) unless otherwise shown.

All dimensions are in millimeters (inches) unless otherwise shown.



PROFILE
ASSEMBLY FOR 26.8 m (88 ft.) MEDIAN



PROFILE
ASSEMBLY FOR 19.5 m (64 ft.) MEDIAN

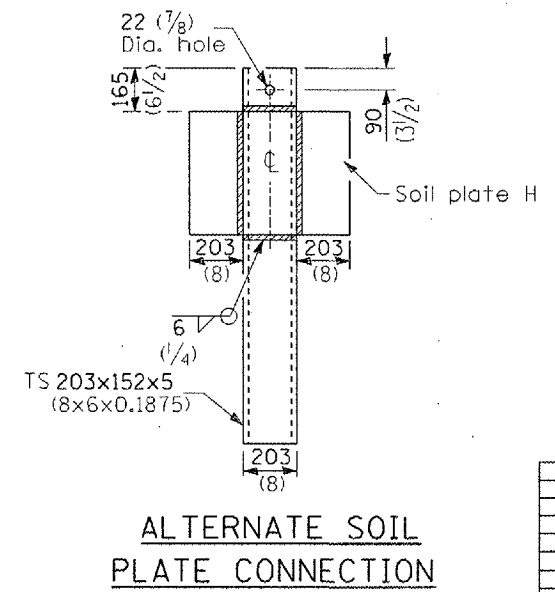
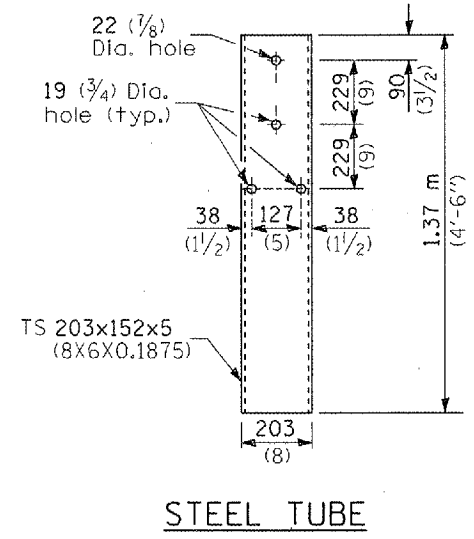
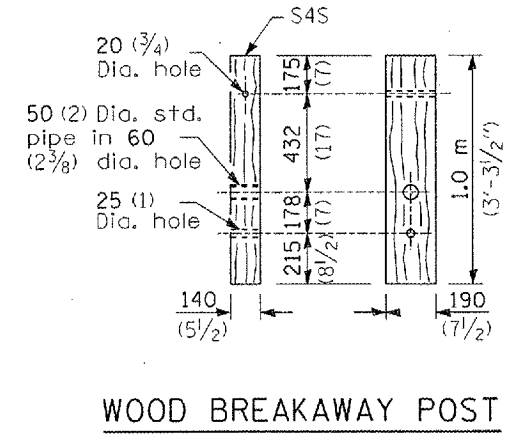
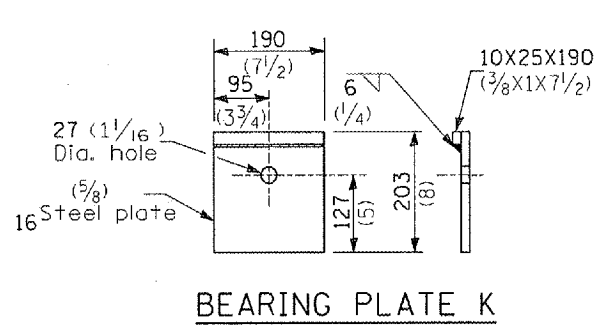
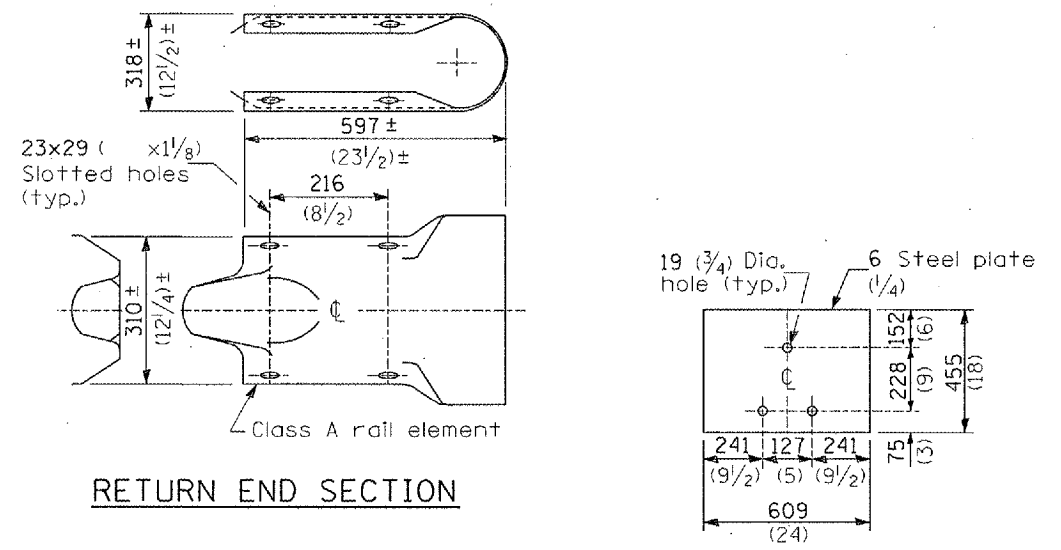
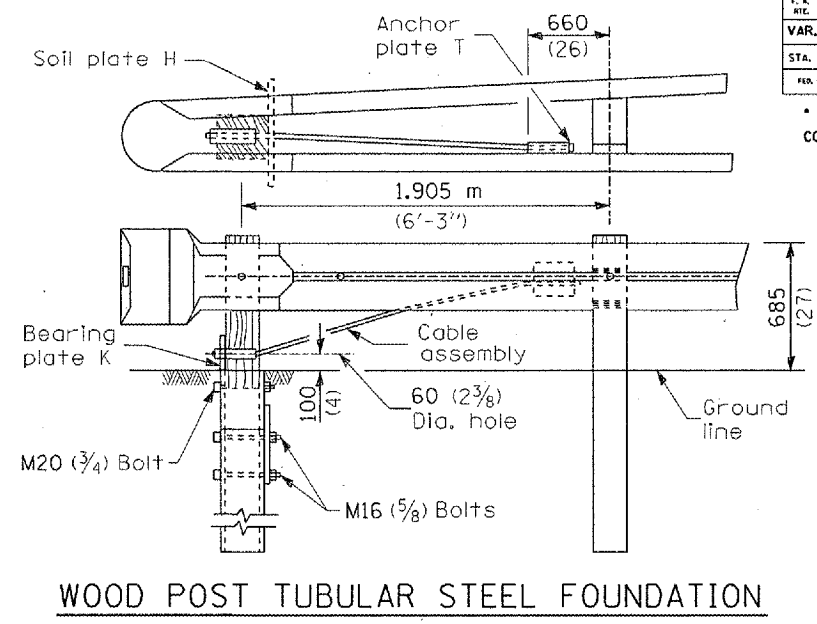
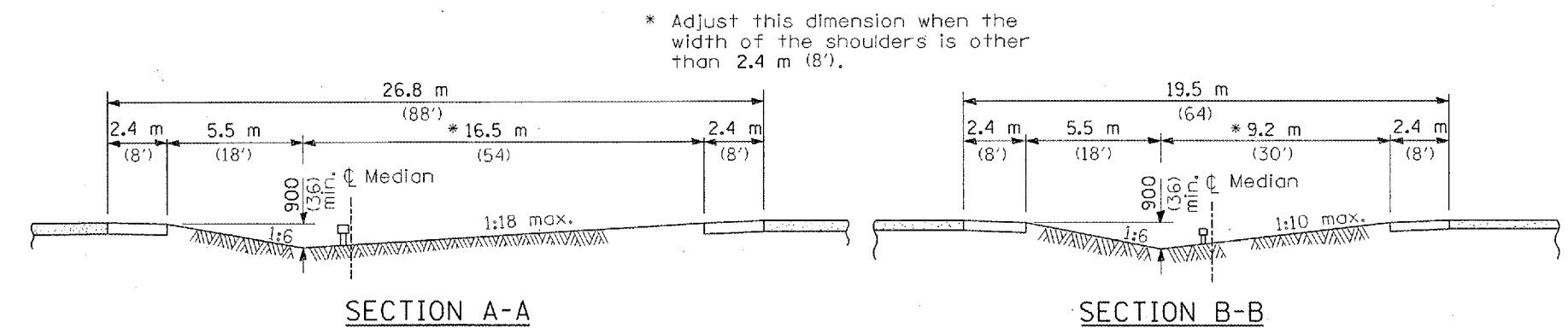
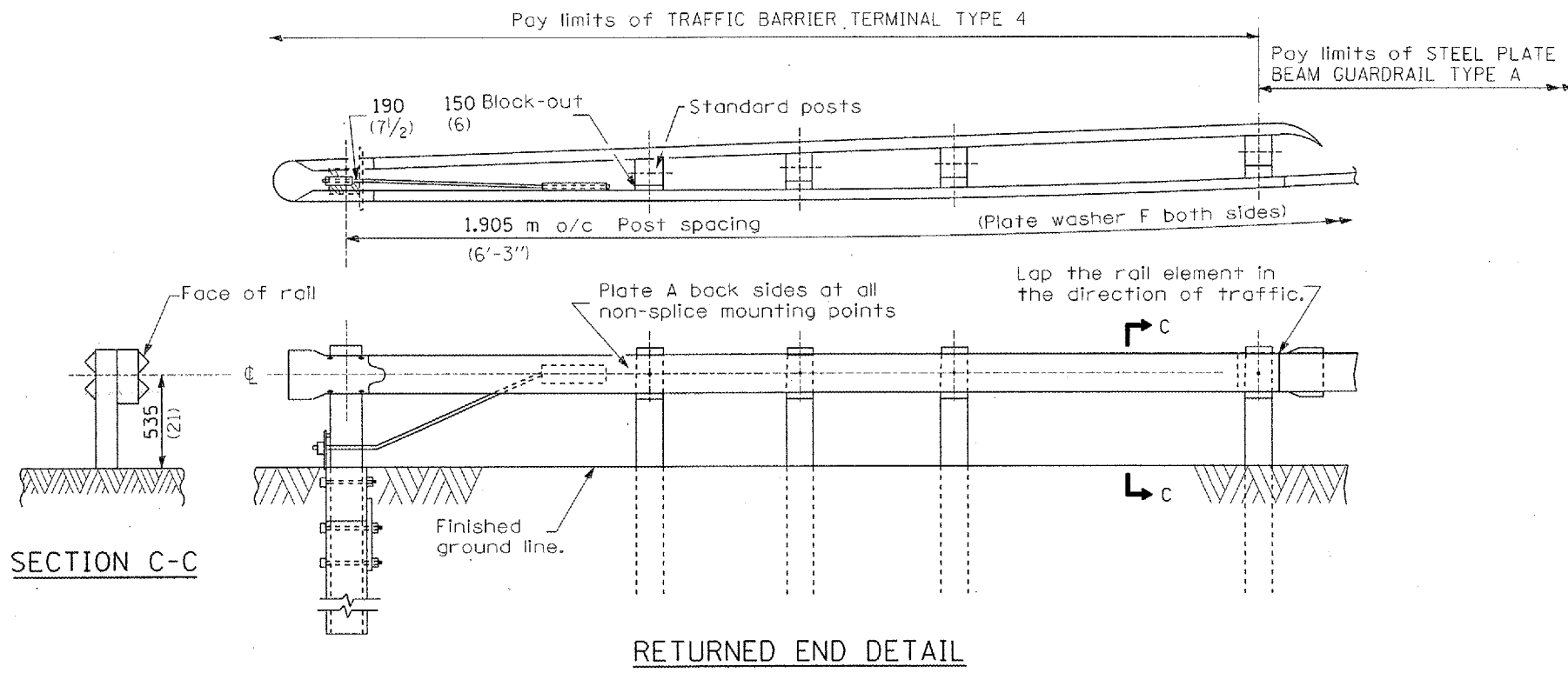
DETAIL INCLUDED FOR REPAIR ONLY

REVISIONS	
NAME	DATE

ILLINOIS DEPARTMENT OF TRANSPORTATION
TRAFFIC BARRIER TERMINAL TYPE 4

2/14/2006 c:\projects\led00606\details\led00606.dgn

F. A. ATE.	SECTION	COUNTY	TOTAL SHEETS	SHEET NO.
VAR.	*	VAR.	15	15
STA.	TO STA.			
FED. ROAD DIST. NO.	ILLINOIS	FED. AID PROJECT		
* D-3 HIGHWAY DAMAGE REPAIR 2005				
CONTRACT #66636				



DETAIL INCLUDED FOR REPAIR ONLY

All dimensions are in millimeters (inches) unless otherwise shown.

REVISIONS	
NAME	DATE

ILLINOIS DEPARTMENT OF TRANSPORTATION

TRAFFIC BARRIER TERMINAL TYPE 4

2/14/2006 c:\proj\lectrs\led00606\det.dwg