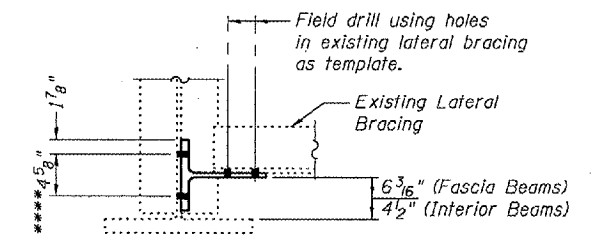
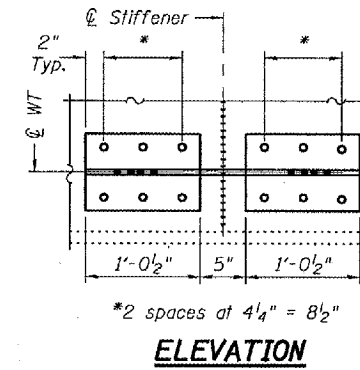
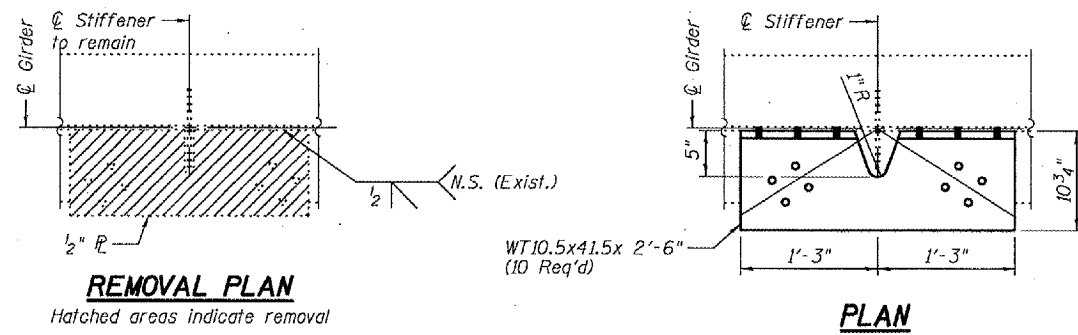


STATE OF ILLINOIS
DEPARTMENT OF TRANSPORTATION

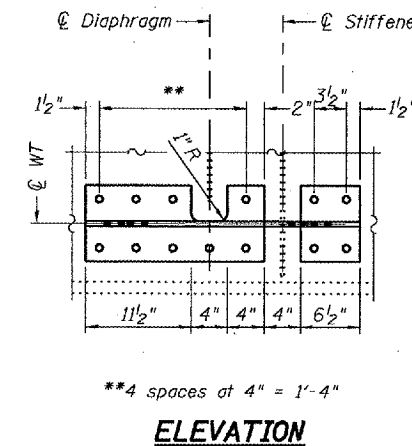
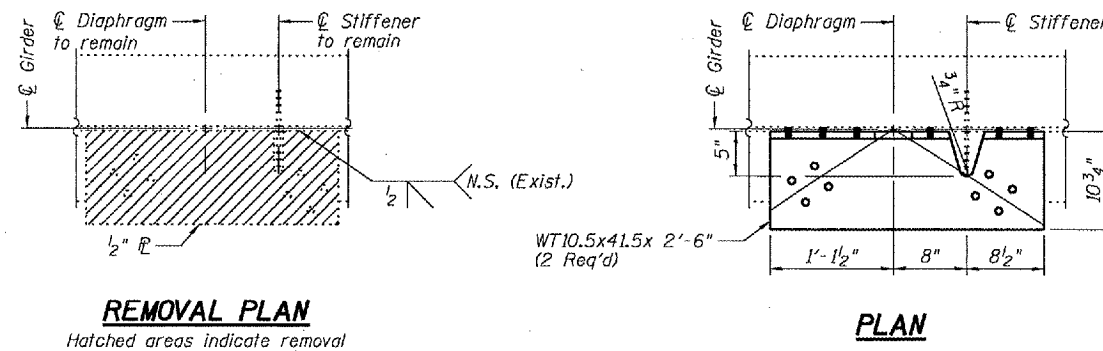
ROUTE NO.	SECTION	COUNTY	TOTAL SHEETS	SHEET NO.	SHEET NO. 2 2 SHEETS
		Tazewell	9	9	
FED. ROAD DIST. NO. 7	ILLINOIS	FED. AID PROJECT			

Contract Number: 68585



****Field drill holes in existing girder web using holes in WT section as a template.

REPAIR A

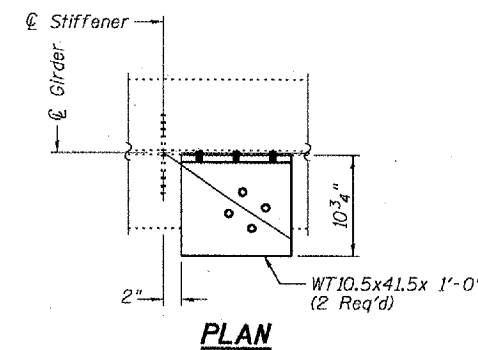
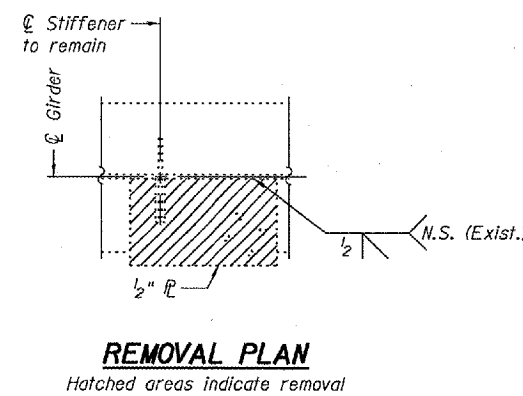


REPAIR B

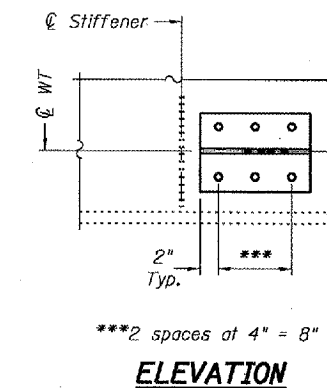
Procedure for Hoan Repair Detail
1. Remove existing 1/2" connecting R. The minimum distance from cut to face of web shall be the larger of 1/4" or web to R weld size, with removal of remaining material by grinding as described below. The cut shall be made parallel to the web without angling the cut towards the web. Equipment and method of cutting shall be approved by the Engineer. Any method of removal to be used shall ensure that no damage is done to the existing web, vertical stiffener or welds connecting these elements. Cutting shall be done in a manner such that the paint on the opposite face of the web is not damaged. If damage occurs, the damaged area shall be repainted at the contractor's expense and procedures shall be modified to prevent damage at subsequent removal locations.

2. Remove material between cut and web by grinding and grind smooth at web surface. Web R surfaces shall have a roughness average (Ra) of 250 μin. or less. Grinding equipment shall be approved by the Engineer. The grinding operation should not gouge the girder web R.

3. The web surface at the modification shall be inspected using dye penetrant or magnetic particle methods. Any cracks found shall be identified and reported to the Bureau of Bridges and Structures for further disposition



REPAIR C



REPAIR DETAILS
I-155 (N.B.) / MACKINAW RIVER
TAZEWELL COUNTY
SN 090-0100

DESIGNED	A.T.H.
CHECKED	P.S.J.
DRAWN	Drew Christopher
CHECKED	A.T.H. P.S.J.

March 1, 2006	
EXAMINED	John A. Morris ENGINEER OF STRUCTURAL SERVICES
PASSED	Ralph E. Anderson ENGINEER OF BRIDGES AND STRUCTURES