

CONTRACT NO. 70483

F.A.P. RTE.	SECTION	COUNTY	TOTAL SHEETS	SHEET NO.
323	(145,146)L	EDGAR	9	1

D-95-005-06

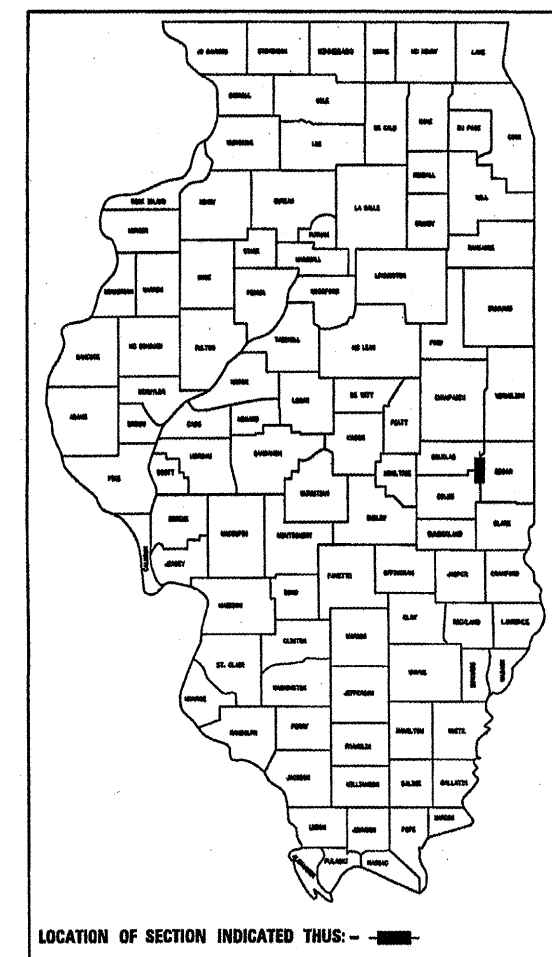
STATE OF ILLINOIS
DEPARTMENT OF TRANSPORTATION
DIVISION OF HIGHWAYS
**PLANS FOR PROPOSED
HIGHWAY IMPROVEMENT**

FOR INDEX OF SHEETS, SEE SHEET NO. 2
FOR SUMMARY OF QUANTITIES, SEE SHEET NO. 3

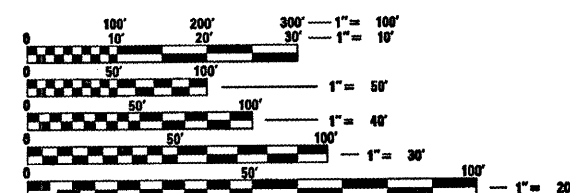
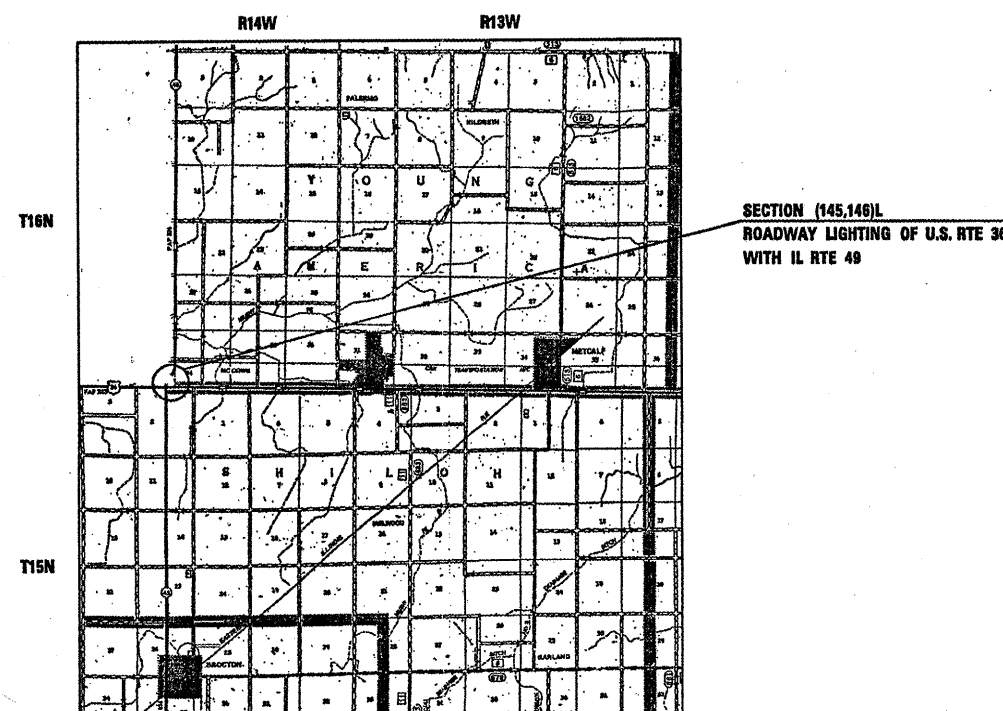
SCALES { LIGHTING PLAN 1"=50'
FLASHER PLAN 1"=20'
PROFILES - N.A.
CROSS SECTIONS - N.A.

**F.A.P. ROUTE 323 (US RTE 36)
SECTION (145,146)L
EDGAR COUNTY**

C-95-005-06
HIGHWAY LIGHTING IMPROVEMENT



LOCATION OF SECTION INDICATED THUS: - - -



FULL SIZE PLANS HAVE BEEN PREPARED USING STANDARD ENGINEERING SCALES. REDUCED SIZED PLANS WILL NOT CONFORM TO STANDARD SCALES. IN MAKING MEASUREMENTS ON REDUCED PLANS, THE ABOVE SCALES MAY BE USED.

CONTRACT NO. 70483

STATE OF ILLINOIS
DEPARTMENT OF TRANSPORTATION
DIVISION OF HIGHWAYS

SUBMITTED FEB 18, 20 06
Joseph E. Come
DEPUTY DIRECTOR OF HIGHWAYS, REGION ENGINEER

MARCH 24, 20 06
Mike Hene
ENGINEER OF DESIGN AND ENVIRONMENT

MARCH 24, 20 06
Milton R. Sees P.E.
DIRECTOR OF HIGHWAYS, CHIEF ENGINEER

FOR UNDERGROUND UTILITY
LOCATIONS CALL
TOLL FREE J.U.L.I.E. TELEPHONE NO.
1-800-892-0123
YOUNG AMERICA & SHILOH
TOWNSHIPS

**PRINTED BY THE AUTHORITY
OF THE STATE OF ILLINOIS**

DESIGNED BY: JEFF ALLEN (217) 465-4181