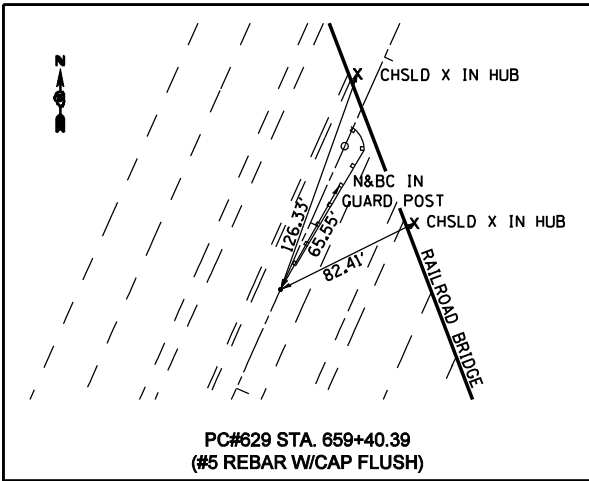


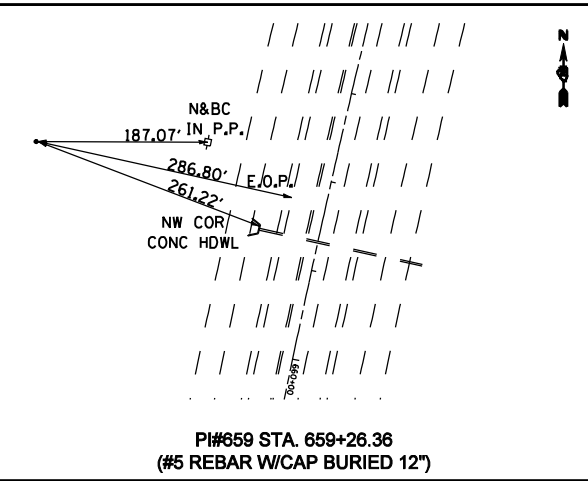
RTE.	SECTION	COUNTY	TOTAL SHEETS	SHEET NO.
•	RS,R	••	302	27

FED. ROAD DIST. NO. ILLINOIS FED. AID PROJECT  
 • FAU 8239, FAS 1767, FAS 1766 & SBI 16 (OLD US 66)  
 •• MONTGOMERY & MACOUPIN COUNTIES

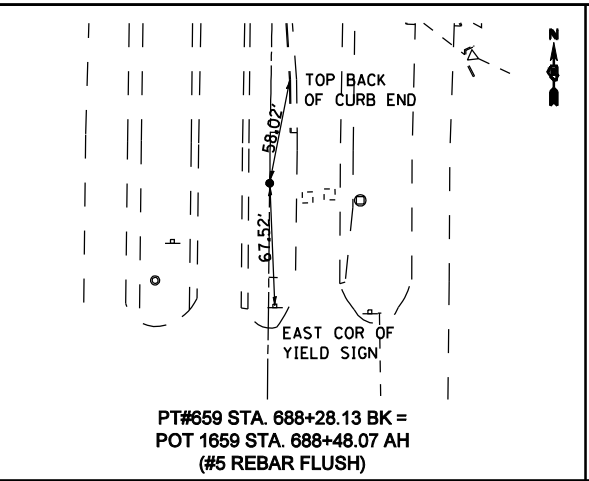
**CONTRACT NO. 72526**



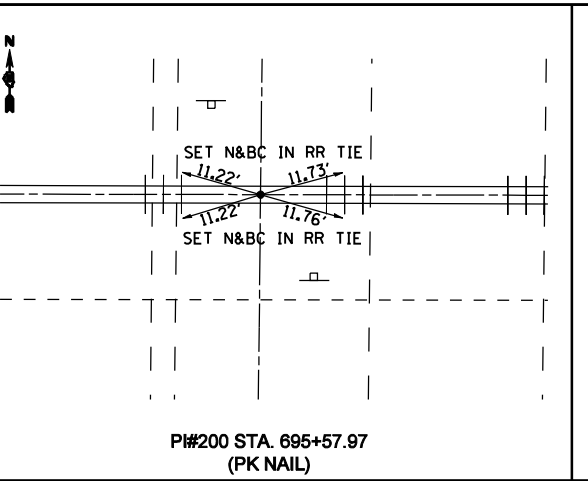
PC#629 STA. 659+40.39  
 (#5 REBAR W/CAP FLUSH)



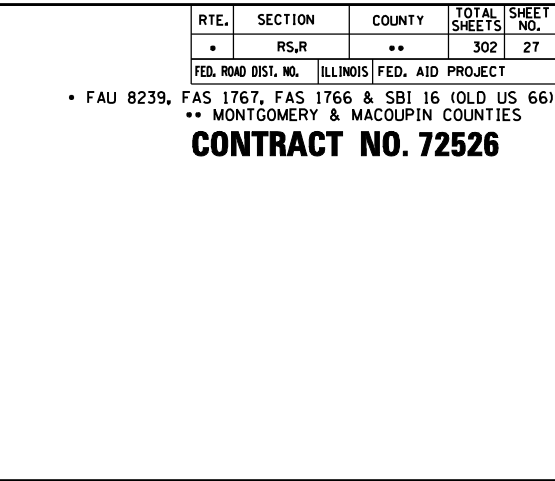
PI#659 STA. 659+26.36  
 (#5 REBAR W/CAP BURIED 12")



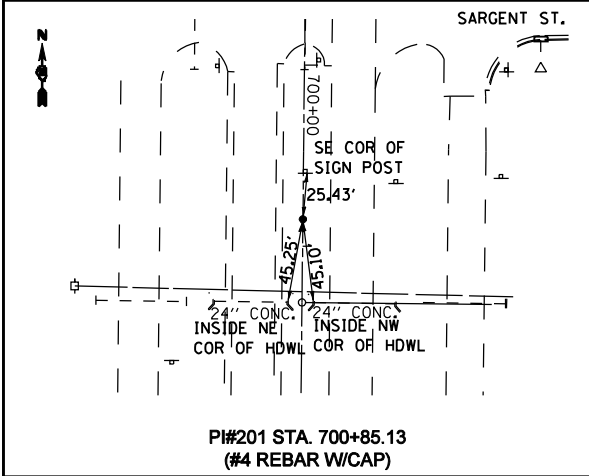
PT#659 STA. 688+28.13 BK =  
 POT 1659 STA. 688+48.07 AH  
 (#5 REBAR FLUSH)



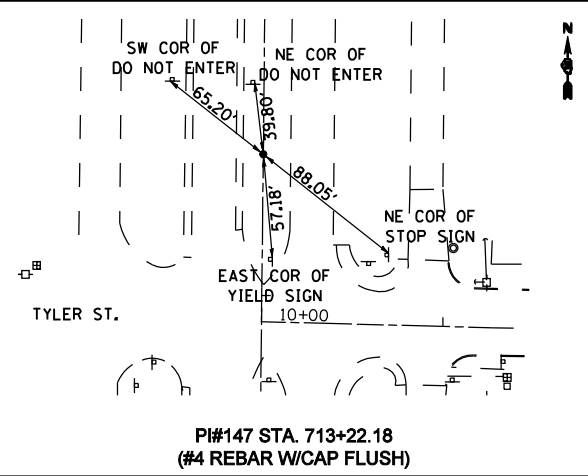
PI#200 STA. 695+57.97  
 (PK NAIL)



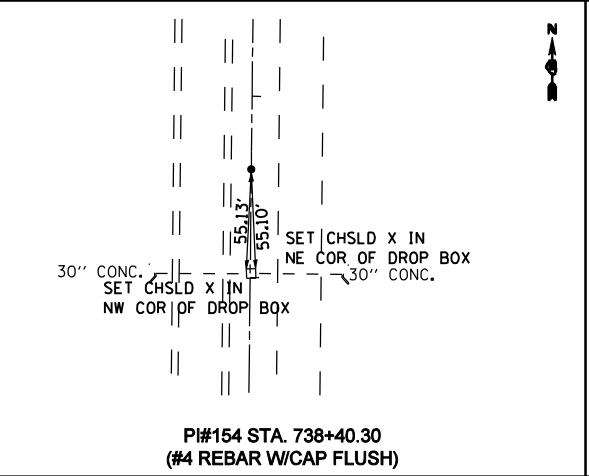
PC#203 STA. 785+26.49  
 (#4 REBAR W/CAP FLUSH)



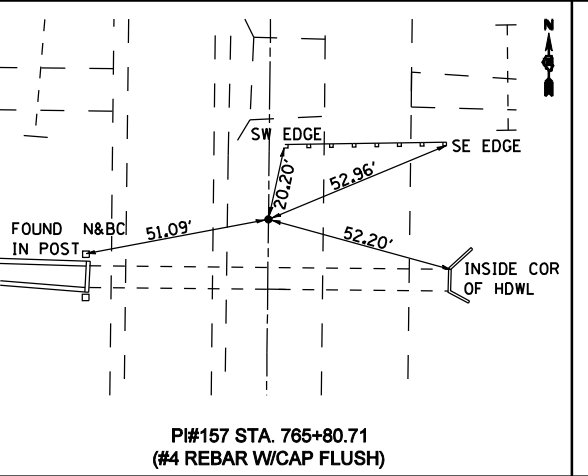
PI#201 STA. 700+85.13  
 (#4 REBAR W/CAP)



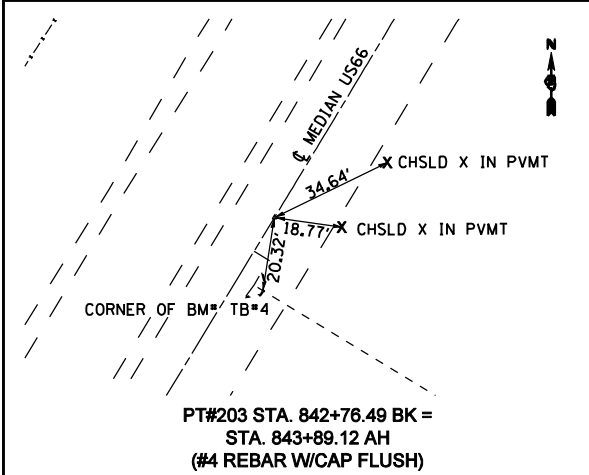
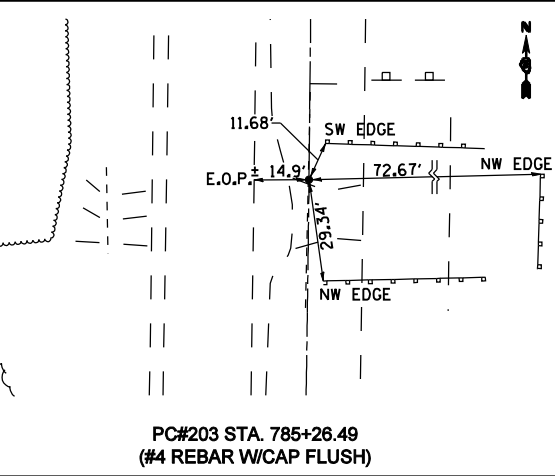
PI#147 STA. 713+22.18  
 (#4 REBAR W/CAP FLUSH)



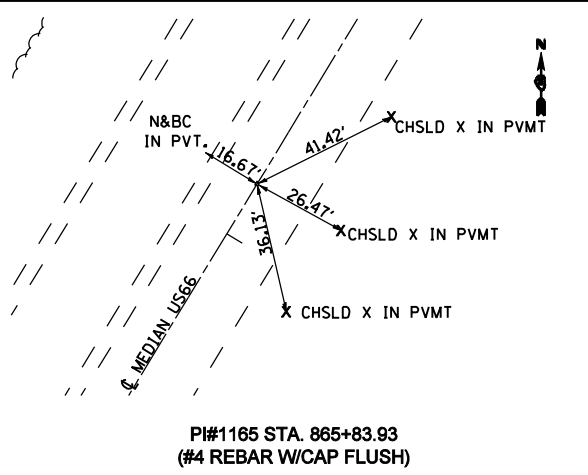
PI#154 STA. 738+40.30  
 (#4 REBAR W/CAP FLUSH)



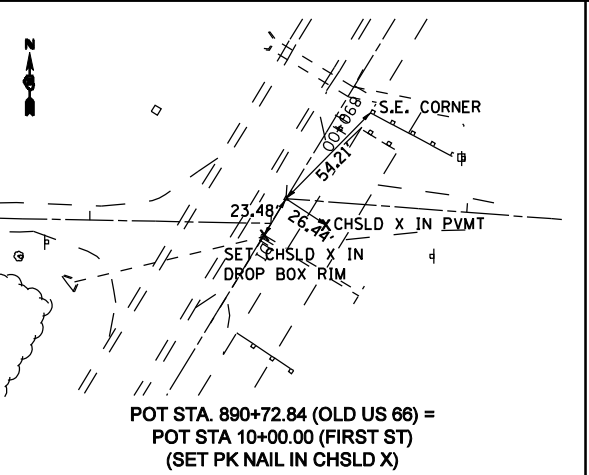
PI#157 STA. 765+80.71  
 (#4 REBAR W/CAP FLUSH)



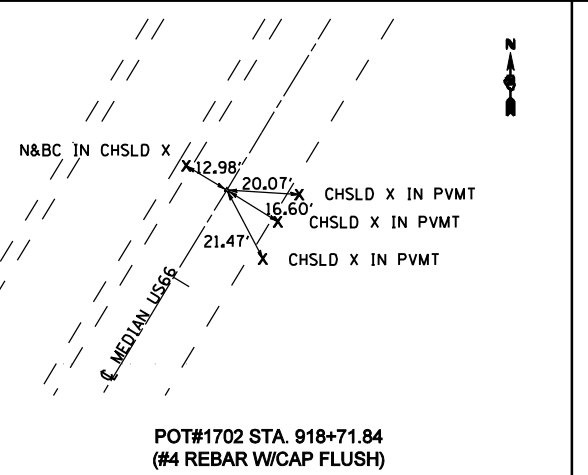
PT#203 STA. 842+76.49 BK =  
 STA. 843+89.12 AH  
 (#4 REBAR W/CAP FLUSH)



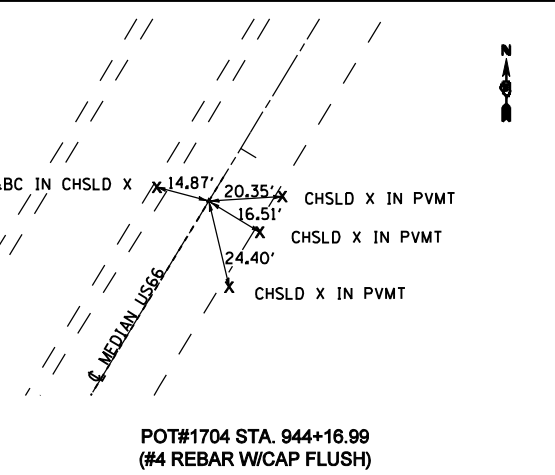
PI#1165 STA. 865+83.93  
 (#4 REBAR W/CAP FLUSH)



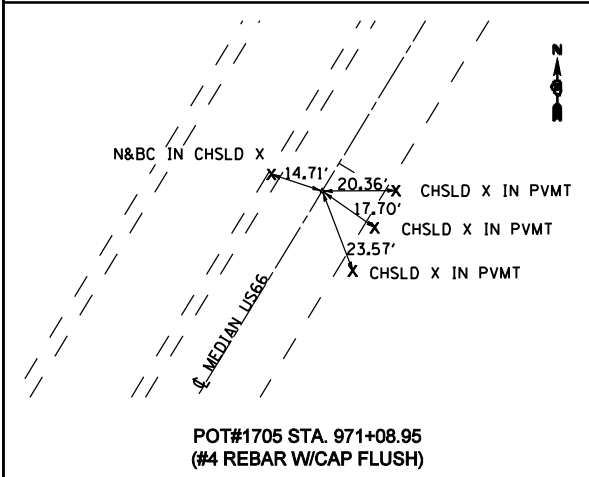
POT STA. 890+72.84 (OLD US 66) =  
 POT STA 10+00.00 (FIRST ST)  
 (SET PK NAIL IN CHSLD X)



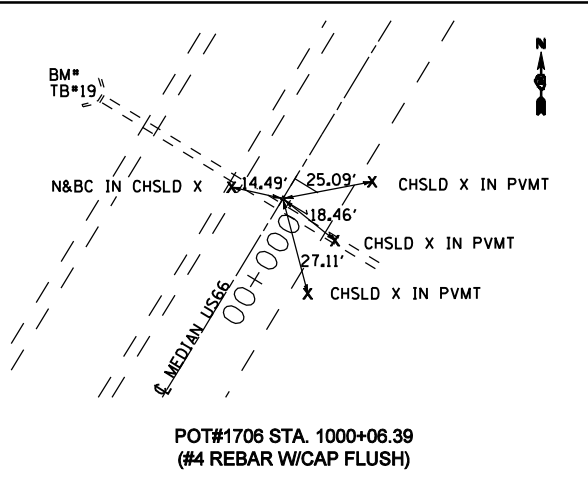
POT#1702 STA. 918+71.84  
 (#4 REBAR W/CAP FLUSH)



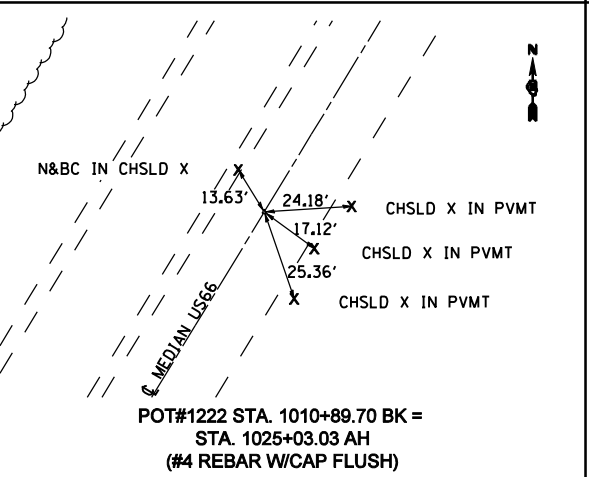
POT#1704 STA. 944+16.99  
 (#4 REBAR W/CAP FLUSH)



POT#1705 STA. 971+08.95  
 (#4 REBAR W/CAP FLUSH)



POT#1706 STA. 1000+06.39  
 (#4 REBAR W/CAP FLUSH)



POT#1222 STA. 1010+89.70 BK =  
 STA. 1025+03.03 AH  
 (#4 REBAR W/CAP FLUSH)

REVISIONS	
NAME	DATE

ILLINOIS DEPARTMENT OF TRANSPORTATION  
**CROSS TIES & BENCHMARKS**  
 SCALE: VERT. DATE 2/8/2006  
 HORIZ. DATE  
 DRAWN BY  
 CHECKED BY

•DGN-SPEC•  
 •DATE-TIME•  
 •REF01