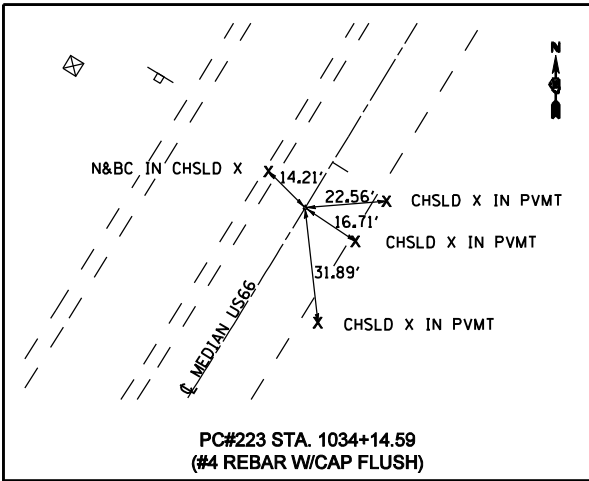


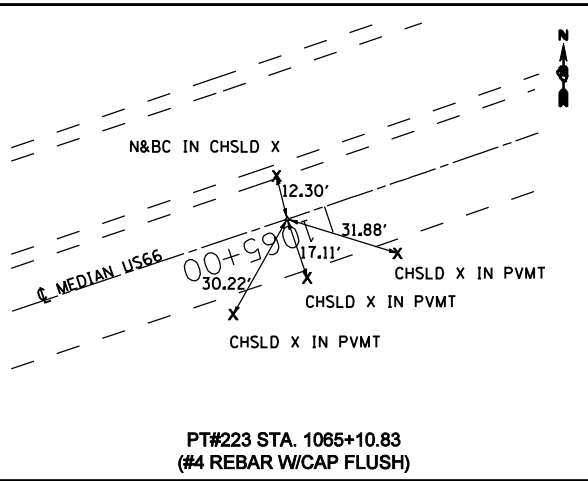
RTE.	SECTION	COUNTY	TOTAL SHEETS	SHEET NO.
•	RS,R	••	302	28

FED. ROAD DIST. NO. ILLINOIS FED. AID PROJECT
 • FAU 8239, FAS 1767, FAS 1766 & SBI 16 (OLD US 66)
 •• MONTGOMERY & MACOUPIN COUNTIES

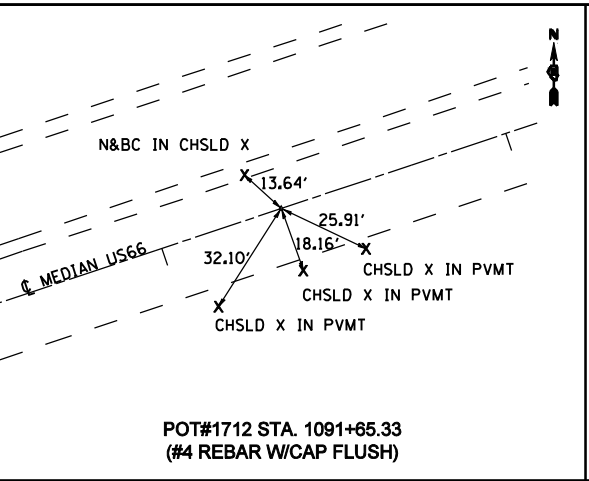
CONTRACT NO. 72526



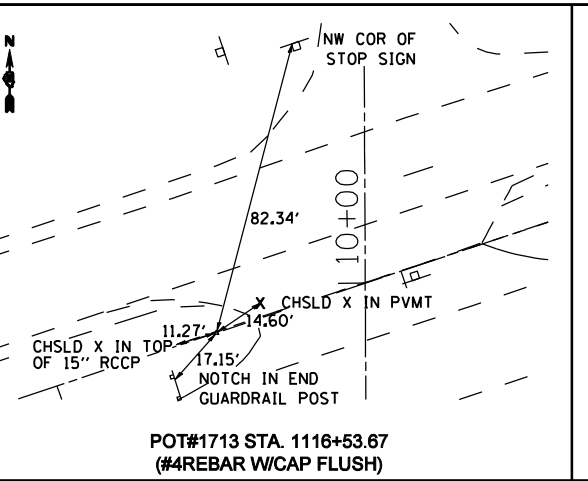
PC#223 STA. 1034+14.59
 (#4 REBAR W/CAP FLUSH)



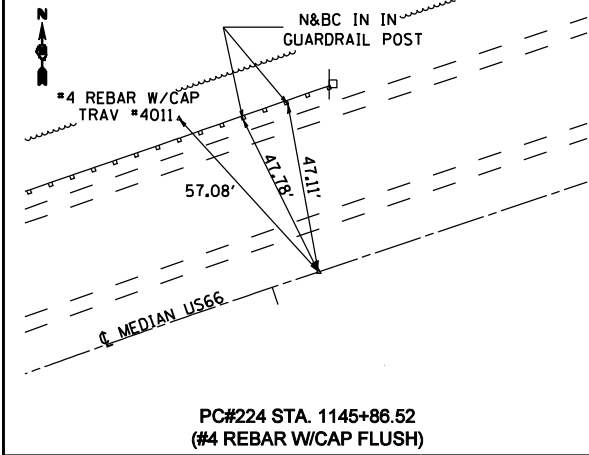
PT#223 STA. 1065+10.83
 (#4 REBAR W/CAP FLUSH)



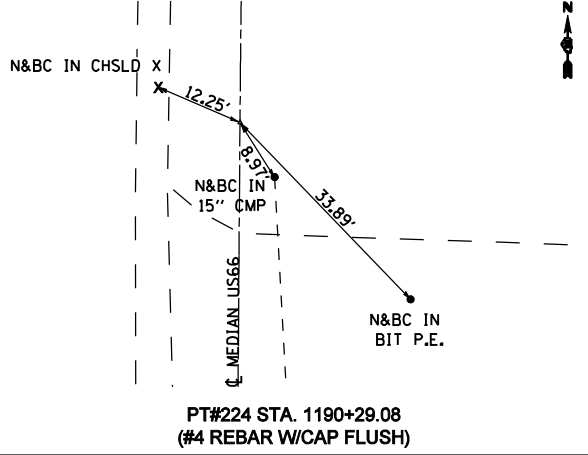
POT#1712 STA. 1091+65.33
 (#4 REBAR W/CAP FLUSH)



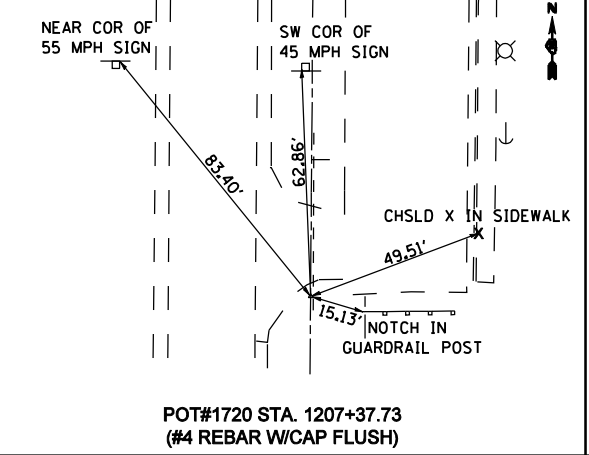
POT#1713 STA. 1116+53.67
 (#4 REBAR W/CAP FLUSH)



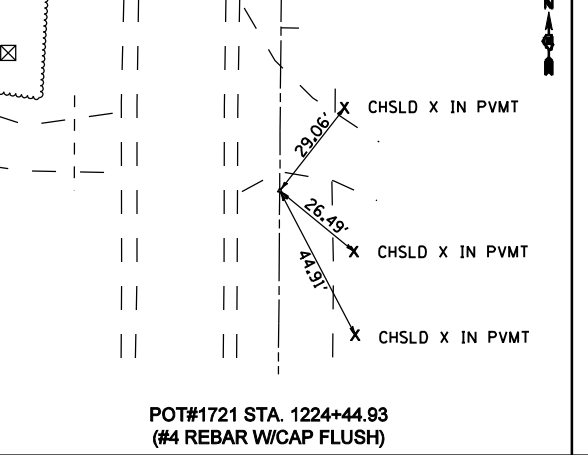
PC#224 STA. 1145+86.52
 (#4 REBAR W/CAP FLUSH)



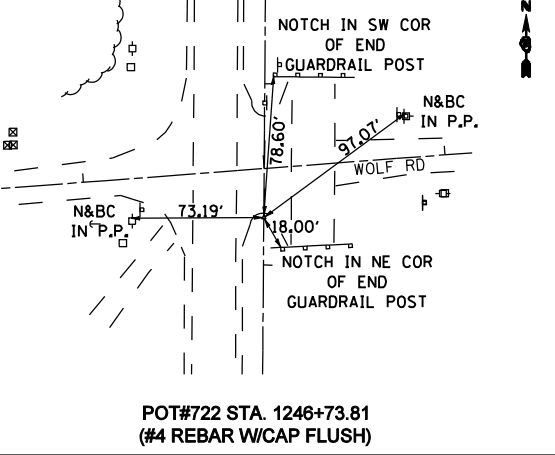
PT#224 STA. 1190+29.08
 (#4 REBAR W/CAP FLUSH)



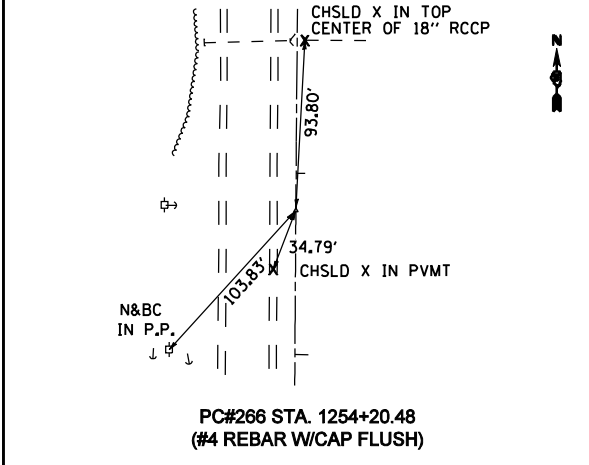
POT#1720 STA. 1207+37.73
 (#4 REBAR W/CAP FLUSH)



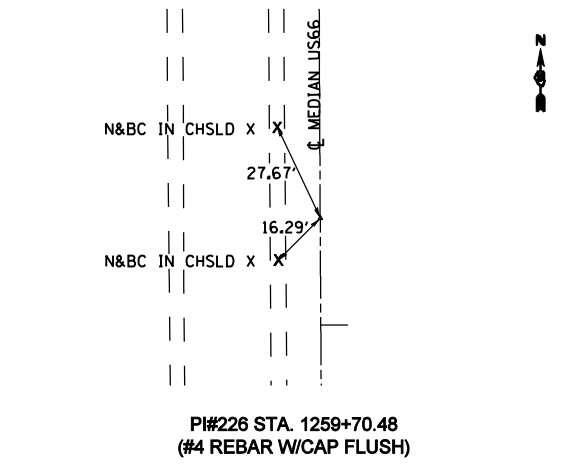
POT#1721 STA. 1224+44.93
 (#4 REBAR W/CAP FLUSH)



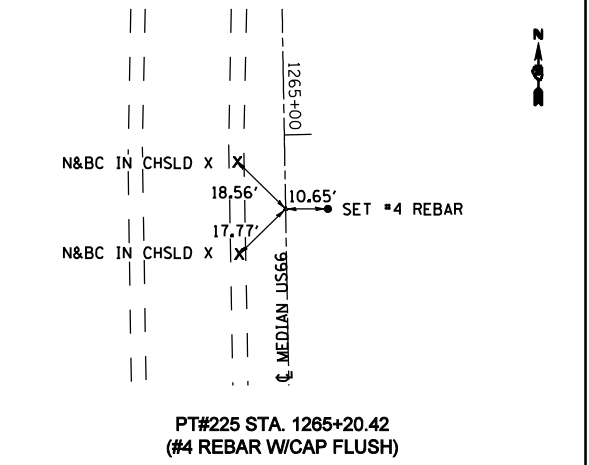
POT#722 STA. 1246+73.81
 (#4 REBAR W/CAP FLUSH)



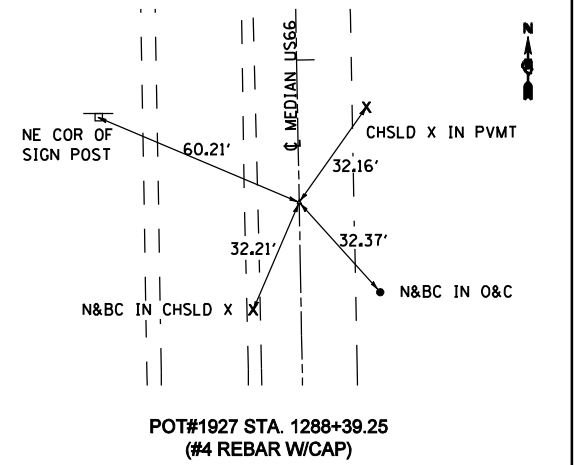
PC#266 STA. 1254+20.48
 (#4 REBAR W/CAP FLUSH)



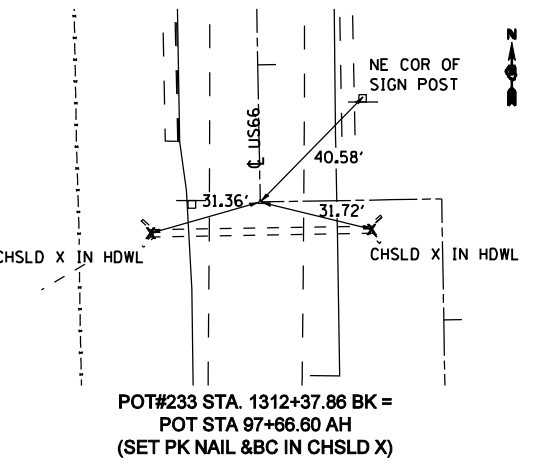
PI#226 STA. 1259+70.48
 (#4 REBAR W/CAP FLUSH)



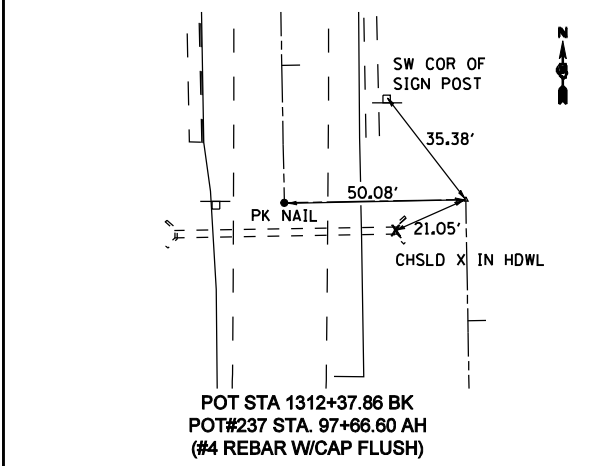
PT#225 STA. 1265+20.42
 (#4 REBAR W/CAP FLUSH)



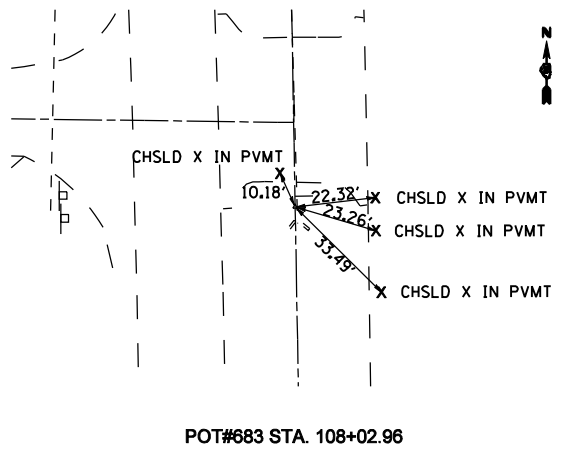
POT#1927 STA. 1288+39.25
 (#4 REBAR W/CAP)



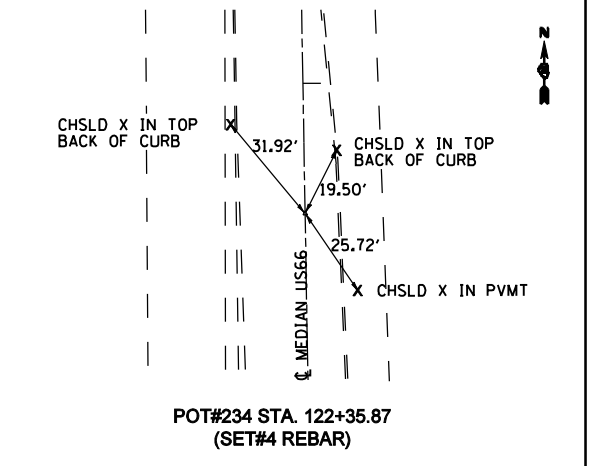
POT#233 STA. 1312+37.86 BK =
 POT STA 97+66.60 AH
 (SET PK NAIL & BC IN CHSLD X)



POT STA 1312+37.86 BK
 POT#237 STA. 97+66.60 AH
 (#4 REBAR W/CAP FLUSH)



POT#683 STA. 108+02.96



POT#234 STA. 122+35.87
 (SET#4 REBAR)

REVISIONS	
NAME	DATE

ILLINOIS DEPARTMENT OF TRANSPORTATION

CROSS TIES & BENCHMARKS

SCALE: VERT. DATE 2/8/2006
 HORIZ. DATE 2/8/2006

DRAWN BY
 CHECKED BY

•DGN-SPEC•
 •DATE-TIME•
 •REF01