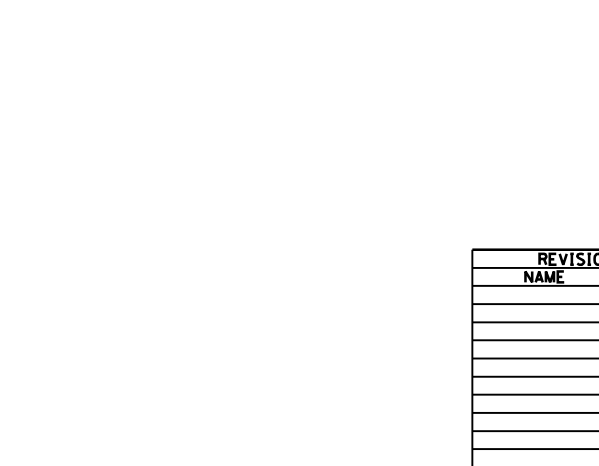
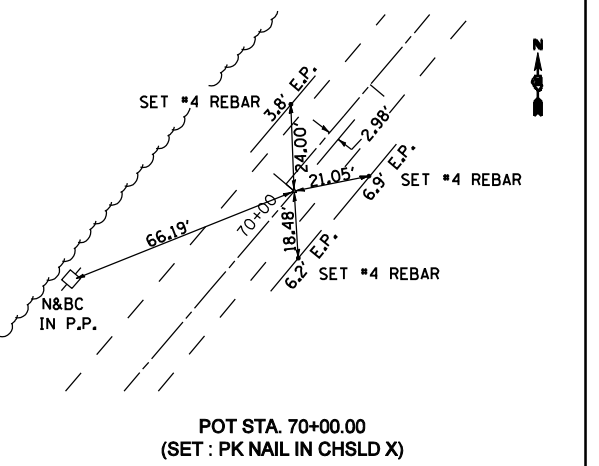
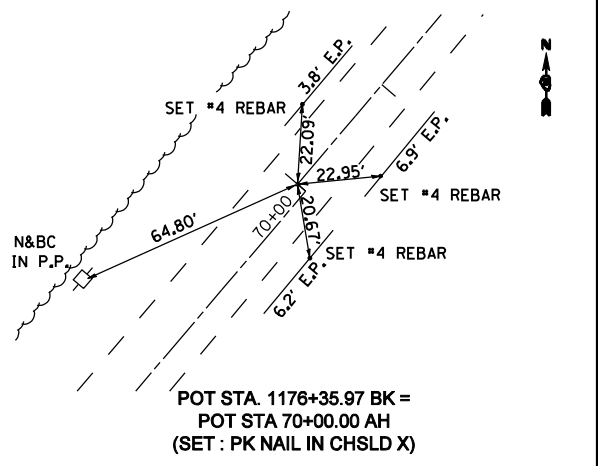
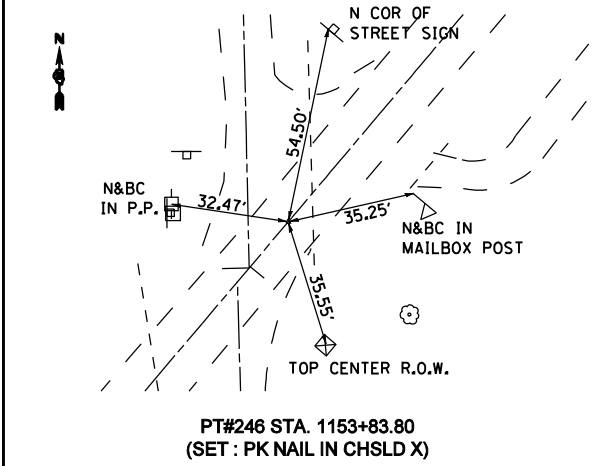
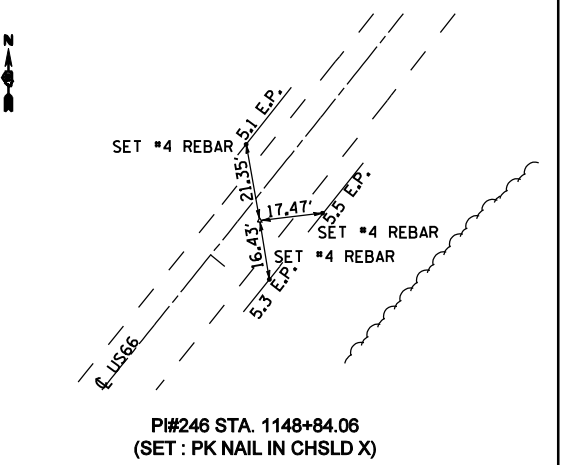
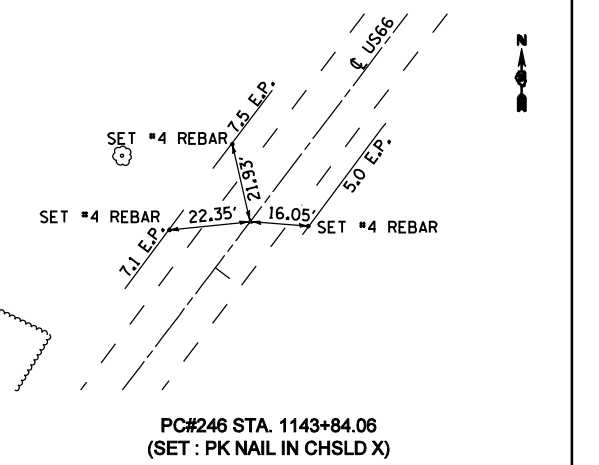
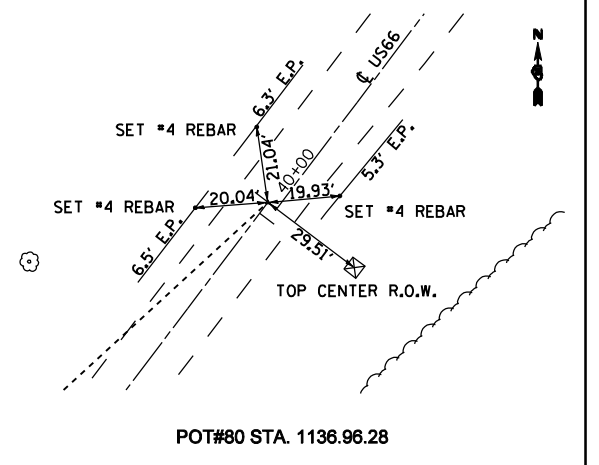
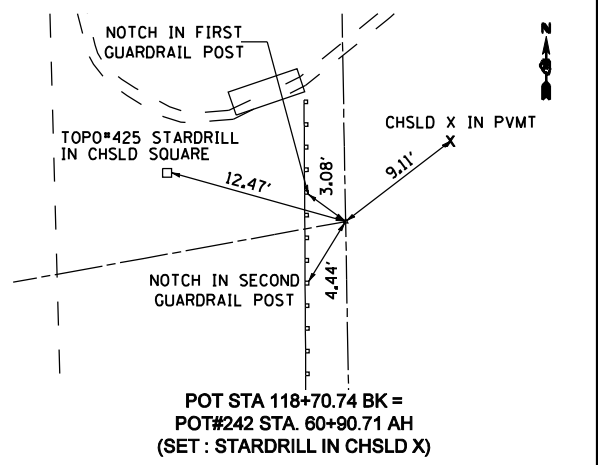
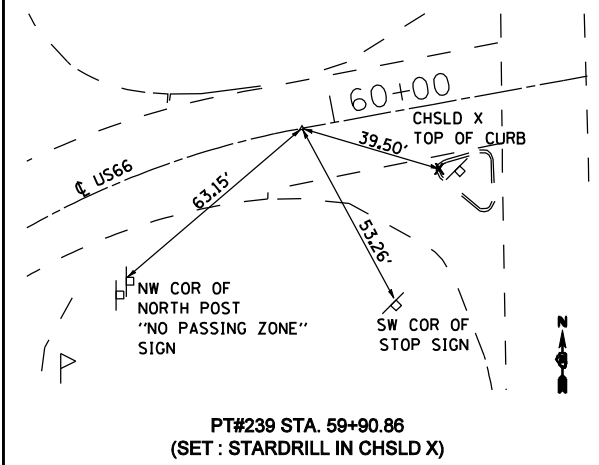
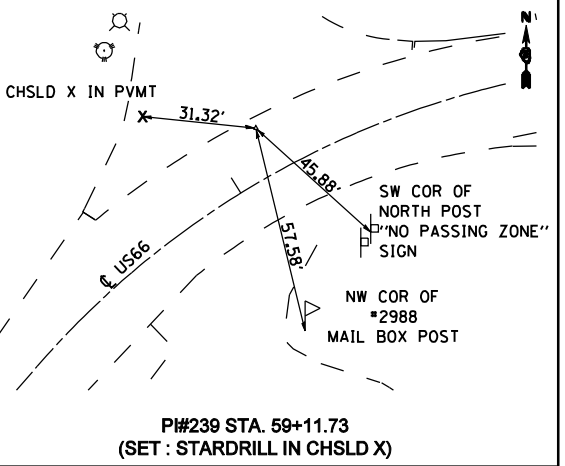
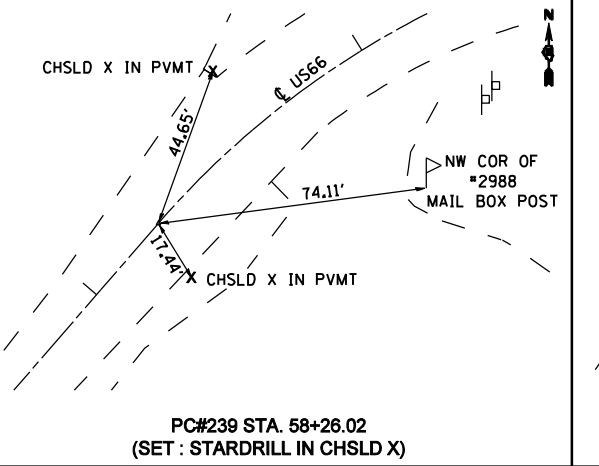
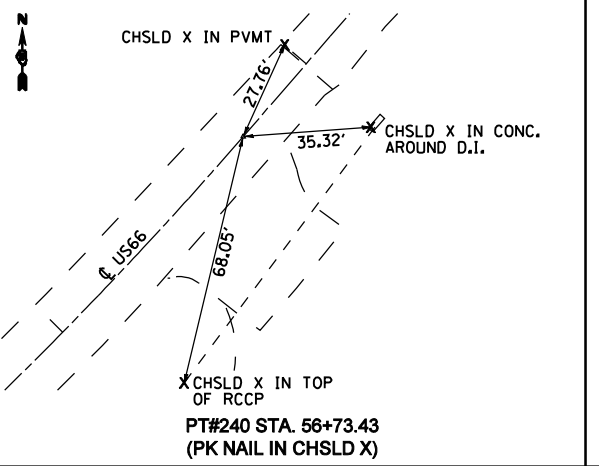
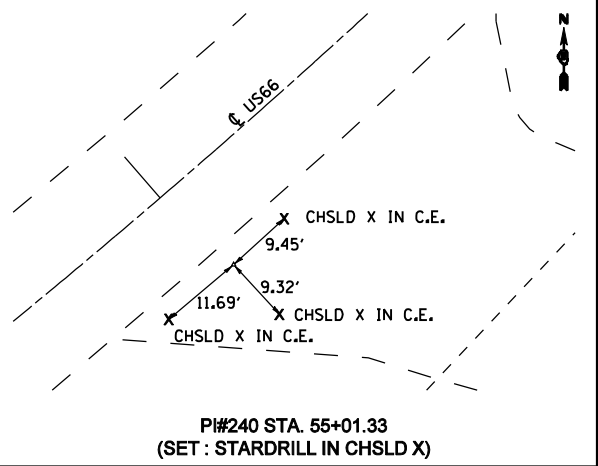
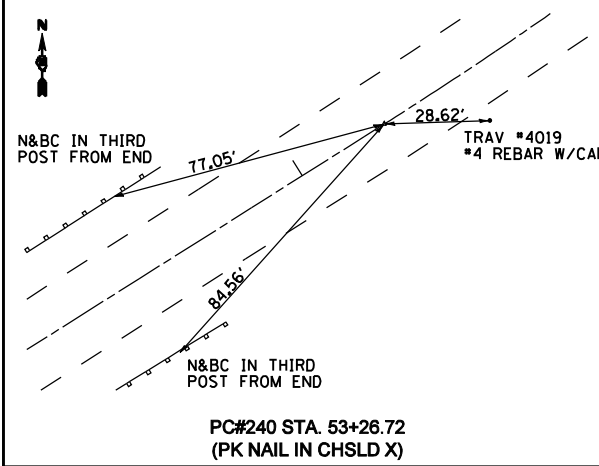
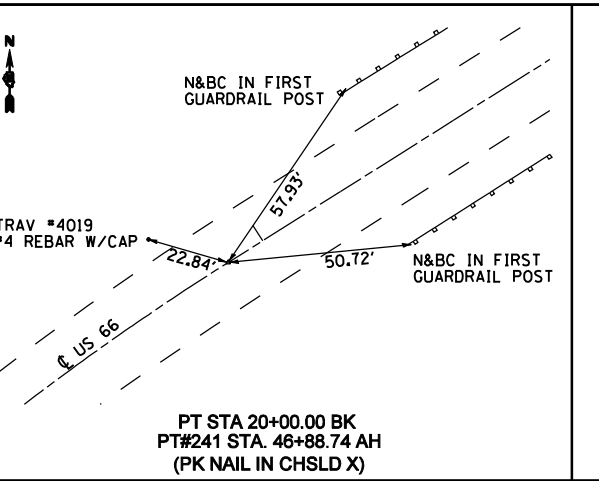
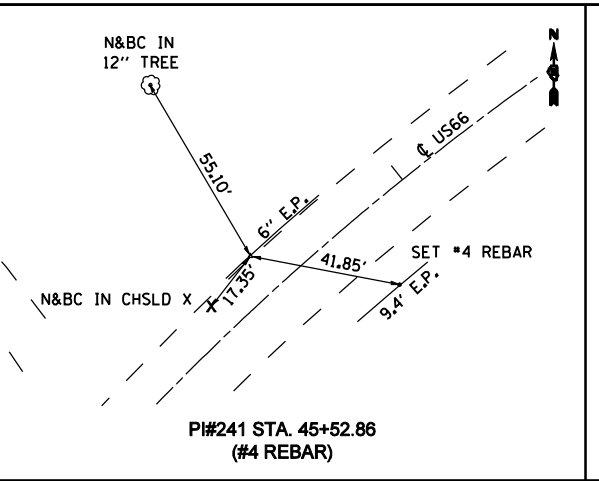
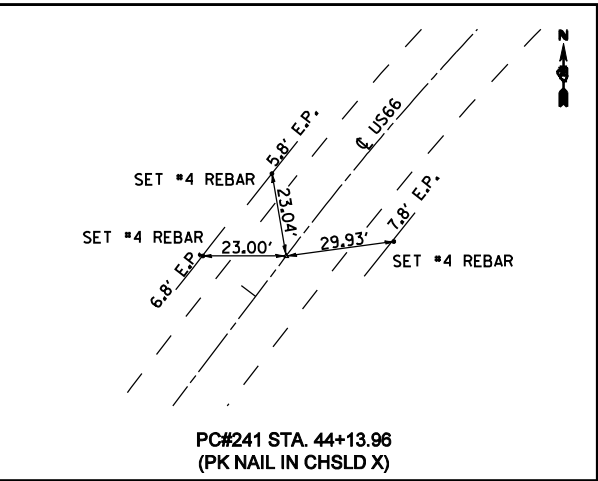
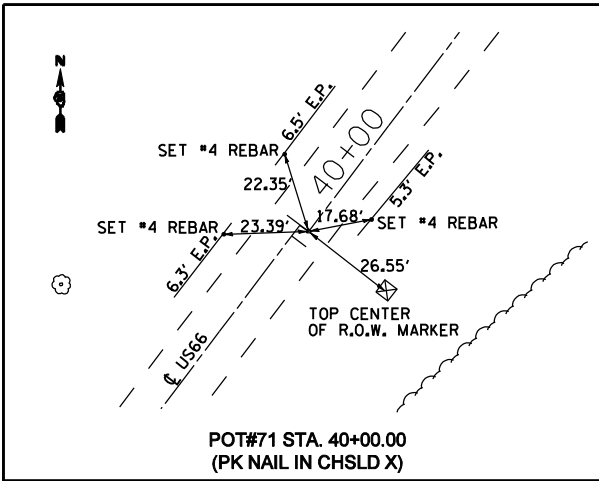


RTE.	SECTION	COUNTY	TOTAL SHEETS	SHEET NO.
•	RS,R	••	302	29

FED. ROAD DIST. NO. ILLINOIS FED. AID PROJECT
 • FAU 8239, FAS 1767, FAS 1766 & SBI 16 (OLD US 66)
 •• MONTGOMERY & MACOUPIN COUNTIES

CONTRACT NO. 72526



REVISIONS	
NAME	DATE

ILLINOIS DEPARTMENT OF TRANSPORTATION

CROSS TIES & BENCHMARKS

 SCALE: VERT. HORIZ. DATE: 2/8/2006
 DRAWN BY: _____ CHECKED BY: _____

DGN-SPEC
 DATE-TIME
 *REF01