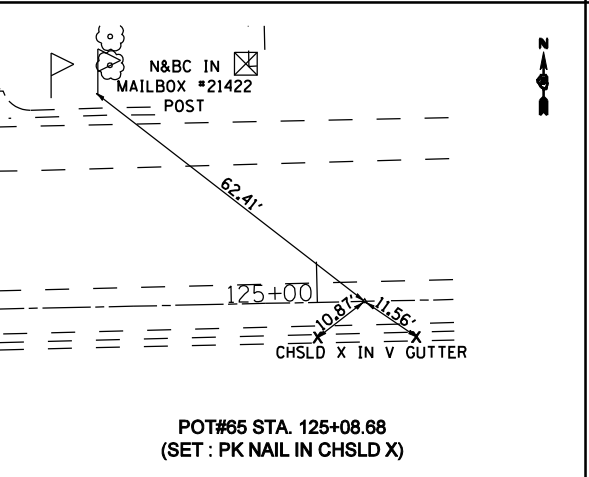
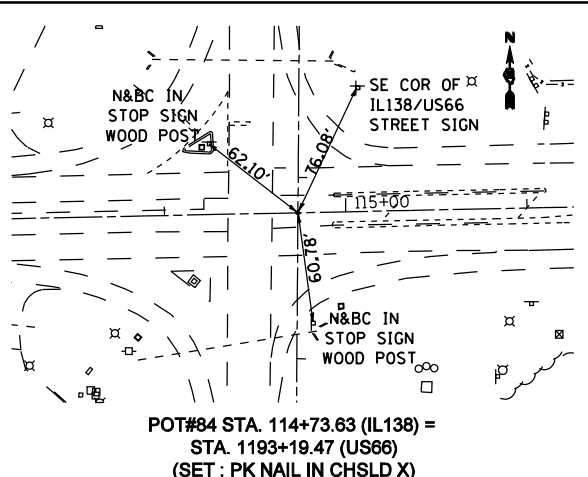
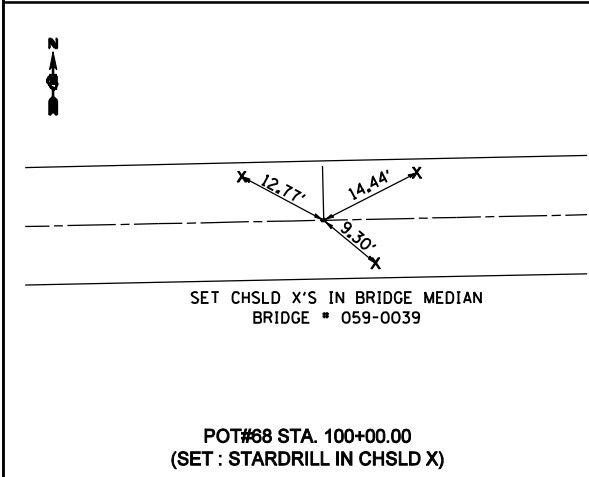
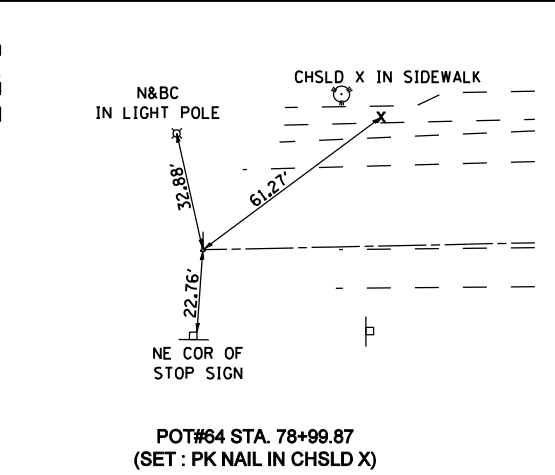
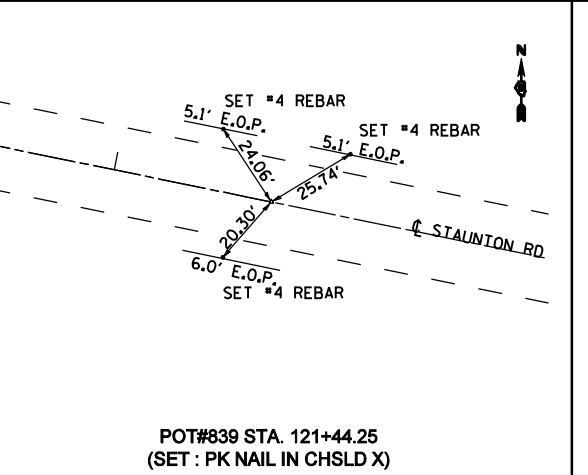
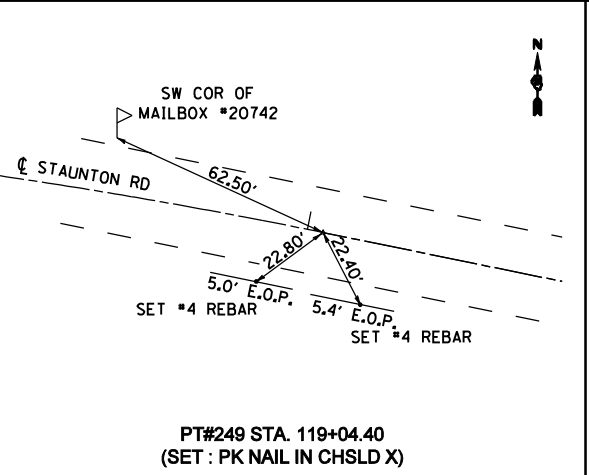
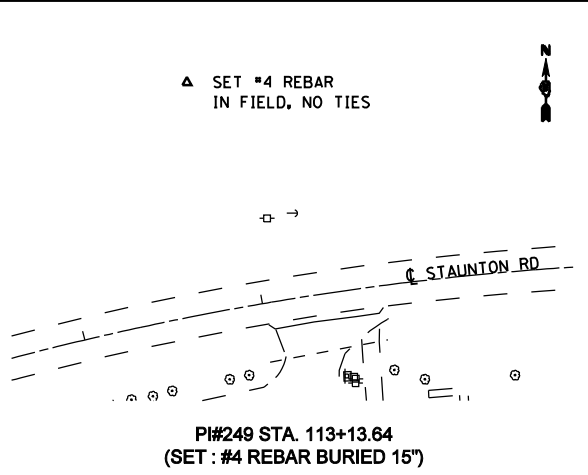
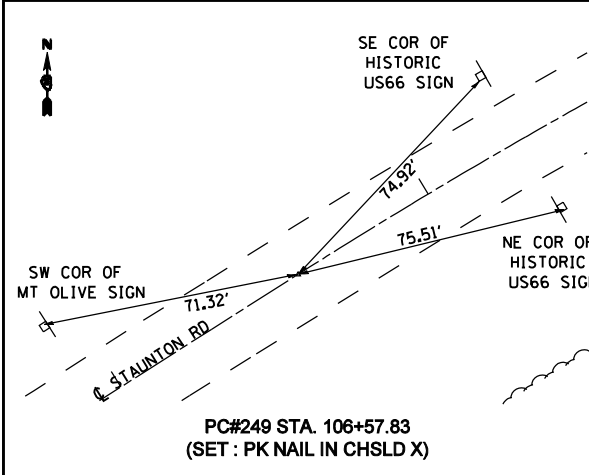
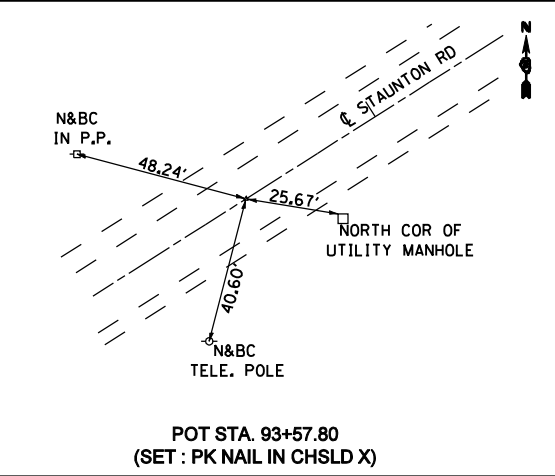
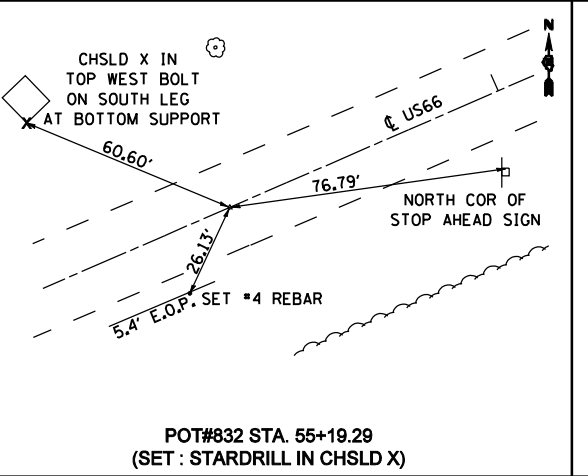
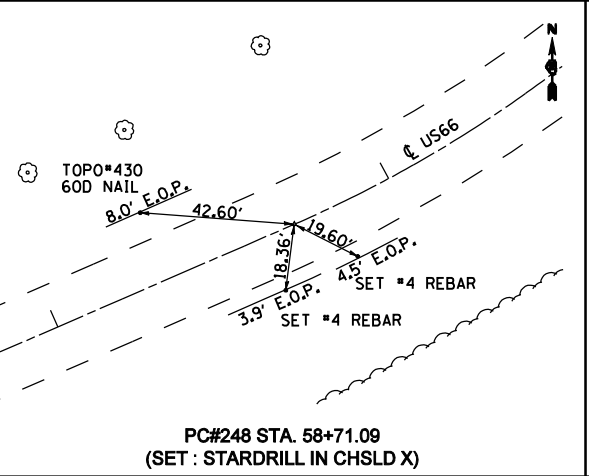
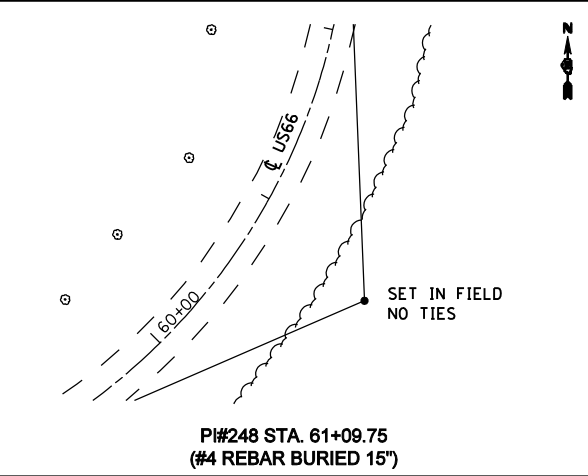
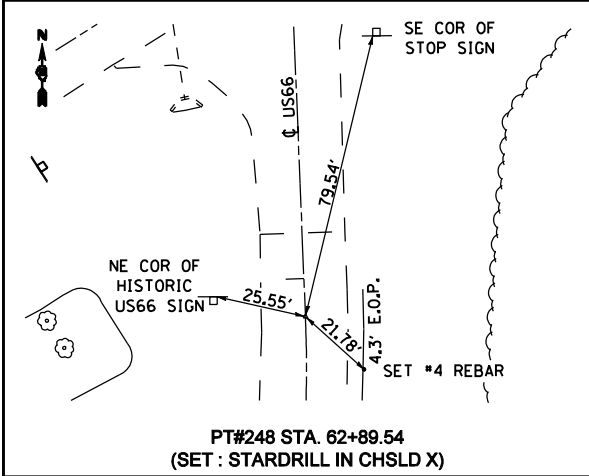
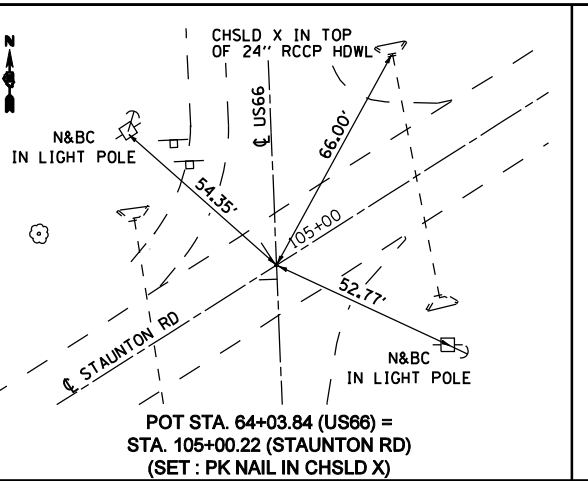
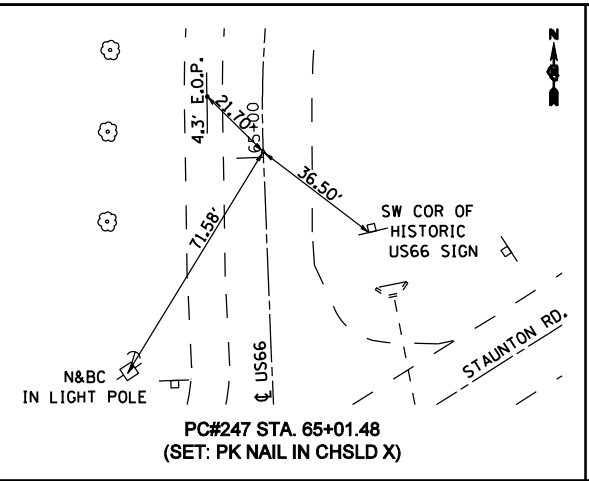
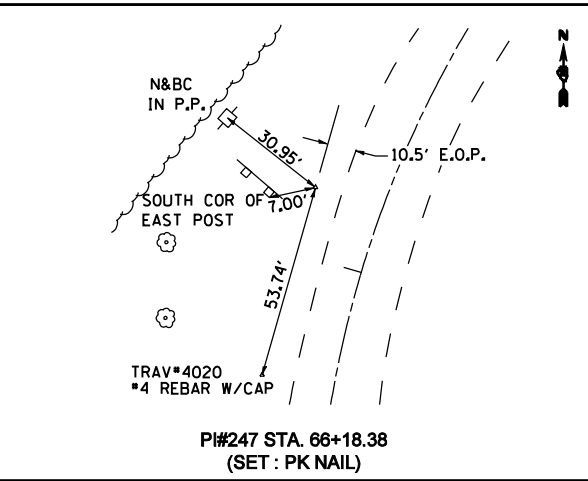
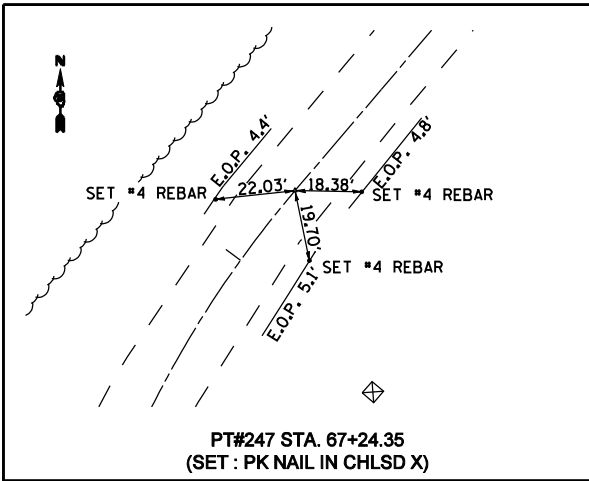


RTE.	SECTION	COUNTY	TOTAL SHEETS	SHEET NO.
•	RS,R	••	302	30

FED. ROAD DIST. NO. ILLINOIS FED. AID PROJECT  
 • FAU 8239, FAS 1767, FAS 1766 & SBI 16 (OLD US 66)  
 •• MONTGOMERY & MACOUPIN COUNTIES

**CONTRACT NO. 72526**



REVISIONS	
NAME	DATE

ILLINOIS DEPARTMENT OF TRANSPORTATION  
**CROSS TIES & BENCHMARKS**  
 SCALE: VERT. DATE 2/8/2006  
 HORIZ. DRAWN BY  
 CHECKED BY

\*DGN-SPEC\*  
 \*DATE-TIME\*  
 \*REF01