

RTE.	SECTION	COUNTY	TOTAL SHEETS	SHEET NO.
*	RS,R	**	302	31

FED. ROAD DIST. NO. ILLINOIS FED. AID PROJECT
 • FAU 8239, FAS 1767, FAS 1766 & SBI 16 (OLD US 66)
 ** MONTGOMERY & MACOUPIN COUNTIES

CONTRACT NO. 72526

POT STA 50+00.00 =
 STA 1297+00.00 (US 66), 27.0' RT
 NO TIES AVAILABLE
 N 865782.2262, E 2412718.5951

PC STA 50+82.60 =
 STA 1297+82.60 (US 66), 27.0' RT
 NO TIES AVAILABLE
 N 865699.6401, E 2414720.0913

PT STA 55+30.95 =
 STA 1302+30.84 (US 66), 18.51' RT
 NO TIES AVAILABLE
 N 865251.6281, E 2414736.6952

PC STA 57+95.87 =
 STA 1304+95.57 (US 66), 8.49' RT
 NO TIES AVAILABLE
 N 864987.1195, E 2414751.5162

PT STA 62+44.22 =
 STA 1309+43.81 (US 66)
 NO TIES AVAILABLE
 N 864539.1056, E 2414768.1201

PC STA 71+01.30 =
 STA 103+29.84 (US 66), 49.71' RT
 NO TIES AVAILABE
 N 863682.1617, E 2414783.6450

PRC STA 72+49.67 =
 STA 104+77.90 (US 66), 44.73' RT
 NO TIES AVAILABLE
 N 863534.0134, E 2414791.2256

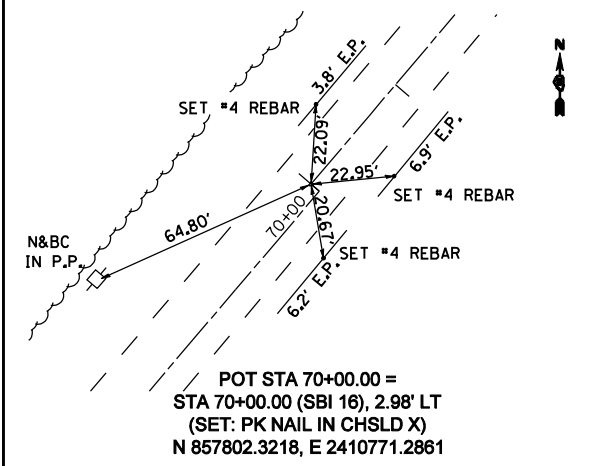
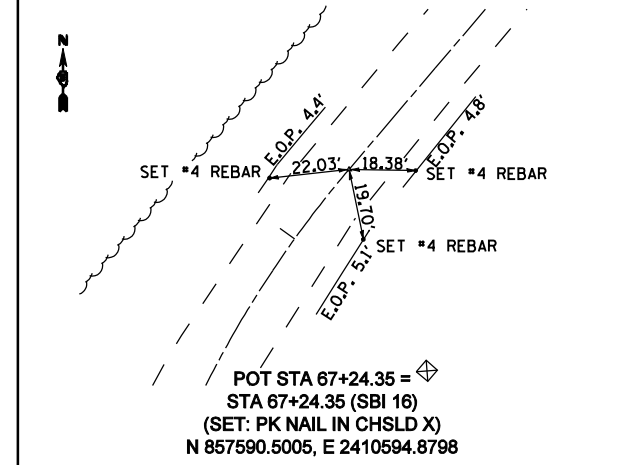
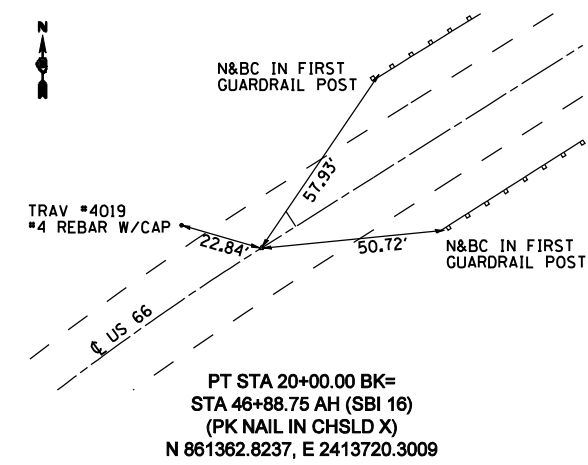
PT STA 76+32.05 =
 STA 108+60.00 (US 66), 32.0' RT
 NO TIES AVAILABLE
 N 863152.1960, E 2414810.6521

POT STA 76+72.05 =
 STA 109+00.00 (US 66), 32.0' RT
 NO TIES AVAILABLE
 N 863112.2018, 2414811.3536

POT STA 10+62.79 =
 STA 1139+44.63 SBI 16)
 NO TIES AVAILABLE
 N 860651.2555, E 2413117.2394

PC STA 17+28.76 =
 STA 44+17.51 (SBI 16), 0.01' RT
 NO TIES AVAILABLE
 N 861180.6952, E 2413521.2391

PI STA 18+65.83 =
 STA 45+53.13 (SBI 16), 12.23' LT
 NO TIES AVAILABLE
 N 861289.6632, E 2413604.3893



POT STA 70+00.00 =
 STA 70+00.00 (SBI 16), 2.98' LT
 (SET: PK NAIL IN CHSLD X)
 N 857802.3218, E 2410771.2861

REVISIONS	
NAME	DATE

ILLINOIS DEPARTMENT OF TRANSPORTATION

CROSS TIES & BENCHMARKS

SCALE: VERT. DATE 2/8/2006
 HORIZ. DATE 2/8/2006

DRAWN BY
 CHECKED BY

DGN-SPEC
 DATE-TIME
 *REF01