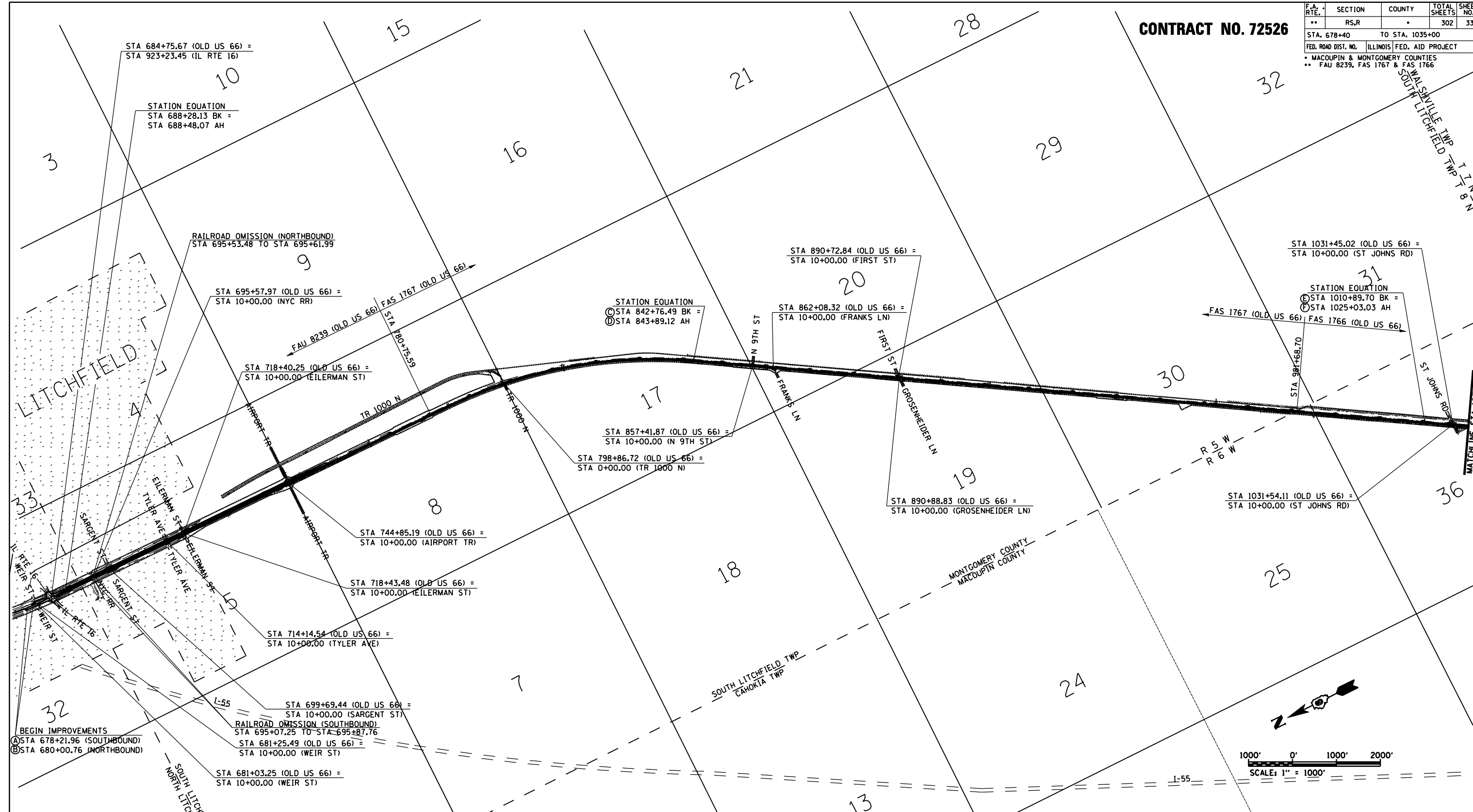


CONTRACT NO. 72526

F.A. RTE.	SECTION	COUNTY	TOTAL SHEETS	SHEET NO.
**	RS,R	*	302	33
STA. 678+40		TO STA. 1035+00		
FED. ROAD DIST. NO.		ILLINOIS FED. AID PROJECT		
* MACOUPIN & MONTGOMERY COUNTIES				
** FAU 8239, FAS 1767 & FAS 1766				



BEGIN IMPROVEMENTS
 (A) STA 678+21.96 (SOUTHBOUND)
 (B) STA 680+00.76 (NORTHBOUND)

RAILROAD OMISSION (SOUTHBOUND)
 STA 695+07.25 TO STA 695+87.76
 STA 681+25.49 (OLD US 66) = STA 10+00.00 (WEIR ST)

STA 681+03.25 (OLD US 66) = STA 10+00.00 (WEIR ST)

STA 699+69.44 (OLD US 66) = STA 10+00.00 (SARGENT ST)

STA 714+14.54 (OLD US 66) = STA 10+00.00 (TYLER AVE)

STA 718+43.48 (OLD US 66) = STA 10+00.00 (EILERMAN ST)

STA 744+85.19 (OLD US 66) = STA 10+00.00 (AIRPORT TR)

STA 798+86.72 (OLD US 66) = STA 0+00.00 (TR 1000 N)

STA 857+41.87 (OLD US 66) = STA 10+00.00 (N 9TH ST)

STA 862+08.32 (OLD US 66) = STA 10+00.00 (FRANKS LN)

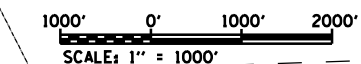
STA 890+88.83 (OLD US 66) = STA 10+00.00 (GROSENHEIDER LN)

STA 890+72.84 (OLD US 66) = STA 10+00.00 (FIRST ST)

STA 1031+45.02 (OLD US 66) = STA 10+00.00 (ST JOHNS RD)

STA 1010+89.70 BK = STA 1025+03.03 AH

STA 984+68.70



SCHEDULE OF PAGE NUMBERS

STATION	TYPICAL SECTION	PLAN & PROFILE	PAVEMENT MARKING	STORM WATER POLL. & PREV.	CROSS-SECTIONS
OLD US 66					
(A) 678+21.96 (SB)	17	45	105	119	166
(B) 680+00.76 (NB)	24	45	105	119	166
(C) 842+76.49 BK	17	56	.	122	196
(D) 843+89.12 AHD	17	56	.	122	197
(E) 1010+89.70 BK	17	67	.	128	226
(F) 1025+03.03 AHD	17	67	.	128	227

NOTE: ALL BASELINES SHOWN ARE SURVEY BASELINES UNLESS OTHERWISE NOTED.

REVISIONS	
NAME	DATE

ILLINOIS DEPARTMENT OF TRANSPORTATION

SITE PLAN (SHEET INDEX)

SCALE: VERT. _____
 HORIZ. _____
 DATE 2/8/2006

DRAWN BY TJD
 CHECKED BY AWM