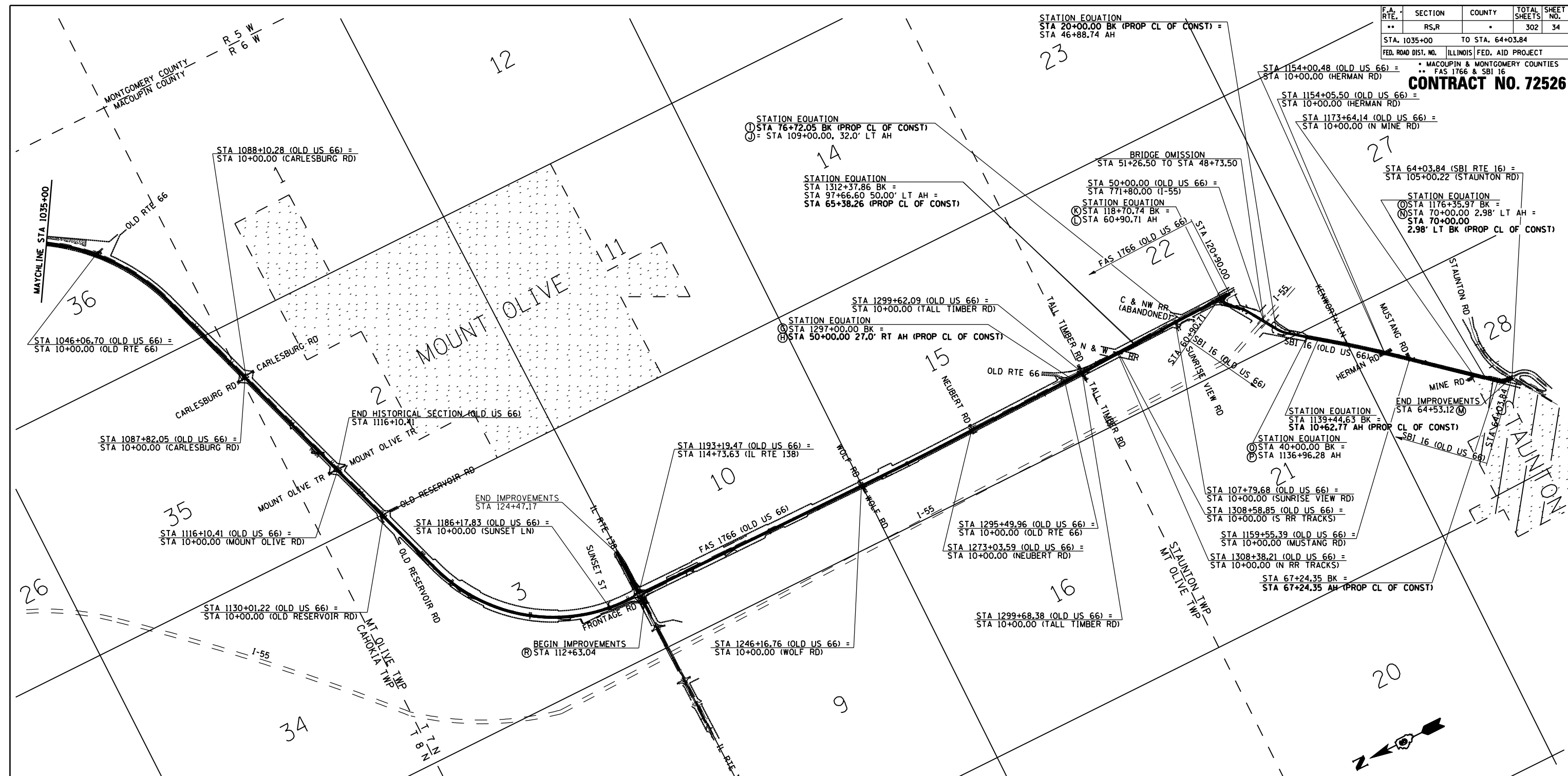


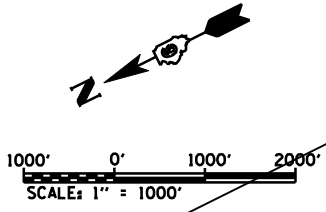
F.A. RTE.	SECTION	COUNTY	TOTAL SHEETS	SHEET NO.
**	RS,R	*	302	34
STA. 1035+00		TO STA. 64+03.84		
FED. ROAD DIST. NO.		ILLINOIS FED. AID PROJECT		
		* MACOUPIN & MONTGOMERY COUNTIES		
		** FAS 1766 & SBI 16		

CONTRACT NO. 72526



SCHEDULE OF PAGE NUMBERS

	STATION	TYPICAL SECTION	PLAN & PROFILE	PAVEMENT MARKING	STORM WATER POLL. & PREV.	CROSS-SECTIONS
	OLD US 66					
(G)	1297+00.00 BK	19	85	111	134	274
(H)	50+00 AHD	19	85	111	134	275
(I)	76+72.05 BK	21	87	112	135	280
(J)	109+00.00 AHD	21	87	112	135	281
(K)	118+70.74 BK	21	87	112	135	282
(L)	60+90.71 AHD	22	93	112	138	295
	SBI 16					
(M)	64+53.12	23	88	113	136	283
(N)	70+00.00 AHD	23	88	113	136	283
(O)	1176+35.97 BK	23	88	113	136	291
(P)	1136+96.28 AHD	23	91	114	137	284
(Q)	40+00.00 BK	23	92	115	138	292
(R)	60+90.71	22	93	112	138	295
	IL 138					
(S)	112+63.04 TO 124+47.17	26	94	115	139	296-302



REVISIONS	
NAME	DATE

ILLINOIS DEPARTMENT OF TRANSPORTATION

SITE PLAN (SHEET INDEX)

SCALE: VERT. HORIZ. DATE: 2/8/2006

DRAWN BY TJD
CHECKED BY AWM

NOTE: ALL BASELINES SHOWN ARE SURVEY BASELINES UNLESS OTHERWISE NOTED.