

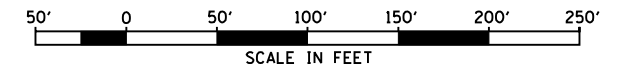
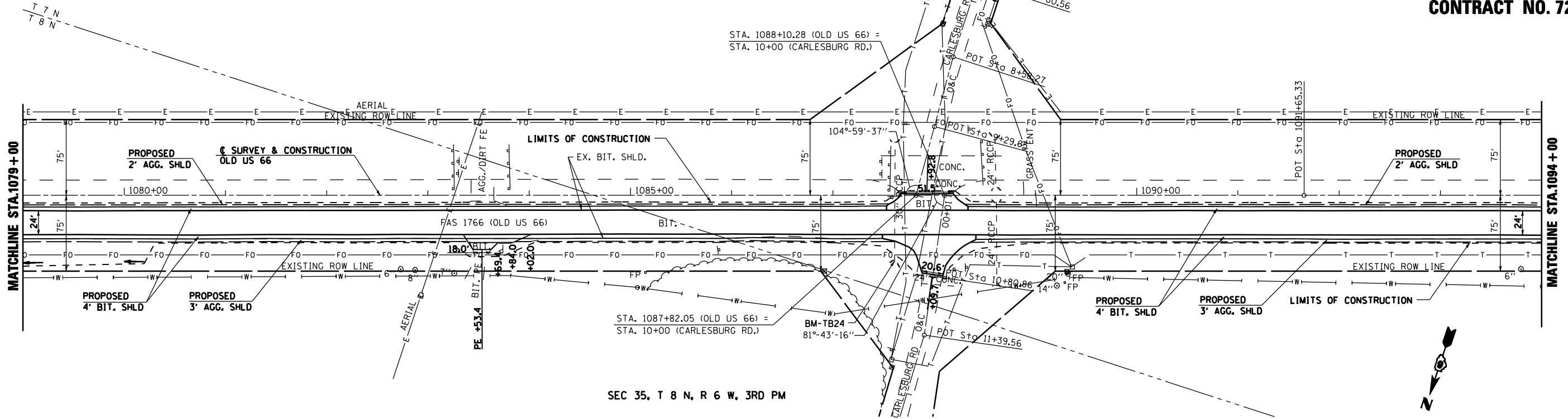
F.A.S. RTE.	SECTION	COUNTY	TOTAL SHEETS	SHEET NO.
1766	RS, R	*	302	71
STA. 1079+00		TO STA. 1094+00		
FED. ROAD DIST. NO.		ILLINOIS FED. AID PROJECT		
* MACOUPIN & MONTGOMERY COUNTIES				
<b>CONTRACT NO. 72526</b>				

SEC 2, T 7 N, R 6 W, 3RD PM

③

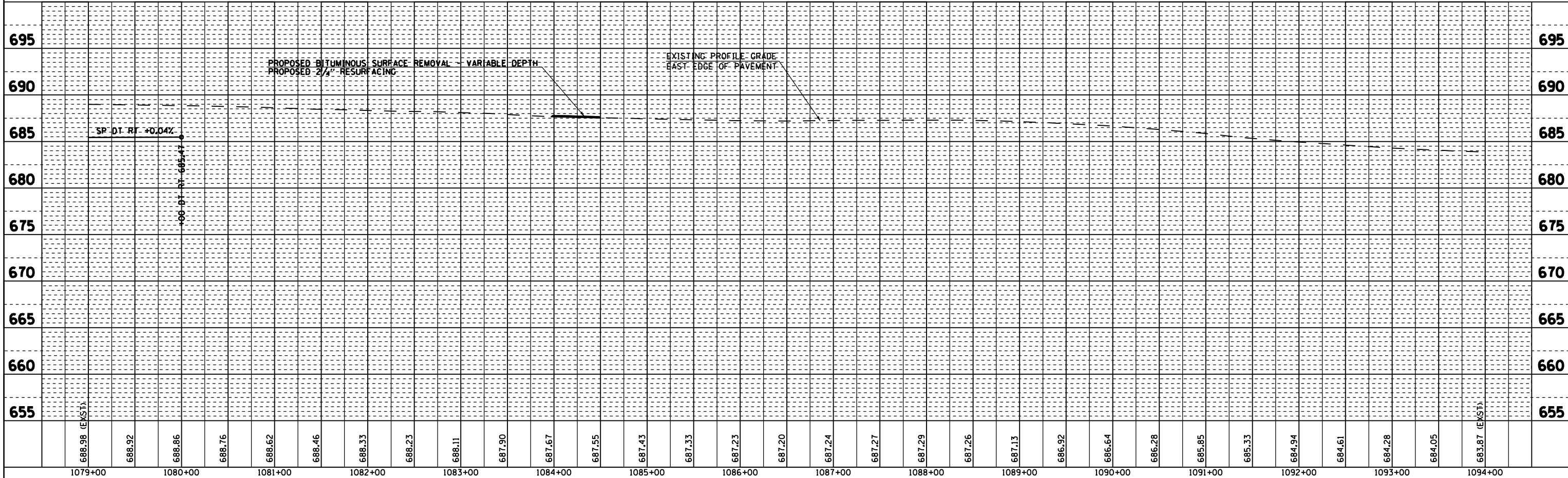
STA. 1088+10.28 (OLD US 66) =  
STA. 10+00 (CARLESBURG RD.)

SEC 35, T 8 N, R 6 W, 3RD PM



PLAN	SURVEYED	BY	DATE
	PLOTTED		
	NOTE BOOK		
	NO. OF WAY CHECKED		
	NO. OF FILE CHECKED		
	DATE		

PROFILE	SURVEYED	BY	DATE
	PLOTTED		
	NOTE BOOK		
	NO. OF WAY CHECKED		
	NO. OF FILE CHECKED		
	DATE		



\*DGN-SPEC\*  
\*DATE-TIME\*  
\*REF01