

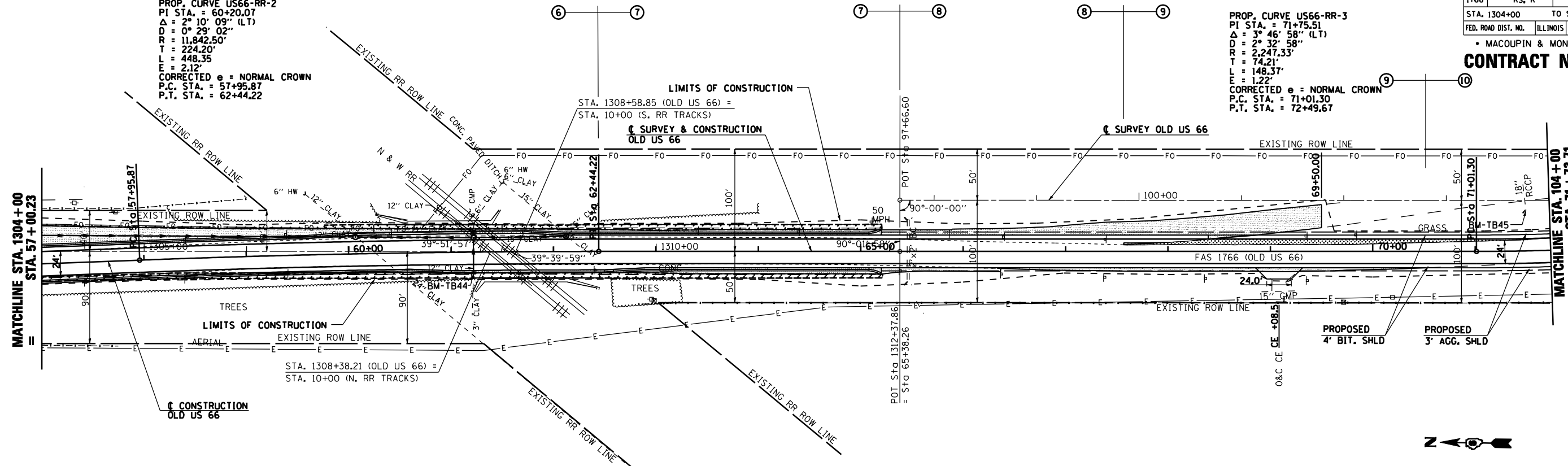
F.A.S. RTE.	SECTION	COUNTY	TOTAL SHEETS	SHEET NO.
1766	RS, R	*	302	86
STA. 1304+00 TO STA. 104+00				
FED. ROAD DIST. NO.			ILLINOIS FED. AID PROJECT	
* MACOUPIN & MONTGOMERY COUNTIES				

**CONTRACT NO. 72526**

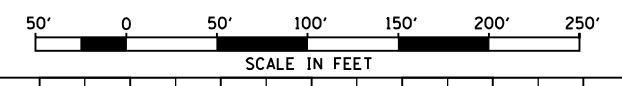
SEC 22, T 7 N, R 6 W, 3RD PM

PROP. CURVE US66-RR-2  
 PI STA. = 60+20.07  
 $\Delta = 2^\circ 10' 09''$  (LT)  
 $D = 0^\circ 29' 02''$   
 $R = 11,842.50'$   
 $T = 224.20'$   
 $L = 448.35'$   
 $E = 2.12'$   
 CORRECTED  $e =$  NORMAL CROWN  
 P.C. STA. = 57+95.87  
 P.T. STA. = 62+44.22

PROP. CURVE US66-RR-3  
 PI STA. = 71+75.51  
 $\Delta = 3^\circ 46' 58''$  (LT)  
 $D = 2^\circ 32' 58''$   
 $R = 2,247.33'$   
 $T = 74.21'$   
 $L = 148.37'$   
 $E = 1.22'$   
 CORRECTED  $e =$  NORMAL CROWN  
 P.C. STA. = 71+01.30  
 P.T. STA. = 72+49.67

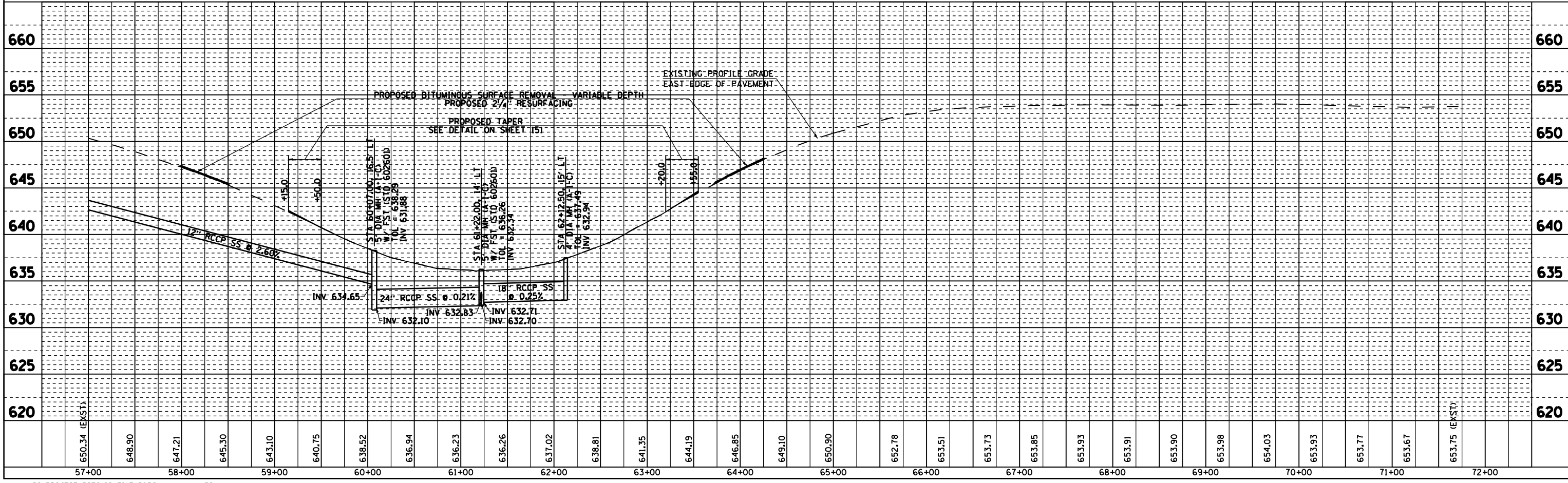


NOTE: SEE PAVEMENT DETAILS AT RAILROAD SUBWAY ON SHEETS 101-102 AND STORM SEWER DETAILS AT RAILROAD SUBWAY ON SHEET 103 FOR PROPOSED IMPROVEMENTS AT RAILROAD SUBWAY



PLAN	SURVEYED	BY	DATE
NO. _____	PLotted		
	Checked		
	By		
	Noted		
	Structure		
	Notations		
	Checked		
	By		
	Noted		
	Structure		
	Notations		

PROFILE	SURVEYED	BY	DATE
NO. _____	Plotted		
	Checked		
	By		
	Noted		
	Structure		
	Notations		



\*DGN-SPEC\*  
 \*DATE-TIME\*  
 \*REF01