

SEC 28, T 7 N, R 6 W, 3RD PM

EXIST. CURVE 248
 P.I. STA. 61+09.75
 $\Delta = 68^{\circ}50'56''$ (LT)
 $D = 16^{\circ}27'12''$
 $R = 348.23'$
 $T = 238.66'$
 $L = 418.45'$
 $E = 73.93'$
 P.C. STA. 58+71.09
 P.T. STA. 62+89.54

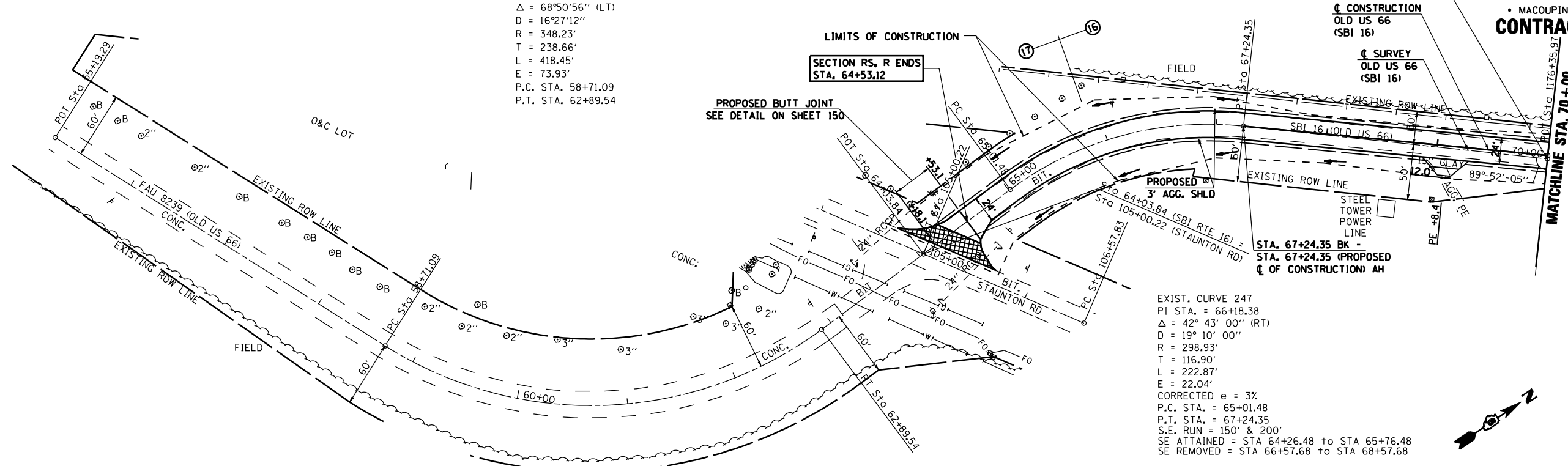
STA. 1176+35.97 BK =
 STA. 70+00.00 2.98' LT AH (PROPOSED \O OF CONSTRUCTION) =
 STA. 70+00.00 2.98' LT AH

S.B.I. RTE.	SECTION	COUNTY	TOTAL SHEETS	SHEET NO.
16	RS, R	*	302	88

STA. 55+00 TO STA. 70+00
 ILLINOIS FED. AID PROJECT

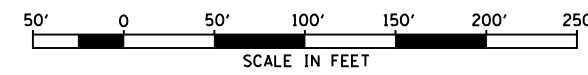
MACOUPIN & MONTGOMERY COUNTIES
CONTRACT NO. 72526

PLAN	SURVEYED	BY	DATE
	PLOTTED		
	CHECKED		
	BY		
	NO. OF WAY CHECKED		
	NO.		
	CADD FILE NAME		

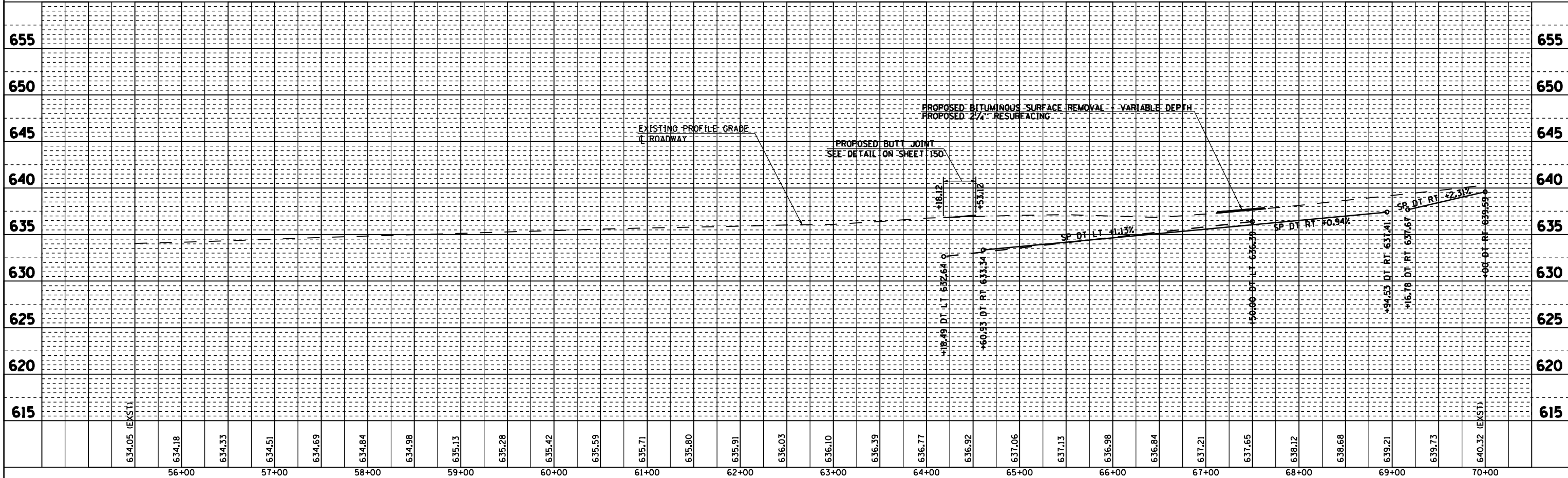


EXIST. CURVE 247
 P.I. STA. = 66+18.38
 $\Delta = 42^{\circ} 43' 00''$ (RT)
 $D = 19^{\circ} 10' 00''$
 $R = 298.93'$
 $T = 116.90'$
 $L = 222.87'$
 $E = 22.04'$
 CORRECTED $e = 3\%$
 P.C. STA. = 65+01.48
 P.T. STA. = 67+24.35
 S.E. RUN = 150' & 200'
 SE ATTAINED = STA 64+26.48 to STA 65+76.48
 SE REMOVED = STA 66+57.68 to STA 68+57.68

NOTE: PROPOSED REALIGNMENT STA 67+24.35 TO STA 70+00.00



PROFILE	SURVEYED	BY	DATE
	PLOTTED		
	CHECKED		
	BY		
	NO. OF WAY CHECKED		
	NO.		
	STRUCTURE NOTATIONS CHRD		



DGN-SPEC
 DATE-TIME
 *REF01