

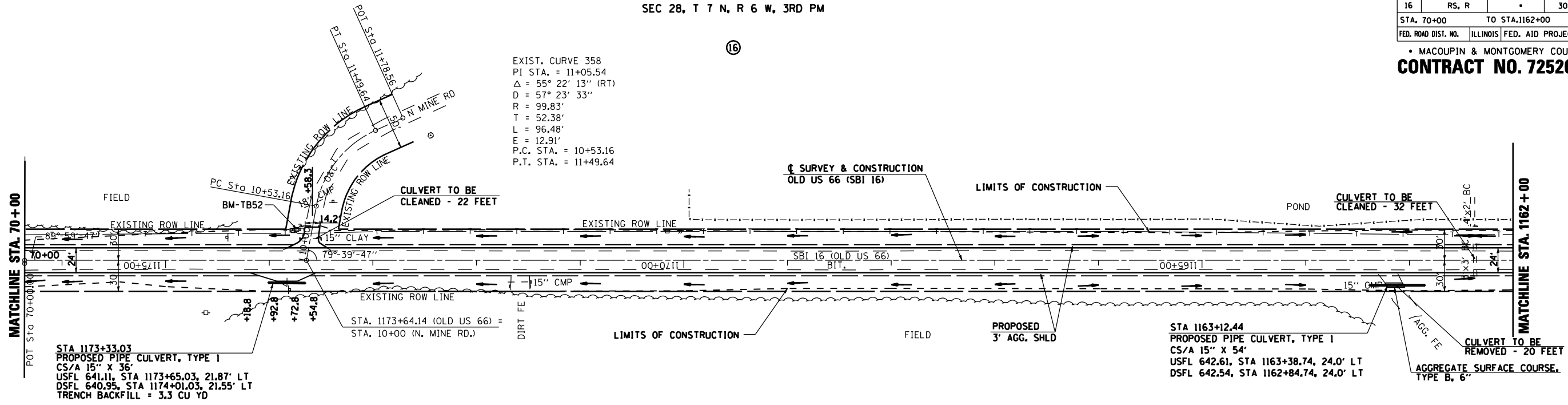
SEC 28, T 7 N, R 6 W, 3RD PM

(16)

S.B.I. RTE.	SECTION	COUNTY	TOTAL SHEETS	SHEET NO.
16	RS, R	.	302	89
STA. 70+00		TO STA. 1162+00		
FED. ROAD DIST. NO.	ILLINOIS	FED. AID PROJECT		

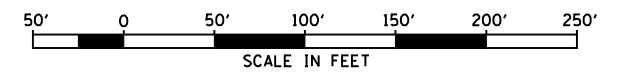
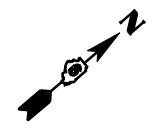
• MACOUPIN & MONTGOMERY COUNTIES  
**CONTRACT NO. 72526**

EXIST. CURVE 358  
 PI STA. = 11+05.54  
 $\Delta = 55^\circ 22' 13''$  (RT)  
 $D = 57^\circ 23' 33''$   
 $R = 99.83'$   
 $T = 52.38'$   
 $L = 96.48'$   
 $E = 12.91'$   
 P.C. STA. = 10+53.16  
 P.T. STA. = 11+49.64



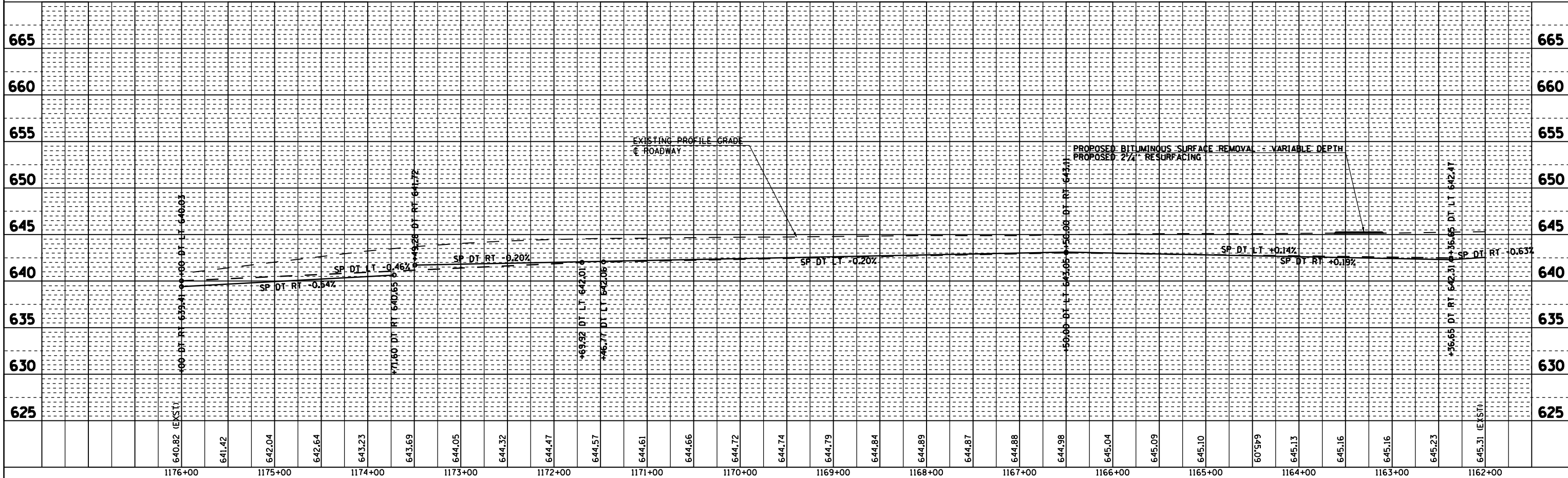
STA 1173+33.03  
 PROPOSED PIPE CULVERT, TYPE I  
 CS/A 15" X 36"  
 USFL 641.11, STA 1173+65.03, 21.87' LT  
 DSFL 640.95, STA 1174+01.03, 21.55' LT  
 TRENCH BACKFILL = 3.3 CU YD

STA 1163+12.44  
 PROPOSED PIPE CULVERT, TYPE I  
 CS/A 15" X 54"  
 USFL 642.61, STA 1163+38.74, 24.0' LT  
 DSFL 642.54, STA 1162+84.74, 24.0' LT



PLAN	DATE
BY	
DATE	
BY	
DATE	
BY	
DATE	

PROFILE	DATE
BY	
DATE	
BY	
DATE	
BY	
DATE	



\*DGN-SPEC\*  
 \*DATE-TIME\*  
 \*REF01