

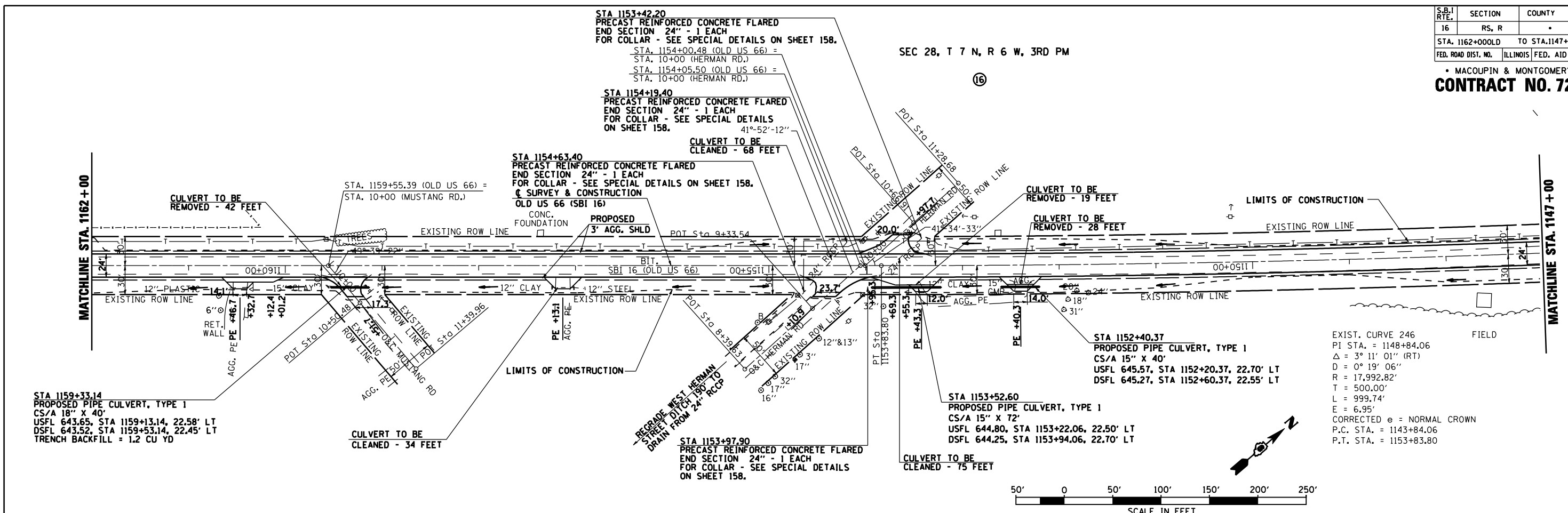
S.B.I. RTE.	SECTION	COUNTY	TOTAL SHEETS	SHEET NO.
16	RS, R		302	90

STA. 1162+00 OLD TO STA. 1147+00
 FED. ROAD DIST. NO. ILLINOIS FED. AID PROJECT
 • MACOUPIN & MONTGOMERY COUNTIES
CONTRACT NO. 72526

SEC 28, T 7 N, R 6 W, 3RD PM

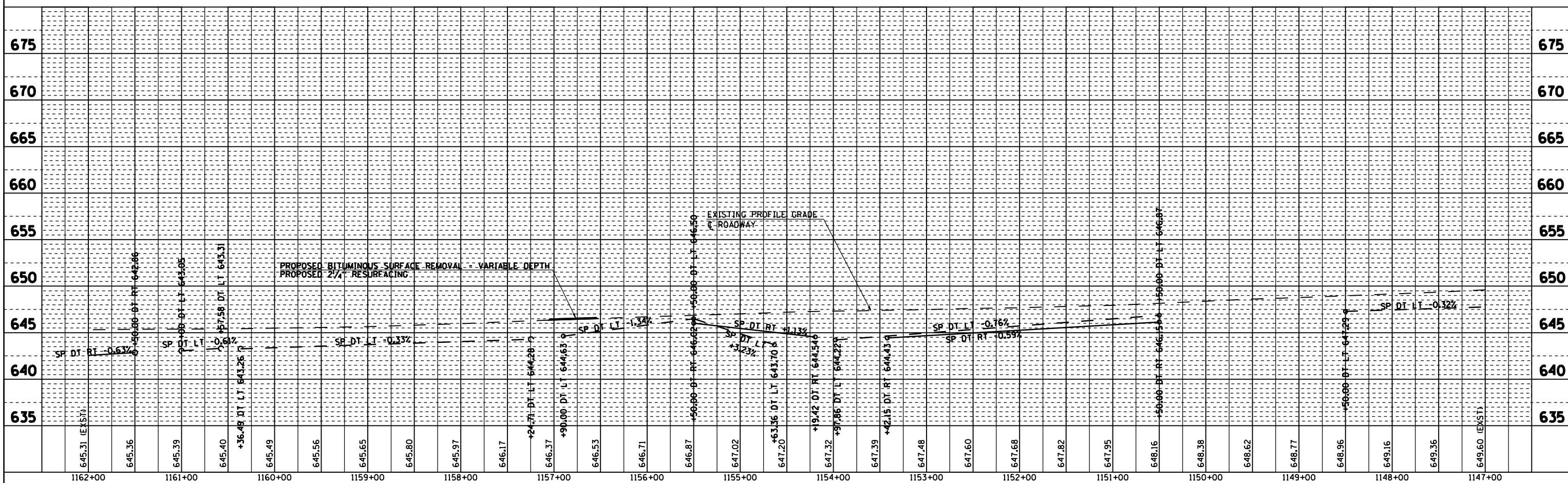
16

PLAN	SURVEYED	BY	DATE
	PLOTTED		
	CHECKED		
	NO. OF WAY CHECKED		
	DATE FILE NAME		



EXIST. CURVE 246
 PI STA. = 1148+84.06
 $\Delta = 3^\circ 11' 01''$ (RT)
 $D = 0^\circ 19' 06''$
 $R = 17,992.82'$
 $T = 500.00'$
 $L = 999.74'$
 $E = 6.95'$
 CORRECTED $e =$ NORMAL CROWN
 P.C. STA. = 1143+84.06
 P.T. STA. = 1153+83.80

PROFILE	SURVEYED	BY	DATE
	PLOTTED		
	CHECKED		
	NO. OF WAY CHECKED		
	DATE FILE NAME		



DGN-SPEC
 DATE-TIME
 *REF01