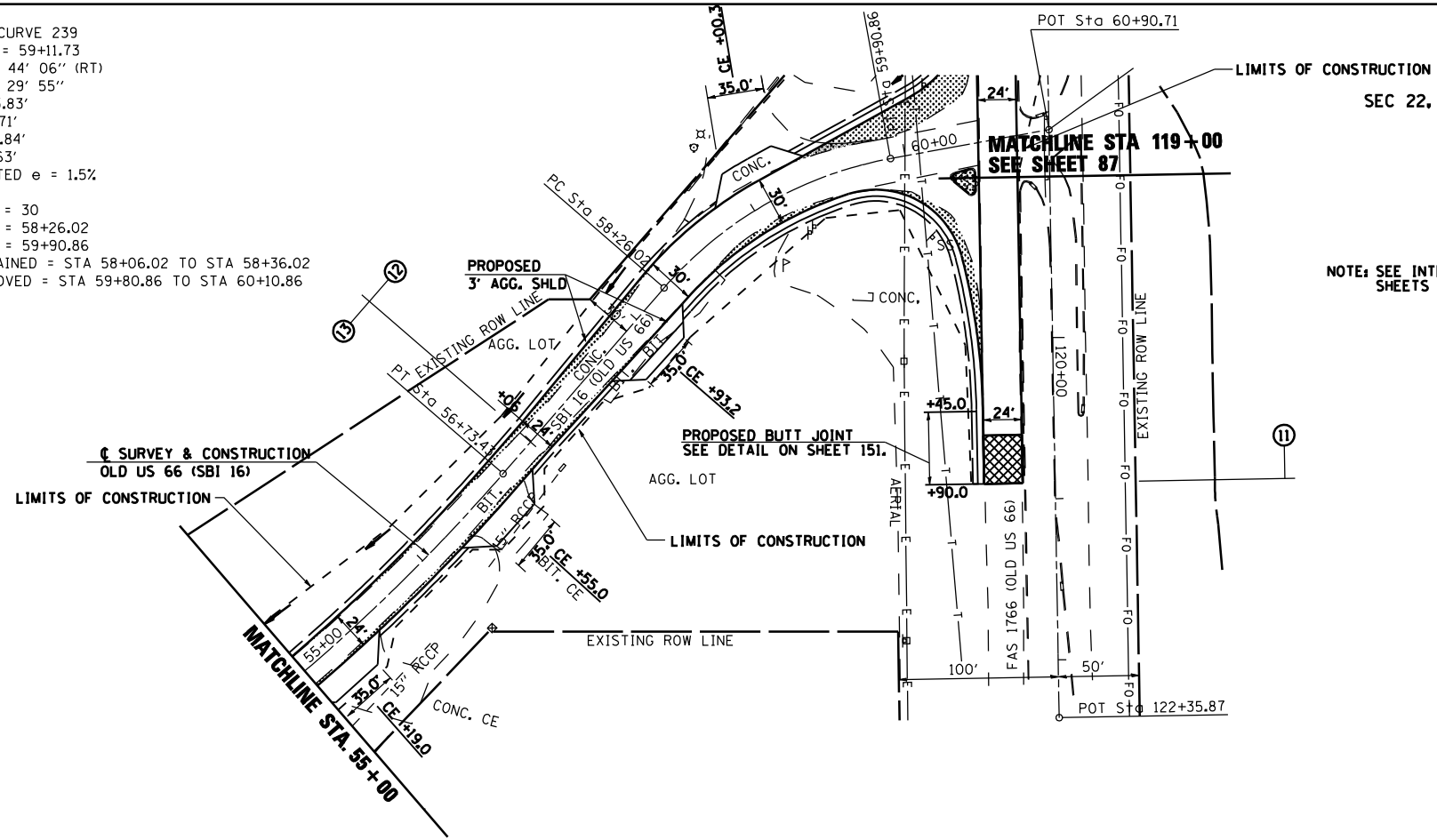


S.B.I. RTE.	SECTION	COUNTY	TOTAL SHEETS	SHEET NO.
16	RS, R	*	302	93
STA. 55+00		TO STA. 60+90.71		
FED. ROAD DIST. NO.	ILLINOIS	FED. AID PROJECT		
* MACOUPIN & MONTGOMERY COUNTIES				
<b>CONTRACT NO. 72526</b>				

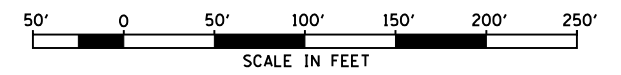
EXIST. CURVE 240  
 PI STA = 55+01.33  
 $\Delta = 16^\circ 50' 08''$  (LT)  
 $D = 4^\circ 51' 21''$   
 $R = 1,179.92'$   
 $T = 174.61'$   
 $L = 346.70'$   
 $E = 12.85'$   
 CORRECTED  $e = 7.0\%$   
 $TR = 33 : 0$   
 $SE RUN = 155 : 184$   
 $PC STA = 53+26.72$   
 $PT STA = 56+73.43$   
 $SE ATTAINED = STA 51+89.72$  TO  $STA 53+77.72$   
 $SE REMOVED = STA 56+22.02$  TO  $STA 58+06.02$

EXIST. CURVE 239  
 PI STA = 59+11.73  
 $\Delta = 38^\circ 44' 06''$  (RT)  
 $D = 23^\circ 29' 55''$   
 $R = 243.83'$   
 $T = 85.71'$   
 $L = 164.84'$   
 $E = 14.63'$   
 CORRECTED  $e = 1.5\%$   
 $TR = 0$   
 $SE RUN = 30$   
 $PC STA = 58+26.02$   
 $PT STA = 59+90.86$   
 $SE ATTAINED = STA 58+06.02$  TO  $STA 58+36.02$   
 $SE REMOVED = STA 59+80.86$  TO  $STA 60+10.86$



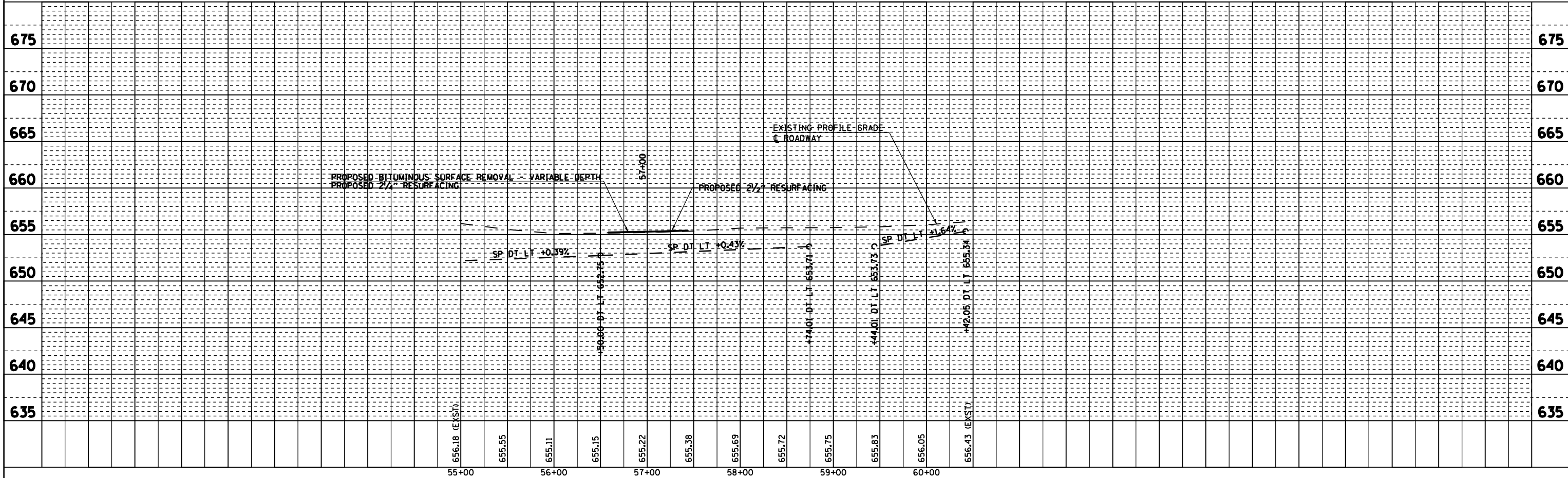
NOTE: SEE INTERSECTION DETAILS ON SHEETS 99-100.

SEC 22, T 7 N, R 6 W, 3RD PM



PLAN	DATE
SURVEYED	
PLOTTED	
CHECKED	
BY	
NO.	

PROFILE	DATE
SURVEYED	
PLOTTED	
CHECKED	
BY	
NO.	



\*DGN-SPEC\*  
 \*DATE-TIME\*  
 \*REF01