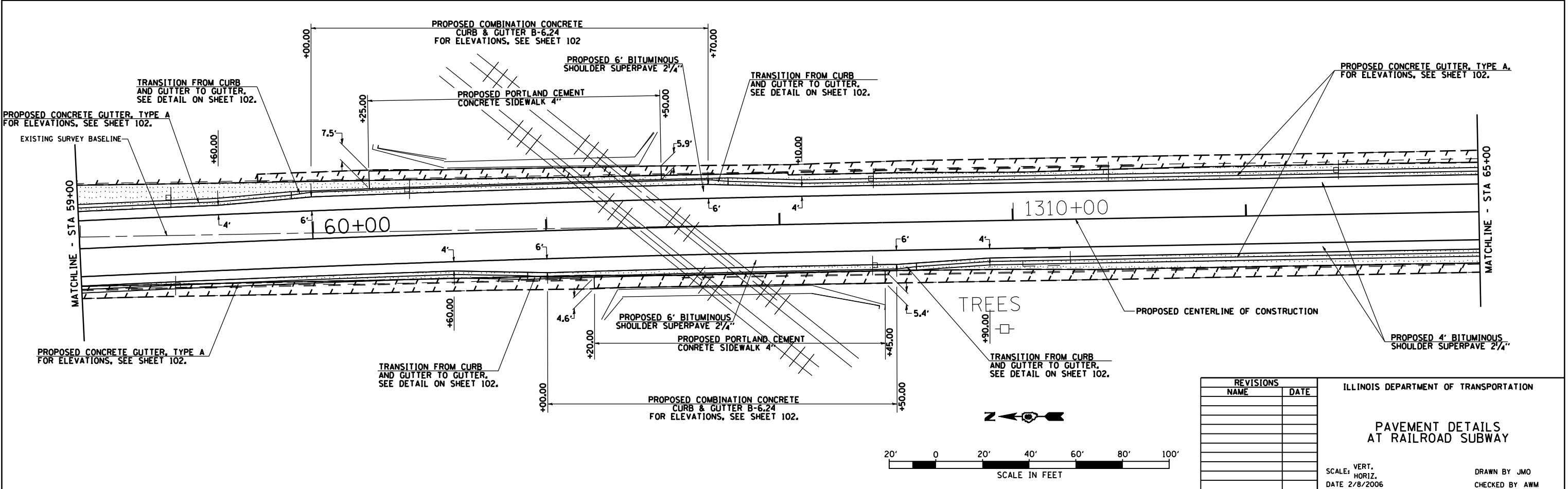
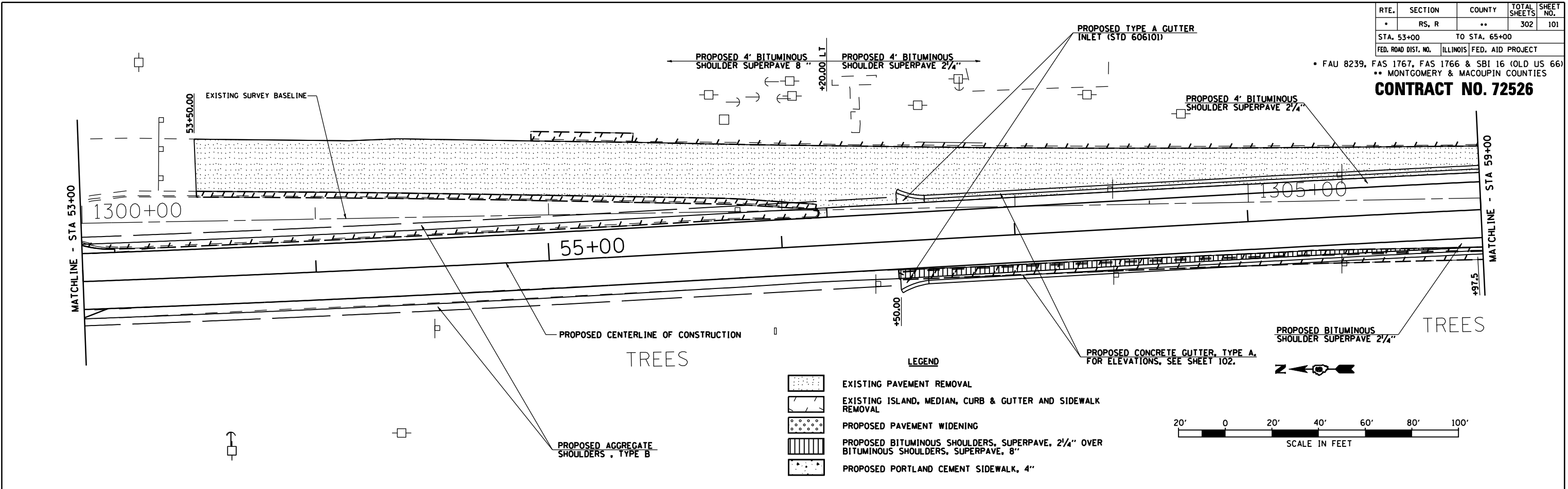


RTE.	SECTION	COUNTY	TOTAL SHEETS	SHEET NO.
*	RS, R	**	302	101
STA. 53+00		TO STA. 65+00		
FED. ROAD DIST. NO.		ILLINOIS FED. AID PROJECT		
* FAU 8239, FAS 1767, FAS 1766 & SBI 16 (OLD US 66)				
** MONTGOMERY & MACOUPIN COUNTIES				
CONTRACT NO. 72526				



REVISIONS	
NAME	DATE

ILLINOIS DEPARTMENT OF TRANSPORTATION

PAVEMENT DETAILS AT RAILROAD SUBWAY

SCALE: VERT. HORIZ. DATE 2/8/2006

DRAWN BY JMO
CHECKED BY AWM