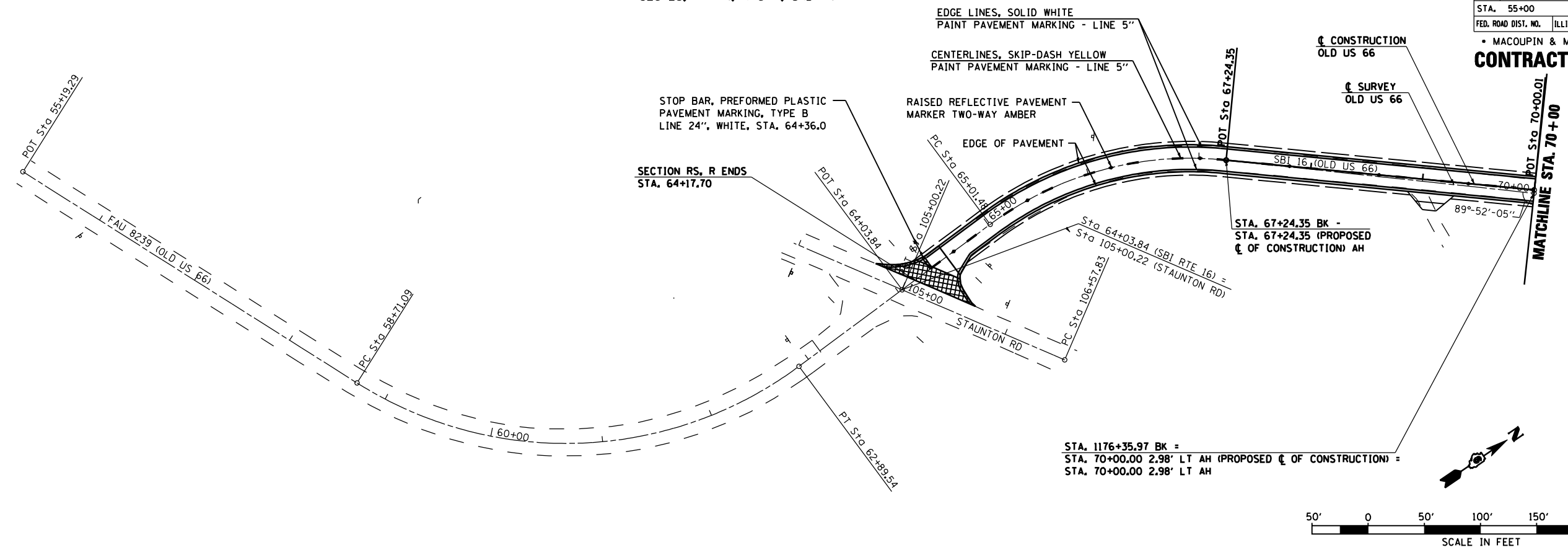


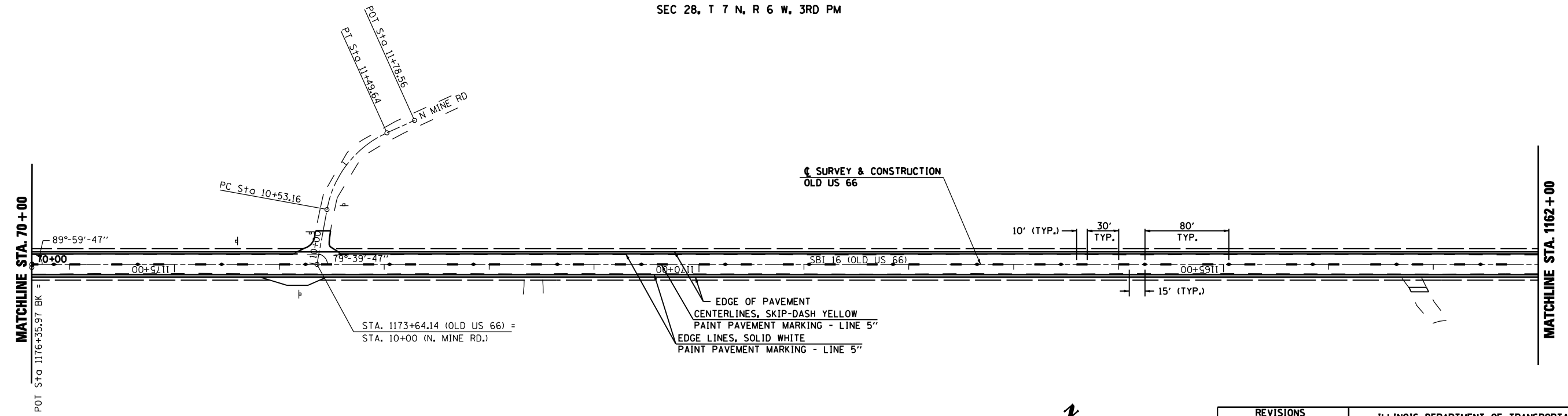
SEC 28, T 7 N, R 6 W, 3RD PM

S.B.I. RTE.	SECTION	COUNTY	TOTAL SHEETS	SHEET NO.
16	RS,R	*	302	113
STA. 55+00		TO STA. 1162+00		
FED. ROAD DIST. NO.		ILLINOIS FED. AID PROJECT		
* MACOUPIN & MONTGOMERY COUNTIES				

CONTRACT NO. 72526



SEC 28, T 7 N, R 6 W, 3RD PM



REVISIONS	
NAME	DATE

ILLINOIS DEPARTMENT OF TRANSPORTATION
PROPOSED PAVEMENT MARKING PLAN
 SCALE: 1"=50'
 DATE: 2/8/2006
 DRAWN BY: SGL
 CHECKED BY: JH