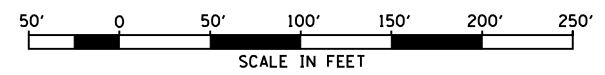
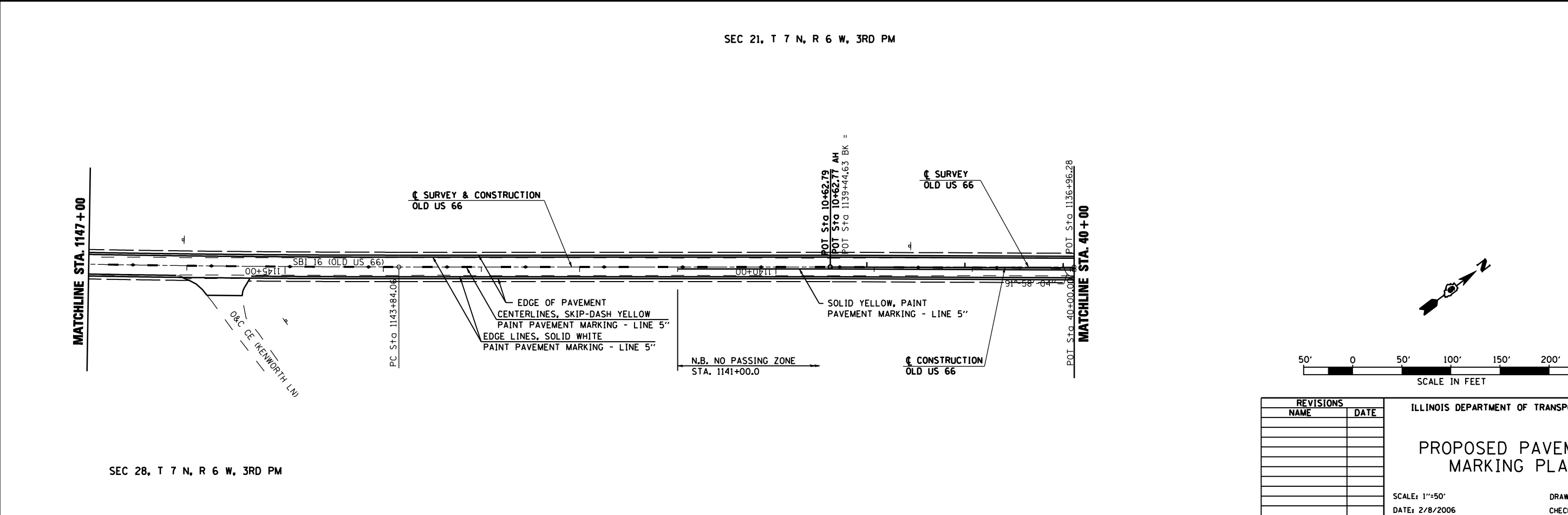
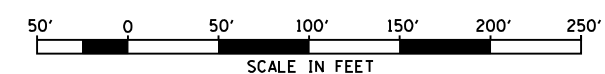
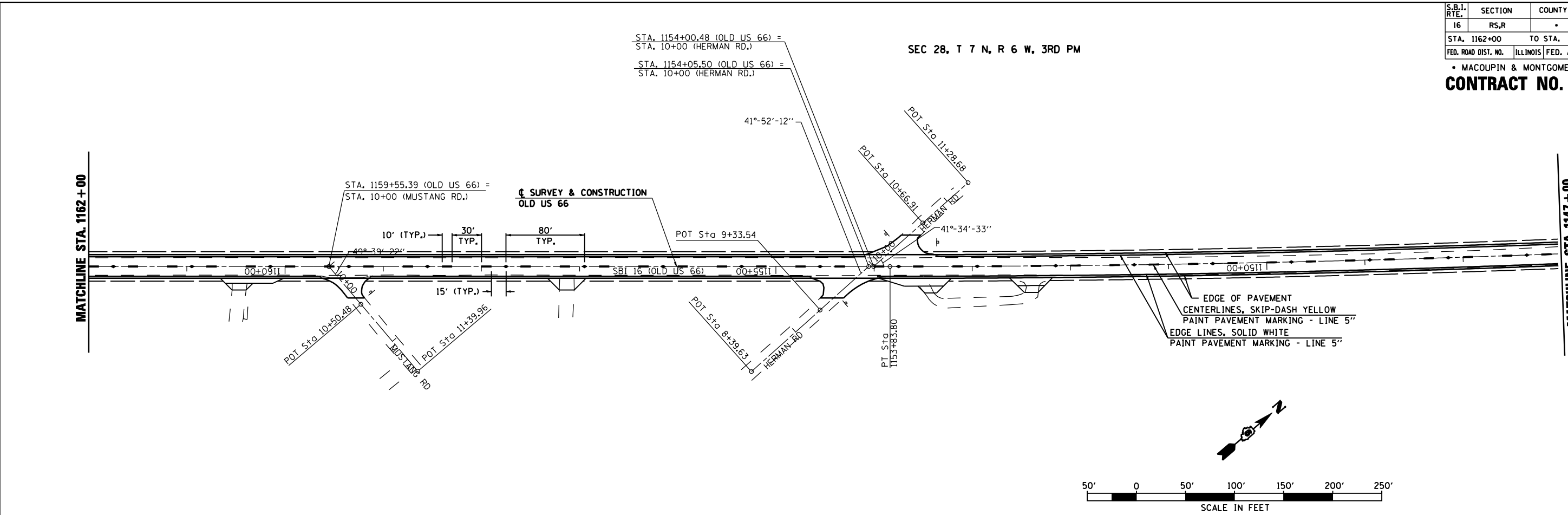


S.B.I. RTE.	SECTION	COUNTY	TOTAL SHEETS	SHEET NO.
16	RS,R	*	302	114
STA. 1162+00		TO STA. 40+00		
FED. ROAD DIST. NO.	ILLINOIS	FED. AID PROJECT		
* MACOUPIN & MONTGOMERY COUNTIES				
CONTRACT NO. 72526				



REVISIONS	
NAME	DATE

ILLINOIS DEPARTMENT OF TRANSPORTATION

PROPOSED PAVEMENT MARKING PLAN

SCALE: 1"=50'
DATE: 2/8/2006

DRAWN BY: SGL
CHECKED BY: JH

SEC 28, T 7 N, R 6 W, 3RD PM

OLD ROUTE 66 STA. 1162+00 TO STA. 40+00