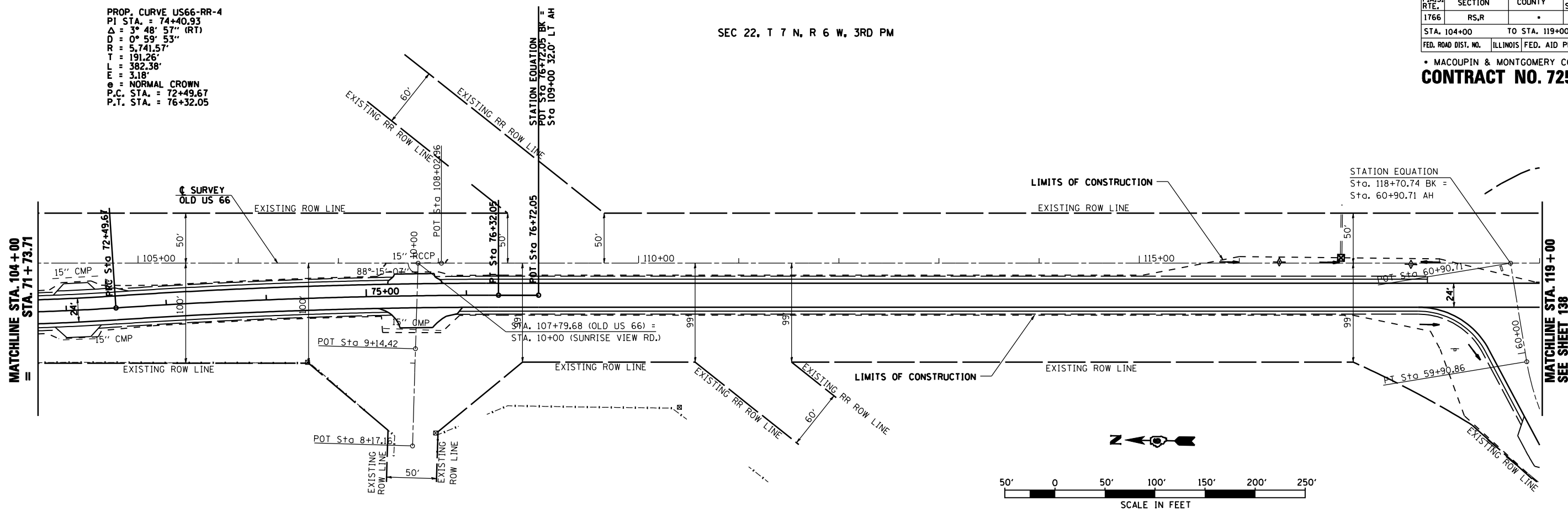


PROP. CURVE US66-RR-4
 P.I. STA. = 74+40.93
 Δ = 3° 48' 57" (RT)
 D = 0° 59' 53"
 R = 5,741.57'
 T = 191.26'
 L = 302.38'
 e = 3.18'
 g = NORMAL CROWN
 P.C. STA. = 72+49.67
 P.T. STA. = 76+32.05

SEC 22, T 7 N, R 6 W, 3RD PM

F.A.S. RTE.	SECTION	COUNTY	TOTAL SHEETS	SHEET NO.
1766	RS,R	.	302	135
STA. 104+00		TO STA. 119+00		
FED. ROAD DIST. NO.	ILLINOIS	FED. AID PROJECT		
• MACOUPIN & MONTGOMERY COUNTIES				
CONTRACT NO. 72526				



REVISIONS	
NAME	DATE

ILLINOIS DEPARTMENT OF TRANSPORTATION
STORMWATER POLLUTION PREVENTION PLAN
 SCALE: VERT. _____
 HORIZ. _____
 DATE 2/8/2006
 DRAWN BY TJD
 CHECKED BY AWM