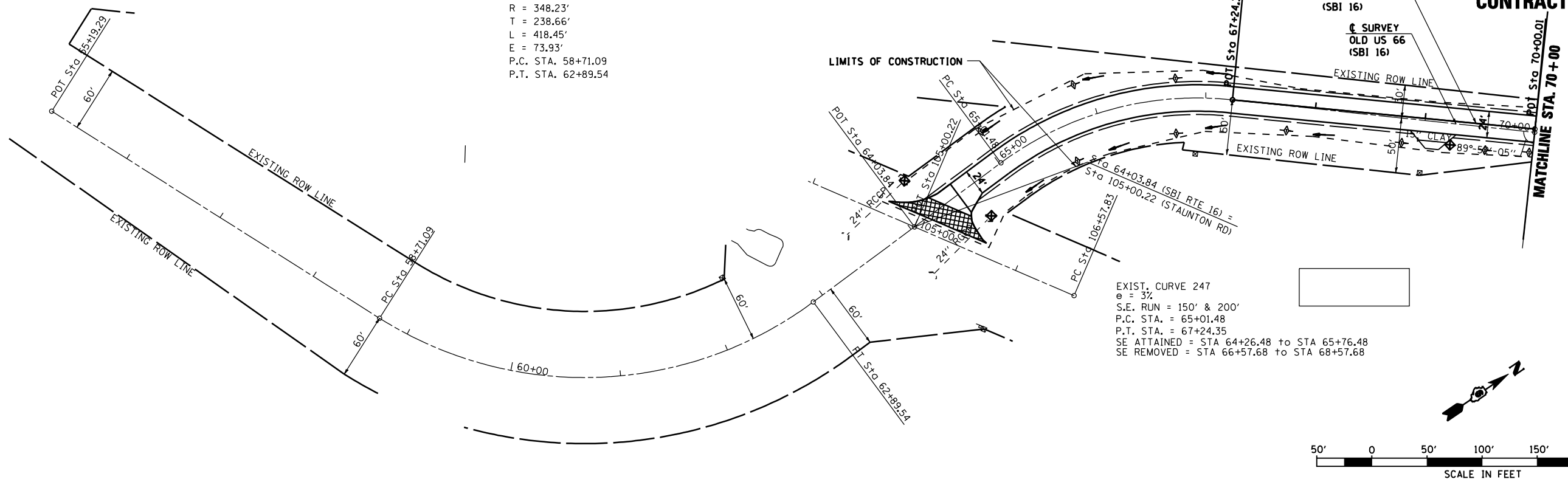


S.B.I. RTE.	SECTION	COUNTY	TOTAL SHEETS	SHEET NO.
16	RS,R	*	302	136
STA. 55+00		TO STA. 1162+00		
FED. ROAD DIST. NO.		ILLINOIS FED. AID PROJECT		

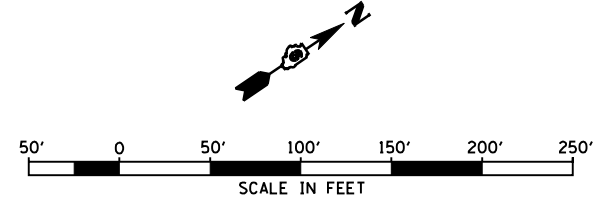
MACOUPIN & MONTGOMERY COUNTIES  
**CONTRACT NO. 72526**

SEC 28, T 7 N, R 6 W, 3RD PM

EXIST. CURVE 248  
 P.I. STA. 61+09.75  
 $\Delta = 68^{\circ}50'56''$  (LT)  
 $D = 16^{\circ}27'12''$   
 $R = 348.23'$   
 $T = 238.66'$   
 $L = 418.45'$   
 $E = 73.93'$   
 P.C. STA. 58+71.09  
 P.T. STA. 62+89.54

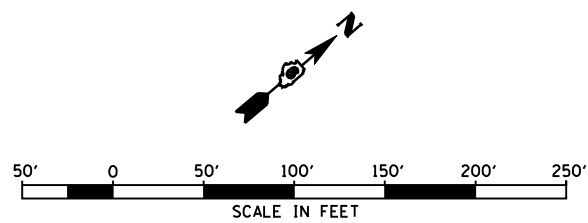
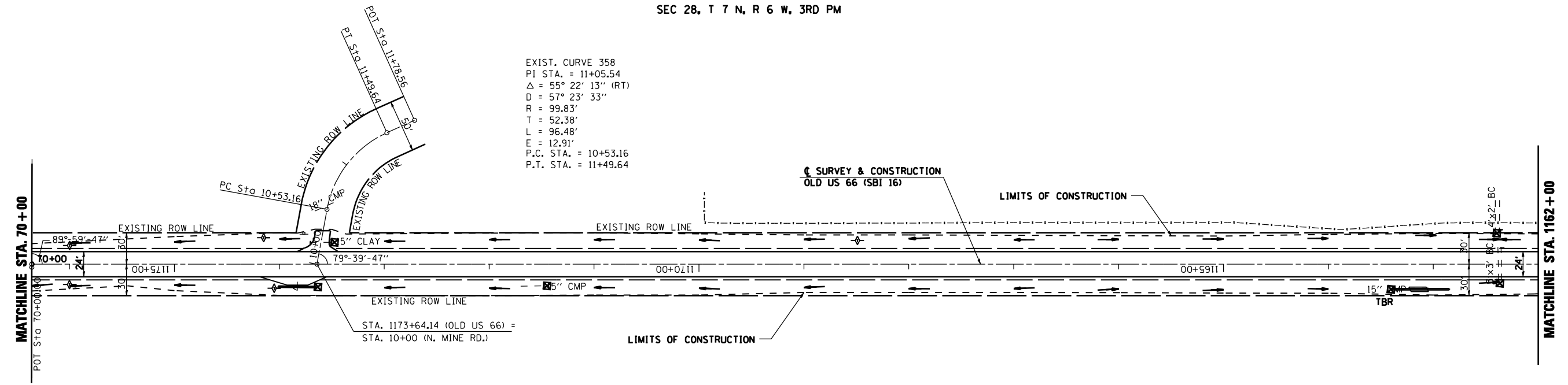


EXIST. CURVE 247  
 $\theta = 37^{\circ}$   
 S.E. RUN = 150' & 200'  
 P.C. STA. = 65+01.48  
 P.T. STA. = 67+24.35  
 SE ATTAINED = STA 64+26.48 to STA 65+76.48  
 SE REMOVED = STA 66+57.68 to STA 68+57.68



SEC 28, T 7 N, R 6 W, 3RD PM

EXIST. CURVE 358  
 PI STA. = 11+05.54  
 $\Delta = 55^{\circ}22'13''$  (RT)  
 $D = 57^{\circ}23'33''$   
 $R = 99.83'$   
 $T = 52.38'$   
 $L = 96.48'$   
 $E = 12.91'$   
 P.C. STA. = 10+53.16  
 P.T. STA. = 11+49.64



REVISIONS	
NAME	DATE

ILLINOIS DEPARTMENT OF TRANSPORTATION  
**STORMWATER POLLUTION PREVENTION PLAN**  
 SCALE: VERT. \_\_\_\_\_  
 HORIZ. \_\_\_\_\_  
 DATE 2/8/2006  
 DRAWN BY TJD  
 CHECKED BY AWM