

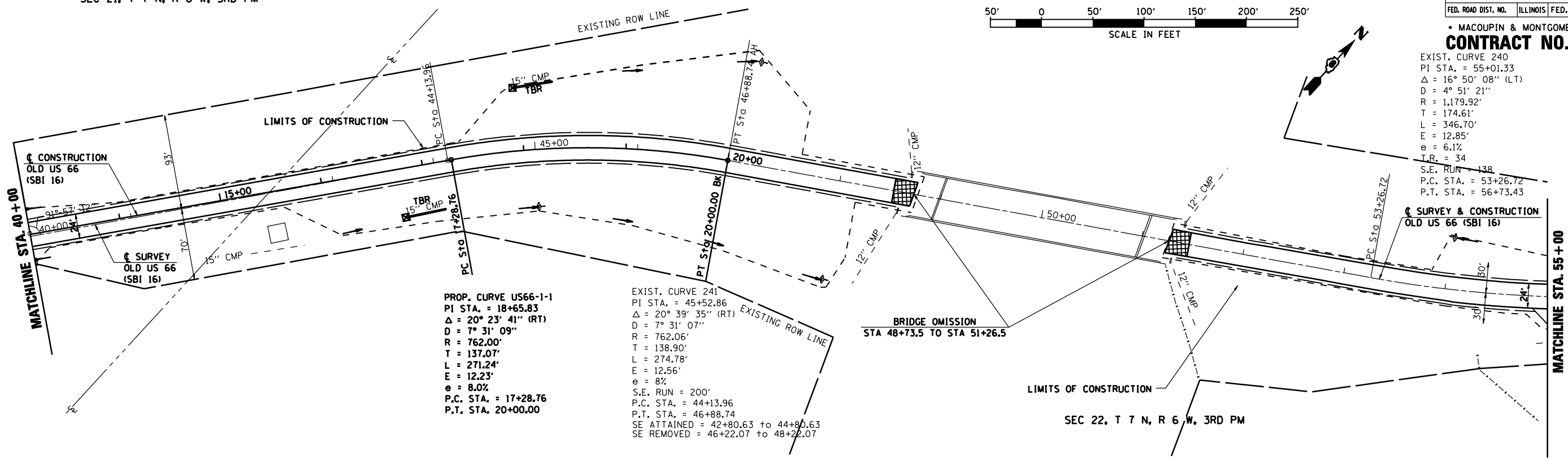
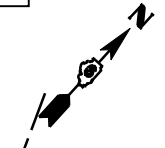
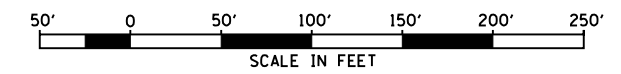
SEC 21, T 7 N, R 6 W, 3RD PM

S.B.I. RTE.	SECTION	COUNTY	TOTAL SHEETS	SHEET NO.
16	RS,R	.	302	138

STA. 40+00 TO STA. 60+90.71
 FED. ROAD DIST. NO. ILLINOIS FED. AID PROJECT

MACOUPIN & MONTGOMERY COUNTIES
CONTRACT NO. 72526

EXIST. CURVE 240
 PI STA. = 55+01.33
 $\Delta = 16^\circ 50' 08''$ (LT)
 D = 4° 51' 21"
 R = 1,179.92'
 T = 174.61'
 L = 346.70'
 E = 12.85'
 e = 6.1%
 T.R. = 34
 S.E. RUN = 138
 P.C. STA. = 53+26.72
 P.T. STA. = 56+73.43



PROP. CURVE US66-1-1
 PI STA. = 18+65.83
 $\Delta = 20^\circ 23' 41''$ (RT)
 D = 7° 31' 09"
 R = 762.00'
 T = 137.07'
 L = 271.24'
 E = 12.23'
 e = 8.0%
 P.C. STA. = 17+28.76
 P.T. STA. 20+00.00

EXIST. CURVE 241
 PI STA. = 45+52.86
 $\Delta = 20^\circ 39' 35''$ (RT)
 D = 7° 31' 07"
 R = 762.06'
 T = 138.90'
 L = 274.78'
 E = 12.56'
 e = 8%
 S.E. RUN = 200'
 P.C. STA. = 44+13.96
 P.T. STA. = 46+88.74
 SE ATTAINED = 42+80.63 to 44+80.63
 SE REMOVED = 46+22.07 to 48+22.07

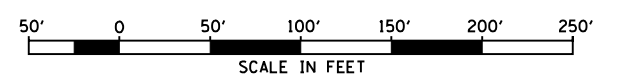
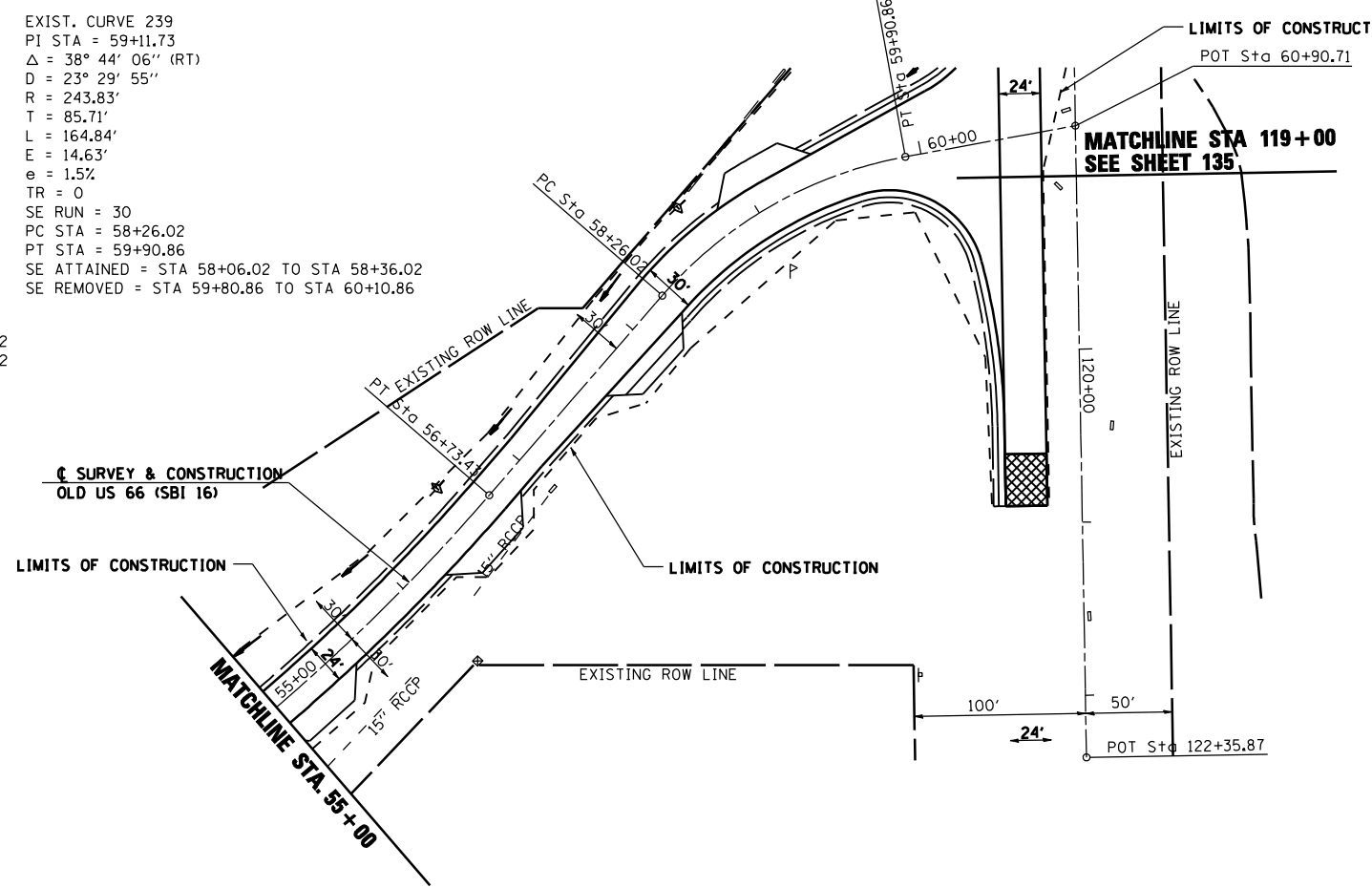
BRIDGE OMISSION
 STA 48+73.5 TO STA 51+26.5

SEC 22, T 7 N, R 6 W, 3RD PM

EXIST. CURVE 240
 PI STA = 55+01.33
 $\Delta = 16^\circ 50' 08''$ (LT)
 D = 4° 51' 21"
 R = 1,179.92'
 T = 174.61'
 L = 346.70'
 E = 12.85'
 e = 7.0%
 TR = 33 ; 0
 SE RUN = 155 ; 184
 PC STA = 53+26.72
 PT STA = 56+73.43
 SE ATTAINED = STA 51+89.72 TO STA 53+77.72
 SE REMOVED = STA 56+22.02 TO STA 58+06.02

EXIST. CURVE 239
 PI STA = 59+11.73
 $\Delta = 38^\circ 44' 06''$ (RT)
 D = 23° 29' 55"
 R = 243.83'
 T = 85.71'
 L = 164.84'
 E = 14.63'
 e = 1.5%
 TR = 0
 SE RUN = 30
 PC STA = 58+26.02
 PT STA = 59+90.86
 SE ATTAINED = STA 58+06.02 TO STA 58+36.02
 SE REMOVED = STA 59+80.86 TO STA 60+10.86

SEC 22, T 7 N, R 6 W, 3RD PM



REVISIONS	
NAME	DATE

ILLINOIS DEPARTMENT OF TRANSPORTATION
STORMWATER POLLUTION PREVENTION PLAN
 SCALE: VERT. HORIZ.
 DATE 2/8/2006
 DRAWN BY TJD
 CHECKED BY AWM