

ROUTE NO.	SECTION	COUNTY	TOTAL SHEETS	SHEET NO.
F.A.S. 1766	RS,R	MACOUPIN	302	165
FED. ROAD DIST. NO. 7	ILLINOIS	FED. AID PROJECT		

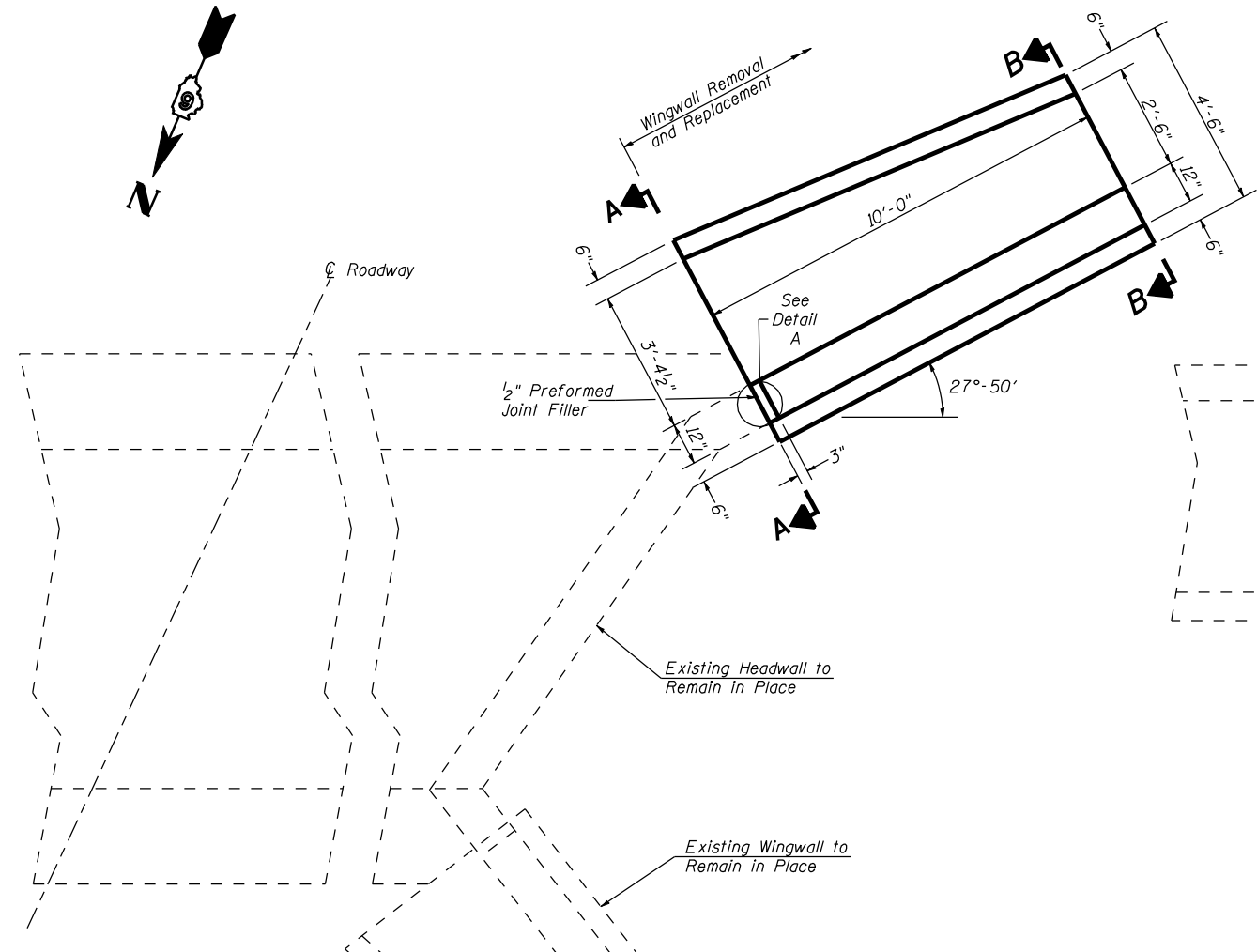
SHEET NO. 1  
1 SHEETS

**CONTRACT NO. 72526**

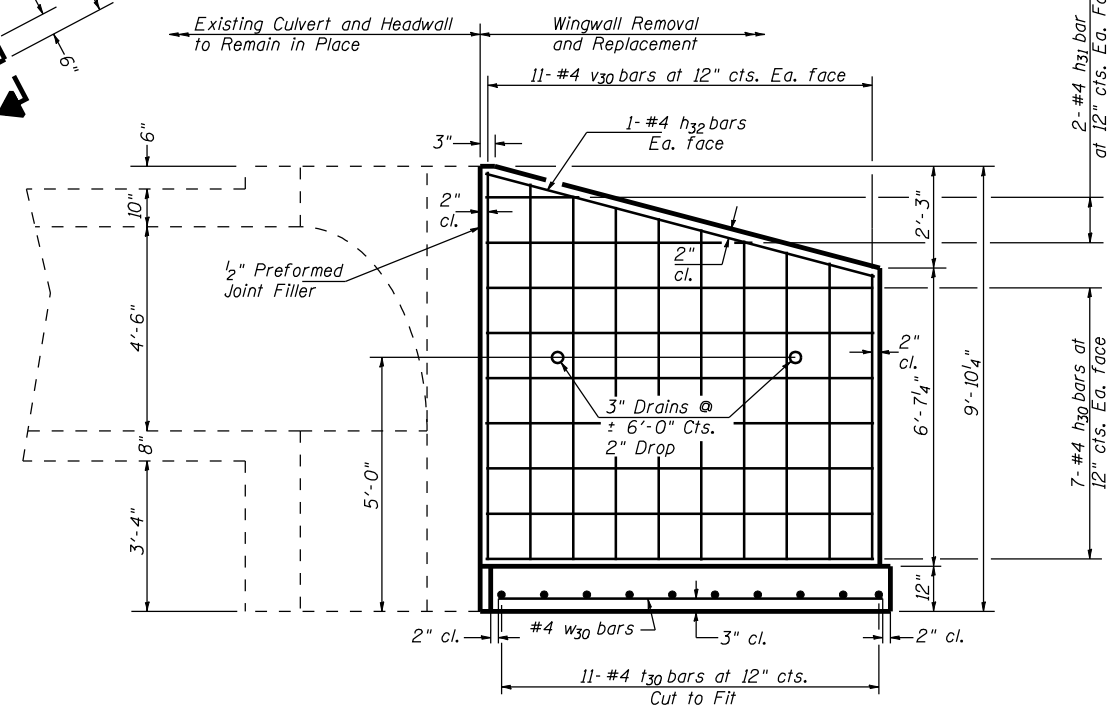
**TOTAL BILL OF MATERIAL**

Bar	No.	Size	Length	Shape
h30	14	#4	9'-8"	—
h31	2	#4	10'-0"	—
h32	2	#4	9'-11"	—
t30	11	#4	5'-0"	—
v30	11	#4	16'-1"	—
w30	6	#4	9'-8"	—
ITEM		UNIT	TOTAL	
Wingwall Removal *		EACH	1	
Concrete Box Culverts		CU YD	9.0	
Reinforcement Bars		POUND	310	

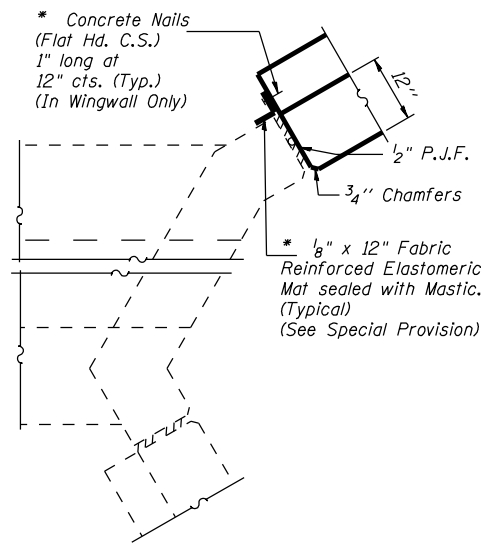
\* Approximately 9.0 Cu Yd of concrete to be removed



**PLAN VIEW**

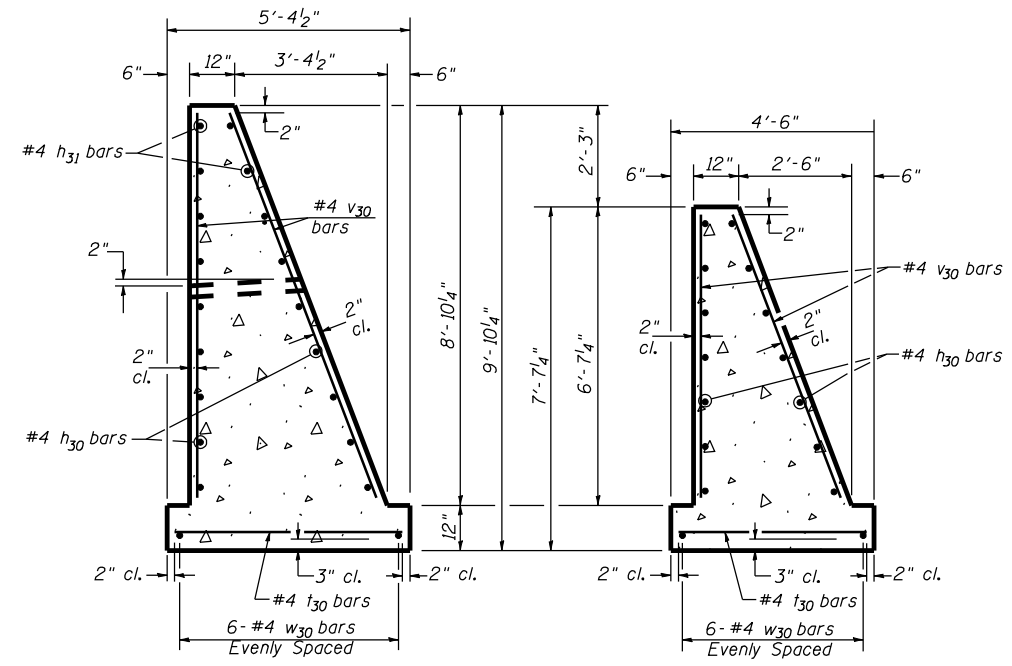


**ELEVATION VIEW**



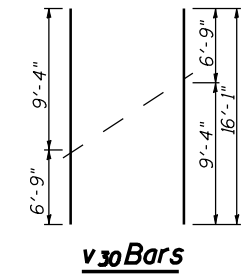
**DETAIL A**

\* Cost included with Concrete Box Culverts.

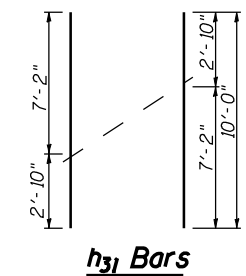


**SECTION A-A**

**SECTION B-B**



**v30 Bars**



**h31 Bars**

**GENERAL NOTES**

Reinforcement Bars shall conform to the requirements of AASHTO M31 or M322, Grade 60.  
Exposed edges shall have a 3/4" chamfer unless otherwise noted.  
For backfilling and embankment see Standard Specifications.  
Plan dimensions and details relative to existing structure have been taken from existing plans and are subject to nominal construction variations. It shall be the Contractor's responsibility to verify such dimensions and details in the field and make necessary approved adjustments prior to construction or ordering of materials. Such variations shall not be cause for additional compensation for a change in the scope of the work, however, the Contractor will be paid for the quantity actually furnished at the unit price bid for the work.

**CULVERT DETAILS**  
**F.A.S. ROUTE 1766**  
**(OLD U.S. ROUTE 66)**  
**SECTION RS,R**  
**MACOUPIN COUNTY**  
**STATION 53+64.00 RT**

**HUTCHISON ENGINEERING, INC.**  
**JACKSONVILLE, ILLINOIS**

DESIGNED	BAN
CHECKED	JOH
DRAWN	TC
CHECKED	JOH