

F.A.S. RTE.	SECTION	COUNTY	TOTAL SHEETS	SHEET NO.
1766	RS, R	•	302	230
STA. 1042+00		TO STA. 1046+50		
FED. ROAD DIST. NO.		ILLINOIS FED. AID PROJECT		
MACOUPIN & MONTGOMERY COUNTIES				
<b>CONTRACT NO. 72526</b>				

BY	DATE

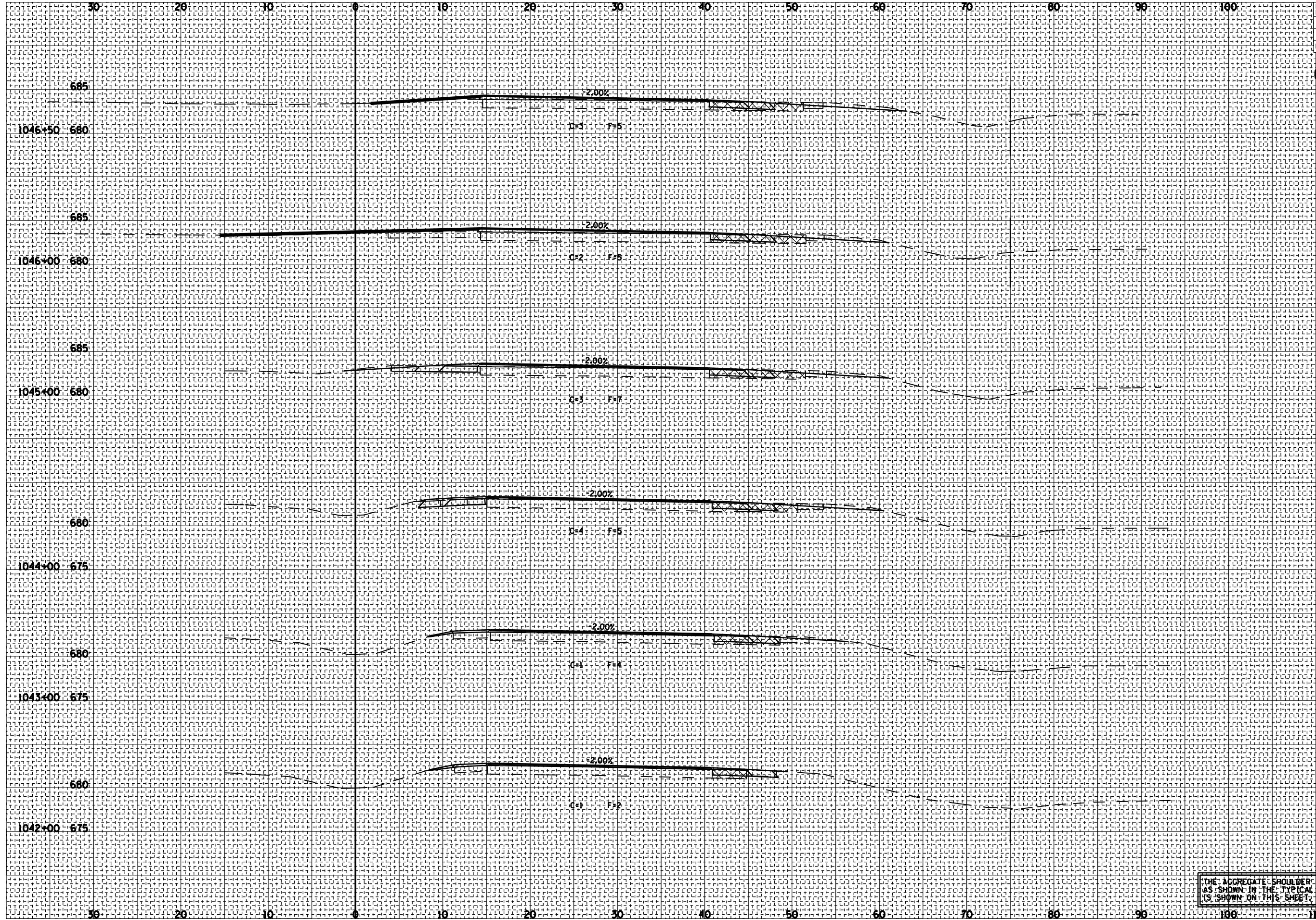
  

NO.	AREAS CHECKED

BY	DATE

NO.	AREAS CHECKED



THE AGGREGATE SHOULDER ON THE LEFT SIDE SHALL BE 2' WIDE AS SHOWN IN THE TYPICAL SECTIONS RATHER THAN 3' WIDE AS IT IS SHOWN ON THIS SHEET.