

| F.A.S. RTE. | SECTION | COUNTY | TOTAL SHEETS | SHEET NO. |
|-------------|---------|--------|--------------|-----------|
| 1766 | RS, R | • | 302 | 257 |

STA. 1202+00 TO STA. 1206+00

FED. ROAD DIST. NO. ILLINOIS FED. AID PROJECT

MACOUPIN & MONTGOMERY COUNTIES

CONTRACT NO. 72526

| BY | DATE |
|----|------|
| | |

NO.

AREAS CHECKED

AREAS

PLOTTED

SURVEYED

FINAL SURVEY

NO.

AREAS CHECKED

AREAS

PLOTTED

SURVEYED

FINAL SURVEY

NO.

AREAS CHECKED

AREAS

PLOTTED

SURVEYED

FINAL SURVEY

NO.

AREAS CHECKED

AREAS

PLOTTED

SURVEYED

FINAL SURVEY

NO.

AREAS CHECKED

AREAS

PLOTTED

SURVEYED

FINAL SURVEY

NO.

AREAS CHECKED

AREAS

PLOTTED

SURVEYED

FINAL SURVEY

NO.

AREAS CHECKED

AREAS

PLOTTED

SURVEYED

FINAL SURVEY

NO.

AREAS CHECKED

AREAS

PLOTTED

SURVEYED

FINAL SURVEY

NO.

AREAS CHECKED

AREAS

PLOTTED

SURVEYED

FINAL SURVEY

NO.

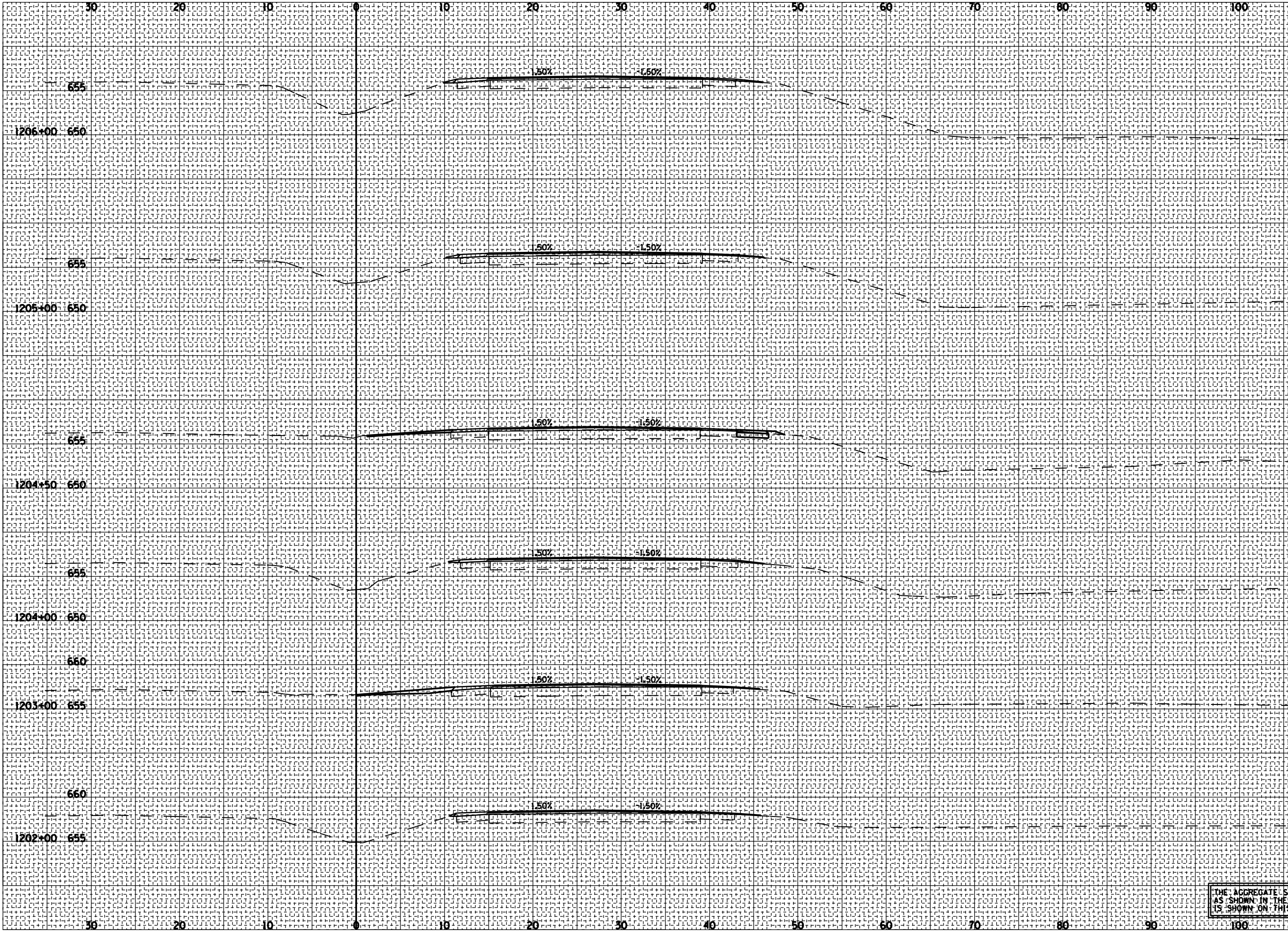
AREAS CHECKED

AREAS

PLOTTED

SURVEYED

FINAL SURVEY



THE AGGREGATE SHOULDER ON THE LEFT SIDE SHALL BE 2' WIDE AS SHOWN IN THE TYPICAL SECTIONS RATHER THAN 3' WIDE AS IT IS SHOWN ON THIS SHEET.