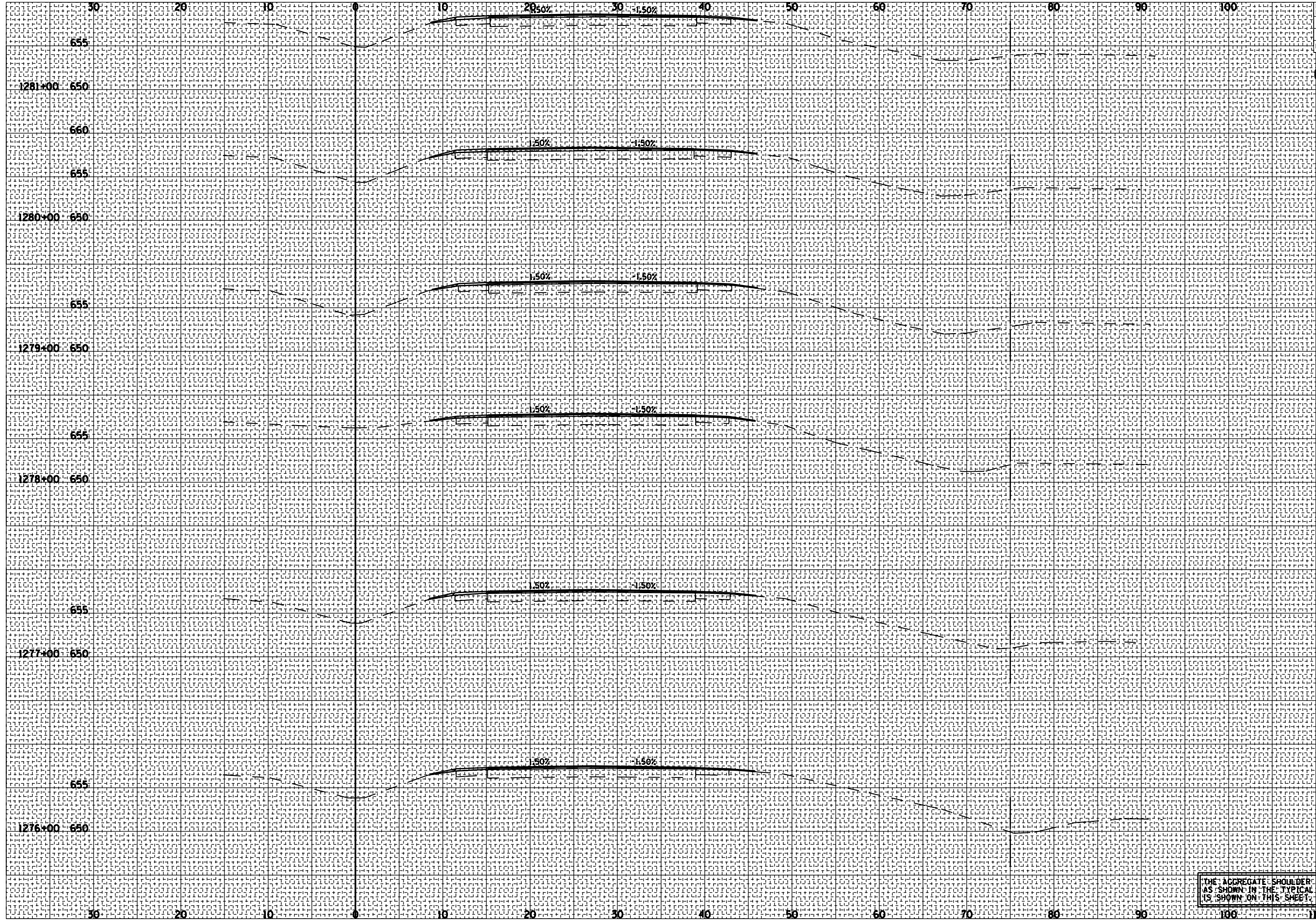


F.A.S. RTE.	SECTION	COUNTY	TOTAL SHEETS	SHEET NO.
1766	RS, R		302	271
STA. 1276+00		TO STA. 1281+00		
FED. ROAD DIST. NO.		ILLINOIS FED. AID PROJECT		
MACOUPIN & MONTGOMERY COUNTIES				
<b>CONTRACT NO. 72526</b>				
650		1281+00		

BY	DATE

BY	DATE



THE AGGREGATE SHOULDER ON THE LEFT SIDE SHALL BE 2' WIDE AS SHOWN IN THE TYPICAL SECTIONS RATHER THAN 3' WIDE AS IT IS SHOWN ON THIS SHEET.