

F.A.P. RTE.	SECTION	COUNTY	TOTAL SHEETS	SHEET NO.
315	34-4	HANCOCK	452	44
STA. 930+00		TO STA. 961+00		
FED. ROAD DIST. NO.		ILLINOIS FED. AID PROJECT		

CONTRACT NO. 72680

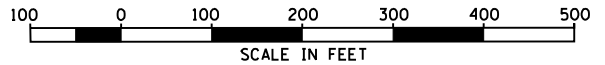
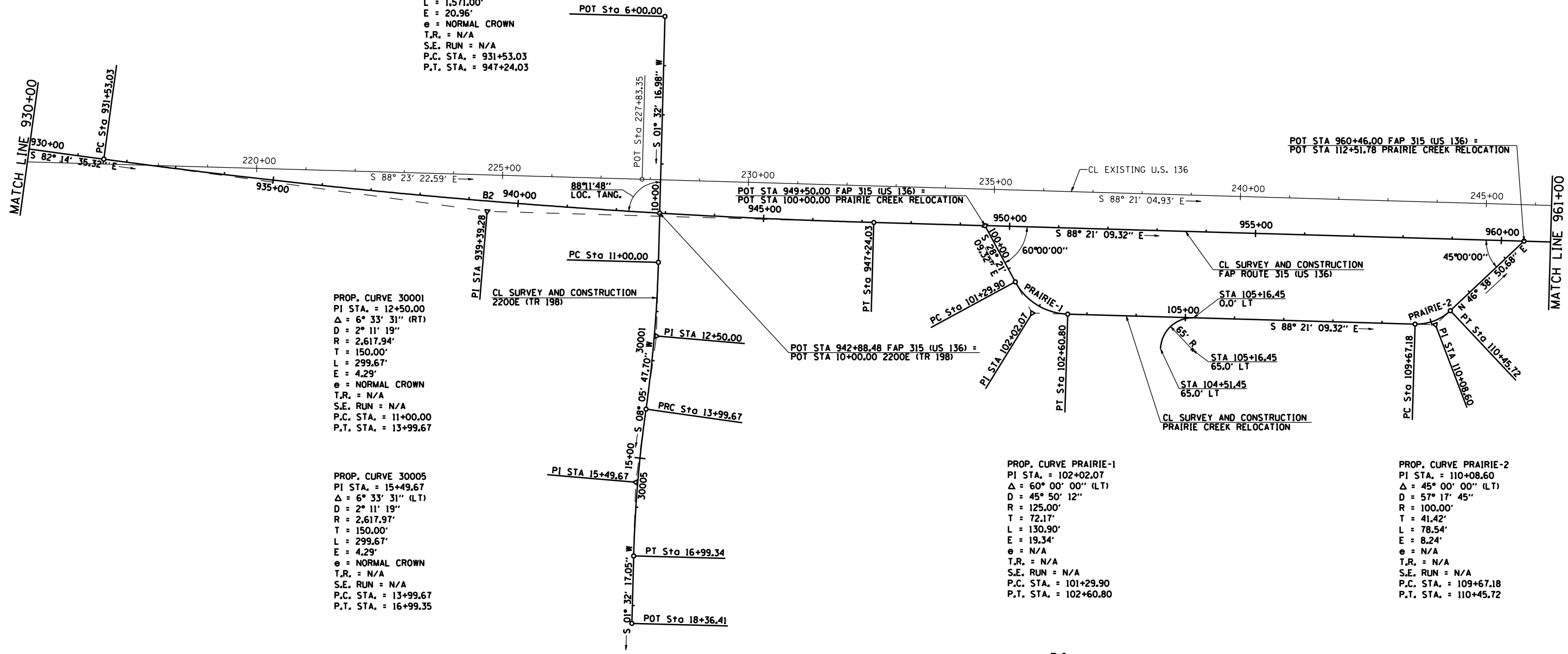
PROP. CURVE B2
 PI STA. = 939+39.28
 $\Delta = 6^\circ 06' 34''$ (LT)
 $D = 0^\circ 23' 20''$
 $R = 14,733.20'$
 $T = 786.25'$
 $L = 1,571.00'$
 $E = 20.96'$
 $e = \text{NORMAL CROWN}$
 $T.R. = \text{N/A}$
 $S.E. \text{ RUN} = \text{N/A}$
 $P.C. \text{ STA.} = 931+53.03$
 $P.T. \text{ STA.} = 947+24.03$

PROP. CURVE 30001
 PI STA. = 12+50.00
 $\Delta = 6^\circ 33' 31''$ (RT)
 $D = 2^\circ 11' 19''$
 $R = 2,617.94'$
 $T = 150.00'$
 $L = 299.67'$
 $E = 4.29'$
 $e = \text{NORMAL CROWN}$
 $T.R. = \text{N/A}$
 $S.E. \text{ RUN} = \text{N/A}$
 $P.C. \text{ STA.} = 11+00.00$
 $P.T. \text{ STA.} = 13+99.67$

PROP. CURVE 30005
 PI STA. = 15+49.67
 $\Delta = 6^\circ 33' 31''$ (LT)
 $D = 2^\circ 11' 19''$
 $R = 2,617.97'$
 $T = 150.00'$
 $L = 299.67'$
 $E = 4.29'$
 $e = \text{NORMAL CROWN}$
 $T.R. = \text{N/A}$
 $S.E. \text{ RUN} = \text{N/A}$
 $P.C. \text{ STA.} = 13+99.67$
 $P.T. \text{ STA.} = 16+99.35$

PROP. CURVE PRAIRIE-1
 PI STA. = 102+02.07
 $\Delta = 60^\circ 00' 00''$ (LT)
 $D = 45^\circ 50' 12''$
 $R = 125.00'$
 $T = 72.17'$
 $L = 130.90'$
 $E = 19.34'$
 $e = \text{N/A}$
 $T.R. = \text{N/A}$
 $S.E. \text{ RUN} = \text{N/A}$
 $P.C. \text{ STA.} = 101+29.90$
 $P.T. \text{ STA.} = 102+60.80$

PROP. CURVE PRAIRIE-2
 PI STA. = 110+08.60
 $\Delta = 45^\circ 00' 00''$ (LT)
 $D = 57^\circ 17' 45''$
 $R = 100.00'$
 $T = 41.42'$
 $L = 78.54'$
 $E = 8.24'$
 $e = \text{N/A}$
 $T.R. = \text{N/A}$
 $S.E. \text{ RUN} = \text{N/A}$
 $P.C. \text{ STA.} = 109+67.18$
 $P.T. \text{ STA.} = 110+45.72$



REVISIONS	
NAME	DATE

ILLINOIS DEPARTMENT OF TRANSPORTATION
**FAP ROUTE 315
 ALIGNMENT LAYOUT
 STA 930+00 TO STA 961+00**
 SCALE: 1" = 100'-0"
 DATE 1/31/06
 DRAWN BY JCG
 CHECKED BY JRB