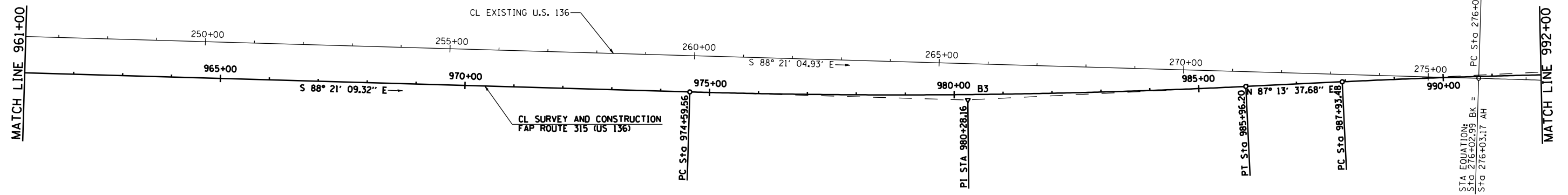


| F.A.P. RTE. | SECTION | COUNTY | TOTAL SHEETS | SHEET NO. |
|---------------------|---------|----------------|------------------|-----------|
| 315 | 34-4 | HANCOCK | 452 | 45 |
| STA. 961+00 | | TO STA. 992+00 | | |
| FED. ROAD DIST. NO. | | ILLINOIS | FED. AID PROJECT | |

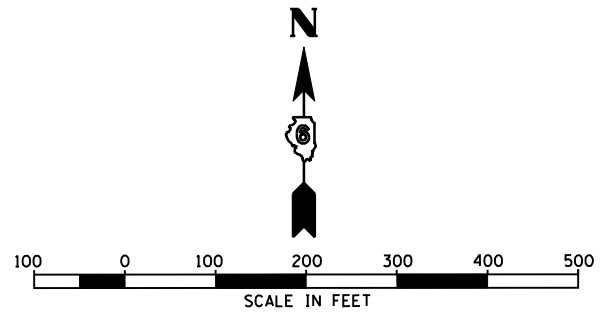
D-96-991-02
CONTRACT NO. 72680

PROP. CURVE B3
 PI STA. = 980+28.16
 Δ = 4° 25' 13" (LT)
 D = 0° 23' 20"
 R = 14,733.20'
 T = 568.60'
 L = 1,136.64'
 E = 10.96'
 e = NORMAL CROWN
 T.R. = N/A
 S.E. RUN = N/A
 P.C. STA. = 974+59.56
 P.T. STA. = 985+96.20



STA EQUATION:
 Sta 276+02.99 BK =
 Sta 276+03.17 AH

EXIST. CURVE EC03
 PI STA. = 281+03.16
 Δ = 0° 56' 16" (RT)
 D = 0° 05' 38"
 R = 61,087.36'
 T = 499.99'
 L = 999.96'
 E = 2.05'
 e = N/A
 T.R. = N/A
 S.E. RUN = N/A
 P.C. STA. = 276+03.17
 P.T. STA. = 286+03.13



| REVISIONS | |
|-----------|------|
| NAME | DATE |
| | |
| | |
| | |
| | |
| | |
| | |
| | |
| | |
| | |
| | |

ILLINOIS DEPARTMENT OF TRANSPORTATION
**FAP ROUTE 315
 ALIGNMENT LAYOUT
 STA 961+00 TO STA 992+00**
 SCALE: 1" = 100'-0"
 DATE 1/31/06
 DRAWN BY JCG
 CHECKED BY JRB